

18

**Ημερήσιο Δελτίο  
Συναλλακτικής Δραστηριότητας**

Daily Official List  
of Trading Activity

Thursday, 19 April, 2018  
Year: 139 Trading Day No: 73



**ATHEX**  
Athens Stock Exchange

**Disclaimer:**

Hellenic Exchanges-Athens Stock Exchange S.A. endeavours to ensure that the data and other material ("Information") presented on the Daily Official List are accurate and complete, but it is not liable for any errors or omissions of data or /and for the accuracy, credibility, updating and completeness of the aforesaid information nor it has any liability arising directly or indirectly from the use of the above Information.

The Company is not liable for the accuracy of the data included in listed companies' announcements. Only the sender of such an announcement is fully and solely liable for any infringement of third party's rights from the content of such announcement. All contents of the Daily Official List are provided only for information purposes and do not constitute investment advice or solicitation to invest in securities or other products listed for trading on the Exchange.

You acknowledge and agree that the Company is the owner of any property rights related to any Information appearing on the Daily Official List including intellectual property rights copyright, trademarks, etc.

The above data are a property of the Hellenic Exchanges-Athens Exchange and are copyright protected. Users are forbidden to reproduce, modify, copy, sale, transmit or redistribute, by all reproduction means and methods, part or the whole of the above data, without reference to their source.

The commercial exploitation of these data is, also, forbidden by third parties. Hellenic Exchanges-Athens Exchange does not carry any responsibility, direct or indirect, derived from usage or accidental alteration of the above data when used by third parties.

---

**Hellenic Exchanges – Athens Stock Exchange S.A.**

110 Athinon Ave., 10442 Athens, Tel: (210) 33.66.800, Fax: (210) 32.13.938

[www.athexgroup.gr](http://www.athexgroup.gr)

---

**Thessalonica Stock Exchange Center (T.S.E.C)**

16-18 Katouni Str., Thessalonica 546 25 Tel: (2310) 567.667, Fax: (2310) 530.545

**Athex Members Guarantee Fund**

14-16 Fidiou Str., Athens 106 78, Tel: (210) 33.04.682, Fax: (210) 33.04.155

**Hellenic Republic Capital Market Commission**

1 Kolokotroni Str. & 1 Stadiou Str., Athens 10562 Tel: (210) 33.77.100 Fax: (210) 33.77.173

---

**Table of Contents**

---

**Section 1: Statistical Figures of Securities, Derivatives and Lending**

Summary of Markets

Athex Indices

Analytic Figures for Athex Market's Boards and Categories

Trading Details by Athex Sectors and Financial Instruments (ETFs)

Top 10 best &amp; worst performing Shares

Derivatives Summary

**Section 2: Analytic Figures of Shares Transactions**

Analytic Figures of Shares Transactions

Shares' Notes

**Section 3: Figures of Securities Transactions**

Securities Blocks Details

Shares Rights Details

Stock Borrowing

Shares Forced Sales

Forced Sales Registered Shares

Exchange Traded Funds (ETFs) Characteristics

**Section 5: Bonds traded in Fixed Income Assets Market**

Convertible Corporate Bonds - Regulated Market

Non Convertible Corporate Bonds - Regulated Market

Government Bonds

Treasury Bills &amp; Zero Coupon Government Bonds

Government Bonds Traded with the Open Outcry Method

State Banks Bonds

**Section 6: Additional Infos**

Athex &amp; ATHEXClear Members List

List of Stocks under Market Making operations

**Section 7: Derivatives Market Analytic Figures**

Index Futures

Stock Futures

Index Options

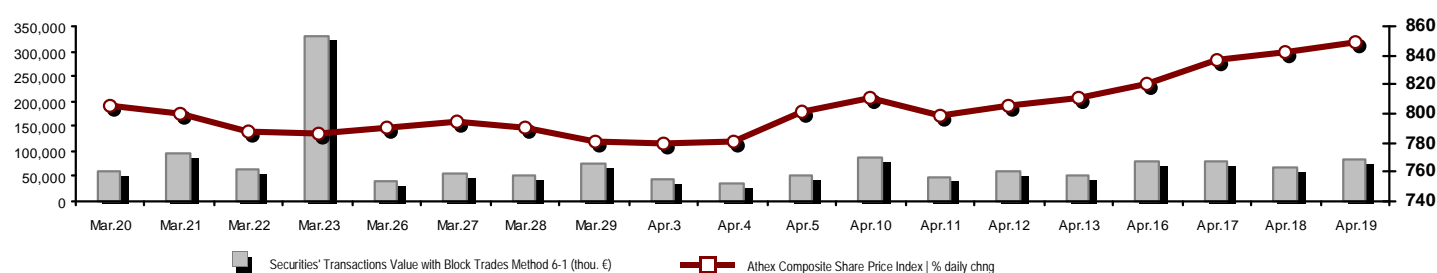
Stock Options

Stock Lending Analytic Figures

**Appendix A: Sectors codification for listed companies**

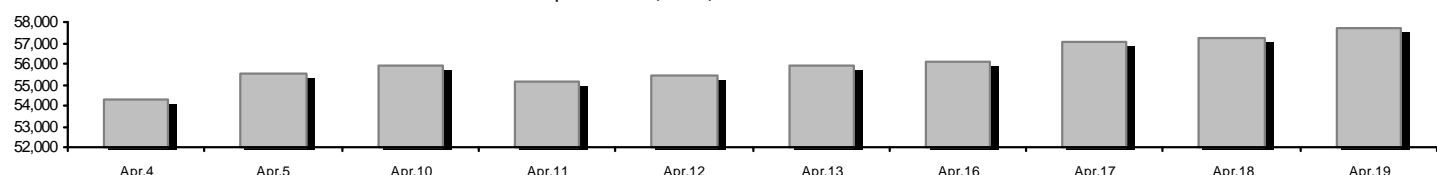
## Summary of Markets

Athex Composite Share Price Index vs Shares and Derivatives Transactions Value

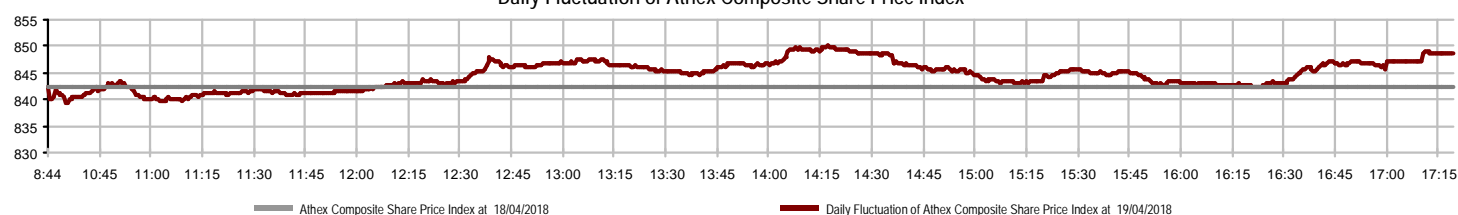


Athex Capitalisation (mill. €) **: 57,678.01	Derivatives Total Open Interest: 439,906
Daily change: mill. €   % 403.88 0.71%	in Index Futures   % daily chng 9,931 -1.15%
Yearly Avg Capitalisation: mill. €   % chng prev year Avg 56,259.29 12.17%	in Stock Futures   % daily chng 422,990 0.54%
Athex Composite Share Price Index   % daily chng 848.71 0.76%	in Index Options   % daily chng 5,464 1.49%
Athex Composite Share Price Index Capitalisation (mill. €) 52,476.67	in Stock Options   % daily chng 1,521 2.01%
Daily change (mill. €) 392.82	
Securities' Transactions Value with Block Trades Method 6-1 ( 81,974.03	Derivatives Contracts Volume: 63,597
Daily change: % 14,407.02 21.32%	Daily change: pieces   % -40,090 -38.66%
YtD Avg Trans. Value: thou. €   % chng prev year Avg 69,928.93 20.19%	YtD Avg Derivatives Contracts % chng prev year Avg 60,146 -22.37%
Blocks Transactions Value of Method 6-1 (thou. €) 27,335.98	Derivatives Trades Number: 3,745
Blocks Transactions Value of Method 6-2 & 6-3 (thou. €) 21.96	Daily change: number   % -141 -3.63%
Bonds Transactions Value (thou.€) 525.94	YtD Avg Trades number % chng prev year Avg 3,213 22.40%
Securities' Transactions Volume with Block Trades Method 6-1 (th 106,493.46	Lending Total Open Interest: 436,971
Daily change: thou. pieces   % 56,011.82 110.95%	Daily change: pieces   % 120 0.03%
YtD Avg Volume: % chng prev year Avg 52,289.62 -27.47%	Lending Volume (Multilateral/Bilateral) 8,120
Blocks Transactions Volume of Method 6-1 (thou. Pieces) 69,585.84	Daily change: pieces   % -392,260
Blocks Transactions Volume of Method 6-2 & 6-3 (thou. Pieces) 5.00	Multilateral Lending 120
Bonds Transactions Volume 517,000	Bilateral Lending 8,000
Securities' Trades Number with Block Trades Method 6-1 22,421	Lending Trades Number: 4
Daily change: number   % -4,231 -15.87%	Daily change: % -14
YtD Avg Trades number % chng prev year Avg 23,115 32.33%	Multilateral Lending Trades Number 1
Number of Blocks Method 6-1 12	Bilateral Lending Trades Number 3
Number of Blocks Method 6-2 & 6-3 2	
Number of Bonds Transactions 24	

Athex Capitalisation (mill. €) \*\*



Daily Fluctuation of Athex Composite Share Price Index



## Athex Indices

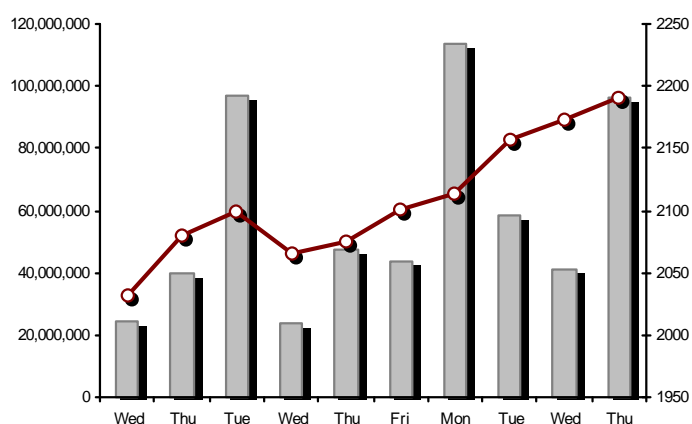
Index name	19/04/2018	18/04/2018	pts.	%	Min	Max	Year min	Year max	Year change
Athex Composite Share Price Index	848.71 #	842.34	6.37	0.76%	839.32	850.02	767.17	895.64	5.78% #
FTSE/Athex Large Cap	2,190.38 #	2,173.23	17.15	0.79%	2,163.33	2,190.77	1,988.09	2,275.91	5.14% #
FTSE/Athex Mid Cap Index	1,301.05 #	1,297.64	3.41	0.26%	1,292.71	1,310.25	1,197.46	1,417.74	8.58% #
FTSE/ATHEX-CSE Banking Index	735.09 #	733.32	1.77	0.24%	720.63	737.27	576.07	755.70	10.85% #
FTSE/ATHEX Global Traders Index Plus	2,539.94 #	2,514.38	25.56	1.02%	2,514.38	2,553.33	2,338.51	2,656.94	8.56% #
FTSE/ATHEX Global Traders Index	2,319.97 #	2,294.98	24.99	1.09%	2,291.11	2,321.46	2,147.07	2,452.53	6.50% #
FTSE/ATHEX Mid & Small Cap Factor-Weighted Ind	2,374.44 €	2,388.42	-13.98	-0.59%	2,371.02	2,399.21	1,953.64	2,417.96	21.52% #
ATHEX Mid & SmallCap Price Index	4,321.89 #	4,295.97	25.92	0.60%	4,295.97	4,351.72	3,459.89	4,362.94	24.83% #
FTSE/Athex Market Index	542.48 #	538.34	4.14	0.77%	536.09	542.55	493.66	564.78	5.35% #
FTSE Med Index	4,187.21 #	4,182.49	4.72	0.11%			3,923.92	4,523.69	-3.42% €
Athex Composite Index Total Return Index	1,321.88 #	1,311.97	9.91	0.76%	1,307.25	1,323.93	1,194.88	1,392.60	5.97% #
FTSE/Athex Large Cap Total Return	3,178.59 #	3,153.71	24.88	0.79%			2,927.55	3,277.20	5.30% #
FTSE/ATHEX Large Cap Net Total Return	943.58 #	936.19	7.39	0.79%	931.93	943.75	856.44	979.13	5.29% #
FTSE/Athex Mid Cap Total Return	1,566.43 #	1,562.32	4.11	0.26%			1,473.71	1,702.90	8.59% #
FTSE/ATHEX-CSE Banking Total Return Index	704.43 #	702.73	1.70	0.24%			563.29	719.95	10.85% #
Hellenic Mid & Small Cap Index	1,110.70 #	1,103.87	6.83	0.62%	1,102.49	1,113.08	1,030.53	1,185.73	7.62% #
FTSE/Athex Banks	971.23 #	968.89	2.34	0.24%	952.13	974.11	761.12	998.46	10.85% #
FTSE/Athex Financial Services	1,166.09 €	1,171.25	-5.16	-0.44%	1,163.73	1,183.16	1,049.99	1,309.27	3.61% #
FTSE/Athex Industrial Goods & Services	2,529.03 #	2,469.45	59.58	2.41%	2,461.31	2,529.03	2,237.30	2,717.62	12.59% #
FTSE/Athex Retail	2,503.45 #	2,463.14	40.31	1.64%	2,460.26	2,517.85	2,318.22	2,921.52	-10.01% €
FTSE/ATHEX Real Estate	3,386.29 #	3,373.29	13.00	0.39%	3,363.47	3,400.42	3,173.04	3,587.02	-0.66% €
FTSE/Athex Personal & Household Goods	8,313.95 #	8,195.00	118.95	1.45%	8,144.00	8,313.95	7,811.21	8,843.95	3.92% #
FTSE/Athex Food & Beverage	10,688.15 #	10,666.33	21.82	0.20%	10,580.05	10,753.82	9,316.14	11,509.28	5.27% #
FTSE/Athex Basic Resources	4,637.44 #	4,488.90	148.54	3.31%	4,488.90	4,731.18	3,746.36	4,731.18	15.00% #
FTSE/Athex Construction & Materials	2,873.03 #	2,858.32	14.71	0.51%	2,836.66	2,890.71	2,643.74	3,244.17	1.95% #
FTSE/Athex Oil & Gas	4,675.39 #	4,638.77	36.62	0.79%	4,638.77	4,716.18	4,408.15	5,031.64	3.22% #
FTSE/Athex Chemicals	10,683.77 €	10,706.99	-23.22	-0.22%	10,579.24	10,772.83	10,044.87	12,117.06	-6.87% €
FTSE/Athex Travel & Leisure	1,750.16 #	1,744.77	5.39	0.31%	1,732.28	1,762.58	1,605.33	1,962.01	-4.35% €
FTSE/Athex Technology	1,050.51 #	1,038.12	12.39	1.19%	1,036.97	1,058.60	909.94	1,116.72	15.35% #
FTSE/Athex Telecommunications	3,248.03 #	3,165.46	82.57	2.61%	3,137.93	3,250.78	2,923.23	3,526.04	2.61% #
FTSE/Athex Utilities	2,277.07 €	2,281.70	-4.63	-0.20%	2,258.95	2,289.19	1,981.38	2,508.45	14.29% #
FTSE/Athex Health Care	427.28 €	436.48	-9.20	-2.11%	427.28	440.62	256.65	454.42	65.60% #
Athex All Share Index	203.06 #	201.64	1.42	0.70%	203.06	203.06	190.53	209.09	6.73% #
Hellenic Corporate Bond Index	118.28 #	118.27	0.01	0.01%			116.96	118.28	1.14% #
Hellenic Corporate Bond Price Index	100.01 €	100.01	0.00	0.00%			99.91	100.55	0.06% #

Note 1: FTSE/Med 100, Greece & Turkey 30 Rt., Hellenic Corporate Bond Price Index and Hellenic Corporate Bond Index closing prices refer to the previous trading day of 17/04/2018.

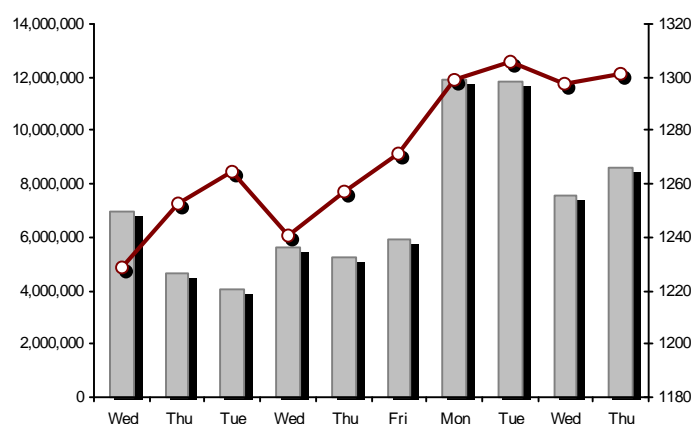
Note 2: The Hellenic Mid & Small Cap Index is a Customized index calculated by the Athens Exchange.

## Athex Indices

FTSE/Large Cap

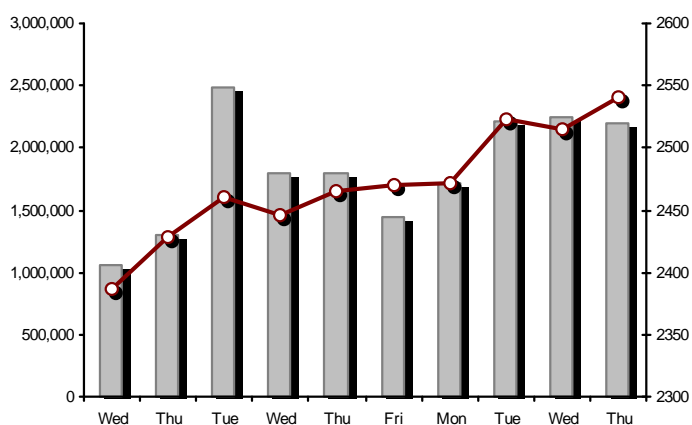


19/04/2018: 0.79% FTSE/Athex Mid Cap Index



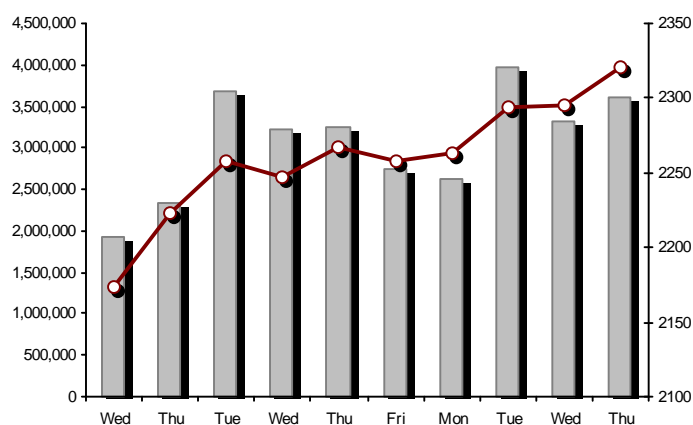
19/04/2018: 0.26%

FTSE/ATHEX Global Traders Index Plus



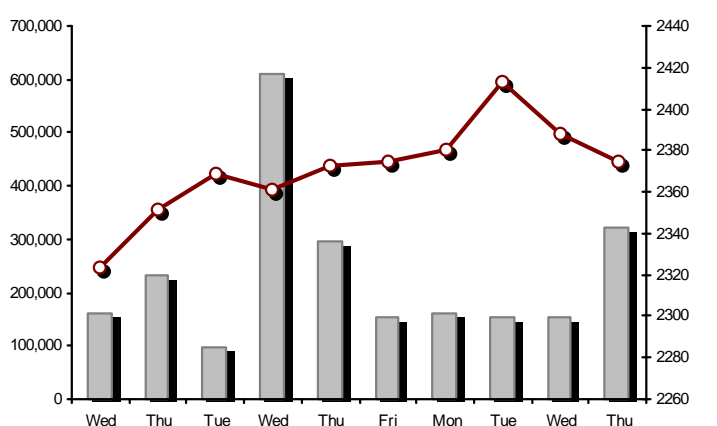
19/04/2018: 1.02%

FTSE/ATHEX Global Traders Index



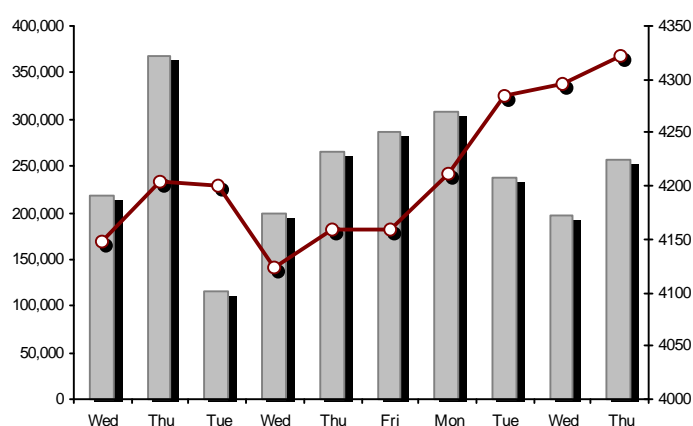
19/04/2018: 1.09%

FTSE/ATHEX Mid &amp; Small Cap Factor-Weighted Index



19/04/2018: -0.59%

ATHEX Mid &amp; SmallCap Price Index



19/04/2018: 0.60%

Indices volume of transactions

Indices closing prices

## Analytic Figures for Athex Market's Boards and Categories

	Total Traded Securities	Main Market	Surveillance	Exchange Traded Funds (ETFs)
Totals	139	120	19	0
Gain / Lose / Same:	59 / 48 / 32	51 / 43 / 26	8 / 5 / 6	0 / 0 / 0
Athex Capitalisation (mill. €) **	57,678.01	57,408.15	269.86	
Daily Average Trans/ons Value(thou.€)	69,928.93	69,945.53	33.35	56.90
Transactions Value	81,995.99	81,854.60	141.39	0.00
Main Board:	54,638.05	54,496.67	141.39	0.00
Blocks Board 6_2_3:	27,357.94	27,357.94	0.00	0.00
Forced Sales Board:	0.00	0.00	0.00	0.00
Special Terms Board:	0.00	0.00	0.00	0.00
Daily Average Transactions Volume	52,289,622	52,139,410	226,276	2,586
Transactions Volume	106,498,457	105,614,914	883,543	0
Main Board:	36,907,621	36,024,078	883,543	0
Blocks Board 6_2_3:	69,590,836	69,590,836	0	0
Forced Sales Board:	0	0	0	0
Special Terms Board:	0	0	0	0
Daily Average Number of Trades	23,115	22,999	116	2
Number of Trades	22,423	22,276	147	0
Main Board:	22,409	22,262	147	0
Blocks Board 6_2_3:	14	14	0	0
Forced Sales Board:	0	0	0	0
Special Terms Board:	0	0	0	0

## Trading Details by Athex Sectors and Financial Instruments (ETFs)

Code	Sectors	Gain / Lose / Same	Number of Trades	Transactions Volume	Transactions Value	% of Total Trans. Value
8300	- Banks	4 / 2 / 0	6,323	96,106,780	44,965,017.96	54.84%
1700	- Basic Resources	6 / 0 / 3	2,646	843,936	8,208,944.99	10.01%
1300	- Chemicals	1 / 2 / 1	159	37,602	53,754.76	0.07%
2300	- Construction & Materials	6 / 6 / 3	1,570	591,462	2,031,888.21	2.48%
12000	- Financial Instruments	0 / 0 / 0	---	---	---	---
8700	- Financial Services	2 / 2 / 0	1,141	3,931,412	837,869.09	1.02%
3500	- Food & Beverage	5 / 5 / 5	382	230,634	1,059,594.72	1.29%
4500	- Health Care	3 / 3 / 0	274	255,379	235,312.85	0.29%
2700	- Industrial Goods & Services	10 / 7 / 2	1,167	1,304,453	1,687,689.15	2.06%
8500	- Insurance	0 / 1 / 0	23	3,808	14,362.09	0.02%
5500	- Media	0 / 1 / 0	31	14,739	1,892.54	0.00%
500	- Oil & Gas	1 / 1 / 0	1,590	246,473	3,192,454.92	3.89%
3700	- Personal & Household Goods	8 / 3 / 5	1,191	349,878	2,777,083.59	3.39%
8600	- Real Estate	2 / 4 / 4	537	192,808	547,306.67	0.67%
5300	- Retail	1 / 0 / 2	750	151,409	2,557,561.70	3.12%
9500	- Technology	5 / 4 / 3	502	379,049	371,107.71	0.45%
6500	- Telecommunications	1 / 0 / 0	1,106	620,165	7,263,015.12	8.86%
5700	- Travel & Leisure	3 / 3 / 3	1,544	728,016	4,353,504.80	5.31%
7500	- Utilities	1 / 4 / 1	1,487	510,454	1,837,627.29	2.24%

## Top 10 best &amp; worst performing Shares

Main Market					
With positive Price change	Closing price	change	With negative Price change	Closing price	change
EKTER SA (CR)	1.05	9.38% #	KEKROPS SA (CR)	1.59	-3.05% <b>⚡</b>
IASO SA (CR)	0.974	4.51% #	HYGEIA SA (CR)	0.929	-2.11% <b>⚡</b>
VIOHALCO SA/NV (CB)	3.73	4.34% #	HELLENIC EXCHANGES-A.S.E. (CR)	5.08	-1.74% <b>⚡</b>
MARFIN INVESTMENT GROUP (CR)	0.1676	3.97% #	ELLAKTOR (CR)	1.604	-1.35% <b>⚡</b>
GR. SARANTIS SA (CR)	14.7	3.52% #	INTRALOT (CR)	1.176	-1.34% <b>⚡</b>
MYTILINEOS HOLDINGS (CR)	10.54	3.33% #	GEK TERNA (CR)	5.18	-1.33% <b>⚡</b>
ATTICA BANK S.A. (CR)	0.0362	3.13% #	EUROBANK ERGASIAS (CR)	0.97	-1.02% <b>⚡</b>
PAPOUTSANIS (CR)	0.442	2.79% #	TERNA ENERGY (CR)	5.1	-0.97% <b>⚡</b>
PLAISIO COMPUTERS SA (CR)	4.52	2.73% #	NIREFS SA (CR)	0.2795	-0.89% <b>⚡</b>
OTE (CR)	11.8	2.61% #	PPC (CR)	2.904	-0.89% <b>⚡</b>
With the highest Transactions Value	Value (thou. €)	change	With the highest Transactions Volume	Volume	change
NATIONAL BANK (CR)	25,897.79	0.57% #	NATIONAL BANK (CR)	81,686,456	0.57% #
ALPHA BANK (CR)	9,060.55	1.04% #	EUROBANK ERGASIAS (CR)	5,575,378	-1.02% <b>⚡</b>
MYTILINEOS HOLDINGS (CR)	8,079.72	3.33% #	ALPHA BANK (CR)	4,309,432	1.04% #
OTE (CR)	7,263.02	2.61% #	MARFIN INVESTMENT GROUP (CR)	3,895,165	3.97% #
EUROBANK ERGASIAS (CR)	5,421.82	-1.02% <b>⚡</b>	ATTICA BANK S.A. (CR)	3,164,663	3.13% #
PIRAEUS BANK (CR)	4,443.22	-0.62% <b>⚡</b>	PIRAEUS BANK (CR)	1,368,834	-0.62% <b>⚡</b>
OPAP (CR)	3,575.45	0.51% #	MYTILINEOS HOLDINGS (CR)	767,578	3.33% #
FOLLI FOLLIE (CR)	2,556.21	1.68% #	OTE (CR)	620,165	2.61% #
MOTOR OIL (CR)	2,000.49	1.31% #	OPAP (CR)	365,145	0.51% #
JUMBO SA (CR)	1,556.71	1.18% #	INTRALOT (CR)	323,314	-1.34% <b>⚡</b>

Note: Stocks that are not included in the "Low Dispersion" and "Under Supervision" categories, and the transactions value is more than 10,000 €.



## Derivatives Summary

	Number of Trades	Volume	Open Interest
Index Futures	627	5,341	9,931
FTSE/Athex Large Cap	627	5,341	9,931
Stock Futures	3,084	58,043	422,990
ADMIE (IPTO) HOLDING S.A. (CR)	45	204	8,899
ALPHA BANK (CR)	203	5,630	17,587
ATTICA BANK S.A. (CR)	0	0	6,916
CC HBC AG (CR)	6	13	298
CENERGY HOLDINGS (CB)	26	185	5,284
ELLAKTOR (CR)	60	277	10,710
EUROBANK ERGASIAS (CR)	226	5,401	35,397
EYDAP S.A. (CR)	4	8	1,269
FOLLI FOLLIE (CR)	81	101	797
FOURLIS (CR)	6	19	167
GEK TERNA (CR)	56	232	6,262
GRIVALIA PROPERTIES (CR)	2	3	113
HELLENIC EXCHANGES-A.S.E. (CR)	11	21	1,178
HELLENIC PETROLEUM (CR)	42	144	3,896
INTRACOM HOLDINGS (CR)	11	229	4,760
INTRALOT (CR)	31	212	10,576
JUMBO SA (CR)	35	82	666
LAMDA DEVELOPMENT SA (CR)	18	63	2,894
MARFIN INVESTMENT GROUP (CR)	291	12,725	96,149
MOTOR OIL (CR)	14	22	874
MYTILINEOS HOLDINGS (CR)	334	2,077	7,120
NATIONAL BANK (CR)	301	22,723	146,058
OPAP (CR)	54	216	3,023
OTE (CR)	89	361	4,792
P.P.A. S.A. (CR)	9	10	975
PIRAEUS BANK (CR)	748	5,443	19,012
PPC (CR)	157	738	10,339
TERNA ENERGY (CR)	52	157	7,636
TITAN CEMENT (CR)	23	28	586
VIOHALCO SA/NV (CB)	149	719	8,757
Index Options	33	183	5,464
FTSE/Athex Large Cap	33	183	5,464
Stock Options	1	30	1,521
ALPHA BANK (CR)	1	30	30
NATIONAL BANK (CR)	0	0	450
OPAP (CR)	0	0	91
OTE (CR)	0	0	25
PIRAEUS BANK (CR)	0	0	610
PPC (CR)	0	0	315
Total Derivatives Traded	3,745	63,597	439,906

Number of Outstanding Securities	Nominal Value	Dividends [1]			Date of Last Coupon Dividend [2]		Note	Shares	Closing price	% change	Previous closing price/date	Open price	Price min	Price max	Last price	Avg price	Last Bid [7]	Last Ask [7]	P/E after	Year	Volume	Trades	Transactions Value[8]	Company Mkt Value (thou. €)	Year low	Year high	Sector[ 4]
----------------------------------	---------------	---------------	--	--	----------------------------------	--	------	--------	---------------	----------	-----------------------------	------------	-----------	-----------	------------	-----------	--------------	--------------	-----------	------	--------	--------	-----------------------	-----------------------------	----------	-----------	------------

Main Market - High Liquidity Class

1,543,699,381	0.300	---	---	---	07/04/2008	18/04/2017	---	ALPHA BANK (CR)	2.128	1.04 #	2.106	18/04/2018	2.076	2.07	2.128	2.128	2.102	5000@2.11	31972@2.13	---	---	4,309,432	1,331	9,060,551.00	3,284,992.28	1.676	2.128	8355
2,339,353,394	0.300	---	---	---	04/06/2008	01/12/2015	---	ATTICA BANK S.A. (CR)	0.0362	3.13 #	0.035	18/04/2018	0.0351	0.0339	0.0362	0.0362	0.035	38782@0.036	2500@0.036	---	---	3,164,663	250	111,066.64	84,684.59	0.02970	0.0414	8355
190,162,681	---	---	---	---	---	07/12/2016	---	CENERGY HOLDINGS (CB)	1.28	0.79 #	1.27	18/04/2018	1.262	1.262	1.3	1.28	1.273	2000@1.27	500@1.29	---	---	204,136	235	259,817.00	243,408.23	1.108	1.6	2727
370,763,039	6.70	0.4	0.44	---	29/06/2017	29/04/2013	---	CC HBC AG (CR)	28.64	0.21 #	28.58	18/04/2018	28.78	28.35	28.82	28.64	28.548	90@28.31	1000@28.83	---	---	34,410	155	982,331.17	10,618,653.44	24.93	30.87	3537
66,948,210	0.300	---	---	---	22/09/2015	22/09/2015	---	FOLLI FOLLIE (CR)	16.98	1.68 #	16.7	18/04/2018	16.7	16.68	17.08	16.98	16.951	710@16.90	4696@17.00	---	---	150,799	747	2,556,213.90	1,136,780.61	15.7	19.9	5379
101,260,000	2.13	0.3134	0.1902	0.3646	23/03/2018	08/01/2014	---	GRIVALIA PROPERTIES (CR)	9.17	0.77 #	9.1	18/04/2018	9.17	9.06	9.22	9.17	9.143	556@9.18	312@9.22	40.89	2016	11,661	108	106,612.39	928,554.20	8.59	9.65	8675
133,025,996	1.41	---	---	---	03/07/2007	07/01/2002	---	INTRACOM HOLDINGS (CR)	0.846	1.32 #	0.835	18/04/2018	0.835	0.828	0.855	0.846	0.845	992@0.841	534@0.846	---	---	305,241	256	257,990.03	112,539.99	0.731	0.983	9578
136,059,759	0.880	---	0.36	0.36	26/03/2018	05/03/2014	---	JUMBO SA (CR)	15.38	1.18 #	15.2	18/04/2018	15.34	15.08	15.38	15.38	15.245	8401@15.20	3829@15.40	25.38	2016	102,116	522	1,556,710.82	2,092,599.09	14.28	16.4	3747
79,721,775	0.300	---	---	---	30/05/2007	23/06/2014	---	LAMDA DEVELOPMENT SA (CR)	6.71	-0.15 €	6.72	18/04/2018	6.71	6.66	6.75	6.71	6.722	571@6.71	565@6.75	---	---	43,715	177	293,845.92	534,933.11	6.22	7.52	8633
939,510,748	0.300	---	---	---	26/04/2007	29/08/2014	---	MARFIN INVESTMENT GROUP (CR)	0.1676	3.97 #	0.161	18/04/2018	0.1594	0.1594	0.1698	0.1676	0.167	3850@0.167	84700@0.169	---	---	3,895,165	934	652,013.08	157,462.00	0.12380	0.1836	8775
259,189,761	---	---	---	---	26/02/2016	---	---	VIOHALCO SA/NV (CB)	3.73	4.34 #	3.575	18/04/2018	3.6	3.555	3.73	3.73	3.647	500@3.70	1815@3.74	---	---	279,694	556	1,020,148.88	966,777.81	3.21	4	2727
232,000,000	2.12	---	---	---	---	19/06/2017	---	ADMIE (IPTO) HOLDING S.A. (CR)	1.89	-0.42 €	1.898	18/04/2018	1.898	1.862	1.898	1.89	1.884	2000@1.87	1000@1.89	10.17	2017	104,984	272	197,808.45	438,480.00	1.718	2.28	7535
71,417,100	0.650	0.7	0.4	---	17/05/2017	27/06/2014	---	AEGEAN AIRLINES (CR)	9.26	-0.43 €	9.3	18/04/2018	9.35	9.2	9.4	9.26	9.312	504@9.26	300@9.36	---	---	21,736	142	202,395.67	661,322.35	8.17	9.4	5751
103,423,291	0.570	---	---	---	01/08/2011	19/04/2016	---	GEK TERNA (CR)	5.18	-1.33 €	5.25	18/04/2018	5.26	5.13	5.26	5.18	5.201	1203@5.17	300@5.23	---	---	107,871	384	561,010.71	535,732.65	4.415	5.64	2357
232,000,000	2.48	---	---	---	20/07/2015	12/12/2001	---	PPC (CR)	2.904	-0.89 €	2.93	18/04/2018	2.93	2.894	2.932	2.904	2.919	4071@2.90	661@2.91	---	---	200,882	491	586,367.27	673,728.00	1.95	3.35	7535
9,147,151,527	0.300	---	---	---	16/05/2008	30/11/2015	---	NATIONAL BANK (CR)	0.3176	0.57 #	0.316	18/04/2018	0.3096	0.3096	0.3178	0.3176	0.317	62805@0.314	109564@0.318	---	---	81,686,456	1,420	25,897,785.85	2,905,135.32	0.252	0.355	8355
177,001,313	1.03	---	---	---	05/07/2011	20/12/2007	---	ELLAKTOR (CR)	1.604	-1.35 €	1.626	18/04/2018	1.626	1.602	1.646	1.604	1.618	1184@1.60	3000@1.61	---	---	180,963	372	292,856.59	283,910.11	1.5	2.01	2357
60,599,000	0.840	0.1026	0.065	---	30/05/2017	24/07/2017	---	HELLENIC EXCHANGES-A.S.E. (CR)	5.08	-1.74 €	5.17	18/04/2018	5.14	5.08	5.18	5.08	5.129	2460@5.08	250@5.10	---	---	36,213	205	185,754.06	307,842.92	4.525	5.87	8777
305,635,185	2.18	---	---	0.15	04/12/2017	01/10/2003	---	HELLENIC PETROLEUM (CR)	8.58	-0.23 €	8.6	18/04/2018	8.6	8.46	8.62	8.58	8.551	806@8.51	2030@8.58	---	---	139,387	489	1,191,967.22	2,622,349.89	7.54	8.88	537
106,500,000	0.600	0.31	0.11	---	22/06/2017	28/01/2000	---	EYDAP S.A. (CR)	6.2	1.64 #	6.1	18/04/2018	6.06	6.06	6.21	6.2	6.15	500@6.15	2568@6.20	---	---	18,291	147	112,494.93	660,300.00	5.72	6.97	7577
158,961,721	0.300	---	---	---	30/05/2013	14/11/2007	---	INTRALOT (CR)	1.176	-1.34 €	1.192	18/04/2018	1.172	1.172	1.194	1.176	1.184	50@1.17	50492@1.18	---	---	323,314	385	382,832.15	186,938.98	1.05	1.512	5752
19,804,134	0.300	---	---	---	01/07/2004	06/11/2017	---	KEKROPS SA (CR)	1.59	-3.05 €	1.64	18/04/2018	1.66	1.59	1.67	1.59	1.624	1500@1.58	1360@1.62	---	2016	54,718	149	88,844.46	31,488.57	0.72	1.84	8633
110,782,980	0.750	0.65	0.9	0.3	11/12/2017	04/11/2013	---	MOTOR OIL (CR)	18.6	1.31 #	18.36	18/04/2018	18.48	18.46	18.84	18.6	18.681	40@18.56	30@18.66	---	---	107,086	1,101	2,000,487.70	2,060,563.43	17.98	20.45	533
142,891,161	0.970	---	---	---	11/05/2009	07/07/2017	---	MYTILINEOS HOLDINGS (CR)	10.54	3.33 #	10.2	18/04/2018	10.2	10.16	10.76	10.54	10.526	3500@10.48	1645@10.58	---	---	767,578	2,415	8,079,723.66	1,506,072.84	8.49	10.76	1755
25,000,000	2.00	0.1114	0.0892	---	19/07/2017	08/08/2003	---	P.P.A. S.A. (CR)	16.78	1.08 #	16.6	18/04/2018	16.48	16.22	16.78	16.78	16.53	100@16.60	870@16.78	37.16	2017	11,509	154	190,243.50	419,500.00	15.44	17.7	2777
319,000,000	0.300	0.7	0.72	0.1	11/12/2017	25/04/2001	---	OPAP (CR)	9.8	0.51 #	9.75	18/04/2018	9.77	9.65	9.87	9.8	9.792	3647@9.74	110@9.81	---	---	365,145	963	3,575,452.54	3,126,200.00	8.915	11.15	5752
490,150,389	2.83	0.1	0.16	---	07/07/2017	18/06/1998	---	OTE (CR)	11.8	2.61 #	11.5	18/04/2018	11.42	11.4	11.84	11.8	11.711	4536@11.71	40292@11.80	---	---	620,165	1,106	7,263,015.12	5,783,774.59	10.61	12.81	6535
436,659,164	6.00	---	---	---	16/05/2008	31/07/2017	---	PIRAEUS BANK (CR)	3.226	-0.62 €	3.246	18/04/2018	3.19	3.184	3.31	3.226	3.246	500@3.22	26000@3.23	---	---	1,368,834	1,747	4,443,220.52	1,408,662.46	2.49	3.934	8355
34,938,742	1.55	0.16	0.175	---	09/05/2017	27/07/2000	---	GR. SARANTIS SA (CR)	14.7	3.52 #	14.2	18/04/2018	14.35	13.95	14.7	14.7	14.16	12@14.15	286@14.80	---	---	51,644	244	731,293.45	513,599.51	12.65	16.55	3767
113,918,936	0.300	0.0935	0.0939	0.0419	10/01/2018	24/03/2017	---	TERNA ENERGY (CR)	5.1	-0.97 €	5.15	18/04/2018	5.15	5.05	5.18	5.1	5.113	500@5.08	1264@5.10	---	---	177,364	540	906,834.74	580,986.57	4.4	5.35	7537
77,063,568	3.00	0.3099	0.1049	---	13/06/2017	13/06/2017	---	TITAN CEMENT (CR)	21.95	1.62 #	21.6	18/04/2018	21.8	21.35	21.95	21.95	21.799	29@21.85	1597@21.95	---	---	40,126	278	874,715.55	1,820,217.64	19.78	25.35	2353
2,185,998,765	0.300	---	---	---	02/05/2008	27/11/2015	---	EUROBANK ERGASIAS (CR)	0.97	-1.02 €	0.98	18/04/2018	0.96	0.952	0.9875	0.97	0.972	65@0.966	4276@0.973	---	---	5,575,378	1,532	5,421,817.75	2,120,418.80	0.70250	0.9875	8355

Main Market - Medium Liquidity Class

13,126,020	0.610	---	---	---	08/07/2010	08/09/2017	---	AS COMPANY SA (CR)	2.22	---	↘	2.22	18/04/2018	2.22	2.22	2.22	2.22	50@2.10	100@2.20	---	---	600	2	1,332.00	29,139.76	1.58	2.24	5379	
191,660,320	0.300	---	---	---	20/07/2009	29/12/2010	---	ATTICA HOLDINGS (CR)	1.65	---	↘	1.65	18/04/2018	1.65	1.62	1.67	1.65	1.641	2000@1.61	1020@1.65	---	---	2,100	11	3,446.00	316,239.53	1.31	1.77	5759
12,213,750	0.320	0.85	0.85	---	15/06/2017	22/11/2013	---	AUTOHELLAS SA (CR)	23.4	-0.85	€	23.6	18/04/2018	23.6	23.4	23.6	23.6	23.425	63@23.40	1027@23.60	---	---	7,778	20	182,199.80	285,801.75	22.4	26	5759
11,921,531	2.33	---	---	---		31/07/2017	---	BRIQ PROPERTIES (CR)	1.86	-0.80	€	1.875	18/04/2018	1.895	1.86	1.895	1.86	1.878	200@1.86	300@1.89	9.89	2017	1,000	7	1,877.50	22,174.05	1.72	2.1	8671

Number of Outstanding Securities	Nominal Value	Dividends [1]			Date of Last Coupon		Note	Shares	Closing price	% change	Previous closing price/date	Open price	Price min	Price max	Last price	Avg price	Last Bid [7]	Last Ask [7]	P/E after	Year	Volume	Trades	Transactions Value[8]	Company Mkt Value (thou. €)	Year low	Year high	Sector[ 4]
		2015	2016	2017	Dividend [2]	Right																					
15,816,009	0.300	---	---	---	01/07/2009	17/07/2000	---	BYTE COMPUTER SA (CR)	0.505	-0.98 <b>€</b>	0.51 18/04/2018	0.505	0.5	0.51	0.51	0.507	300@0.490	80@0.510	---	---	470	4	238.20	7,987.08	0.45	0.525	9533
101,123,806	0.360	---	---	---	22/07/2010	28/06/2011	---	CENTRIC HOLDINGS (CR)	0.158	1.61 <b>#</b>	0.156 18/04/2018	0.158	0.158	0.158	0.158	0.158	300@0.154	900@0.158	---	---	100	1	15.80	15,977.56	0.143	0.209	5752
9,907,500	0.300	---	---	---	06/10/2005	13/02/2002	---	CPI SA (CR)	0.278	-4.14 <b>€</b>	0.29 18/04/2018	0.278	0.278	0.278	0.278	0.278	500@0.250	400@0.278	79.60	2017	100	1	27.80	2,754.29	0.122	0.338	9572
51,643,688	0.970	---	---	---	21/06/2010	21/07/2017	---	FOURLIS (CR)	5.58	1.46 <b>#</b>	5.5 18/04/2018	5.56	5.49	5.6	5.58	5.547	150@5.55	390@5.58	---	---	73,168	177	405,851.01	288,171.78	5.41	6.26	3722
20,578,374	0.620	0.07	0.07	---	07/06/2017	18/05/2015	---	INFORM P. LYKOS SA (CR)	0.86	-0.46 <b>€</b>	0.864 18/04/2018	0.86	0.858	0.872	0.86	0.859	28@0.860	3091@0.872	---	---	3,260	13	2,801.89	17,697.40	0.738	0.998	2791
30,477,156	0.300	---	---	---	12/08/2008	17/10/2017	---	INTRACOM CONSTR. (CR)	1.3	---	1.3 18/04/2018	1.3	1.29	1.32	1.3	1.306	384@1.30	800@1.31	---	---	28,846	45	37,670.70	39,620.30	1.01	1.47	2357
77,654,850	0.580	---	---	---	01/07/2011	21/02/2003	---	J & P - AVAX SA (CR)	0.8	---	0.8 18/04/2018	0.8	0.79	0.808	0.8	0.801	2563@0.790	964@0.800	---	---	57,586	131	46,108.61	62,123.88	0.69	1.05	2357
468,700	1	0.73	0.73	24/08/2017	21/05/2004	---	MERMEREN KOMB. A.D. PR. (GDR)	21	1.94 <b>#</b>	20.6 18/04/2018	21.4	20.3	22	21	20.882	49@20.70	81@21.00	2.81	2016	528	17	11,025.60	9,842.70	14.8	22	1775	
10,500,000	0.950	---	---	---	24/06/2008	30/06/2017	---	MEVACO SA (CR)	1.04	2.97 <b>#</b>	1.01 18/04/2018	1.04	1.04	1.05	1.05	1.042	200@1.02	500@1.03	---	2016	250	2	260.50	10,920.00	0.95	1.15	2757
6,200,000	0.500	---	---	---	22/06/2010	01/11/1995	---	MINERVA KNITWEAR SA (CB)	0.194	---	0.194 18/04/2018	---	---	---	---	---	450@0.192	1000@0.240	---	---	---	---	---	1,202.80	0.194	0.432	3763
12,417,000	0.310	---	---	---	28/07/2008	28/08/2017	---	MLS MULTIMEDIA SA (CR)	4.4	---	4.4 18/04/2018	4.37	4.3	4.4	4.4	4.341	215@4.30	602@4.40	24.60	2016	2,905	15	12,609.76	54,634.80	4.16	4.5	9537
3,953,090	0.300	0.11	0.12	---	06/06/2017	05/12/2012	---	PAPERPACK (CR)	3.42	1.18 <b>#</b>	3.38 18/04/2018	3.26	3.26	3.46	3.46	3.418	81@3.22	294@3.46	9.69	2017	190	2	649.40	13,519.57	2.2	3.46	2723
11,812,193	0.470	---	---	---	26/03/2015	15/11/2006	---	PROFILE SA (CR)	1.335	1.91 <b>#</b>	1.31 18/04/2018	1.34	1.305	1.365	1.335	1.332	1409@1.33	9@1.34	---	---	38,536	96	51,345.43	15,769.28	0.7	1.365	9533
27,345,120	0.470	---	---	---	18/07/2005	26/02/2014	---	QUALITY & RELIABILITY SA (CR)	0.289	-3.67 <b>€</b>	0.3 18/04/2018	0.3	0.283	0.3	0.289	0.286	500@0.285	1192@0.288	---	---	22,472	34	6,417.22	7,902.74	0.253	0.365	9533
11,913,632	0.680	---	---	---	05/09/2008	08/11/2017	---	QUEST HOLDINGS (CR)	11.8	---	11.8 18/04/2018	11.95	11.8	12.1	11.8	11.848	129@11.80	224@12.00	---	---	817	23	9,680.15	140,580.86	9.3	12.65	9533
57,434,884	1.31	---	---	---	05/06/2008	12/06/2009	---	REDS S.A. (CR)	0.955	-0.52 <b>€</b>	0.96 18/04/2018	0.945	0.945	0.975	0.955	0.951	167@0.950	640@0.975	---	---	22,833	51	21,705.65	54,850.31	0.72	1.05	8633
6,456,530	1.08	---	---	---	19/07/2017	02/08/2010	---	SPACE HELLAS SA (CR)	4.98	0.81 <b>#</b>	4.94 18/04/2018	5.05	4.98	5.05	5	4.996	100@4.90	70@4.96	---	---	61	3	304.75	32,153.52	3.6	5.7	9578
3,125,463	0.300	---	---	---	16/11/1992	07/02/2017	---	UNIBIOS (CR)	0.62	5.09 <b>#</b>	0.59 18/04/2018	0.63	0.602	0.63	0.62	0.611	5@0.610	548@0.620	---	---	182	9	111.13	1,937.79	0.479	0.82	2353
2,235,600	0.350	---	---	---	21/04/2010	25/07/2017	---	AEOLIAN INVESTMENT FUND (CR)	0.465	-9.18 <b>€</b>	0.512 18/04/2018	0.465	0.465	0.465	0.465	0.465	233@0.475	200@0.504	---	2017	30	1	13.95	1,039.55	0.41	0.65	8985
22,016,250	0.370	---	---	---	15/07/2009	11/05/2000	---	ALUMIL (CR)	0.4	---	0.4 18/04/2018	0.4	0.394	0.4	0.4	0.397	500@0.393	707@0.400	---	---	3,693	13	1,465.59	8,806.50	0.3	0.462	1753
417,608	16.00	---	---	0.75	05/04/2018	05/03/2013	---	ANDROMEDA SA (CR)	22	3.77 <b>#</b>	21.2 18/04/2018	22	22	22	22	22	4@21.80	10@23.00	4.37	2017	4	1	88.00	9,187.38	18.6	23.6	8985
23,986,500	1.05	---	---	---	26/06/2009	15/03/2000	---	BIOKARPET S.A.(CR)	0.6	-3.23 <b>€</b>	0.62 18/04/2018	0.58	0.58	0.6	0.6	0.59	3476@0.600	250@0.680	---	---	1,524	3	898.90	14,391.90	0.296	0.69	3726
24,060,000	0.300	0.01	0.01	---	10/07/2017	10/07/2017	---	GEN. COMMERCIAL & IND.SA (CR)	0.62	2.48 <b>#</b>	0.605 18/04/2018	0.575	0.575	0.62	0.62	0.606	170@0.595	778@0.620	---	---	6,025	15	3,651.09	14,917.20	0.49	0.65	2797
34,720,000	0.310	---	---	---	16/06/2010	01/08/2007	---	DROMEAS SA (CR)	0.304	-2.56 <b>€</b>	0.312 18/04/2018	0.312	0.304	0.312	0.304	0.306	1500@0.302	44@0.304	---	---	28,374	19	8,694.56	10,554.88	0.18	0.352	3726
13,673,200	0.880	---	---	---	18/07/2008	26/07/2001	---	EVROFARMA SA (CR)	0.496	-1.78 <b>€</b>	0.505 18/04/2018	0.444	0.444	0.498	0.498	0.495	500@0.454	1000@0.490	---	---	800	4	396.00	6,781.91	0.324	0.595	3577
27,848,000	0.300	0.0084	---	---	16/08/2016	02/09/2003	---	NEWSPHONE HELLAS SA (CR)	0.28	-0.71 <b>€</b>	0.282 18/04/2018	0.28	0.28	0.28	0.28	0.28	300@0.252	440@0.278	---	---	6,000	2	1,680.00	7,797.44	0.23	0.316	2791
11,250,000	0.520	0.04	0.04	---	24/07/2017	09/11/2015	---	EKTER SA (CR)	1.05	9.38 <b>#</b>	0.96 18/04/2018	0.97	0.97	1.09	1.05	1.019	1000@1.04	4410@1.06	---	---	81,865	144	83,433.67	11,812.50	0.63	1.09	2357
82,667,000	0.300	---	---	---	22/07/2014	---	---	ELTECH ANEMOS S.A. (CR)	1.73	-0.86 <b>€</b>	1.745 18/04/2018	1.74	1.71	1.74	1.73	1.73	1080@1.72	1000@1.74	---	---	3,070	5	5,311.10	143,013.91	1.525	1.92	7537
18,421,516	1.00	---	---	---	07/07/2009	10/09/2010	---	ELASTRON (CR)	1.475	2.43 <b>#</b>	1.44 18/04/2018	1.44	1.435	1.475	1.475	1.457	100@1.46	170@1.48	---	---	13,614	33	19,836.05	27,171.74	1.35	1.74	1757
375,241,586	0.390	---	---	---	26/06/2008	14/07/2006	---	ELVALHALCOR (CB)	1.7	1.19 <b>#</b>	1.68 18/04/2018	1.655	1.655	1.73	1.7	1.704	130@1.70	2460@1.72	---	---	56,128	155	95,614.85	637,910.70	1.38	2.1	1755
19,864,886	5.60	0.672	0.672	0.672	08/03/2018	02/07/2008	---	BANK OF GREECE (CR)	15.25	0.99 <b>#</b>	15.1 18/04/2018	15.1	15	15.25	15.25	15.159	130@15.10	11@15.20	---	---	2,017	43	30,576.20	302,939.51	14.15	19.2	8355
26,730,187	0.520	---	---	---	23/06/2014	01/08/2017	---	ELTON SA (CR)	1.585	-0.94 <b>€</b>	1.6 18/04/2018	1.6	1.56	1.6	1.585	1.577	65@1.56	17@1.59	---	---	6,246	15	9,851.21	42,367.35	1.33	1.71	1353
51,830,520	0.300	---	---	---	23/12/2003	24/01/2007	---	SELECTED TEXT. IND. ASSOC (CR)	0.226	-0.88 <b>€</b>	0.228 18/04/2018	0.226	0.22	0.226	0.226	0.223	870@0.224	1404@0.226	---	2016	6,694	11	1,495.12	11,713.70	0.171	0.276	3763
36,300,000	1.12	0.25	0.228	---	29/06/2017	12/12/2007	---	THESSALONIKA WATER & SEWERAGE	4.94	---	4.94 18/04/2018	4.9	4.84	4.94	4.94	4.914	502@4.84	4989@4.94	---	---	5,863	32	28,810.80	179,322.00	4.46	5.22	7577
27,503,677	0.630	0.06	0.1	---	24/05/2017	18/10/1999	---	EUROPEAN RELIANCE INSUR. (CR)	3.77	-0.26 <b>€</b>	3.78 18/04/2018	3															

Number of Outstanding Securities	Nominal Value	Dividends [1]			Date of Last Coupon		Note	Shares	Closing price	% change	Previous closing price/date		Open price	Price min	Price max	Last price	Avg price	Last Bid [7]	Last Ask [7]	P/E after	Year	Volume	Trades	Transactions Value[8]	Company Mkt Value (thou. €)	Year low	Year high	Sector[ 4]
		2015	2016	2017	Dividend [2]	Right																						
7,500,000	0.610	---	---	---	19/06/2015	11/07/2017	---	S.KANAKIS SA (CR)	3.56	0.57 #	3.54	18/04/2018	3.64	3.5	3.64	3.56	3.529	29@3.52	467@3.56	12.15	2017	905	11	3,193.68	26,700.00	3.16	4.06	3577
14,679,792	1.68	---	0.07	---	28/06/2017	04/09/2000	---	KARATZIS SA (CR)	6.35	---	6.35	18/04/2018	6.35	6.25	6.4	6.35	6.348	66@6.30	103@6.50	---	---	2,310	67	14,664.25	93,216.68	5.2	6.85	2723
40,219,218	0.300	---	---	---	20/06/2017	09/07/2013	---	KLOUKINAS - LAPPAS SA (CR)	0.818	0.74 #	0.812	18/04/2018	0.824	0.8	0.824	0.818	0.808	300@0.806	399@0.818	---	---	31,835	76	25,728.83	32,899.32	0.702	0.842	2357
11,510,102	0.890	---	---	---	24/06/2005	06/10/1999	---	NAFPAKTOS TEXTILE IND. SA (CB)	0.54	---	0.54	18/04/2018	0.54	0.54	0.54	0.54	0.54	500@0.410	1000@0.585	---	---	1,090	4	588.60	6,215.46	0.31	0.665	3763
21,224,340	0.420	---	0.01	---	24/07/2017	25/04/2006	---	KORDELLOS BROS SA (CR)	0.505	1.41 #	0.498	18/04/2018	0.498	0.498	0.505	0.505	0.499	200@0.482	350@0.505	16.19	2016	1,295	7	646.84	10,718.29	0.322	0.535	1757
13,586,500	0.390	---	---	---	25/06/2010	28/05/2008	---	KORRES (CR)	5.08	---	5.08	18/04/2018	5.08	5.08	5.08	5.08	5.08	233999@5.08	3429@5.10	---	---	2,359	38	11,983.72	69,019.42	4.9	5.1	3767
29,480,000	0.420	---	---	---	19/07/2010	01/08/2007	---	KRETA FARM SA (CR)	0.74	-4.64	0.776	18/04/2018	0.774	0.74	0.774	0.74	0.759	530@0.736	50@0.740	---	---	3,560	19	2,703.39	21,815.20	0.562	0.84	3577
33,065,136	0.380	0.06	0.09	---	17/08/2017	16/09/2013	---	KRI-KRI S.A. (CR)	3.93	---	3.93	18/04/2018	3.89	3.89	3.93	3.93	3.919	200@3.83	616@3.93	17.71	2017	1,511	8	5,921.53	129,945.98	3	3.98	3577
7,595,160	0.600	---	---	---	08/08/2008	18/08/2010	---	KIRIAKOULIS SHIPPING SA (CR)	0.86	9.55 #	0.785	18/04/2018	0.86	0.86	0.86	0.86	0.86	200@0.755	300@0.855	---	---	20	1	17.20	6,531.84	0.62	1.4	5759
2,160,524	0.670	0.0436	0.0436	---	07/08/2017	23/11/1999	---	N. LEVEDERIS SA (PB)	0.24	---	0.24	18/04/2018	---	---	---	---	---	2000@0.240	1500@0.300	---	2016	---	---	---	2,149.58	0.182	0.3	1757
17,120,280	0.940	---	---	---	01/06/2010	07/07/2017	---	LOULIS MILLS SA (CR)	2.18	1.87 #	2.14	18/04/2018	2.18	2.18	2.2	2.2	2.188	150@2.16	811@2.20	---	---	2,500	4	5,470.00	37,322.21	2	2.56	3577
9,819,370	0.690	---	---	---	14/08/2007	09/01/2004	---	MATHIOS REFRACTORY SA (CR)	0.362	---	0.362	18/04/2018	---	---	---	---	---	---	400@0.348	---	---	---	---	---	3,554.61	0.212	0.362	2353
11,700,000	0.400	---	---	---	02/06/2009	02/06/2017	---	MOTODYNAMICS S.A. (CR)	0.8	---	0.8	18/04/2018	---	---	---	---	---	200@0.815	494@0.850	---	---	---	---	---	9,360.00	0.61	1	5379
32,188,050	1.04	---	---	---	21/07/2008	20/01/2000	---	EL. D. MOUZAKIS SA (CB)	0.398	6.99 #	0.372	18/04/2018	0.38	0.372	0.4	0.398	0.387	990@0.372	1585@0.398	---	---	15,035	20	5,815.83	12,810.84	0.324	0.446	3763
294,016,812	0.300	---	---	---	08/07/2008	21/03/2016	---	NIREFS SA (CR)	0.2795	-0.89	0.282	18/04/2018	0.2765	0.274	0.2805	0.2795	0.277	4125@0.274	4320@0.280	---	---	129,081	88	35,743.54	82,177.70	0.261	0.337	3573
10,080,000	3.00	0.58	0.49	---	31/07/2017	27/08/2001	---	TPA SA (CR)	27.9	---	27.9	18/04/2018	27.9	27.9	28	27.9	27.979	95@27.90	397@28.00	19.97	2016	1,445	10	40,429.10	281,232.00	24.9	31.4	2777
4,971,466	1.46	---	---	---	04/07/2007	08/10/2003	---	PAIRIS SA (CR)	0.284	9.23 #	0.26	18/04/2018	0.29	0.28	0.29	0.28	0.284	2000@0.260	125@0.280	---	---	3,800	6	1,080.00	1,411.90	0.188	0.446	2723
50,797,369	0.310	---	---	---	17/08/2000	12/10/2010	---	PAPOUTSANIS (CR)	0.442	2.79 #	0.43	18/04/2018	0.436	0.43	0.448	0.442	0.44	251@0.437	989@0.441	53.41	2017	46,466	48	20,465.02	22,452.44	0.252	0.452	3767
17,240,776	0.370	---	---	---	14/07/2005	30/09/2003	---	PERSEUS SA (CR)	0.81	0.62 #	0.805	18/04/2018	0.805	0.8	0.845	0.81	0.821	645@0.810	498@0.825	7.56	2017	21,108	52	17,337.54	13,965.03	0.33	1.14	3577
7,070,400	0.930	---	---	---	30/11/2016	06/05/2016	---	PETROPOULOS PETROS (CR)	6.46	0.31 #	6.44	18/04/2018	6.36	6.36	6.46	6.46	6.44	350@6.40	240@6.48	---	---	265	4	1,706.60	45,674.78	5.02	6.46	2753
22,075,665	0.330	0.08	0.05	---	30/05/2017	27/04/2015	---	PLAISIO COMPUTERS SA (CR)	4.52	2.73 #	4.4	18/04/2018	4.44	4.43	4.52	4.52	4.485	100@4.47	549@4.52	---	---	7,121	57	31,940.06	99,782.01	4.14	4.74	9572
43,741,452	0.660	---	---	---	20/04/2015	01/11/1999	---	THRACE PLASTICS SA (CR)	2.5	---	2.5	18/04/2018	2.5	2.48	2.52	2.5	2.502	110@2.49	558@2.50	---	---	12,883	110	32,235.20	109,353.63	2.35	2.98	1357
22,280,000	0.300	---	---	---	11/04/2011	23/02/2007	---	REVOIL (CR)	0.55	---	0.55	18/04/2018	---	---	---	---	---	600@0.505	500@0.600	---	---	---	---	---	12,254.00	0.5	0.69	5379
245,497,164	0.300	---	---	---	01/07/2008	30/07/2012	---	SELONDA AQUACULTURE SA (CR)	0.1835	0.27 #	0.183	18/04/2018	0.18	0.177	0.184	0.184	0.18	1000@0.177	110@0.185	---	---	31,272	29	5,632.04	45,048.73	0.177	0.25	3573
28,438,268	0.300	---	---	---	21/08/2006	24/11/1999	---	SPIROY AGRICULTURE SA (CR)	0.31	9.93 #	0.282	18/04/2018	0.29	0.262	0.318	0.31	0.289	1000@0.266	99@0.310	---	---	17,998	24	5,196.45	8,815.86	0.21	0.384	1357
40,693,350	5.00	---	---	---	03/07/2006	26/05/2015	---	TECHNICAL OLYMPIC SA (CR)	2.05	---	2.05	18/04/2018	2.01	2	2.07	2.05	2.018	849@2.01	384@2.04	---	---	16,168	80	32,629.26	83,421.37	1.56	2.57	3728
7,568,960	3.00	0.3099	0.1049	---	13/06/2017	13/06/2017	---	TITAN CEMENT CO. (PR)	17	-0.29	17.05	18/04/2018	17.05	16.9	17.1	17	17.054	50@16.95	60@17.00	---	---	1,460	21	24,899.25	1,820,217.64	15.7	18.4	2353
245,000	1.00	---	---	---	19/07/2010	11/12/2012	---	TRIA ALFA SA (PR)	0.66	---	0.66	18/04/2018	---	---	---	---	---	2839@0.660	---	---	2016	---	---	---	1,693.70	0.6	0.66	3763
305,732,436	0.410	---	---	---	08/07/2009	28/09/2011	---	HYGEIA SA (CR)	0.929	-2.11	0.949	18/04/2018	0.952	0.929	0.958	0.929	0.944	610@0.926	3000@0.930	---	---	159,035	120	150,164.22	284,025.43	0.558	0.988	4533
10,203,575	0.730	---	---	---	16/07/2007	18/10/1999	---	FIERATEX SA (CR)	0.204	3.55 #	0.197	18/04/2018	0.17	0.17	0.204	0.204	0.2	17@0.172	490@0.204	---	2016	1,363	10	272.19	2,081.53	0.128	0.236	3763

Main Market - Low Liquidity Class

14,000,000	4.15	---	---	---	23/04/2010	29/06/1999	---	ALPHA REAL ESTATE SA(CR)	6.4	---	6.4	18/04/2018	6.55	6.4	6.55	6.4	6.45	150@6.30	298@6.35	---	---	3	2	19.35	89,600.00	6	7.25	8637
51,119,369	0.700	---	---	---	01/07/2008	01/03/2010	---	AUDIO VISUAL ENTERPRISES (CR)	0.134	-2.19	0.137	18/04/2018	0.14	0.124	0.143	0.134	0.128	---	699@0.134	---	---	14,739	31	1,892.54	6,850.00	0.095	0.169	5553
52,800,154	0.300	---	---	---	20/08/2014	21/06/2004	---	F.G. EUROPE S.A. (CR)	0.63	---	0.63	18/04/2018	0.57	0.57	0.6	0.6	0.589	100@0.590	7@0.600	---	---	327	6	192.51	33,264.10	0.412	0.77	3722
11,720,024	0.540	---	---	---	21/08/2014	04/11/2015	---	FLEXOPACK SA (CR)	6.3	-3.82	6.55	18/04/2018	6.6	6.3	6.6	6.3	6.359	60@6.00	73@6.55	---	---	699	6	4,445.20	73,836.15	5.35	6.9	2723
10,500,000	4.00	---	0.28	---	18/05/2017	02/08/2016	---	INTERCONTINENTAL (CR)	5.2	---	5.2	18/04/2018	5.2	5.15	5.35	5.2	5.215	1760@5.20	200@5.25	8.73	2016	5,273	19	27,500.95	54,600.00	4.84	6.1	8674
4,740,000	0.860	---	---	---	14/03/2003	---	---	LOGISMOS S.A. (CR)	0.36	---	0.36	18/04/2018	---	---	---	---	---	1900@0.350	99@0.370	-(6)-	2016	---	---	---	1,706.40	0.318	0.414	9533
22,996,875	1.25	---	---	---	24/06/2011	02/02/2016	---	NEXANS HELLAS SA (CR)	1.52	-6.17	1.62	18/04/2018	1.52	1.52	1.56	1.52	1.52	1500@1.50	100@1.52	22.85	2016	6,205	10	9,431.80	34,955.25	1.15	1.82	2733
80,690,653	0.500	---	---	---	25/04/2014	22/12/2016	---	TRASTOR REAL EST. INV. CO.(CR)	0.8	0.63	# 0.795	18/04/2018	0.825	0.8	0.825	0.8	0.801	1000@0.795	1000@0.810	-(6)-	2017	2,050	5	1,641.25	64,552.52	0.75	0.9	8671

Number of Outstanding Securities	Nominal Value	Dividends [1]			Date of Last Coupon		Note	Shares	Closing price	% change	Previous closing price/date	Open price	Price min	Price max	Last price	Avg price	Last Bid [7]	Last Ask [7]	P/E after	Year	Volume	Trades	Transactions Value[8]	Company Mkt Value (thou. €)	Year low	Year high	Sector[ 4]		
		2015	2016	2017	Dividend [2]	Right																							
113,465,290	0.300	---	---	---	09/08/2004	09/11/2016	---	ATHENA SA (CR)	0.7	---	↘	0.7	18/04/2018	---	---	---	---	---	10061@0.700	---	---	---	---	---	79,425.70	0.68	0.77	2357	
15,300,000	0.300	---	---	---	30/07/2009	13/12/1999	---	ATTICA PUBLICATIONS SA (CR)	0.5	---	↘	0.5	18/04/2018	---	---	---	---	342@0.462	408@0.515	---	---	---	---	---	7,650.00	0.45	0.58	5557	
18,810,000	0.400	---	---	---	08/07/2010	14/11/2007	---	VARVERIS - MODA BAGNO SA (CR)	0.49	---	↘	0.49	18/04/2018	---	---	---	---	---	2275@0.442	---	---	---	---	---	9,216.90	0.442	0.49	2353	
4,968,600	2.88	---	---	---	01/07/1998	14/12/1998	---	VIS SA (CR)	0.8	---	↘	0.8	18/04/2018	---	---	---	---	260@0.790	120@0.860	---	2017	---	---	---	3,974.88	0.725	1.03	2723	
6,325,000	0.600	---	0.11	---	04/07/2017	17/02/2014	---	VOGIATZOGLOU SYSTEMS SA (CR)	1.8	---	↘	1.8	18/04/2018	---	---	---	---	200@1.62	2000@1.98	---	---	---	---	---	11,385.00	1.36	2	2797	
8,418,750	0.300	0.12	0.3	---	06/06/2017	27/06/2012	---	GEKE SA (CB)	5	---	↘	5	18/04/2018	---	---	---	---	250@4.82	13@5.10	23.28	2016	---	---	---	42,093.75	4.38	5.15	5753	
15,000,000	0.300	---	---	---	06/07/2007	18/07/2000	---	DAIOS PLASTICS SA (CR)	2.8	---	↘	2.8	18/04/2018	---	---	---	---	750@2.66	---	---	---	---	---	---	42,000.00	2.64	2.88	1357	
255,494,534	3.00	0.2035	0.2	0.09	21/12/2017	23/12/2015	---	NBG PANGAEA (CR)	4.78	---	↘	4.78	18/04/2018	4.9	4.72	4.9	4.72	4.858	46@4.72	272@5.00	---	---	216	3	1,049.40	1,221,263.87	4.42	5.25	8671
3,307,500	0.710	---	---	---	11/08/2010	15/12/2017	---	ELVE SA (CR)	2.94	---	↘	2.94	18/04/2018	---	---	---	---	99@2.72	135@2.94	---	---	---	---	---	9,724.05	2.48	2.94	3763	
31,734,530	1.60	---	---	---	09/07/2007	19/07/2006	---	ELGEKA SA (CR)	0.216	---	↘	0.216	18/04/2018	0.22	0.22	0.22	0.22	400@0.196	350@0.220	---	---	150	1	33.00	6,854.66	0.152	0.264	3577	
23,828,130	0.500	0.16	0.052	---	29/06/2017	17/02/2009	---	ELINOIL S.A. (CR)	1.75	---	↘	1.75	18/04/2018	---	---	---	---	65@1.63	50@1.75	---	---	---	---	---	41,699.23	1.37	1.95	537	
14,050,971	0.340	---	---	---	13/12/2017	21/02/2018	---	ELTRAK SA (CR)	3.36	3.70	#	3.24	18/04/2018	3.28	3.26	3.36	3.36	3.317	500@3.28	300@3.38	---	---	2,353	11	7,804.08	47,211.26	3	3.82	2753
11,125,110	0.300	---	---	---	02/06/2010	06/11/2017	---	EUROCONSULTANTS S.A. (CR)	0.326	-8.94	€	0.358	18/04/2018	0.324	0.324	0.326	0.326	0.325	---	4650@0.326	---	---	1,400	9	455.30	3,626.79	0.324	0.535	2791
86,735,980	0.310	---	---	---	06/07/2009	02/01/2002	---	ATHENS MEDICAL CENTER SA (CR)	1.49	-1.32	€	1.51	18/04/2018	1.52	1.49	1.52	1.49	1.513	100@1.48	400@1.53	---	---	5,200	5	7,868.00	129,236.61	1.26	1.62	4533
8,298,467	0.400	---	---	---	30/08/1993	08/05/2013	---	IDEAL GROUP SA (CR)	0.76	---	↘	0.76	18/04/2018	0.775	0.775	0.775	0.775	1368@0.775	10@0.810	---	---	54	4	41.85	6,306.83	0.675	0.88	9574	
2,566,836	0.440	---	---	---	13/08/2010	09/01/2007	---	INTERWOOD-XYLEMPORIA (PR)	0.06	---	↘	0.06	18/04/2018	---	---	---	---	30742@0.066	---	---	---	---	---	---	3,302.79	0.06	0.066	2353	
34,986,430	0.440	---	---	---	25/07/2008	23/02/2010	---	INTERWOOD-XYLEMPORIA (CR)	0.09	-1.10	€	0.091	18/04/2018	0.091	0.09	0.091	0.09	0.09	5000@0.090	10000@0.099	---	---	10,000	3	902.00	3,302.79	0.09	0.148	2353
9,742,920	0.400	0.01	---	---	12/08/2016	14/07/2000	---	KARAMOLEGOS SA (CR)	1.82	---	↘	1.82	18/04/2018	---	---	---	---	---	---	---	---	---	---	---	17,732.11	1.65	2.46	3577	
2,760,000	11.83	8.5	9.2	---	24/07/2017	16/07/1990	---	KARELIA TOBACCO CO. SA (CB)	284	---	↘	284	18/04/2018	---	---	---	---	2@280.00	7@286.00	---	---	---	---	---	783,840.00	268	306	3785	
6,700,000	0.800	0.023	0.028	---	29/06/2017	29/05/2014	---	MILLS KEPENOS (CR)	1.72	---	↘	1.72	18/04/2018	1.76	1.76	1.76	1.76	999@1.76	91@1.89	5.98	2016	1	1	1.76	11,524.00	1.72	2	3577	
18,017,472	0.360	---	---	---	15/06/2010	28/08/2017	---	KTIMA KOSTAS LAZARIDIS SA (CR)	0.6	---	↘	0.6	18/04/2018	0.66	0.66	0.66	0.66	100@0.590	4800@0.660	---	---	207	1	136.62	10,810.48	0.5	0.68	3535	
21,364,000	1.12	---	---	---	05/07/2010	10/08/2005	---	LAMPSPA HOTEL SA (CR)	16.6	---	↘	16.6	18/04/2018	---	---	---	---	300@16.70	100@17.00	---	---	---	---	---	354,642.40	16.5	17.6	5753	
5,939,268	0.620	---	---	---	10/07/2003	03/01/2002	---	LANAKAM SA (CR)	0.396	---	↘	0.396	18/04/2018	---	---	---	---	---	56@0.358	---	2016	---	---	---	2,351.95	0.228	0.57	3763	
8,321,682	0.670	---	---	---	17/08/2007	23/11/1999	---	N. LEVEDERIS SA (CB)	0.196	---	↘	0.196	18/04/2018	0.208	0.208	0.208	0.208	0.208	---	346@0.206	---	2016	300	1	62.40	2,149.58	0.161	0.208	1757
106,980,050	2.25	---	---	---	25/07/2008	24/02/2014	---	MINOAN LINES SA (CR)	2.4	---	↘	2.4	18/04/2018	2.34	2.34	2.4	2.4	2.372	3775@2.34	14829@2.40	---	---	2,823	19	6,695.64	256,752.12	2.24	2.44	5759
6,340,000	0.600	---	---	---	30/11/2009	06/11/2017	---	NAKAS MUSIC	1.58	---	↘	1.58	18/04/2018	1.58	1.58	1.58	1.58	100@1.59	5000@1.73	13.32	2017	10	1	15.80	10,017.20	1.3	1.75	5379	
3,873,120	0.300	---	---	---	07/07/2008	04/10/2012	---	DRUCKFARBEN HELLAS (CR)	1.28	---	↘	1.28	18/04/2018	---	---	---	---	---	500@1.40	---	---	---	---	---	4,957.59	0.92	1.4	1357	
27,379,200	0.410	(0.1808)	---	---	19/08/2016	08/01/2018	---	CRETE PLASTICS SA (CR)	13.6	-2.16	€	13.9	18/04/2018	13.9	13.6	14.1	13.6	13.625	346@13.60	996@14.00	---	---	475	10	6,471.90	372,357.12	9.05	14.8	1357
4,181,450	0.500	---	---	---	21/08/2000	05/03/2002	---	FLOUR MILLS SARANTOPOULOS SA	0.62	-7.46	€	0.67	18/04/2018	0.62	0.62	0.62	0.62	10@0.620	---	---	---	---	790	2	489.80	2,592.50	0.53	0.675	3577
766,000	1.00	---	---	---	01/07/2004	11/12/2012	---	TRIA ALFA SA (CR)	2	---	↘	2	18/04/2018	---	---	---	---	---	200@2.20	---	2016	---	---	---	1,693.70	1.71	2.48	3763	
8,340,750	1.18	---	---	---	25/06/2009	09/09/2015	---	HAIDEMENOS SA (CR)	0.48	-4.00	€	0.5	18/04/2018	0.48	0.48	0.48	0.48	0.48	---	2200@0.480	---	2016	800	3	384.00	4,003.56	0.312	0.51	2791

Exchange Traded Funds (ETFs)

629,082	---	---	---	---	15/06/2016	---	ALPHA ETF FTSE Athex Large Cap	21.9	---	↘	21.9	18/04/2018	---	---	---	---	---	---	---	---	---	---	---	---	---	20.07	22.9	12003
---------	-----	-----	-----	-----	------------	-----	--------------------------------	------	-----	---	------	------------	-----	-----	-----	-----	-----	-----	-----	-----	-----	-----	-----	-----	-----	-------	------	-------

Surveillance

5,867,311	0.300	---	---	---	11/08/2010	28/04/2017	5123	DIONIC (CR)	0.515	19.21	#	0.432	18/04/2018	0.515	0.515	0.515	0.515	0.515	---	817@0.515	---	---	50	1	25.75	3,021.67	0.19	0.55	2797
21,820,410	0.800	---	---	---	22/05/2008	02/08/2011	4882	EUROMEDICA SA (CR)	0.38	17.28	#	0.324	18/04/2018	0.386	0.26	0.386	0.38	0.381	1911@0.260	8000@0.378	---	---	13,103	8	4,986.52	8,291.76	0.0825	0.386	4533
163,815,807	0.300	---	---	---	---	19/09/2016	5161	Forthnet (CR)	0.4	1.52	#	0.394	18/04/2018	0.318	0.318	0.4	0.4	0.4	1558@0.318	250@0.398	---	---	1,002	3	400.64	65,526.32	0.3	0.446	9535
355,437,751	0.360	---	---	---	07/07/2010	21/09/2017	5160	FRIGOGLASS SA (CR)	0.165	-0.60	€	0.166	18/04/2018	0.163	0.163	0.18	0.18	0.165	743@0.177	58553@0.180	---	2016	774,062	61	128,010.81	58,647.23	0.158	0.266	2757

Number of Outstanding Securities	Nominal Value	Dividends [1]			Date of Last Coupon Dividend [2]		Note	Shares	Closing price	% change	Previous closing price/date	Open price	Price min	Price max	Last price	Avg price	Last Bid [7]	Last Ask [7]	P/E after	Year	Volume	Trades	Transactions Value[8]	Company Mkt Value (thou. €)	Year low	Year high	Sector[ 4]
51,081,030	1.00	---	---	---	20/08/2007	03/09/2007	4912	LAVIPHARM SA (CR)	0.17	-6.08 <b>€</b>	0.181 18/04/2018	0.17	0.17	0.17	0.17	0.17	500@0.165	2901@0.170	---	---	4,059	10	690.03	8,683.78	0.131	0.25	4577
4,419,616	1.58	---	---	---	21/07/2011	04/03/2015	4983	MEDICON S.A (CR)	0.99	11.24 <b>#</b>	0.89 18/04/2018	0.99	0.99	0.99	0.99	0.99	832@0.880	1099@0.990	---	---	5	2	4.95	4,375.42	0.66	1.23	4535
14,967,940	0.500	---	---	---	21/05/2008	04/01/2008	4956	PASAL DEVELOPMENT S.A. (CR)	0.082	--- <b>↘</b>	0.082 18/04/2018	0.082	0.082	0.082	0.082	0.082	9711@0.082	500@0.094	---	---	51,339	16	4,209.80	1,227.37	0.06	0.142	8633
65,326,268	0.530	---	---	---	04/07/2007	19/07/2006	4750	SATO SA (CR)	0.082	--- <b>↘</b>	0.082 18/04/2018	---	---	---	---	---	---	354@0.080	---	---	---	---	---	5,356.75	0.03	0.082	3726
13,191,620	0.620	---	---	---	04/08/2010	09/09/2002	4977	YALCO - CONSTANTINOU SA (CB)	0.178	--- <b>↘</b>	0.178 18/04/2018	---	---	---	---	---	---	1499@0.170	---	---	---	---	---	2,348.11	0.0565	0.181	3722
33,301,715	0.320	---	---	---	27/06/2003	08/07/2009	5159	AEGEK (CR)	0.05	-2.91 <b>€</b>	0.052 18/04/2018	0.0505	0.05	0.0505	0.05	0.05	210@0.050	500@0.057	---	---	20,212	12	1,010.71	1,665.09	0.028	0.09	2357
13,000,000	1.00	---	---	---	01/08/2007	07/04/2000	5093	AKRITAS SA (CR)	0.184	2.22 <b>#</b>	0.18 18/04/2018	0.18	0.18	0.185	0.185	0.184	50@0.185	---	---	---	40	4	7.35	2,392.00	0.12	0.21	2353
185,373,016	0.300	---	---	---	02/07/2008	28/02/2011	4957	ANEK LINES SA (CR)	0.09	--- <b>↘</b>	0.09 18/04/2018	0.09	0.09	0.09	0.09	0.09	3000@0.083	3543@0.090	---	---	5,000	2	450.00	16,974.88	0.063	0.1	5759
312,163	0.300	---	---	---	02/07/2008	28/02/2011	4959	ANEK LINES SA (PR, issue '90)	0.0865	--- <b>↘</b>	0.087 18/04/2018	---	---	---	---	---	2000@0.078	---	---	---	---	---	---	16,974.88	0.075	0.092	5759
2,969,713	0.300	---	---	---	02/07/2008	28/02/2011	4958	ANEK LINES SA (PR, issue '96)	0.089	--- <b>↘</b>	0.089 18/04/2018	---	---	---	---	---	200@0.100	---	---	---	---	---	---	16,974.88	0.073	0.105	5759
4,737,503	0.320	---	---	---	22/06/2005	22/09/2015	5115	VARANGIS AVEPE S.A. (CR)	0.0445	--- <b>↘</b>	0.045 18/04/2018	---	---	---	---	---	---	50@0.036	---	---	---	---	---	210.82	0.0445	0.17	3726
16,383,428	0.300	---	---	---	25/06/2002	21/06/2013	5162	VARVARESSOS SA (CB)	0.054	--- <b>↘</b>	0.054 18/04/2018	0.054	0.054	0.054	0.054	0.054	6913@0.054	---	---	2016	650	1	35.10	884.71	0.045	0.108	3763
17,579,754	4.16	---	---	---	18/08/2006	02/08/2010	5156	BIOTER SA (CR)	0.104	-18.75 <b>€</b>	0.128 18/04/2018	0.103	0.103	0.104	0.104	0.104	1000@0.106	1000@0.119	---	---	5,967	6	620.47	1,828.29	0.05	0.128	2357
77,126,446	0.340	---	---	---	23/05/2005	18/08/2011	5094	G.E. DIMITRIOU (CR)	0.024	6.67 <b>#</b>	0.023 18/04/2018	0.0225	0.0225	0.025	0.025	0.024	5000@0.022	3985@0.025	---	---	2,500	5	60.00	1,851.03	0.0115	0.03	3722
6,000,000	0.600	---	---	---	13/06/2008	08/04/2004	5152	EUROBROKERS S.A. (CR)	0.008	--- <b>↘</b>	0.008 18/04/2018	---	---	---	---	---	6000@0.010	---	---	2016	---	---	---	48.00	0.007	0.008	8534
15,878,748	0.480	---	---	---	10/07/2006	22/03/2004	5095	DOMKI KRITIS SA (CR)	0.172	--- <b>↘</b>	0.172 18/04/2018	0.172	0.172	0.172	0.172	0.172	50@0.138	1000@0.206	---	---	15	1	2.58	2,731.14	0.099	0.183	2357
3,961,300	1.28	---	---	---	29/06/2004	03/08/2000	5080	DUROS SA (CR)	0.244	1.67 <b>#</b>	0.24 18/04/2018	0.24	0.24	0.25	0.25	0.244	---	1799@0.250	---	2016	400	3	97.50	966.56	0.12	0.26	3763
7,085,888	1.59	---	---	---	02/07/1996	06/09/2010	4690	ELVIEMEK (CR)	4.7	--- <b>↘</b>	4.7 18/04/2018	---	---	---	---	---	---	---	---	---	---	---	---	33,303.67	4.7	4.7	8633
7,125,216	0.650	---	---	---	01/07/2005	14/12/1999	4955	KRE.KA SA (CR)	0.12	--- <b>↘</b>	0.12 18/04/2018	0.12	0.12	0.12	0.12	0.12	300@0.120	101@0.144	---	2016	30	1	3.60	855.03	0.107	0.338	3573
7,734,375	1.00	---	---	---	09/07/2007	07/01/2011	5112	LIVANIS SA (CR)	0.0675	--- <b>↘</b>	0.068 18/04/2018	---	---	---	---	---	269@0.055	200@0.079	---	---	---	---	---	522.07	0.0235	0.122	5557
15,842,391	1.51	---	---	---	15/07/2009	12/05/2000	5141	BITROS HOLDING SA (CR)	0.15	6.38 <b>#</b>	0.141 18/04/2018	0.15	0.15	0.15	0.15	0.15	3000@0.125	200@0.148	---	---	500	2	75.00	2,376.36	0.141	0.224	1757
25,179,640	0.600	---	---	---	08/08/1994	19/09/2000	5057	J.BOUTARIS & SON HOLD. SA (CB)	0.0465	-2.11 <b>€</b>	0.048 18/04/2018	0.04	0.04	0.047	0.047	0.047	2941@0.047	5270@0.048	---	---	4,309	6	201.05	1,295.59	0.0340	0.0515	3535
1,540,000	0.600	---	---	---	08/08/1994	19/09/2000	5058	J.BOUTARIS & SON HOLD. (PB)	0.081	--- <b>↘</b>	0.081 18/04/2018	---	---	---	---	---	---	6000@0.097	---	---	---	---	---	1,295.59	0.0675	0.084	3535
79,596,820	0.300	---	---	---	15/07/2008	27/04/2017	5163	NIKAS SA (CR)	0.4	--- <b>↘</b>	0.4 18/04/2018	---	---	---	---	---	---	---	---	---	---	---	---	31,838.73	0.4	0.5	3577
24,319,250	0.300	---	---	---	09/07/2002	04/07/2007	5165	PROODEFTIKH SA (CR)	0.072	--- <b>↘</b>	0.072 18/04/2018	---	---	---	---	---	400@0.060	3701@0.070	---	---	---	---	---	1,750.99	0.0475	0.104	2357
10,186,667	1.35	---	---	---	24/06/2008	02/02/2016	4887	SIDMA SA (CR)	0.38	--- <b>↘</b>	0.38 18/04/2018	---	---	---	---	---	910@0.304	1000@0.400	---	---	---	---	---	3,870.93	0.276	0.46	1757
7,914,480	0.300	---	---	---	23/06/2008	29/06/2011	4888	SFAKIANAKIS SA (CR)	0.54	--- <b>↘</b>	0.54 18/04/2018	---	---	---	---	---	55@0.520	300@0.645	---	---	---	---	---	4,273.82	0.4	0.76	5379
1,270,000	0.300	---	---	---	06/07/2007	06/02/2013	5007	GIRAKIAN PROFIL SA (CB)	1.65	--- <b>↘</b>	1.65 18/04/2018	1.65	1.65	1.65	1.65	1.65	100@1.36	250@1.65	---	2016	300	3	495.00	2,095.50	0.044	1.95	1757
4,034,950	0.680	---	---	---	01/07/2005	30/12/2010	5114	CHATZIKRANIOTIS & SONS SA (CR)	0.16	--- <b>↘</b>	0.16 18/04/2018	---	---	---	---	---	899@0.140	1000@0.168	---	2016	---	---	---	645.59	0.102	0.18	3577

Suspension Status

215,246,452	0.300	---	---	---	25/06/2001	24/09/2001	5164	ALTEC SA (CR)	0.012	--- <b>↘</b>	0.012 30/11/2015	---	---	---	---	---	---	---	---	---	---	---	---	2,582.96	0.012	0.012	9533
20,255,805	0.300	---	---	---	22/08/2006	02/08/2010	5136	AXON HOLDING SA (CR)	0.058	--- <b>↘</b>	0.058 28/04/2017	---	---	---	---	---	---	---	---	---	---	---	---	1,174.84	0.058	0.058	4533
5,000,000	0.400	---	---	---	03/06/2009	01/09/2014	5087	ALCO HELLAS SA (CR)	0.18	--- <b>↘</b>	0.18 31/03/2015	---	---	---	---	---	---	---	---	---	---	---	---	900.00	0.18	0.18	1753
14,870,100	0.300	---	---	---	15/05/2008	26/09/2011	5130	ALPHA GRISSIN S.A. (CR)	0.014	--- <b>↘</b>	0.014 13/04/2017	---	---	---	---	---	---	---	---	---	---	---	---	208.18	0.014	0.014	9533
81,644,555	0.300	---	---	---	01/07/2008	02/09/2002	5098	ATTI - KAT SA (CR)	0.012	--- <b>↘</b>	0.012 29/05/2015	---	---	---	---	---	---	---	---	---	---	---	---	979.73	0.012	0.012	2357
20,121,710	1.21	---	---	---	27/07/1992	12/03/2003	5002	BALKAN R.E. (CR)	0.19	--- <b>↘</b>	0.19 29/08/2013	---	---	---	---	---	---	---	---	---	---	---	---	3,823.12	0.19	0.19	8633
33,930,000	0.300	---	---	---	03/07/2006	30/05/2001	4865	BABIS VOVOS SA (CR)	0.304	--- <b>↘</b>	0.304 30/03/2012	---	---	---	---	---	---	---	---	---	---	---	---	10,314.72	0.304	0.304	8633
7,847,611	1.20	---	---	---	01/08/2007	28/09/2011	4939	EDRASIS - C. PSALLIDAS SA (CR)	0.15	--- <b>↘</b>	0.15 29/11/2012	---	---	---	---	---	---	---	---	---	---	---	---	1,177.14	0.15	0.15	2357
36,748,909	0.730	---	---	---	15/12/2005	13/12/2006	5109	HEL. SUGAR INDUSTRY SA (CB)	0.075	--- <b>↘</b>	0.075 29/02/2016	---	---	---	---	---	---	---	---	---	---	---	---	2,756.17	0.075	0.075	3577

## Daily Official List

Year: 139 Trading Day No: 73

## Section 2: Analytic Figures of Shares Transactions

Thursday, 19 April, 2018

Number of Outstanding Securities	Nominal Value	Dividends [1]			Date of Last Coupon		Note	Shares	Closing price	% change	Previous closing price/date		Open price	Price min	Price max	Last price	Avg price	Last Bid [7]	Last Ask [7]	P/E after	Year	Volume	Trades	Transactions Value[8]	Company Mkt Value (thou. €)	Year low	Year high	Sector[ 4]
30,390,000	0.310	---	---	---	18/08/2008	29/12/2006	5099	HELLENIC FISHFARMING SA (CR)	0.07	---	0.07	02/06/2015	---	---	---	---	---	---	---	---	---	---	---	---	2,127.30	0.07	0.07	3573
24,619,524	0.500	---	---	---	10/10/1986	30/12/2002	4914	KERAMIA-ALLATINI (CR)	0.088	---	0.088	30/08/2012	---	---	---	---	---	---	---	---	---	---	---	---	2,166.52	0.088	0.088	8633
66,937,526	0.700	---	---	---	13/08/2010	21/05/2003	5003	MICHANIKI SA (CR)	0.1	---	0.1	29/08/2013	---	---	---	---	---	---	---	---	---	---	---	---	9,186.78	0.1	0.1	2357
25,968,987	0.700	---	---	---	13/08/2010	21/05/2003	5004	MICHANIKI SA (PR)	0.096	---	0.096	29/08/2013	---	---	---	---	---	---	---	---	---	---	---	---	9,186.78	0.096	0.096	2357
23,935,280	0.300	---	---	---	29/06/2009	13/06/2000	5153	NAYTEMPORIKI PUBLISHING SA(CR)	0.107	---	0.107	02/10/2017	---	---	---	---	---	---	---	---	---	---	---	---	2,561.07	0.107	0.107	5557
255,459,600	0.300	---	---	---	26/06/2000	03/12/2010	5101	NEL SA (CR)	0.07	---	0.07	31/08/2015	---	---	---	---	---	---	---	---	---	---	---	---	17,882.17	0.07	0.07	5759
23,463,874	0.800	---	---	---	23/05/2003	21/12/1999	4918	NEORION SA (CR)	0.125	---	0.125	30/08/2012	---	---	---	---	---	---	---	---	---	---	---	---	2,932.98	0.125	0.125	2753
18,750,000	0.300	---	---	---	02/07/2001	31/12/2012	5154	PEGASUS PUBLISHING S.A. (CR)	0.089	---	0.089	02/10/2017	---	---	---	---	---	---	---	---	---	---	---	---	1,668.75	0.089	0.089	5557
144,688,060	0.600	---	---	---	21/04/2008	10/03/2010	4982	T BANK (CR)	0.048	---	0.052	# 29/11/2011	---	---	---	---	---	---	---	---	---	---	---	---	6,945.03	0.048	0.048	8355
284,465,964	3.70	---	---	---	20/06/2008	15/06/2009	4913	TT HELLENIC POSTBANK (CR)	0.168	---	0.239	# 29/08/2012	---	---	---	---	---	---	---	---	---	---	---	---	47,790.28	0.168	0.168	8355
13,920,000	0.320	---	---	---	19/11/2001	01/08/2000	4726	TEXAPRET SA (CR)	0.08	---	0.08	28/02/2011	---	---	---	---	---	---	---	---	---	---	---	---	1,113.60	0.08	0.08	3763
100,793,572	0.300	---	---	---	16/07/2009	11/02/2016	5110	TELETIPOS SA (CR)	0.06	---	0.06	07/03/2016	---	---	---	---	---	---	---	---	---	---	---	---	6,047.61	0.06	0.06	5553
510,840	1.00	---	---	---	15/07/2008	21/11/2013	5036	TROPEA HOLDING (CR)	2	---	0.02	# 30/03/2012	---	---	---	---	---	---	---	---	---	---	---	---	1,021.68	2	2	3722

## Shares' Notes

Code	Note text
( )	- Adjusted dividends.
*	- Last adjusted closing price.
[1]	- Net dividends.
[2]	- The "Date of Last Coupon" for New listings refers to the date company's stocks started to trade in Athex
[3]	- The Company Market Value is referred to the number of outstanding shares
[4]	- Sectors codification can be found in Appendix A
[5]	- The Market Value refers to the total number of shares listed (including their several classes) in the exchange by the company.
[6]	- P/E greater than 100
[7]	- Last view of the Order Book before the end of the trading session
[8]	- All Blocks Methods' Transactions Value are included.
4690	- Transfer to Surveillance category as of 4/4/2006.
4726	- Suspension of trading as of 1/3/2011.
4750	- Transfer to the "Under Surveillance Category" from 8/4/2011.
4865	- Suspension of trading as of 2/4/2012.
4882	- Transfer to the Surveillance Category as of 10/4/2012.
4887	- Transfer to the Surveillance Category as of 10/4/2012.
4888	- Transfer to the Surveillance Category as of 10/4/2012.
4912	- Transfer to the Surveillance Category as of 31/7/2012.
4913	- Suspension of trading as of 30/8/2012.
4914	- Suspension of trading as of 31/8/2012.
4918	- Suspension of trading as of 31/8/2012.
4939	- Suspension of trading as of 30/11/2012.
4955	- Transfer to the Surveillance Category as from 5/4/2013.
4956	- Transfer to the Surveillance Category as from 5/4/2013.
4957	- Transfer to the Surveillance Category as from 5/4/2013.
4958	- Transfer to the Surveillance Category as from 5/4/2013.
4959	- Transfer to the Surveillance Category as from 5/4/2013.
4977	- Transfer to the "Under Surveillance Category" from 11/6/2013.
4982	- Suspension of trading as of 30/11/2011.
4983	- Transfer to the Surveillance Category as of 5/4/2013.
5002	- Suspension of trading as of 30/08/2013.
5003	- Suspension of trading as of 30/08/2013.
5004	- Suspension of trading as of 30/08/2013.
5007	- Transfer to the Surveillance category, as of 11/09/2013.
5036	- The company's share is under suspension of trading as of 2/4/2012. During suspension, the company proceeded and concluded a share reverse split, according to which - after the conclusion of the corporate action - the total number of the company's shares, as well as, the last closing price of 30/03/2012 were adjusted.
5057	- Transfer to the Surveillance Category as of 29/05/2014.
5058	- Transfer to the Surveillance Category as of 29/05/2014.
5080	- Transfer to the Surveillance Category as of 05/12/2014.
5087	- Suspension of trading as of 1/4/2015.
5093	- Transfer to the Surveillance Category as of 8/4/2015.
5094	- Transfer to the Surveillance Category as of 8/4/2015.
5095	- Transfer to the Surveillance Category as from 9/4/2015.
5098	- Suspension of trading as of 2/6/2015.
5099	- Suspension of trading as of 3/6/2015.
5101	- Suspension of trading as of 1/9/2015.
5109	- Suspension of trading as of 01/03/2016.
5110	- Suspension of trading as of 08/03/2016.
5112	- Transfer to the Surveillance Category as of 15/04/2016.
5114	- Transfer to the Surveillance Category as of 15/04/2016.
5115	- Transfer to the Surveillance Category as of 15/04/2016.
5123	- Transfer to the Surveillance Category as of 01/04/2016.



---

Shares' Notes

---

Code	Note text
5130	- Suspension of trading as of 18/04/2017.
5136	- Suspension of trading as of 02/05/2017.
5141	- Transfer to the Surveillance Category as of 10/05/2017.
5152	- Transfer to the Surveillance Category as of 02/10/2017.
5153	- Suspension of trading as of 03/10/2017.
5154	- Suspension of trading as of 03/10/2017.
5156	- Transfer to the Surveillance Category as of 11/12/2017.
5159	- Transfer to the Surveillance Category as of 01/12/2017.
5160	- Transfer to the Surveillance Category as of 15/04/2016.
5161	- Transfer to the Surveillance Category as of 25/11/2011.
5162	- Transfer to the Under Supervision Category as of 21/12/2009.
5163	- Transfer to the Surveillance Category as of 10/4/2012.
5164	- Suspension of trading as of 01/12/2015.
5165	- Transfer to the Surveillance Category as of 15/02/2018.

## Securities Blocks Details

Securities	Block Volume	Price	Block Trade Value	Time of approval	Note
J & P - AVAX SA (CR)	3,000	0.820	2,460.00	10:57:44	18
ALPHA BANK (CR)	250,000	2.10	525,000.00	12:51:06	20
ALPHA BANK (CR)	200,000	2.10	420,000.00	13:02:12	20
ALPHA BANK (CR)	250,000	2.10	525,000.00	13:23:43	20
MYTILINEOS HOLDINGS (CR)	2,000	9.75	19,500.00	13:43:31	14
ALPHA BANK (CR)	200,000	2.10	420,000.00	13:53:03	20
FOLLI FOLLIE (CR)	37,874	16.96	642,343.04	14:18:54	20
ALPHA BANK (CR)	250,000	2.10	525,000.00	14:51:14	20
ALPHA BANK (CR)	150,000	2.10	315,000.00	15:39:14	20
NATIONAL BANK (CR)	2,000,000	0.314	628,800.00	16:01:17	20
OTE (CR)	50,000	11.76	588,000.00	16:48:19	20
OTE (CR)	100,000	11.80	1,180,000.00	17:11:53	20
NATIONAL BANK (CR)	66,047,962	0.318	20,976,832.73	17:13:23	20
OTE (CR)	50,000	11.80	590,000.00	17:17:37	20

## Blocks Notes

- 9 - Method 6-1 / Special Fees
- 10 - Method 6-1 / Special Fees, SDS
- 14 - Method 6-3 / Settlement, Incomplete Buy and Sell
- 18 - Method 6-2 / SPOT 1
- 19 - Method 6-2 / SPOT 2
- 20 - Method 6-1 and Method 6-1 Same Day Settlement
- 21 - Other Pre-agreed

Shares Rights Details

Occured date	Exercise from	Exercise until	Trading until	Rights	Price min	Price max	Closing price	Last Bid	Last Ask	Volume	Trades	Transactions Value
-----------------	------------------	-------------------	------------------	--------	--------------	--------------	------------------	----------	----------	--------	--------	-----------------------

No Rights Transactions.

Shares Forced Sales

Securities	Transaction s Volume	Number of Trades	Transactions Value	Note
No Forced Transactions.				

Forced Sales Notes

- 1 - Normal Forced Sale.
- 2 - Forced Sales of Fixed Registered Shares.
- 3 - Forced Sales of Remaining Stock Fractions.

**Forced Sales Registered Shares**

Securities	Start Date	End Date	Initial Volume	Remaining Volume	Date	Avg price (day)	Avg price (period)	Number of Trades	Transactions Volume	Transactions Value
------------	------------	----------	----------------	------------------	------	-----------------	--------------------	------------------	---------------------	--------------------

No Fixed Registered Shares Forced Sales.

**Forced Sales Notes**

According to Decision 1/380/04.05.2008 of the Hellenic Republic Capital Market Commission, the certificated registered shares that have not been deposited to the issuer for dematerialisation, will be auctioned in the Athens Exchange by the supervising issuer. Forced sales procedure is held according to Article 99A of the Athens Exchange Rulebook. The average price of the period is calculated by dividing the Total transactions value by the Total volume and includes all the transactions made until the current date.

## Exchange Traded Funds (ETFs) Characteristics

	Transactions Date (T)	Creation / Redemption	Units (T-1)	New Units (T-1)	Redemptio n Units (T-	Units (T) [1]	Fund Assets [2]	Net Unit Price	Dividen d per	Dividend Date
ALPHA ETF FTSE Athex Large Cap	19/04/2018	5,000	629,082	---	---	629,082	13,774,050.00	21.8955	0.37	30/06/2016

## ETFs Notes

[1] - Units (T) = Units (T-1) + New Units (T-1) - Redemption Units (T-1)

[2] - The Creation / Redemption Units of T-1 are included.

Convertible Corporate Bonds - Regulated Market

Num Listed Bonds	Nominal price	Issue price	Today's Rate	Exp. Date	Duration (years)	Note	Coupon		Trading	Corporate Bonds	Price min	Price max	Closing price	Previous closing price/date		Volume	Transactions Value	Last order		Date	ear min	Year max
							Common	Preferred										Price	Buy / Sell			
180,030,311	0.30	0.30	1.00	11/10/2025	9	---	7	---	1	FORTHNET S.A. (Convertible)	---	---	---	---	---	---	---	0.2900	B	23/03/2018	100.0000	100.0000
1,117,598	13.76	9.77	0.00	21/10/2025	18	---	26	---	1	NIREUS S.A. (Convertible)	---	---	---	95.0000	09/01/2018	---	---	70.0000	B	19/04/2018	80.0000	95.0000

Corporate Bonds Notes

Transactions Volume = (Pieces) \* (Nominal Price). Transactions Value = (Pieces) \* (Nominal Price) \* (price %) + (Accrued interest).  
The price of a Bond is stated as a percentage (%) of Bond's Nominal Price.  
Nominal Price in Euros (€), except if it is noted differently.

Non Convertible Corporate Bonds - Regulated Market

Num Listed Bonds	Nominal price	Issue price	Today's Rate	Exp. Date	Duration (years)	Note	Coupon		Trading	Corporate Bonds	Accrued Int.	Yield.T.Mat	Price min	Price max	Closing price	Previous closing price/date	Volume	Transactions Value	Last order		Date	ear min	Year max	
							Common	Preferred											Price	Buy / Sell				
300,000	1,000.00	1,000.00	3.10	27/06/2022	5	---	2	---	1	MYTILINEOS HOLDINGS S.A. (Non Convertible)	10.0750	2.7790	100.9500	101.0500	100.9500	101.0500	18/04/2018	120,000	122,409.00	100.9500	B	19/04/2018	100.0001	103.4800
40,000,000	1.00	1.00	5.00	04/10/2021	5	---	7	---	1	HOUSEMARKET S.A. (Non Convertible)	0.0026	3.5620	---	---	---	103.6220	18/04/2018	---	---	104.1490	B	19/04/2018	103.6216	105.1000
50,000	1,000.00	1,000.00	4.25	20/06/2022	5	---	2	---	1	SYSTEMS SUNLIGHT S.A. (Non Convertible)	14.6389	3.4750	102.0000	102.4000	102.4000	102.4000	18/04/2018	54,000	55,950.50	102.0000	B	19/04/2018	101.1778	103.2000
200,000	1,000.00	1,000.00	3.50	21/03/2022	5	---	3	---	1	O.P.A.P. S.A. (Non Convertible)	3.2083	2.7060	102.4800	102.4800	102.4800	102.3000	18/04/2018	58,000	59,624.48	102.3600	B	19/04/2018	102.1500	103.1500
60,000	1,000.00	1,000.00	3.85	21/07/2022	5	---	2	---	1	TERNA ENERGY FINANCE S.A. (Non Convertible)	9.7319	3.5020	---	---	---	100.9220	18/04/2018	---	---	100.5000	B	19/04/2018	99.3154	103.4900
120,000	1,000.00	1,000.00	3.95	04/04/2025	7	---	1	---	1	GEK TERNA S.A. (Non Convertible)	2.0847	3.7950	100.7000	100.9000	100.8275	100.6900	18/04/2018	285,000	287,952.45	100.8000	B	19/04/2018	100.0000	102.9900

Corporate Bonds Notes

Transactions Volume = (Pieces) \* (Nominal Price). Transactions Value = (Pieces) \* (Nominal Price) \* (price %) + (Accrued interest).  
The price of a Bond is stated as a percentage (%) of Bond's Nominal Price.  
Nominal Price in Euros (€), except if it is noted differently.



## Government Bonds

Number Listed Bonds	Nominal price	Today's Rate	Accrued Interest Calc	Exp. Date [1]	Duration (years)	Note	Coupons Date	Curr. coupon value	Trading Unit	Government Bonds	Price min	Price max	Closing price	Previous closing price/date	Volume	Transactions Value	Price	Last order Buy / Sell	Date
3,000,000	1,000.00	4.38	Actual/Actual	01/08/2022	5	---	01/08	4.38	1	GGB-FXD-010822-05Y-4.375-1,000	---	---	---	---	---	---	55.0001	B	12/12/2017
4,355,990,324	1.00	3.50	Actual/Actual	30/01/2023	5	---	01/02 - 31/01	3.50	1	GGB-FXD-300123-05Y-3.500-1.00	---	---	---	---	---	---	83.0001	B	18/12/2017
5,962,747,327	1.00	3.75	Actual/Actual	30/01/2028	10	---	/02 - 01/02 - 31/	3.75	1	GGB-FXD-300128-10Y-3.750-1.00	---	---	---	---	---	---	77.0001	B	18/12/2017
6,091,218,404	1.00	3.90	Actual/Actual	30/01/2033	15	---	/02 - 01/02 - 31/	3.90	1	GGB-FXD-300133-15Y-3.900-1.00	---	---	---	---	---	---	70.0001	B	18/12/2017
4,805,399,486	1.00	4.00	Actual/Actual	30/01/2037	19	---	/02 - 01/02 - 31/	4.00	1	GGB-FXD-300137-19Y-4.000-1.00	---	---	---	---	---	---	69.0001	B	18/12/2017
4,603,713,186	1.00	4.20	Actual/Actual	30/01/2042	24	---	/02 - 01/02 - 31/	4.20	1	GGB-FXD-300142-24Y-4.200-1.00	---	---	---	---	---	---	67.0001	B	18/12/2017
550,418,123	1.00	3.00	Actual/Actual	24/02/2023	11	---	24/02	3.00	1	GGB-FXD-240223-11Y-2.000-1.00	---	---	---	10.0000 22/06/2015	---	---	---	---	---
445,007,576	1.00	3.00	Actual/Actual	24/02/2024	12	---	24/02	3.00	1	GGB-FXD-240224-12Y-2.000-1.00	---	---	---	10.0000 22/06/2015	---	---	---	---	---
423,674,226	1.00	3.00	Actual/Actual	24/02/2025	13	---	24/02	3.00	1	GGB-FXD-240225-13Y-2.000-1.00	---	---	---	10.0000 22/06/2015	---	---	---	---	---
212,292,153	1.00	3.00	Actual/Actual	24/02/2026	14	---	24/02	3.00	1	GGB-FXD-240226-14Y-2.000-1.00	---	---	---	10.0000 22/06/2015	---	---	---	---	---
160,621,352	1.00	3.00	Actual/Actual	24/02/2027	15	---	24/02	3.00	1	GGB-FXD-240227-15Y-2.000-1.00	---	---	---	10.0000 22/06/2015	---	---	---	---	---
183,244,055	1.00	3.00	Actual/Actual	24/02/2028	16	---	24/02	3.00	1	GGB-FXD-240228-16Y-2.000-1.00	---	---	---	10.0000 22/06/2015	---	---	---	---	---
164,802,894	1.00	3.00	Actual/Actual	24/02/2029	17	---	24/02	3.00	1	GGB-FXD-240229-17Y-2.000-1.00	---	---	---	10.0000 22/06/2015	---	---	---	---	---
165,460,943	1.00	3.00	Actual/Actual	24/02/2030	18	---	24/02	3.00	1	GGB-FXD-240230-18Y-2.000-1.00	---	---	---	10.0000 22/06/2015	---	---	---	---	---
129,007,241	1.00	3.00	Actual/Actual	24/02/2031	19	---	24/02	3.00	1	GGB-FXD-240231-19Y-2.000-1.00	---	---	---	10.0000 22/06/2015	---	---	---	---	---
126,192,683	1.00	3.00	Actual/Actual	24/02/2032	20	---	24/02	3.00	1	GGB-FXD-240232-20Y-2.000-1.00	---	---	---	10.0000 22/06/2015	---	---	---	---	---
146,905,168	1.00	3.00	Actual/Actual	24/02/2033	21	---	24/02	3.00	1	GGB-FXD-240233-21Y-2.000-1.00	---	---	---	10.0000 22/06/2015	---	---	---	---	---
154,475,606	1.00	3.00	Actual/Actual	24/02/2034	22	---	24/02	3.00	1	GGB-FXD-240234-22Y-2.000-1.00	---	---	---	10.0000 22/06/2015	---	---	---	---	---
144,429,441	1.00	3.00	Actual/Actual	24/02/2035	23	---	24/02	3.00	1	GGB-FXD-240235-23Y-2.000-1.00	---	---	---	10.0000 22/06/2015	---	---	---	---	---
166,211,676	1.00	3.00	Actual/Actual	24/02/2036	24	---	24/02	3.00	1	GGB-FXD-240236-24Y-2.000-1.00	---	---	---	10.0000 22/06/2015	---	---	---	---	---
145,461,669	1.00	3.00	Actual/Actual	24/02/2037	25	---	24/02	3.00	1	GGB-FXD-240237-25Y-2.000-1.00	---	---	---	10.0000 22/06/2015	---	---	---	---	---
146,941,087	1.00	3.00	Actual/Actual	24/02/2038	26	---	24/02	3.00	1	GGB-FXD-240238-26Y-2.000-1.00	---	---	---	10.0000 22/06/2015	---	---	---	---	---
135,115,612	1.00	3.00	Actual/Actual	24/02/2039	27	---	24/02	3.00	1	GGB-FXD-240239-27Y-2.000-1.00	---	---	---	10.0000 22/06/2015	---	---	---	---	---
141,909,637	1.00	3.00	Actual/Actual	24/02/2040	28	---	24/02	3.00	1	GGB-FXD-240240-28Y-2.000-1.00	---	---	---	10.0000 22/06/2015	---	---	---	---	---
136,788,720	1.00	3.00	Actual/Actual	24/02/2041	29	---	24/02	3.00	1	GGB-FXD-240241-29Y-2.000-1.00	---	---	---	10.0000 22/06/2015	---	---	---	---	---
163,643,410	1.00	3.00	Actual/Actual	24/02/2042	30	---	24/02	3.00	1	GGB-FXD-240242-30Y-2.000-1.00	---	---	---	10.0000 22/06/2015	---	---	---	---	---
742,153	1,000.00	0.35	FLR Actual/360	10/08/2019	5	---	10/02 - 10/08	---	1	GGB-FLT-100819-05Y-0.934-1,000	---	---	---	---	---	---	50.0001	B	12/12/2017
3,000,000	1,000.00	3.38	Actual/Actual	15/02/2025	7	---	15/02	3.38	1	GGB-FXD-150225-07Y-3.375-1,000	---	---	---	---	---	---	---	---	---
2,456,470	1,000.00	4.75	Actual/Actual	17/04/2019	5	---	17/04	4.75	1	GGB-FXD-170419-05Y-4.750-1,000	---	---	---	---	---	---	---	---	---

## Government Bonds Notes

Transactions Volume = (Pieces) \* (Nominal Price). Transactions Value = (Pieces) \* (Nominal Price) \* (price %) + (Accrued interest).

The Value of current coupon for the issues with NV 0.01 euro refers to NV 100 euros

FLR: Floating Interest Rate.

[1] - The Expiration Date of the interest bearing period and the Date for coupon payment.

Bonds in Circulation	Currency / Min nominal traded Value	Coupons Payment Date	Current Coupon Value	Note	Coupon	Trading Unit	Issue Date	Duration (years)	Today's Interest	A.I.C in days	Bonds	Last price of previous days		Last Outcry in Cash (euro) Price Buy / Sell		Trades in Pieces	Life min	Life Max	
Corporate Bonds in Foreign Currency and Euro																			
103,746	GBP / 10	01/12	0.25	---	59	1	01/12/1930	98	2.5	360	National Mortgage Bank	2.27	05/02/1996	2.27	S	05/02/1996	---	2.27	2.27
0	GBP / 10	01/12	0.25	---	61	1	01/12/1928	100	2.5	360	National Mortgage Bank	---	---	---	---	---	---	---	---

Government Bonds Notes

A.I.C: Accrued Interest Calculation base.  
FLR: Floating Interest Rate.  
The minimum tradeable Nominal Value for all Demeterialised Government Titles is 100 Euros.  
(μτφρ-0)

Athex & ATHEXClear Members List

Member Name			Stock Market			Derivatives Market		ATHEXClear Member	
Address	Phone	Fax	Market Member	Remote Member	Market Maker	Proprietary	Market Maker	General Clearing	Direct Clearing
A. SARRIS SECURITIES S.A.			a						
6, DRAGATSANIOU ATHINA	+30 2103367700	210-3312324							
ALPHA FINANCE INVESTMENT SERVICES S.A.			a		a	a	a		a
5, MERLIN ATHINA	+30 2103677400	210-33311193							
ALPHA BANK A.E.								a	
40, STADIOU STR ATHINA	(210)-3260000	(210)-3264116							
	(210)-3265546	(210)-3265811							
103, AVE. ATHINON ATHINA	+30 2103436820	210-3436270							
ARDU PRIME SECURITIES S.A			a						
12-14, KARAGIORGI SERVIAS ATHINA	+30 2103800820	210-3000854							
ARGUS STOCKBROKERS LTD			a	a		a			
25 , DIMOSTHENI SEVERI AVE NICOSIA	+357 22717000	0035722717070							
ATLANTIC SECURITIES LIMITED			a	a					
37, PRODROMOU NICOSIA	+357 22445400	00357 22661914							
ATLAS SECURITIES S.A			a			a			
, 125 MICHALAKOPOULOU & 14-16 VERVENON ATHINA	+30 2103363300	210-3238925							
AXIA VENTURES GROUP LTD			a	a					
, KRANIDIOTI 10, OFFICE 102 NICOSIA	+357 22742000	357 22742001							
AXON SECURITIES S.A.			a			a			
48, STADIOU ATHINA	+30 2103363800	210-3243903							
BANK OF AMERICA MERRILL LYNCH			a	a					
2 , KING EDWARD STREET LONDON	+44 20276281000								
BETA SECURITIES S.A.			a		a	a			a
29 , ALEXANDRAS AVEN. & VRAILA ATHINA	+30 2106478900	210-6410139							
BNP PARIBAS SECURITIES SERVICES								a	
2, LAMPSAKOU ATHINA	+30 2107468500	210-7468579-581							
CAPITAL SECURITIES S.A.			a			a			
58, MITROPOLEOS ATHINA	+30 2103369700	+30 210 3369820							
CFS SECURITIES-INVESTMENT SERVICES S.A.			a						
3, PAPARRIGOPOULOU ATHINA	+30 2103360800	+30 210-3360980							
CITIGROUP GLOBAL MARKET LTD			a	a					
1, CITIGROUP CENTER , CANADA SQ., CANARY WHARF LONDON	+44 02079864000								
CREDIT SUISSE SECURITIES (EUROPE) LIMITED			a	a					
1 , CABOT SQUARE LONDON	+44 2078888888								
CYCLOS SECURITIES S.A.			a			a			a
39, PANEPISTIMIOU ATHINA	+30 2103364300	+30 210-3239122							
D.A. TSEKOURAS SEC. S.A.			a						
33, STADIOU ATHINA	+30 2103245100	210-3211997							
DEUTSCHE BANK S.A.			a	a		a			
1 , GREAT WINCHESTER STREET LONDON	+44 20 754 54209	00441133361437							
DYNAMIC SECURITIES S.A.			a			a			a
8, OMIROU ATHINA	+30 2103677700	210-3677777							
EUROBANK EQUITIES INVESTMENT FIRM S.A			a		a	a	a		a
, FILELLINON 10 & XENOFONTOS 13 ATHINA	+30 2103720000	210-3720001							
EUROBANK ERGASIAS S.A.								a	
8, OTHONOS STR. ATHINA	(210)-3337000	(210)-3233866							
8, OTHONOS ATHINA	+30 2103337000	210-3245916							
8, OTHONOS STR. ATHINA	(210)-3337969	(210)-3245916							
EUROCORP INVESTMENT SERVICES S.A.			a			a			a
14, FILIKIS ETERIAS SQ, ATHINA	+30 2107263500	2107263666							
EUOTRUST BROKERAGE S.A.			a						
113, SEVASTOUPOLEOS ATHINA	+30 2103363100	+30 210-3238334							
EUROXX SECURITIES S.A.			a		a	a	a		a
7, PALEOLOGOU CHALANDRI	+30 2106879400	210-6879401							
7, PALAIOLOGOU CHALANDRI	(210)-6879400	(210)-6879401							
G. A. PERVANAS SECURITIES-INVESTMENT SERVICES CO S.A.			a						
7-9, SOFOKLEOUS ATHINA	+30 2103727200	210-3210-291							
GLOBAL CAPITAL SECURITIES AND FINANCIAL SERVICES LTD			a	a					
50, AVE. ARCHIEPISKOPOU MAKARIOU NICOSIA	+357 22710710	357 22339332							
HELLENIC BANK (INVESTMENTS) LTD				a					
, AVE.KYRIAKOU MATSI 31 - PO BOX 24747 NICOSIA	+357 22500100	357 22500110							
HELLENICAMERICAN SEC. S.A.			a		a	a			a
27, ANDREA PAPANDREOU ATHINA	+30 2103311100	+30 210-3215968							

Athex & ATHEXClear Members List

Member Name			Stock Market			Derivatives Market		ATHEXClear Member	
Address	Phone	Fax	Market Member	Remote Member	Market Maker	Proprietary	Market Maker	General Clearing	Direct Clearing
HSBC FRANCE								a	
109-111, AVE. MESOGION ATHINA	+30 2106960000	210-6929336							
INDEX SECURITIES S.A.			a						
6, DRAGATSANIOU ATHINA	+30 2103213920	+30 210-3213216							
INVESTMENT BANK OF GREECE S.A.			a		a	a	a	a	
32 , EGIALIAS & PARADISOU MAROUSI	+30 2108173111	+30 210-6896325							
J. CHR. MAVRIKIS SECURITIES S.A.			a						
5, SOFOKLEOUS ATHINA	+30 2103216730	210-3217767							
KAPPA SECURITIES S.A.			a			a			
15, VALAORITOU ATHINA	+30 2103678600	+30 210-3641002							
KARAMANOF SECURITIES-INV. SERVICES S.A.			a			a			
2, SQ. AGION THEODORON ATHINA	+30 2103212947	+30 210-3217088							
LAIKI FINANCIAL SERVICES LTD				a					
26, AVE. VYRONOS NICOSIA	357 22367367	357 22718567							
LEON DEPOLAS SECURITIES S.A.			a		a	a			
1, CHRISTOU LADA ATHINA	+30 2103213276	+30 210-3211618							
MEGA EQUITY SECURITIES & FINANCIAL SERVICES PUBLIC LTD			a	a		a			
42-44, AVE. GRIVA DIGENI NICOSIA	+357 22711711	357 22711811							
MERIT SECURITIES S.A			a		a	a			a
5, SOFOKLEOUS ATHINA	+30 2141008800	210-6971830							
N. CHRYSOCHOIDIS STOCK BROKERAGE I.S.S.A.			a			a			a
7-9, SOFOKLEOUS ATHINA	+30 2103213913	+30 210-3216115							
NATIONAL BANK OF GREECE S.A.			a		a	a		a	
68, AKADIMIAS STR. ATHINA	(210)-3328817	(210)-3328678							
86, AIOLOU STR. ATHINA	(210)-3341000	(210)-3228187							
NATIONAL SECURITIES S.A			a		a	a	a		
66, KIFISIAS AVE , BUILDING A ATHINA	+30 2107720000	+30 210-7720002							
NUNTIUS SECURITIES S.A			a						
6, DRAGATSANIOU ATHINA	+30 2103350599	+30210-3254846							
ONE PLUS CAPITAL LIMITED			a	a					
, 75 PRODROMOU AVENUE , ONEWORLD PARKVIEW HOUSE, 3RD FLOOR, 22873760									
PANTELAKIS SECURITIES S.A.			a		a	a	a		
57, ETHNIKIS ANTISTASIS B CHALANDRI	+30 2106965000	210-6929550							
PEGASUS SECURITIES S.A			a			a			
17 , VALAORITOU & AMERIKIS ATHINA	+30 2103670700	+30 210-3670760							
PIRAEUS BANK S.A.			a			a		a	
4, AMERIKIS STR. ATHINA	(210)-3335000	(210)-3335079							
4, AMERIKIS STR ATHINA	(210)-3335918	(210)-3254207							
4, AMERIKIS ATHINA	+30 2103335000	210-3335079							
PIRAEUS SECURITIES S.A.			a		a	a	a		a
10, STADIOU ATHINA	+30 2103354100	210-3354170							
PRELIUM INVESTMENT SERVICES S.A.			a			a			
342, KIFISIAS ATHINA	+30 2103677000	+30 210-6926403							
PROCHOICE SECURITIES LTD			a	a					
57, SPYROY KYPRIANOY NICOSIA	+357-24-661192	+357-24-662464							
SHARELINK SECURITIES-FINANCIAL SERVICES LTD			a	a		a			
6 , THEOTOKI MEGARO ELLINA NICOSIA	+357 22554200	+357 22750852							
SOCIETE GENERALE S.A.			a	a		a			
, 17 COURS VALMY 92987 PUTEAUX - LA DEFENSE PARIS	+33 157290504	+33142138697							
SOLIDUS SECURITIES S.A			a			a			a
64, LOUIZIS RIANCOUR ATHINA	+30 2106900600	210-6985421							
ST. EM. LAVRENTAKIS SECURITIES S.A.			a			a			
7-9, SOFOKLEOUS ATHINA	+30 2103213336	+30 210-3246572							
THE CYPRUS INVESTMENT & SECURITIES CORPORATION LTD			a	a					
154, LIMASSOL AVENUE, STROVOLOS NICOSIA	+357 22121700	357 22338800							
UBS LIMITED			a	a					
1 , FINSBURY AVENUE LONDON	+44 2075687135								

## List of Stocks under Market Making operations

Securities	Stock Category
Market Maker	Start Market Making
<b>ADMIE (IPTO) HOLDING S.A. (CR)</b>	Main Market
PIRAEUS SECURITIES S.A.	29/06/2017
<b>ALPHA BANK (CR)</b>	Main Market
ALPHA FINANCE INVESTMENT SERVICES S.A.	29/02/2016
EUROBANK EQUITIES INVESTMENT FIRM S.A	24/10/2012
LEON DEPOLAS SECURITIES S.A.	04/01/2016
MERIT SECURITIES S.A	03/09/2013
NATIONAL SECURITIES S.A	15/01/2013
PIRAEUS SECURITIES S.A.	28/05/2013
<b>ALUMIL (CR)</b>	Main Market
BETA SECURITIES S.A.	18/07/2013
<b>ATTICA BANK S.A. (CR)</b>	Main Market
BETA SECURITIES S.A.	02/06/2014
EUROXX SECURITIES S.A.	22/01/2016
PIRAEUS SECURITIES S.A.	20/09/2017
<b>ATTICA HOLDINGS (CR)</b>	Main Market
HELLENICAMERICAN SEC. S.A.	28/12/2017
<b>BYTE COMPUTER SA (CR)</b>	Main Market
MERIT SECURITIES S.A	04/08/2013
<b>CC HBC AG (CR)</b>	Main Market
EUROBANK EQUITIES INVESTMENT FIRM S.A	23/10/2013
NATIONAL SECURITIES S.A	29/04/2013
PIRAEUS SECURITIES S.A.	04/05/2015
<b>CENERGY HOLDINGS (CB)</b>	Main Market
ALPHA FINANCE INVESTMENT SERVICES S.A.	02/01/2017
EUROBANK EQUITIES INVESTMENT FIRM S.A	02/01/2017
<b>EKTER SA (CR)</b>	Main Market
EUROBANK EQUITIES INVESTMENT FIRM S.A	16/10/2017
<b>ELASTRON (CR)</b>	Main Market
LEON DEPOLAS SECURITIES S.A.	20/02/2017
<b>ELLAKTOR (CR)</b>	Main Market
EUROBANK EQUITIES INVESTMENT FIRM S.A	01/06/2013
NATIONAL SECURITIES S.A	25/06/2013
<b>ELTON SA (CR)</b>	Main Market
BETA SECURITIES S.A.	03/09/2013
<b>EUROBANK ERGASIAS (CR)</b>	Main Market
ALPHA FINANCE INVESTMENT SERVICES S.A.	08/01/2013
EUROBANK EQUITIES INVESTMENT FIRM S.A	01/06/2013
HELLENICAMERICAN SEC. S.A.	25/07/2014
MERIT SECURITIES S.A	06/11/2017
NATIONAL SECURITIES S.A	01/01/2017
PIRAEUS SECURITIES S.A.	28/09/2013
<b>FOLLI FOLLIE (CR)</b>	Main Market
NATIONAL SECURITIES S.A	17/02/2014
PIRAEUS SECURITIES S.A.	04/05/2015
<b>FOURLIS (CR)</b>	Main Market
EUROBANK EQUITIES INVESTMENT FIRM S.A	01/12/2016
EUROXX SECURITIES S.A.	01/12/2016
PIRAEUS SECURITIES S.A.	06/03/2017
<b>GEK TERNA (CR)</b>	Main Market
HELLENICAMERICAN SEC. S.A.	07/09/2015
<b>GR. SARANTIS SA (CR)</b>	Main Market
ALPHA FINANCE INVESTMENT SERVICES S.A.	19/06/2017
BETA SECURITIES S.A.	14/05/2013
EUROBANK EQUITIES INVESTMENT FIRM S.A	24/10/2016
<b>GRIVALIA PROPERTIES (CR)</b>	Main Market
EUROBANK EQUITIES INVESTMENT FIRM S.A	20/09/2017
<b>HELLENIC EXCHANGES-A.S.E. (CR)</b>	Main Market
HELLENICAMERICAN SEC. S.A.	01/09/2014
NATIONAL SECURITIES S.A	25/06/2013
PIRAEUS SECURITIES S.A.	04/05/2015
<b>HELLENIC PETROLEUM (CR)</b>	Main Market
HELLENICAMERICAN SEC. S.A.	14/09/2015
PIRAEUS SECURITIES S.A.	20/03/2017
<b>HYGEIA SA (CR)</b>	Main Market
HELLENICAMERICAN SEC. S.A.	18/04/2016
<b>INTERCONTINENTAL (CR)</b>	Main Market
EUROXX SECURITIES S.A.	20/02/2017

## List of Stocks under Market Making operations

Securities	Stock Category
Market Maker	Start Market Making
<b>INTRACOM HOLDINGS (CR)</b>	Main Market
HELLENICAMERICAN SEC. S.A.	07/09/2015
<b>INTRALOT (CR)</b>	Main Market
ALPHA FINANCE INVESTMENT SERVICES S.A.	03/07/2017
EUROBANK EQUITIES INVESTMENT FIRM S.A	18/12/2017
EUROXX SECURITIES S.A.	12/06/2017
PIRAEUS SECURITIES S.A.	28/09/2013
<b>J &amp; P - AVAX SA (CR)</b>	Main Market
EUROBANK EQUITIES INVESTMENT FIRM S.A	14/12/2015
<b>JUMBO SA (CR)</b>	Main Market
MERIT SECURITIES S.A	06/11/2017
PIRAEUS SECURITIES S.A.	06/03/2017
<b>KLOUKINAS - LAPPAS SA (CR)</b>	Main Market
BETA SECURITIES S.A.	22/09/2014
<b>KRI-KRI S.A. (CR)</b>	Main Market
LEON DEPOLAS SECURITIES S.A.	16/01/2017
<b>LAMDA DEVELOPMENT SA (CR)</b>	Main Market
EUROBANK EQUITIES INVESTMENT FIRM S.A	08/12/2014
PANTELAKIS SECURITIES S.A.	06/11/2017
PIRAEUS SECURITIES S.A.	29/06/2017
<b>LAMPSA HOTEL SA (CR)</b>	Main Market
LEON DEPOLAS SECURITIES S.A.	16/01/2017
<b>MARFIN INVESTMENT GROUP (CR)</b>	Main Market
HELLENICAMERICAN SEC. S.A.	25/07/2014
LEON DEPOLAS SECURITIES S.A.	20/02/2017
PIRAEUS SECURITIES S.A.	02/02/2013
<b>MLS MULTIMEDIA SA (CR)</b>	Main Market
HELLENICAMERICAN SEC. S.A.	07/12/2015
<b>MOTOR OIL (CR)</b>	Main Market
HELLENICAMERICAN SEC. S.A.	01/09/2014
NATIONAL SECURITIES S.A	17/02/2014
PIRAEUS SECURITIES S.A.	04/05/2015
<b>MYTILINEOS HOLDINGS (CR)</b>	Main Market
EUROBANK EQUITIES INVESTMENT FIRM S.A	20/09/2017
NATIONAL SECURITIES S.A	25/06/2013
PIRAEUS SECURITIES S.A.	04/05/2015
<b>NATIONAL BANK (CR)</b>	Main Market
ALPHA FINANCE INVESTMENT SERVICES S.A.	08/01/2013
EUROBANK EQUITIES INVESTMENT FIRM S.A	24/10/2012
HELLENICAMERICAN SEC. S.A.	25/07/2014
LEON DEPOLAS SECURITIES S.A.	20/04/2015
MERIT SECURITIES S.A	03/09/2013
NATIONAL SECURITIES S.A	28/02/2013
PIRAEUS SECURITIES S.A.	08/09/2013
<b>OPAP (CR)</b>	Main Market
ALPHA FINANCE INVESTMENT SERVICES S.A.	08/01/2013
EUROBANK EQUITIES INVESTMENT FIRM S.A	24/10/2012
HELLENICAMERICAN SEC. S.A.	25/07/2014
MERIT SECURITIES S.A	20/03/2017
NATIONAL SECURITIES S.A	15/01/2013
PIRAEUS SECURITIES S.A.	04/05/2015
<b>OTE (CR)</b>	Main Market
ALPHA FINANCE INVESTMENT SERVICES S.A.	08/01/2013
EUROBANK EQUITIES INVESTMENT FIRM S.A	24/10/2012
HELLENICAMERICAN SEC. S.A.	25/07/2014
MERIT SECURITIES S.A	20/03/2017
NATIONAL SECURITIES S.A	01/12/2012
PIRAEUS SECURITIES S.A.	08/09/2013
<b>PAPOUTSANIS (CR)</b>	Main Market
BETA SECURITIES S.A.	25/11/2013
<b>PETROPOULOS PETROS (CR)</b>	Main Market
BETA SECURITIES S.A.	28/05/2013
<b>PIRAEUS BANK (CR)</b>	Main Market
EUROBANK EQUITIES INVESTMENT FIRM S.A	23/10/2012
EUROXX SECURITIES S.A.	15/02/2016
MERIT SECURITIES S.A	16/09/2013
NATIONAL SECURITIES S.A	02/06/2013
PIRAEUS SECURITIES S.A.	16/02/2013

## List of Stocks under Market Making operations

Securities	Stock Category
Market Maker	Start Market Making
<b>PLAISIO COMPUTERS SA (CR)</b>	<b>Main Market</b>
BETA SECURITIES S.A.	05/05/2014
EUROBANK EQUITIES INVESTMENT FIRM S.A	02/03/2015
<b>PPC (CR)</b>	<b>Main Market</b>
ALPHA FINANCE INVESTMENT SERVICES S.A.	08/01/2013
EUROBANK EQUITIES INVESTMENT FIRM S.A	23/10/2012
HELLENICAMERICAN SEC. S.A.	28/12/2017
MERIT SECURITIES S.A	06/11/2017
NATIONAL SECURITIES S.A	26/03/2013
PIRAEUS SECURITIES S.A.	28/09/2013
<b>QUALITY &amp; RELIABILITY SA (CR)</b>	<b>Main Market</b>
BETA SECURITIES S.A.	20/08/2014
<b>QUEST HOLDINGS (CR)</b>	<b>Main Market</b>
BETA SECURITIES S.A.	26/03/2018
<b>S.KANAKIS SA (CR)</b>	<b>Main Market</b>
BETA SECURITIES S.A.	01/10/2013
<b>THRACE PLASTICS SA (CR)</b>	<b>Main Market</b>
ALPHA FINANCE INVESTMENT SERVICES S.A.	26/03/2018
EUROBANK EQUITIES INVESTMENT FIRM S.A	26/03/2018
<b>TITAN CEMENT (CR)</b>	<b>Main Market</b>
NATIONAL SECURITIES S.A	17/02/2014
PIRAEUS SECURITIES S.A.	04/05/2015
<b>VIOHALCO SA/NV (CB)</b>	<b>Main Market</b>
ALPHA FINANCE INVESTMENT SERVICES S.A.	17/02/2014
EUROBANK EQUITIES INVESTMENT FIRM S.A	01/01/2017
MERIT SECURITIES S.A	17/03/2014

Underlying Asset				Derivatives Market													
Price max	Price min	Closing price	change	Delivery Month	Open price	Price max	Price min	Last price	Closing price	Last Bid	Last Ask	Settlement price	Life high	Life low	Trades	Volume	Open Interest
FTSE/Athex Large Cap				(Trade Unit: 1 Index Point x 2€, Cash Settlement)													
2,190.77	2,163.33	2,190.38	0.79%	April 2018	2,167.00	2,190.75	2,164.50	2,188.00	2,188.00	---	---	2,185.00	2,241.00	---	235	2,582	3,397
				May 2018	2,170.00	2,190.00	2,160.50	2,188.25	2,188.25	---	---	2,184.00	2,190.00	---	390	2,757	6,470
				June 2018	2,170.00	2,170.00	2,168.00	2,168.00	2,168.00	---	---	2,180.25	2,178.00	---	2	2	64
				September 2018	---	---	---	---	2,192.00	---	---	---	---	---	---	---	---
				December 2018	---	---	---	---	2,203.00	---	---	---	---	---	---	---	---
				March 2019	---	---	---	---	2,213.25	---	---	---	---	---	---	---	---



Underlying Asset				Derivatives Market													
Price max	Price min	Closing price	change	Delivery Month	Open price	Price max	Price min	Last price	Closing price	Last Bid	Last Ask	Settlement price	Life high	Life low	Trades	Volume	Open Interest
ADMIE (IPTO) HOLDING S.A. (CR)				(Contract Size: 100 Securities, Physical Delivery)													
1.898	1.862	1.89	-0.42%	June 2018	1.89	1.91	1.87	1.89	1.89	---	---	1.89	2.16	---	45	204	8,899
				September 2018	---	---	---	---	1.91	---	---	---	---	---	---	---	---
				December 2018	---	---	---	---	1.92	---	---	---	---	---	---	---	---
				March 2019	---	---	---	---	1.93	---	---	---	---	---	---	---	---
ALPHA BANK (CR)				(Contract Size: 100 Securities, Physical Delivery)													
2.128	2.07	2.128	1.04%	June 2018	2.08	2.14	2.07	2.13	2.13	---	---	2.13	2.14	---	203	5,630	17,585
				September 2018	---	---	---	---	2.12	---	---	2.15	1.89	---	---	---	2
				December 2018	---	---	---	---	2.13	---	---	---	---	---	---	---	---
				March 2019	---	---	---	---	2.14	---	---	---	---	---	---	---	---
ATTICA BANK S.A. (CR)				(Contract Size: 100 Securities, Physical Delivery)													
0.0362	0.0339	0.0362	3.13%	June 2018	---	---	---	---	0.035	---	---	0.035	0.037	---	---	---	6,916
				September 2018	---	---	---	---	0.035	---	---	---	---	---	---	---	---
				December 2018	---	---	---	---	0.036	---	---	---	---	---	---	---	---
				March 2019	---	---	---	---	0.036	---	---	---	---	---	---	---	---
CC HBC AG (CR)				(Contract Size: 100 Securities, Physical Delivery)													
28.82	28.35	28.64	0.21%	June 2018	28.40	28.69	28.40	28.69	28.69	---	---	28.72	30.60	---	6	13	298
				September 2018	---	---	---	---	28.83	---	---	---	---	---	---	---	---
				December 2018	---	---	---	---	28.97	---	---	---	---	---	---	---	---
				March 2019	---	---	---	---	29.11	---	---	---	---	---	---	---	---
CENERGY HOLDINGS (CB)				(Contract Size: 100 Securities, Physical Delivery)													
1.3	1.262	1.28	0.79%	June 2018	1.27	1.30	1.27	1.28	1.28	---	---	1.28	1.50	---	26	185	5,284
				September 2018	---	---	---	---	1.28	---	---	1.27	1.17	---	---	---	---
				December 2018	---	---	---	---	1.29	---	---	---	---	---	---	---	---
				March 2019	---	---	---	---	1.29	---	---	---	---	---	---	---	---
ELLAKTOR (CR)				(Contract Size: 100 Securities, Physical Delivery)													
1.646	1.602	1.604	-1.35%	June 2018	1.62	1.65	1.61	1.61	1.61	---	---	1.61	1.88	---	60	277	10,710
				September 2018	---	---	---	---	1.64	---	---	---	---	---	---	---	---
				December 2018	---	---	---	---	1.65	---	---	---	---	---	---	---	---
				March 2019	---	---	---	---	1.66	---	---	---	---	---	---	---	---
EUROBANK ERGASIAS (CR)				(Contract Size: 100 Securities, Physical Delivery)													
0.9875	0.952	0.97	-1.02%	June 2018	0.962	0.987	0.958	0.969	0.969	---	---	0.963	0.987	---	226	5,401	35,397
				September 2018	---	---	---	---	0.988	---	---	---	---	---	---	---	---
				December 2018	---	---	---	---	0.993	---	---	---	---	---	---	---	---
				March 2019	---	---	---	---	0.998	---	---	---	---	---	---	---	---
EYDAP S.A. (CR)				(Contract Size: 100 Securities, Physical Delivery)													
6.21	6.06	6.2	1.64%	June 2018	6.14	6.18	6.14	6.18	6.18	---	---	6.19	6.36	---	4	8	1,269
				September 2018	---	---	---	---	6.15	---	---	---	---	---	---	---	---
				December 2018	---	---	---	---	6.18	---	---	---	---	---	---	---	---
				March 2019	---	---	---	---	6.21	---	---	---	---	---	---	---	---

Underlying Asset				Derivatives Market													
Price max	Price min	Closing price	change	Delivery Month	Open price	Price max	Price min	Last price	Closing price	Last Bid	Last Ask	Settlement price	Life high	Life low	Trades	Volume	Open Interest
FOLLI FOLLIE (CR)				(Contract Size: 100 Securities, Physical Delivery)													
17.08	16.68	16.98	1.68%	June 2018	16.68	17.14	16.68	17.12	17.12	---	---	17.09	18.18	---	81	101	797
				September 2018	---	---	---	---	16.84	---	---	---	---	---	---	---	---
				December 2018	---	---	---	---	16.93	---	---	---	---	---	---	---	---
				March 2019	---	---	---	---	17.01	---	---	---	---	---	---	---	---
FOURLIS (CR)				(Contract Size: 100 Securities, Physical Delivery)													
5.6	5.49	5.58	1.46%	June 2018	5.59	5.63	5.57	5.57	5.57	---	---	5.56	5.90	---	6	19	167
				September 2018	---	---	---	---	5.55	---	---	---	---	---	---	---	---
				December 2018	---	---	---	---	5.58	---	---	---	---	---	---	---	---
				March 2019	---	---	---	---	5.60	---	---	---	---	---	---	---	---
GEK TERNA (CR)				(Contract Size: 100 Securities, Physical Delivery)													
5.26	5.13	5.18	-1.33%	June 2018	5.28	5.28	5.16	5.26	5.26	---	---	5.24	5.52	---	56	232	6,262
				September 2018	---	---	---	---	5.30	---	---	---	---	---	---	---	---
				December 2018	---	---	---	---	5.32	---	---	---	---	---	---	---	---
				March 2019	---	---	---	---	5.35	---	---	---	---	---	---	---	---
GRIVALIA PROPERTIES (CR)				(Contract Size: 100 Securities, Physical Delivery)													
9.22	9.06	9.17	0.77%	June 2018	9.13	9.16	9.13	9.16	9.16	---	---	9.00	9.30	---	2	3	113
				September 2018	---	---	---	---	9.18	---	---	---	---	---	---	---	---
				December 2018	---	---	---	---	9.22	---	---	---	---	---	---	---	---
				March 2019	---	---	---	---	9.27	---	---	---	---	---	---	---	---
HELLENIC EXCHANGES-A.S.E. (CR)				(Contract Size: 100 Securities, Physical Delivery)													
5.18	5.08	5.08	-1.74%	June 2018	5.10	5.14	5.08	5.08	5.08	---	---	5.02	5.42	---	11	21	1,178
				September 2018	---	---	---	---	5.21	---	---	---	---	---	---	---	---
				December 2018	---	---	---	---	5.24	---	---	---	---	---	---	---	---
				March 2019	---	---	---	---	5.27	---	---	---	---	---	---	---	---
HELLENIC PETROLEUM (CR)				(Contract Size: 100 Securities, Physical Delivery)													
8.62	8.46	8.58	-0.23%	June 2018	8.56	8.63	8.51	8.56	8.56	---	---	8.58	8.63	---	42	144	3,896
				September 2018	---	---	---	---	8.67	---	---	8.64	8.01	---	---	---	---
				December 2018	---	---	---	---	8.72	---	---	---	---	---	---	---	---
				March 2019	---	---	---	---	8.76	---	---	---	---	---	---	---	---
INTRACOM HOLDINGS (CR)				(Contract Size: 100 Securities, Physical Delivery)													
0.855	0.828	0.846	1.32%	June 2018	0.843	0.860	0.836	0.836	0.836	---	---	0.848	0.900	---	11	229	4,760
				September 2018	---	---	---	---	0.842	---	---	0.821	0.812	---	---	---	---
				December 2018	---	---	---	---	0.846	---	---	---	---	---	---	---	---
				March 2019	---	---	---	---	0.850	---	---	---	---	---	---	---	---
INTRALOT (CR)				(Contract Size: 100 Securities, Physical Delivery)													
1.194	1.172	1.176	-1.34%	June 2018	1.18	1.20	1.17	1.18	1.18	---	---	1.18	1.48	---	31	212	10,576
				September 2018	---	---	---	---	1.20	---	---	---	---	---	---	---	---
				December 2018	---	---	---	---	1.21	---	---	---	---	---	---	---	---
				March 2019	---	---	---	---	1.21	---	---	---	---	---	---	---	---

Underlying Asset				Derivatives Market													
Price max	Price min	Closing price	change	Delivery Month	Open price	Price max	Price min	Last price	Closing price	Last Bid	Last Ask	Settlement price	Life high	Life low	Trades	Volume	Open Interest
JUMBO SA (CR)				(Contract Size: 100 Securities, Physical Delivery)													
15.38	15.08	15.38	1.18%	June 2018	15.15	15.44	15.15	15.43	15.43	---	---	15.35	16.00	---	35	82	666
				September 2018	---	---	---	---	15.33	---	---	---	---	---	---	---	---
				December 2018	---	---	---	---	15.41	---	---	---	---	---	---	---	---
				March 2019	---	---	---	---	15.48	---	---	---	---	---	---	---	---
LAMDA DEVELOPMENT SA (CR)				(Contract Size: 100 Securities, Physical Delivery)													
6.75	6.66	6.71	-0.15%	June 2018	6.79	6.80	6.70	6.72	6.72	---	---	6.72	7.43	---	17	58	2,888
				September 2018	6.58	6.58	6.58	6.58	6.58	---	---	6.53	6.66	---	1	5	6
				December 2018	---	---	---	---	6.81	---	---	---	---	---	---	---	---
				March 2019	---	---	---	---	6.84	---	---	---	---	---	---	---	---
MARFIN INVESTMENT GROUP (CR)				(Contract Size: 100 Securities, Physical Delivery)													
0.1698	0.1594	0.1676	3.97%	June 2018	0.161	0.172	0.161	0.169	0.169	---	---	0.170	0.183	---	291	12,725	96,149
				September 2018	---	---	---	---	0.163	---	---	---	---	---	---	---	---
				December 2018	---	---	---	---	0.163	---	---	---	---	---	---	---	---
				March 2019	---	---	---	---	0.164	---	---	---	---	---	---	---	---
MOTOR OIL (CR)				(Contract Size: 100 Securities, Physical Delivery)													
18.84	18.46	18.6	1.31%	June 2018	18.60	18.84	18.60	18.66	18.66	---	---	18.72	19.78	---	14	22	874
				September 2018	---	---	---	---	18.52	---	---	---	---	---	---	---	---
				December 2018	---	---	---	---	18.61	---	---	---	---	---	---	---	---
				March 2019	---	---	---	---	18.70	---	---	---	---	---	---	---	---
MYTILINEOS HOLDINGS (CR)				(Contract Size: 100 Securities, Physical Delivery)													
10.76	10.16	10.54	3.33%	June 2018	10.00	10.50	10.00	10.29	10.29	---	---	10.24	10.50	---	334	2,077	7,120
				September 2018	---	---	---	---	10.29	---	---	10.32	9.99	---	---	---	---
				December 2018	---	---	---	---	10.34	---	---	---	---	---	---	---	---
				March 2019	---	---	---	---	10.39	---	---	---	---	---	---	---	---
NATIONAL BANK (CR)				(Contract Size: 100 Securities, Physical Delivery)													
0.3178	0.3096	0.3176	0.57%	June 2018	0.311	0.318	0.309	0.317	0.317	---	---	0.315	0.340	---	301	22,723	146,058
				September 2018	---	---	---	---	0.319	---	---	---	---	---	---	---	---
				December 2018	---	---	---	---	0.320	---	---	---	---	---	---	---	---
				March 2019	---	---	---	---	0.322	---	---	---	---	---	---	---	---
OPAP (CR)				(Contract Size: 100 Securities, Physical Delivery)													
9.87	9.65	9.8	0.51%	June 2018	9.57	9.65	9.48	9.65	9.65	---	---	9.63	10.29	---	54	216	3,023
				September 2018	---	---	---	---	9.83	---	---	---	---	---	---	---	---
				December 2018	---	---	---	---	9.88	---	---	---	---	---	---	---	---
				March 2019	---	---	---	---	9.93	---	---	---	---	---	---	---	---
OTE (CR)				(Contract Size: 100 Securities, Physical Delivery)													
11.84	11.4	11.8	2.61%	June 2018	11.45	11.85	11.45	11.85	11.85	---	---	11.80	12.42	---	89	361	4,792
				September 2018	---	---	---	---	11.60	---	---	---	---	---	---	---	---
				December 2018	---	---	---	---	11.66	---	---	---	---	---	---	---	---
				March 2019	---	---	---	---	11.71	---	---	---	---	---	---	---	---

Underlying Asset				Derivatives Market													
Price max	Price min	Closing price	change	Delivery Month	Open price	Price max	Price min	Last price	Closing price	Last Bid	Last Ask	Settlement price	Life high	Life low	Trades	Volume	Open Interest
P.P.A. S.A. (CR)				(Contract Size: 100 Securities, Physical Delivery)													
16.78	16.22	16.78	1.08%	June 2018	16.56	16.76	16.40	16.76	16.76	---	---	16.84	17.42	---	9	10	975
				September 2018	---	---	---	---	16.74	---	---	16.65	---	16.36	---	---	---
				December 2018	---	---	---	---	16.83	---	---	---	---	---	---	---	---
				March 2019	---	---	---	---	16.91	---	---	---	---	---	---	---	---
PIRAEUS BANK (CR)				(Contract Size: 100 Securities, Physical Delivery)													
3.31	3.184	3.226	-0.62%	June 2018	3.19	3.32	3.17	3.23	3.23	---	---	3.21	3.86	---	748	5,443	19,010
				September 2018	---	---	---	---	3.27	---	---	3.20	---	3.05	---	---	2
				December 2018	---	---	---	---	3.29	---	---	---	---	---	---	---	---
				March 2019	---	---	---	---	3.31	---	---	---	---	---	---	---	---
PPC (CR)				(Contract Size: 100 Securities, Physical Delivery)													
2.932	2.894	2.904	-0.89%	June 2018	2.94	2.97	2.89	2.93	2.93	---	---	2.91	3.32	---	157	738	10,339
				September 2018	---	---	---	---	2.96	---	---	---	---	---	---	---	---
				December 2018	---	---	---	---	2.97	---	---	---	---	---	---	---	---
				March 2019	---	---	---	---	2.98	---	---	---	---	---	---	---	---
TERNA ENERGY (CR)				(Contract Size: 100 Securities, Physical Delivery)													
5.18	5.05	5.1	-0.97%	June 2018	5.13	5.18	5.09	5.11	5.11	---	---	5.11	5.40	---	52	157	7,636
				September 2018	---	---	---	---	5.19	---	---	---	---	---	---	---	---
				December 2018	---	---	---	---	5.22	---	---	---	---	---	---	---	---
				March 2019	---	---	---	---	5.24	---	---	---	---	---	---	---	---
TITAN CEMENT (CR)				(Contract Size: 100 Securities, Physical Delivery)													
21.95	21.35	21.95	1.62%	June 2018	21.35	21.92	21.35	21.92	21.92	---	---	21.70	22.20	---	23	28	586
				September 2018	---	---	---	---	21.79	---	---	21.98	---	21.20	---	---	---
				December 2018	---	---	---	---	21.90	---	---	---	---	---	---	---	---
				March 2019	---	---	---	---	22.00	---	---	---	---	---	---	---	---
VIOHALCO SA/NV (CB)				(Contract Size: 100 Securities, Physical Delivery)													
3.73	3.555	3.73	4.34%	June 2018	3.55	3.74	3.53	3.73	3.73	---	---	3.72	4.00	---	149	719	8,757
				September 2018	---	---	---	---	3.61	---	---	3.60	---	3.57	---	---	---
				December 2018	---	---	---	---	3.62	---	---	---	---	---	---	---	---
				March 2019	---	---	---	---	3.64	---	---	---	---	---	---	---	---

FTSE/Athex Large Cap

(Trade Unit: 1 Index Point x 2€ - Exercise Style: European, Cash Settlement)

Call Options																	Put Options																								
Exerise Price	April 2018							May 2018							Other Months		April 2018								May 2018							Other Months		Exerise Price							
	Open price	Price max	Price min	Last price	Closing price	Volume	Open Interest	Open price	Price max	Price min	Last price	Closing price	Volume	Open Interest	Volume	Open Interest	Open price	Price max	Price min	Last price	Closing price	Volume	Open Interest	Open price	Price max	Price min	Last price	Closing price	Volume	Open Interest	Volume	Open Interest									
1,700	-	-	-	-	-	-	-	-	-	-	-	-	-	-	-	-	-	-	-	-	-	-	-	-	-	-	-	-	-	-	-	-	1,700								
1,725	-	-	-	-	-	-	-	-	-	-	-	-	-	-	-	-	-	-	-	-	-	-	-	-	-	-	-	-	-	-	-	-	1,725								
1,750	-	-	-	-	-	-	-	-	-	-	-	-	-	-	-	-	-	-	-	-	-	-	-	-	-	-	-	-	-	-	-	-	1,750								
1,775	-	-	-	-	-	-	-	-	-	-	-	-	-	-	-	-	-	-	-	-	-	-	-	-	-	-	-	-	-	-	-	-	1,775								
1,800	-	-	-	-	-	-	-	-	-	-	-	-	-	-	-	-	-	-	-	-	-	-	-	-	-	-	-	-	-	-	-	-	1,800								
1,825	-	-	-	-	-	-	-	-	-	-	-	-	-	-	-	-	-	-	-	-	-	-	-	-	-	-	-	-	-	-	-	-	1,825								
1,850	-	-	-	-	-	-	-	-	-	-	-	-	-	-	-	-	-	-	-	-	-	-	-	-	-	-	-	-	-	-	-	-	1,850								
1,875	0.00	0.00	0.00	-	295.00	-	-	0.00	0.00	0.00	-	295.00	-	-	-	-	0.00	0.00	0.00	-	0.01	-	-	0.00	0.00	0.00	-	0.48	-	-	-	-	1,875								
1,900	0.00	0.00	0.00	-	270.00	-	-	0.00	0.00	0.00	-	271.00	-	-	-	-	0.00	0.00	0.00	-	0.01	-	-	0.00	0.00	0.00	-	0.87	-	-	-	-	1,900								
1,925	0.00	0.00	0.00	-	245.00	-	-	0.00	0.00	0.00	-	247.00	-	-	-	-	0.00	0.00	0.00	-	0.07	-	-	0.00	0.00	0.00	-	1.50	-	-	-	-	1,925								
1,950	0.00	0.00	0.00	-	220.00	-	20	0.00	0.00	0.00	-	223.00	-	20	-	-	0.00	0.00	0.00	-	0.01	-	1	2.50	2.50	2.50	2.50	2.50	3	55	-	-	1,950								
1,975	0.00	0.00	0.00	-	195.00	-	20	0.00	0.00	0.00	-	199.00	-	60	-	-	0.00	0.00	0.00	-	0.01	-	52	0.00	0.00	0.00	-	4.00	-	121	-	-	1,975								
2,000	0.00	0.00	0.00	-	170.00	-	44	0.00	0.00	0.00	-	176.00	-	80	-	-	0.00	0.00	0.00	-	0.01	-	657	6.00	6.00	5.00	5.00	5.00	2	1,401	-	-	2,000								
2,050	121.00	121.00	121.00	121.00	121.00	1	95	0.00	0.00	0.00	-	134.00	-	81	-	-	0.00	121.00	0.00	-	0.01	-	175	11.50	11.50	11.50	11.50	11.50	1	117	-	-	2,050								
2,100	81.00	84.00	81.00	84.00	84.00	6	64	0.00	0.00	0.00	-	96.50	-	167	-	-	0.00	84.00	0.00	-	0.20	-	160	23.00	26.00	21.00	22.25	22.25	132	109	-	-	2,100								
2,150	26.00	36.00	18.00	36.00	36.00	8	65	0.00	0.00	0.00	-	65.50	-	1,004	-	-	0.00	36.00	0.00	-	5.60	-	38	40.00	40.00	37.00	37.00	37.00	24	24	-	-	2,150								
2,200	0.00	0.00	0.00	-	3.40	-	539	36.00	42.00	36.00	42.00	42.00	4	66	-	-	0.00	0.00	0.00	-	33.50	-	100	0.00	0.00	0.00	-	71.50	-	-	-	-	2,200								
2,250	0.00	0.00	0.00	-	0.11	-	30	22.25	22.25	22.25	22.25	22.25	1	54	-	-	0.00	0.00	0.00	-	80.00	-	40	0.00	0.00	0.00	-	105.00	-	-	-	-	2,250								
2,300	0.00	0.00	0.00	-	0.01	-	-	0.00	0.00	0.00	-	14.00	-	-	-	-	0.00	0.00	0.00	-	130.00	-	-	0.00	0.00	0.00	-	143.00	-	-	-	-	2,300								
2,350	0.00	0.00	0.00	-	0.02	-	-	0.00	0.00	0.00	-	7.30	-	-	-	-	0.00	0.00	0.00	-	180.00	-	-	0.00	0.00	0.00	-	187.00	-	-	-	-	2,350								
2,400	0.00	0.00	0.00	-	0.02	-	-	0.00	0.00	0.00	-	3.60	-	-	-	-	0.00	0.00	0.00	-	230.00	-	-	0.00	0.00	0.00	-	233.00	-	-	-	-	2,400								
2,450	0.00	0.00	0.00	-	0.01	-	-	-	-	-	-	-	-	-	-	-	0.00	0.00	0.00	-	280.00	-	-	-	-	-	-	-	-	-	-	-	2,450								
2,500	0.00	0.00	0.00	-	0.01	-	-	-	-	-	-	-	-	-	-	-	0.00	0.00	0.00	-	330.00	-	-	-	-	-	-	-	-	-	-	-	2,500								
Totals:						15	877							5	1,532	1	5							0	1,223							162	1,827	0	0						
Number of Trades:						10						4						1						0						18						0					

ALPHA BANK (CR)

(Contract Size: 100 Securities, Exercise Style: American, Physical Delivery)

Call Options																	Put Options																
Exercise Price	April 2018							May 2018							Other Months		April 2018							May 2018							Other Months		Exercise Price
	Open price	Price max	Price min	Last price	Closing price	Volume	Open Interest	Open price	Price max	Price min	Last price	Closing price	Volume	Open Interest	Volume	Open Interest	Open price	Price max	Price min	Last price	Closing price	Volume	Open Interest	Open price	Price max	Price min	Last price	Closing price	Volume	Open Interest	Volume	Open Interest	
0.900																																	0.009
0.950																																	0.010
1.000																																	0.010
1.100																																	0.011
1.200	0.000	0.000	0.000		0.910	-	-	0.000	0.000	0.000		0.912	-	-			0.000	0.000	0.000		0.001	-	-	0.000	0.000	0.000		0.001	-	-			0.012
1.300	0.000	0.000	0.000		0.810	-	-	0.000	0.000	0.000		0.812	-	-			0.000	0.000	0.000		0.001	-	-	0.000	0.000	0.000		0.001	-	-			0.013
1.400	0.000	0.000	0.000		0.710	-	-	0.000	0.000	0.000		0.712	-	-			0.000	0.000	0.000		0.001	-	-	0.000	0.000	0.000		0.001	-	-			0.014
1.500	0.000	0.000	0.000		0.610	-	-	0.000	0.000	0.000		0.613	-	-			0.000	0.000	0.000		0.001	-	-	0.000	0.000	0.000		0.001	-	-			0.015
1.600	0.000	0.000	0.000		0.510	-	-	0.000	0.000	0.000		0.513	-	-			0.000	0.000	0.000		0.001	-	-	0.000	0.000	0.000		0.002	-	-			0.016
1.700	0.000	0.000	0.000		0.410	-	-	0.000	0.000	0.000		0.414	-	-			0.000	0.000	0.000		0.009	-	-	0.000	0.000	0.000		0.002	-	-			0.017
1.800	0.000	0.000	0.000		0.310	-	-	0.000	0.000	0.000		0.319	-	-			0.000	0.000	0.000		0.002	-	-	0.000	0.000	0.000		0.006	-	-			0.018
1.900	0.000	0.000	0.000		0.210	-	-	0.000	0.000	0.000		0.232	-	-			0.000	0.000	0.000		0.002	-	-	0.000	0.000	0.000		0.019	-	-			0.019
2.000	0.000	0.000	0.000		0.113	-	-	0.000	0.000	0.000		0.157	-	-			0.000	0.000	0.000		0.003	-	-	0.000	0.000	0.000		0.044	-	-			0.020
2.200	0.000	0.000	0.000		0.006	-	-	0.000	0.000	0.000		0.057	-	-			0.000	0.000	0.000		0.096	-	-	0.000	0.000	0.000		0.144	-	-			0.022
2.400	0.000	0.000	0.000		0.001	-	-	0.000	0.000	0.000		0.015	-	-			0.000	0.000	0.000		0.290	-	-	0.000	0.000	0.000		0.302	-	-			0.024
2.600	0.000	0.000	0.000		0.001	-	-	0.000	0.000	0.000		0.003	-	-			0.000	0.000	0.000		0.490	-	-	0.000	0.000	0.000		0.491	-	-			0.026
2.800	0.000	0.000	0.000		0.001	-	-	0.000	0.000	0.000		0.002	-	-			0.000	0.000	0.000		0.690	-	-	0.000	0.000	0.000		0.690	-	-			0.028
3.000	0.000	0.000	0.000		0.001	-	-	0.000	0.000	0.000		0.001	-	-			0.000	0.000	0.000		0.890	-	-	0.000	0.000	0.000		0.890	-	-			0.030
3.200																																	0.032
Totals:						0	0							0	0	0	0							0	0							30	30
Number of Trades:						0							0			0.00							0			1							

NATIONAL BANK (CR)

(Contract Size: 100 Securities, Exercise Style: American, Physical Delivery)

Call Options																Put Options																			
Exercise Price	April 2018							May 2018							Other Months		April 2018								May 2018								Other Months		Exercise Price
	Open price	Price max	Price min	Last price	Closing price	Volume	Open Interest	Open price	Price max	Price min	Last price	Closing price	Volume	Open Interest	Volume	Open Interest	Open price	Price max	Price min	Last price	Closing price	Volume	Open Interest	Open price	Price max	Price min	Last price	Closing price	Volume	Open Interest	Volume	Open Interest			
0.050	0.000	0.000	0.000		0.266	-	-	0.000	0.000	0.000		0.266	-	-			0.000	0.000	0.000		0.001	-	-	0.000	0.000	0.000		0.001	-	-			0.001		
0.100	0.000	0.000	0.000		0.216	-	-	0.000	0.000	0.000		0.216	-	-			0.000	0.000	0.000		0.001	-	-	0.000	0.000	0.000		0.001	-	-			0.001		
0.150	0.000	0.000	0.000		0.166	-	-	0.000	0.000	0.000		0.167	-	-			0.000	0.000	0.000		0.002	-	-	0.000	0.000	0.000		0.001	-	-			0.002		
0.200	0.000	0.000	0.000		0.116	-	-	0.000	0.000	0.000		0.122	-	-			0.000	0.000	0.000		0.001	-	-	0.000	0.000	0.000		0.005	-	-			0.002		
0.250	0.000	0.000	0.000		0.070	-	-	0.000	0.000	0.000		0.084	-	-			0.000	0.000	0.000		0.004	-	-	0.000	0.000	0.000		0.018	-	-			0.003		
0.300	0.000	0.000	0.000		0.035	-	-	0.000	0.000	0.000		0.056	-	-			0.000	0.000	0.000		0.019	-	-	0.000	0.000	0.000		0.039	-	-			0.003		
0.350	0.000	0.000	0.000		0.015	-	-	0.000	0.000	0.000		0.036	-	-			0.000	0.000	0.000		0.049	-	-	0.000	0.000	0.000		0.069	-	-			0.004		
0.400	0.000	0.000	0.000		0.005	-	-	0.000	0.000	0.000		0.022	-	-			0.000	0.000	0.000		0.089	-	-	0.000	0.000	0.000		0.106	-	-			0.004		
0.450	0.000	0.000	0.000		0.002	-	-	0.000	0.000	0.000		0.014	-	-			0.000	0.000	0.000		0.136	-	-	0.000	0.000	0.000		0.147	-	-			0.005		
0.500	0.000	0.000	0.000		0.001	-	-	0.000	0.000	0.000		0.009	-	-			0.000	0.000	0.000		0.184	-	-	0.000	0.000	0.000		0.192	-	-			0.005		
0.550	0.000	0.000	0.000		0.001	-	-	0.000	0.000	0.000		0.005	-	-			0.000	0.000	0.000		0.234	-	-	0.000	0.000	0.000		0.239	-	-			0.006		
0.600	0.000	0.000	0.000		0.002	-	-						-	-			0.000	0.000	0.000		0.284	-	-				-	-			0.006				
0.650						-	-						-	-								-	-				-	-				0.007			
Totals:						0	0						0	0	0	0						0	0					0	0	0	450				
Number of Trades:						0							0		0							0.00						0		0					

OPAP (CR)

(Contract Size: 100 Securities, Exercise Style: American, Physical Delivery)

Call Options																	Put Options																			
April 2018																	May 2018																	Other Months		
Exercise Price	Open price	Price max	Price min	Last price	Closing price	Volume	Open Interest	Open price	Price max	Price min	Last price	Closing price	Volume	Open Interest	Volume	Open Interest	Open price	Price max	Price min	Last price	Closing price	Volume	Open Interest	Open price	Price max	Price min	Last price	Closing price	Volume	Open Interest	Volume	Open Interest	Exercise Price			
6.800	0.000	0.000	0.000		2.95	-	-	0.000	0.000	0.000		2.96	-	-			0.000	0.000	0.000		0.001	-	-	0.000	0.000	0.000		0.001	-	-			0.068			
7.200	0.000	0.000	0.000		2.55	-	-	0.000	0.000	0.000		2.56	-	-			0.000	0.000	0.000		0.001	-	-	0.000	0.000	0.000		0.001	-	-			0.072			
7.600	0.000	0.000	0.000		2.15	-	-	0.000	0.000	0.000		2.16	-	-			0.000	0.000	0.000		0.001	-	-	0.000	0.000	0.000		0.001	-	-			0.076			
8.000	0.000	0.000	0.000		1.75	-	-	0.000	0.000	0.000		1.76	-	-			0.000	0.000	0.000		0.002	-	-	0.000	0.000	0.000		0.001	-	-			0.080			
8.400	0.000	0.000	0.000		1.35	-	-	0.000	0.000	0.000		1.37	-	-			0.000	0.000	0.000		0.001	-	-	0.000	0.000	0.000		0.007	-	-			0.084			
8.800	0.000	0.000	0.000		0.951	-	-	0.000	0.000	0.000		0.995	-	-			0.000	0.000	0.000		0.001	-	-	0.000	0.000	0.000		0.030	-	-			0.088			
9.200	0.000	0.000	0.000		0.551	-	-	0.000	0.000	0.000		0.660	-	-			0.000	0.000	0.000		0.005	-	-	0.000	0.000	0.000		0.095	-	-			0.092			
9.600	0.000	0.000	0.000		0.182	-	-	0.000	0.000	0.000		0.391	-	-			0.000	0.000	0.000		0.031	-	-	0.000	0.000	0.000		0.226	-	-			0.096			
10.000	0.000	0.000	0.000		0.014	-	-	0.000	0.000	0.000		0.204	-	25			0.000	0.000	0.000		0.263	-	-	0.000	0.000	0.000		0.439	-	-			0.100			
11.000	0.000	0.000	0.000		0.002	-	-	0.000	0.000	0.000		0.022	-	-			0.000	0.000	0.000		1.25	-	-	0.000	0.000	0.000		1.26	-	-			0.110			
12.000	0.000	0.000	0.000		0.001	-	-	0.000	0.000	0.000		0.001	-	-			0.000	0.000	0.000		2.25	-	-	0.000	0.000	0.000		2.25	-	-			0.120			
13.000	0.000	0.000	0.000		0.001	-	-	0.000	0.000	0.000		0.001	-	-			0.000	0.000	0.000		3.25	-	-	0.000	0.000	0.000		3.25	-	-			0.130			
14.000	0.000	0.000	0.000		0.001	-	-	0.000	0.000	0.000		0.001	-	-			0.000	0.000	0.000		4.25	-	-	0.000	0.000	0.000		4.25	-	-			0.140			
15.000	0.000	0.000	0.000		0.001	-	-	0.000	0.000	0.000		0.001	-	-			0.000	0.000	0.000		5.25	-	-	0.000	0.000	0.000		5.25	-	-			0.150			
16.000	0.000	0.000	0.000		0.001	-	-						-	-			0.000	0.000	0.000		6.25	-	-				-	-				0.160				
Totals:						0	0						0	25	0	0						0	0					0	66	0	0					
Number of Trades:						0							0		0							0.00						0		0						



OTE (CR)

(Contract Size: 100 Securities, Exercise Style: American, Physical Delivery)

Call Options																Put Options																		
Exercise Price	April 2018							May 2018							Other Months		April 2018								May 2018							Other Months		Exercise Price
	Open price	Price max	Price min	Last price	Closing price	Volume	Open Interest	Open price	Price max	Price min	Last price	Closing price	Volume	Open Interest	Volume	Open Interest	Open price	Price max	Price min	Last price	Closing price	Volume	Open Interest	Open price	Price max	Price min	Last price	Closing price	Volume	Open Interest	Volume	Open Interest		
8.000						-	-							-	-							-	-					-	-			0.080		
8.400	0.000	0.000	0.000		3.10	-	-	0.000	0.000	0.000		3.11	-	-			0.000	0.000	0.000		0.001	-	-	0.000	0.000	0.000		0.001	-	-			0.084	
8.800	0.000	0.000	0.000		2.70	-	-	0.000	0.000	0.000		2.71	-	-			0.000	0.000	0.000		0.001	-	-	0.000	0.000	0.000		0.001	-	-			0.088	
9.200	0.000	0.000	0.000		2.30	-	-	0.000	0.000	0.000		2.32	-	-			0.000	0.000	0.000		0.001	-	-	0.000	0.000	0.000		0.001	-	-			0.092	
9.600	0.000	0.000	0.000		1.90	-	-	0.000	0.000	0.000		1.92	-	-			0.000	0.000	0.000		0.001	-	-	0.000	0.000	0.000		0.002	-	-			0.096	
10.000	0.000	0.000	0.000		1.50	-	-	0.000	0.000	0.000		1.53	-	-			0.000	0.000	0.000		0.004	-	-	0.000	0.000	0.000		0.010	-	-			0.100	
11.000	0.000	0.000	0.000		0.512	-	-	0.000	0.000	0.000		0.659	-	-			0.000	0.000	0.000		0.011	-	-	0.000	0.000	0.000		0.141	-	-			0.110	
12.000	0.000	0.000	0.000		0.013	-	10	0.000	0.000	0.000		0.163	-	-			0.000	0.000	0.000		0.512	-	-	0.000	0.000	0.000		0.646	-	-			0.120	
13.000	0.000	0.000	0.000		0.001	-	15	0.000	0.000	0.000		0.022	-	-			0.000	0.000	0.000		1.50	-	-	0.000	0.000	0.000		1.51	-	-			0.130	
14.000	0.000	0.000	0.000		0.001	-	-	0.000	0.000	0.000		0.001	-	-			0.000	0.000	0.000		2.50	-	-	0.000	0.000	0.000		2.50	-	-			0.140	
15.000	0.000	0.000	0.000		0.001	-	-	0.000	0.000	0.000		0.001	-	-			0.000	0.000	0.000		3.50	-	-	0.000	0.000	0.000		3.50	-	-			0.150	
16.000	0.000	0.000	0.000		0.001	-	-	0.000	0.000	0.000		0.001	-	-			0.000	0.000	0.000		4.50	-	-	0.000	0.000	0.000		4.50	-	-			0.160	
17.000	0.000	0.000	0.000		0.001	-	-	0.000	0.000	0.000		0.001	-	-			0.000	0.000	0.000		5.50	-	-	0.000	0.000	0.000		5.50	-	-			0.170	
18.000	0.000	0.000	0.000		0.001	-	-						-	-			0.000	0.000	0.000		6.50	-	-					-	-			0.180		
Totals:						0	25						0	0	0	0						0	0					0	0	0	0			
Number of Trades:						0							0		0							0.00						0		0				

PIRAEUS BANK (CR)

(Contract Size: 100 Securities, Exercise Style: American, Physical Delivery)

Call Options																	Put Options																			
April 2018								May 2018								Other Months		April 2018								May 2018								Other Months		
Exercise Price	Open price	Price max	Price min	Last price	Closing price	Volume	Open Interest	Open price	Price max	Price min	Last price	Closing price	Volume	Open Interest	Volume	Open Interest	Open price	Price max	Price min	Last price	Closing price	Volume	Open Interest	Open price	Price max	Price min	Last price	Closing price	Volume	Open Interest	Volume	Open Interest	Exercise Price			
0.050						-	-							-	-							-	-						-	-			0.001			
0.100						-	-							-	-							-	-						-	-			0.001			
0.150						-	-							-	-							-	-						-	-			0.002			
0.200						-	-							-	-							-	-						-	-			0.002			
0.250						-	-							-	-							-	-						-	-			0.003			
0.300						-	-							-	-							-	-						-	-			0.003			
0.350						-	-							-	-							-	-						-	-			0.004			
0.400						-	-							-	-							-	-						-	-			0.004			
0.450						-	-							-	-							-	-						-	-			0.005			
0.500						-	-							-	-							-	-						-	-			0.005			
1.500						-	-							-	-							-	-						-	-			0.015			
1.600						-	-							-	-							-	-						-	-			0.016			
1.700						-	-							-	-							-	-						-	-			0.017			
1.800	0.000	0.000	0.000		1.45	-	-	0.000	0.000	0.000		1.45	-	-			0.000	0.000	0.000		0.001	-	-	0.000	0.000	0.000		0.001	-	-			0.018			
1.900	0.000	0.000	0.000		1.35	-	-	0.000	0.000	0.000		1.35	-	-			0.000	0.000	0.000		0.001	-	-	0.000	0.000	0.000		0.001	-	-			0.019			
2.000	0.000	0.000	0.000		1.25	-	-	0.000	0.000	0.000		1.25	-	-			0.000	0.000	0.000		0.001	-	-	0.000	0.000	0.000		0.001	-	-			0.020			
2.200	0.000	0.000	0.000		1.05	-	-	0.000	0.000	0.000		1.05	-	-			0.000	0.000	0.000		0.001	-	-	0.000	0.000	0.000		0.005	-	-			0.022			
2.400	0.000	0.000	0.000		0.850	-	-	0.000	0.000	0.000		0.854	-	120			0.000	0.000	0.000		0.001	-	-	0.000	0.000	0.000		0.001	-	-			0.024			
2.600	0.000	0.000	0.000		0.650	-	-	0.000	0.000	0.000		0.657	-	60			0.000	0.000	0.000		0.017	-	-	0.000	0.000	0.000		0.003	-	-			0.026			
2.800	0.000	0.000	0.000		0.450	-	-	0.000	0.000	0.000		0.470	-	-			0.000	0.000	0.000		0.008	-	-	0.000	0.000	0.000		0.016	-	-			0.028			
3.000	0.000	0.000	0.000		0.251	-	-	0.000	0.000	0.000		0.306	-	155			0.000	0.000	0.000		0.001	-	-	0.000	0.000	0.000		0.051	-	-			0.030			
3.200	0.000	0.000	0.000		0.076	-	-	0.000	0.000	0.000		0.178	-	50			0.000	0.000	0.000		0.026	-	-	0.000	0.000	0.000		0.123	-	-			0.032			
3.400	0.000	0.000	0.000		0.006	-	-	0.000	0.000	0.000		0.092	-	25			0.000	0.000	0.000		0.156	-	-	0.000	0.000	0.000		0.236	-	-			0.034			
3.600	0.000	0.000	0.000		0.001	-	-	0.000	0.000	0.000		0.041	-	-			0.000	0.000	0.000		0.350	-	-	0.000	0.000	0.000		0.386	-	-			0.036			
3.800	0.000	0.000	0.000		0.001	-	80	0.000	0.000	0.000		0.017	-	120			0.000	0.000	0.000		0.550	-	-	0.000	0.000	0.000		0.562	-	-			0.038			
4.000	0.000	0.000	0.000		0.001	-	-	0.000	0.000	0.000		0.006	-	-			0.000	0.000	0.000		0.750	-	-	0.000	0.000	0.000		0.753	-	-			0.040			
4.400	0.000	0.000	0.000		0.004	-	-	0.000	0.000	0.000		0.001	-	-			0.000	0.000	0.000		1.15	-	-	0.000	0.000	0.000		1.15	-	-			0.044			
4.800	0.000	0.000	0.000		0.001	-	-	0.000	0.000	0.000		0.001	-	-			0.000	0.000	0.000		1.55	-	-	0.000	0.000	0.000		1.55	-	-			0.048			
5.200	0.000	0.000	0.000		0.001	-	-	0.000	0.000	0.000		0.002	-	-			0.000	0.000	0.000		1.95	-	-	0.000	0.000	0.000		1.95	-	-			0.052			
5.600	0.000	0.000	0.000		0.001	-	-						-	-			0.000	0.000	0.000		2.35	-	-				-	-					0.056			
6.000						-	-						-	-								-	-					-	-				0.060			
6.400						-	-						-	-								-	-					-	-				0.064			
6.800						-	-						-	-								-	-					-	-				0.068			
7.200						-	-						-	-								-	-					-	-				0.072			
Totals:						0	80						0	530	0	0						0	0					0	0	0	0					
Number of Trades:						0							0		0							0.00					0		0							

PPC (CR)

(Contract Size: 100 Securities, Exercise Style: American, Physical Delivery)

Call Options																	Put Options																		
Exercise Price	April 2018							May 2018							Other Months			April 2018							May 2018							Other Months			Exercise Price
	Open price	Price max	Price min	Last price	Closing price	Volume	Open Interest	Open price	Price max	Price min	Last price	Closing price	Volume	Open Interest	Volume	Open Interest	Open price	Price max	Price min	Last price	Closing price	Volume	Open Interest	Open price	Price max	Price min	Last price	Closing price	Volume	Open Interest	Volume	Open Interest			
1.200						-	-							-	-							-	-						-	-				0.012	
1.300						-	-							-	-							-	-						-	-				0.013	
1.400						-	-							-	-							-	-						-	-				0.014	
1.500						-	-							-	-							-	-						-	-				0.015	
1.600	0.000	0.000	0.000		1.33	-	-							-	-		0.000	0.000	0.000		0.001	-	-					-	-					0.016	
1.700	0.000	0.000	0.000		1.23	-	-							-	-		0.000	0.000	0.000		0.001	-	-					-	-					0.017	
1.800	0.000	0.000	0.000		1.13	-	-	0.000	0.000	0.000		1.13	-	-		0.000	0.000	0.000		0.001	-	-	0.000	0.000	0.000		0.001	-	-					0.018	
1.900	0.000	0.000	0.000		1.03	-	-	0.000	0.000	0.000		1.03	-	-		0.000	0.000	0.000		0.001	-	-	0.000	0.000	0.000		0.001	-	-					0.019	
2.000	0.000	0.000	0.000		0.930	-	-	0.000	0.000	0.000		0.933	-	-		0.000	0.000	0.000		0.001	-	-	0.000	0.000	0.000		0.001	-	-					0.020	
2.200	0.000	0.000	0.000		0.730	-	-	0.000	0.000	0.000		0.734	-	-		0.000	0.000	0.000		0.001	-	-	0.000	0.000	0.000		0.001	-	-					0.022	
2.400	0.000	0.000	0.000		0.530	-	-	0.000	0.000	0.000		0.539	-	-		0.000	0.000	0.000		0.001	-	5	0.000	0.000	0.000		0.005	-	-					0.024	
2.600	0.000	0.000	0.000		0.330	-	-	0.000	0.000	0.000		0.359	-	-		0.000	0.000	0.000		0.001	-	70	0.000	0.000	0.000		0.024	-	-					0.026	
2.800	0.000	0.000	0.000		0.141	-	20	0.000	0.000	0.000		0.210	-	-		0.000	0.000	0.000		0.010	-	10	0.000	0.000	0.000		0.076	-	-					0.028	
3.000	0.000	0.000	0.000		0.025	-	185	0.000	0.000	0.000		0.107	-	-		0.000	0.000	0.000		0.095	-	-	0.000	0.000	0.000		0.172	-	-					0.030	
3.200	0.000	0.000	0.000		0.001	-	25	0.000	0.000	0.000		0.047	-	-		0.000	0.000	0.000		0.271	-	-	0.000	0.000	0.000		0.312	-	-					0.032	
3.400	0.000	0.000	0.000		0.001	-	-	0.000	0.000	0.000		0.018	-	-		0.000	0.000	0.000		0.470	-	-	0.000	0.000	0.000		0.484	-	-					0.034	
3.600	0.000	0.000	0.000		0.001	-	-	0.000	0.000	0.000		0.006	-	-		0.000	0.000	0.000		0.670	-	-	0.000	0.000	0.000		0.673	-	-					0.036	
3.800	0.000	0.000	0.000		0.001	-	-	0.000	0.000	0.000		0.002	-	-		0.000	0.000	0.000		0.870	-	-	0.000	0.000	0.000		0.870	-	-					0.038	
4.000	0.000	0.000	0.000		0.001	-	-	0.000	0.000	0.000		0.001	-	-		0.000	0.000	0.000		1.07	-	-	0.000	0.000	0.000		1.07	-	-					0.040	
4.400	0.000	0.000	0.000		0.001	-	-							-	-		0.000	0.000	0.000		1.47	-	-				-	-						0.044	
Totals:						0	230							0	0	0						0	85					0	0			0	0		
Number of Trades:						0								0		0						0.00					0				0				

Lending Products	Underlying Title	Multilateral Transactions[1]					Bilateral Transactions[2]		Stock Borrowing through OTC (volume)[3]
		Open Interest[5]	Volume(Offered)	Average Weighted	Transactions volume	Average Weighted	Transactions Volume	Average Weighte	Transactions Volume
ADMIEBOR	ADMIE (IPTO) HOLDING S.A. (CR)	---	18,216	5.31%	---	---	---	---	10,828
AEGNBOR	AEGEAN AIRLINES (CR)	500	20,592	5.31%	---	---	---	---	11,912
ALPHABOR	ALPHA BANK (CR)	1	23,311	5.31%	---	---	1,000	0.01%	14,322,802
ALMYBOR	ALUMIL (CR)	---	---	---	---	---	---	---	---
TATTBOR	ATTICA BANK S.A. (CR)	81,380	---	---	---	---	---	---	3,140
EEEBOR	CC HBC AG (CR)	1,728	4,807	5.31%	---	---	---	---	70,546
CENERBOR	CENERGY HOLDINGS (CB)	5,000	50,499	5.31%	---	---	---	---	---
ELLAKTORBOR	ELLAKTOR (CR)	10,000	73,450	5.31%	---	---	---	---	9,805
EUROBBOR	EUROBANK ERGASIAS (CR)	34,000	944	3.31%	---	---	---	---	23,563,786
EYDAPBOR	EYDAP S.A. (CR)	1,500	3,341	5.31%	---	---	---	---	32,799
FFGRPBOR	FOLLI FOLLIE (CR)	1,615	59,649	5.31%	---	---	---	---	759,836
FOYRKBOR	FOURLIS (CR)	2,700	1,519	5.31%	---	---	---	---	4,650
GEKTERNABOR	GEK TERNA (CR)	4,850	31,399	5.31%	---	---	---	---	1,293
SARBOR	GR. SARANTIS SA (CR)	680	81	5.33%	---	---	---	---	3,156
EUPROBOR	GRIVALIA PROPERTIES (CR)	400	99,074	5.31%	---	---	---	---	20,998
EXAEBOR	HELLENIC EXCHANGES-A.S.E. (CR)	3,130	490,128	3.31%	---	---	---	---	128,565
ELPEBOR	HELLENIC PETROLEUM (CR)	4,620	126,717	5.31%	120	2.65%	---	---	69,000
INTRKBOR	INTRACOM HOLDINGS (CR)	---	245,499	5.31%	---	---	---	---	---
INLOTBOR	INTRALOT (CR)	2	77,159	5.31%	---	---	---	---	21,803
BELABOR	JUMBO SA (CR)	3,624	169,612	3.31%	---	---	---	---	72,850
LAMDABOR	LAMDA DEVELOPMENT SA (CR)	14	100	5.32%	---	---	---	---	101
MIGBOR	MARFIN INVESTMENT GROUP (CR)	100,000	239,498	5.31%	---	---	---	---	744,474
MOHBOR	MOTOR OIL (CR)	2,919	39,791	5.31%	---	---	---	---	43,263
MYTILBOR	MYTILINEOS HOLDINGS (CR)	4,066	212,075	3.55%	---	---	6,000	0.01%	6,423
ETEBOR	NATIONAL BANK (CR)	150,000	967,708	5.31%	---	---	---	---	101,725,968
OPAPBOR	OPAP (CR)	5,000	125,716	5.31%	---	---	---	---	832,689
HTOBOR	OTE (CR)	6,281	60,264	5.31%	---	---	---	---	469,676
PPABOR	P.P.A. S.A. (CR)	368	2,834	5.31%	---	---	---	---	2,901
TPEIRBOR	PIRAEUS BANK (CR)	306	6,659	5.31%	---	---	---	---	16,783,929
PLAISBOR	PLAISIO COMPUTERS SA (CR)	---	---	---	---	---	---	---	---
PPCBOR	PPC (CR)	6,190	113,302	5.31%	---	---	---	---	5,417,023

Stock Lending Notes

[1] - Multilateral contracts Lending or Borrowing as per Methods 8-1, 8-2 and 8-3-3 (According to ATHEX BoD Resolution No.17)

[2] - Billateral Contracts Lending or Borrowing as per Methods 8-3-1 and 8-3-2 (According to ATHEX BoD Resolution No.20 )

[3] - The information concerning OTC Stock Borrowing Transactions is based on the statements of the Dematerialised Securities System (DSS) operators involved and refers to volumes that have been registered up until the previous working day.

[4] - Average Price (Volume weighted)

[5] - The Data concerning Open Interest before the start of trading session

Lending Products	Underlying Title	Multilateral Transactions[1]					Bilateral Transactions[2]		Stock Borrowing through OTC (volume)[3]
		Open Interest[5]	Volume(Offered)	Average Weighted	Transactions volume	Average Weighted	Transactions Volume	Average Weighted	Transactions Volume
QUALBOR	QUALITY & RELIABILITY SA (CR)	---	---	---	---	---	---	---	---
TENERGYBOR	TERNA ENERGY (CR)	1,534	33,219	5.31%	---	---	---	---	---
TITKBOR	TITAN CEMENT (CR)	1,329	206,348	5.31%	---	---	---	---	16,744
VIOBOR	VIOHALCO SA/NV (CB)	3,234	66,245	5.31%	---	---	---	---	---

Stock Lending Notes

[1] - Multilateral contracts Lending or Borrowing as per Methods 8-1, 8-2 and 8-3-3 (According to ATHEX BoD Resolution No.17)

[2] - Bilateral Contracts Lending or Borrowing as per Methods 8-3-1 and 8-3-2 (According to ATHEX BoD Resolution No.20 )

[3] - The information concerning OTC Stock Borrowing Transactions is based on the statements of the Dematerialised Securities System (DSS) operators involved and refers to volumes that have been registered up until the previous working day.

[4] - Average Price (Volume weighted)

[5] - The Data concerning Open Interest before the start of trading session

## Sectors codification for listed companies

533	-	Exploration & Production	537	-	Integrated Oil & Gas
1353	-	Commodity Chemicals	1357	-	Specialty Chemicals
1753	-	Aluminum	1755	-	Nonferrous Metals
1757	-	Steel	1775	-	General Mining
2353	-	Building Materials & Fixtures	2357	-	Heavy Construction
2723	-	Containers & Packaging	2727	-	Diversified Industrials
2733	-	Electrical Components & Equipment	2753	-	Commercial Vehicles & Trucks
2757	-	Industrial Machinery	2773	-	Marine Transportation
2777	-	Transportation Services	2791	-	Business Support Services
2797	-	Industrial Suppliers	3535	-	Distillers & Vintners
3537	-	Soft Drinks	3573	-	Farming Fishing & Plantations
3577	-	Food Products	3722	-	Durable Household Products
3726	-	Furnishings	3728	-	Home Construction
3747	-	Toys	3763	-	Clothing & Accessories
3765	-	Footwear	3767	-	Personal Products
3785	-	Tobacco	4533	-	Health Care Providers
4535	-	Medical Equipment	4577	-	Pharmaceuticals
5337	-	Food Retailers & Wholesalers	5371	-	Apparel Retailers
5373	-	Broadline Retailers	5375	-	Home Improvement Retailers
5379	-	Specialty Retailers	5553	-	Broadcasting & Entertainment
5555	-	Media Agencies	5557	-	Publishing
5751	-	Airlines	5752	-	Gambling
5753	-	Hotels	5755	-	Recreational Services
5757	-	Restaurants & Bars	5759	-	Travel & Tourism
6535	-	Fixed Line Telecommunications	6575	-	Mobile Telecommunications
7535	-	Conventional Electricity	7537	-	Alternative Electricity
7577	-	Water	8355	-	Banks
8534	-	Insurance Brokers	8536	-	Property & Casualty Insurance
8633	-	Real Estate Holding & Development	8637	-	Real Estate Services
8671	-	Industrial & Office REITs	8674	-	Diversified REITs
8675	-	Specialty REITs	8775	-	Specialty Finance
8777	-	Investment Services	8985	-	Equity Investment Instruments
9533	-	Computer Services	9535	-	Internet
9537	-	Software	9572	-	Computer Hardware
9574	-	Electronic Office Equipment	9578	-	Telecommunications Equipment
12003	-	ETF			



**ATHEX**  
*Athens Stock Exchange*

Λεωφ. Αθηνών 110 104 42 Αθήνα  
110, Athinon Ave. GR 104 42 Athens  
tel. (+30)210-33.66.800, fax (+30)210-33.66.101  
[www.athexgroup.gr](http://www.athexgroup.gr)