

18

**Ημερήσιο Δελτίο
Συναλλακτικής Δραστηριότητας**

Daily Official List
of Trading Activity

Friday, 14 September, 2018
Year: 139 Trading Day No: 176



ATHEX
Athens Stock Exchange

Disclaimer:

Hellenic Exchanges-Athens Stock Exchange S.A. endeavours to ensure that the data and other material ("Information") presented on the Daily Official List are accurate and complete, but it is not liable for any errors or omissions of data or /and for the accuracy, credibility, updating and completeness of the aforesaid information nor it has any liability arising directly or indirectly from the use of the above Information.

The Company is not liable for the accuracy of the data included in listed companies' announcements. Only the sender of such an announcement is fully and solely liable for any infringement of third party's rights from the content of such announcement. All contents of the Daily Official List are provided only for information purposes and do not constitute investment advice or solicitation to invest in securities or other products listed for trading on the Exchange.

You acknowledge and agree that the Company is the owner of any property rights related to any Information appearing on the Daily Official List including intellectual property rights copyright, trademarks, etc.

The above data are a property of the Hellenic Exchanges-Athens Exchange and are copyright protected. Users are forbidden to reproduce, modify, copy, sale, transmit or redistribute, by all reproduction means and methods, part or the whole of the above data, without reference to their source.

The commercial exploitation of these data is, also, forbidden by third parties. Hellenic Exchanges-Athens Exchange does not carry any responsibility, direct or indirect, derived from usage or accidental alteration of the above data when used by third parties.

Hellenic Exchanges – Athens Stock Exchange S.A.

110 Athinon Ave., 10442 Athens, Tel: (210) 33.66.800, Fax: (210) 32.13.938

www.athexgroup.gr

Thessalonica Stock Exchange Center (T.S.E.C)

16-18 Katouni Str., Thessalonica 546 25 Tel: (2310) 567.667, Fax: (2310) 530.545

Athex Members Guarantee Fund

14-16 Fidiou Str., Athens 106 78, Tel: (210) 33.04.682, Fax: (210) 33.04.155

Hellenic Republic Capital Market Commission

1 Kolokotroni Str. & 1 Stadiou Str., Athens 10562 Tel: (210) 33.77.100 Fax: (210) 33.77.173

Table of Contents

Section 1: Statistical Figures of Securities, Derivatives and Lending

Summary of Markets

Athex Indices

Analytic Figures for Athex Market's Boards and Categories

Trading Details by Athex Sectors and Financial Instruments (ETFs)

Top 10 best & worst performing Shares

Derivatives Summary

Section 2: Analytic Figures of Shares Transactions

Analytic Figures of Shares Transactions

Shares' Notes

Section 3: Figures of Securities Transactions

Securities Blocks Details

Shares Rights Details

Stock Borrowing

Shares Forced Sales

Forced Sales Registered Shares

Exchange Traded Funds (ETFs) Characteristics

Section 5: Bonds traded in Fixed Income Assets Market

Convertible Corporate Bonds - Regulated Market

Non Convertible Corporate Bonds - Regulated Market

Government Bonds

Treasury Bills & Zero Coupon Government Bonds

Government Bonds Traded with the Open Outcry Method

State Banks Bonds

Section 6: Additional Infos

Athex & ATHEXClear Members List

List of Stocks under Market Making operations

Section 7: Derivatives Market Analytic Figures

Index Futures

Stock Futures

Index Options

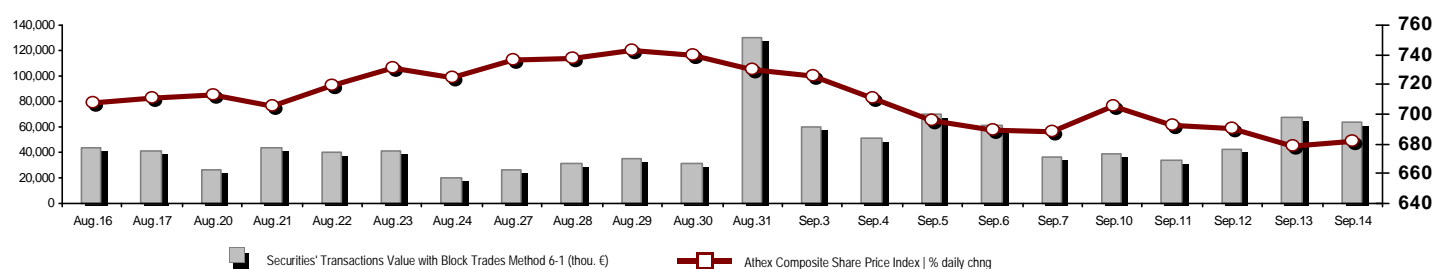
Stock Options

Stock Lending Analytic Figures

Appendix A: Sectors codification for listed companies

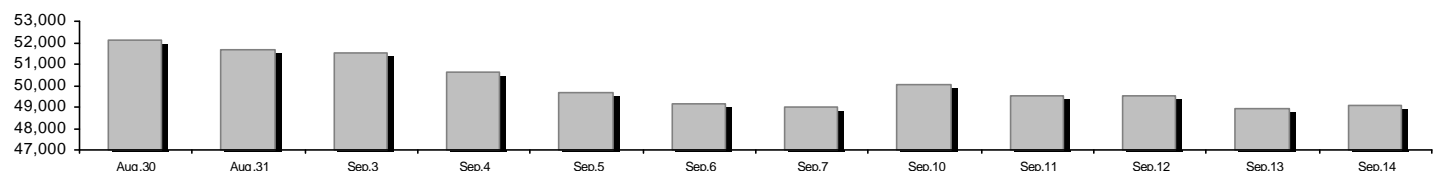
Summary of Markets

Athex Composite Share Price Index vs Shares and Derivatives Transactions Value

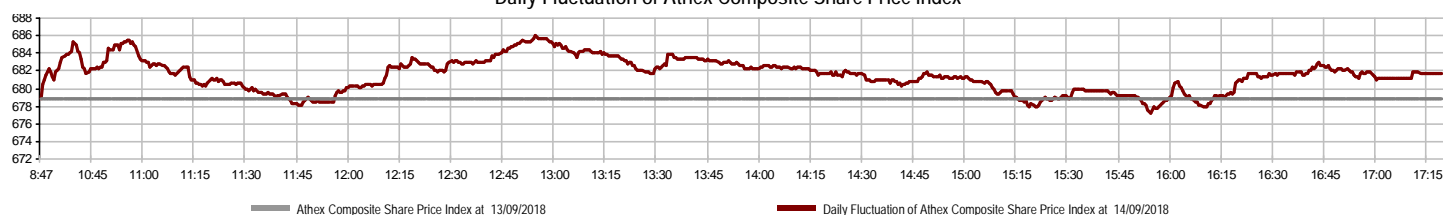


Athex Capitalisation (mill. €) **: 49,082.81	Derivatives Total Open Interest: 526,246
Daily change: mill. € %: 148.10 0.30%	in Index Futures % daily chng: 9,196 2.31%
Yearly Avg Capitalisation: mill. € % chng prev year Avg: 54,481.53 8.63%	in Stock Futures % daily chng: 507,661 4.47%
Athex Composite Share Price Index % daily chng: 681.69 0.42%	in Index Options % daily chng: 8,619 1.13%
Athex Composite Share Price Index Capitalisation (mill. €): 44,064.99	in Stock Options % daily chng: 770 28.33%
Daily change (mill. €): 128.44	
Securities' Transactions Value with Block Trades Method 6-1 (thou. €): 63,683.40	Derivatives Contracts Volume: 108,572
Daily change: %: -4,035.89 -5.96%	Daily change: pieces %: -3,534 -3.15%
YtD Avg Trans. Value: thou. € % chng prev year Avg: 57,190.55 -1.70%	YtD Avg Derivatives Contracts % chng prev year Avg: 52,811 -31.84%
Blocks Transactions Value of Method 6-1 (thou. €): 20,937.33	Derivatives Trades Number: 3,011
Blocks Transactions Value of Method 6-2 & 6-3 (thou. €): 22.78	Daily change: number %: -1,474 -32.87%
Bonds Transactions Value (thou.€): 173.13	YtD Avg Trades number % chng prev year Avg: 2,766 5.39%
Securities' Transactions Volume with Block Trades Method 6-1 (thou. pieces): 28,872.21	Lending Total Open Interest: 209,096
Daily change: thou. pieces %: -7,111.90 -19.76%	Daily change: pieces %: 20,200 10.69%
YtD Avg Volume: % chng prev year Avg: 39,466.81 -45.26%	Lending Volume (Multilateral/Bilateral): 57,200
Blocks Transactions Volume of Method 6-1 (thou. Pieces): 3,255.93	Daily change: pieces %: 26,651
Blocks Transactions Volume of Method 6-2 & 6-3 (thou. Pieces): 3.69	Multilateral Lending: 35,200
Bonds Transactions Volume: 171,000	Bilateral Lending: 22,000
Securities' Trades Number with Block Trades Method 6-1: 22,022	Lending Trades Number: 18
Daily change: number %: -8,130 -26.96%	Daily change: %: 4
YtD Avg Trades number % chng prev year Avg: 20,357 16.54%	Multilateral Lending Trades Number: 15
Number of Blocks Method 6-1: 23	Bilateral Lending Trades Number: 3
Number of Blocks Method 6-2 & 6-3: 2	
Number of Bonds Transactions: 13	

Athex Capitalisation (mill. €) **



Daily Fluctuation of Athex Composite Share Price Index



Athex Indices

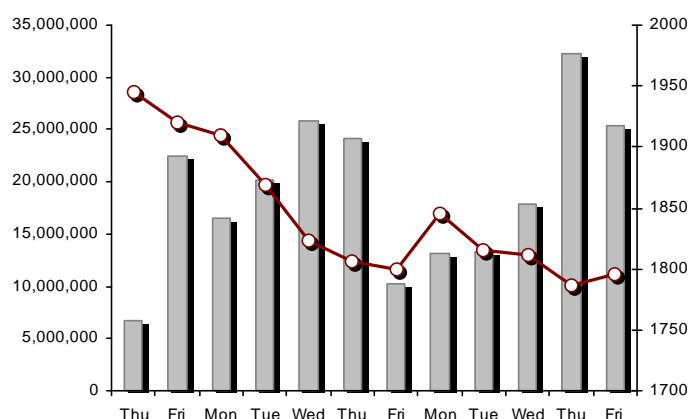
Index name	14/09/2018	13/09/2018	pts.	%	Min	Max	Year min	Year max	Year change
Athex Composite Share Price Index	681.69 #	678.83	2.86	0.42%	677.30	685.96	675.77	895.64	-15.04% €
FTSE/Athex Large Cap	1,795.87 #	1,786.86	9.01	0.50%	1,785.22	1,807.02	1,779.36	2,275.91	-13.79% €
FTSE/Athex Mid Cap Index	1,115.14 €	1,130.37	-15.23	-1.35%	1,109.65	1,135.49	1,109.65	1,417.74	-6.93% €
FTSE/ATHEX-CSE Banking Index	436.39 #	425.24	11.15	2.62%	420.97	440.68	418.23	788.88	-34.20% €
FTSE/ATHEX Global Traders Index Plus	2,190.73 #	2,187.63	3.10	0.14%	2,173.35	2,193.15	2,116.77	2,656.94	-6.36% €
FTSE/ATHEX Global Traders Index	2,053.30 €	2,062.86	-9.56	-0.46%	2,043.85	2,072.33	2,015.23	2,452.53	-5.74% €
FTSE/ATHEX Mid & Small Cap Factor-Weighted Ind	2,310.86 #	2,304.74	6.12	0.27%	2,297.49	2,318.57	1,953.64	2,464.88	18.27% #
ATHEX Mid & SmallCap Price Index	3,906.58 #	3,878.67	27.91	0.72%	3,855.26	3,909.61	3,459.89	4,442.84	12.83% #
FTSE/Athex Market Index	445.75 #	443.84	1.91	0.43%	443.21	448.61	441.99	564.78	-13.43% €
FTSE Med Index	4,510.45 #	4,505.39	5.06	0.11%			3,923.92	4,634.00	4.04% #
Athex Composite Index Total Return Index	1,077.85 #	1,073.32	4.53	0.42%	1,070.90	1,084.60	1,068.49	1,392.60	-13.60% €
FTSE/Athex Large Cap Total Return	2,603.02 #	2,589.96	13.06	0.50%			2,589.96	3,277.20	-13.77% €
FTSE/ATHEX Large Cap Net Total Return	784.70 #	780.77	3.93	0.50%	780.05	789.57	777.49	979.13	-12.44% €
FTSE/Athex Mid Cap Total Return	1,374.02 €	1,392.79	-18.77	-1.35%			1,374.02	1,702.90	-4.75% €
FTSE/ATHEX-CSE Banking Total Return Index	411.11 #	400.61	10.50	2.62%			400.61	747.83	-35.31% €
Hellenic Mid & Small Cap Index	952.49 #	950.26	2.23	0.23%	948.85	960.17	928.14	1,185.73	-7.71% €
FTSE/Athex Banks	576.58 #	561.85	14.73	2.62%	556.20	582.24	552.59	1,042.30	-34.19% €
FTSE/Athex Financial Services	919.02 #	905.73	13.29	1.47%	905.73	922.92	888.17	1,309.27	-18.34% €
FTSE/Athex Industrial Goods & Services	2,184.63 #	2,155.39	29.24	1.36%	2,154.13	2,203.73	1,987.35	2,717.62	-2.74% €
FTSE/Athex Retail	58.92 #	58.52	0.40	0.68%	57.30	58.92	51.91	2,921.52	-97.88% €
FTSE/ATHEX Real Estate	3,097.40 €	3,102.81	-5.41	-0.17%	3,089.03	3,154.69	3,004.22	3,587.02	-9.13% €
FTSE/Athex Personal & Household Goods	7,085.02 €	7,180.83	-95.81	-1.33%	7,070.03	7,241.91	7,046.07	8,843.95	-11.44% €
FTSE/Athex Food & Beverage	10,807.83 #	10,745.59	62.24	0.58%	10,745.59	10,885.55	9,316.14	11,879.29	6.45% #
FTSE/Athex Basic Resources	3,587.45 €	3,614.23	-26.78	-0.74%	3,579.08	3,639.89	3,521.95	4,731.18	-11.04% €
FTSE/Athex Construction & Materials	2,732.08 €	2,758.01	-25.93	-0.94%	2,714.70	2,797.83	2,643.74	3,244.17	-3.06% €
FTSE/Athex Oil & Gas	4,754.95 #	4,722.10	32.85	0.70%	4,632.96	4,789.86	4,087.64	5,031.64	4.98% #
FTSE/Athex Chemicals	9,009.07 €	9,140.76	-131.69	-1.44%	8,836.71	9,140.76	8,836.71	12,117.06	-21.47% €
FTSE/Athex Media	1,365.59 ~	1,365.59	0.00	0.00%	1,365.59	1,365.59	1,131.49	1,651.72	-12.50% €
FTSE/Athex Travel & Leisure	1,551.24 #	1,549.59	1.65	0.11%	1,536.57	1,568.37	1,520.34	1,962.01	-15.22% €
FTSE/Athex Technology	844.29 €	869.16	-24.87	-2.86%	835.72	869.16	823.39	1,116.72	-7.30% €
FTSE/Athex Telecommunications	2,928.73 €	2,981.03	-52.30	-1.75%	2,912.22	3,008.56	2,744.31	3,526.04	-7.48% €
FTSE/Athex Utilities	1,905.86 #	1,889.20	16.66	0.88%	1,889.20	1,914.07	1,880.85	2,508.45	-4.34% €
FTSE/Athex Health Care	380.11 #	380.07	0.04	0.01%	377.75	383.85	256.65	454.42	47.32% #
Athex All Share Index	172.82 #	172.28	0.55	0.32%	172.82	172.82	172.28	209.09	-9.16% €
Hellenic Corporate Bond Index	117.20 €	117.32	-0.12	-0.10%			116.16	118.41	0.22% #
Hellenic Corporate Bond Price Index	97.59 €	97.70	-0.11	-0.11%			97.40	100.55	-2.36% €

Note 1: FTSE/Med 100, Hellenic Corporate Bond Price Index and Hellenic Corporate Bond Index closing prices refer to the previous trading day of 12/09/2018.

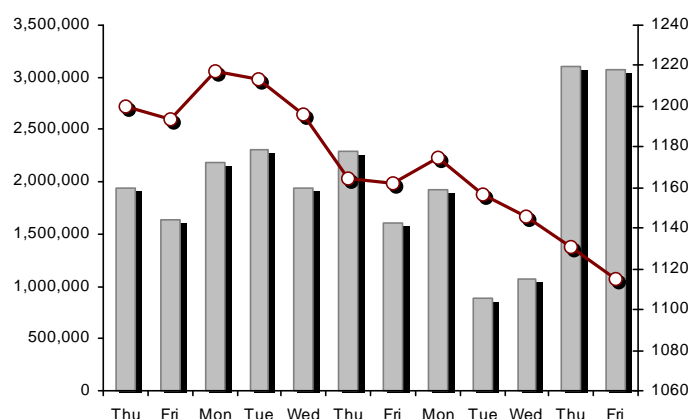
Note 2: The Hellenic Mid & Small Cap Index is a Customized index calculated by the Athens Exchange.

Athex Indices

FTSE/Large Cap

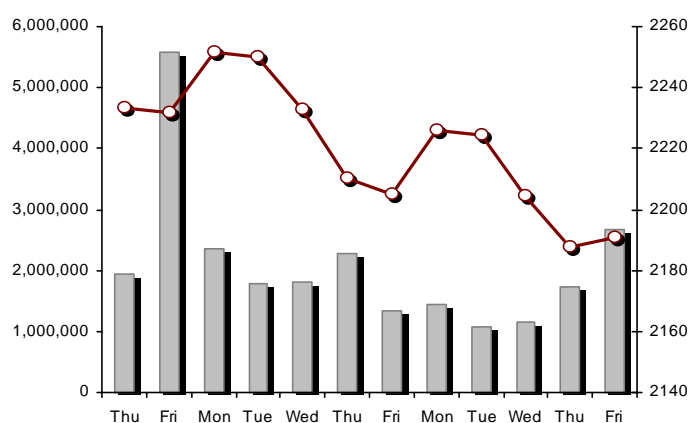


14/09/2018: 0.50% FTSE/Athex Mid Cap Index



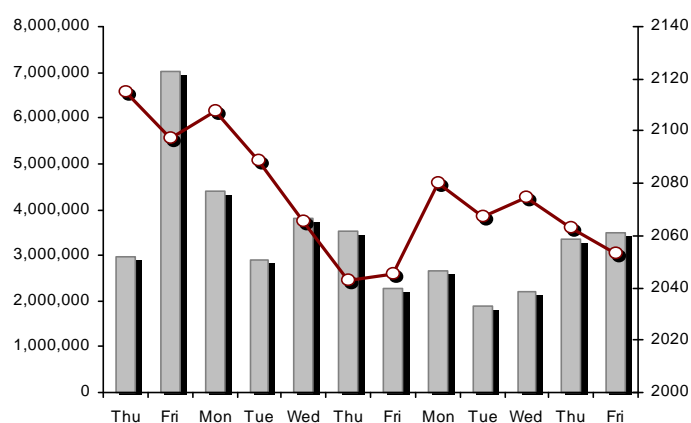
14/09/2018: -1.35%

FTSE/ATHEX Global Traders Index Plus



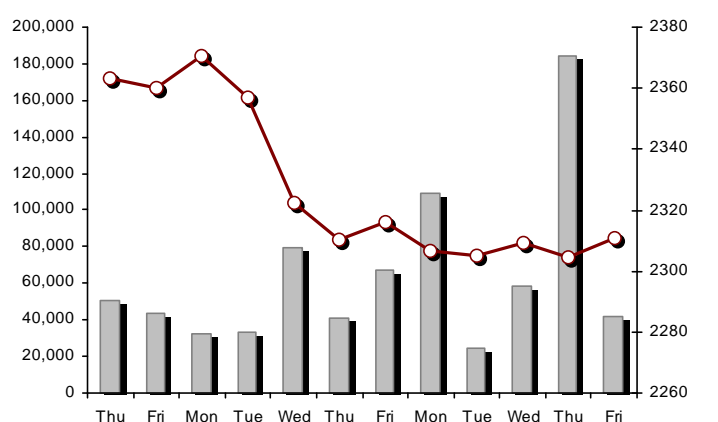
14/09/2018: 0.14%

FTSE/ATHEX Global Traders Index



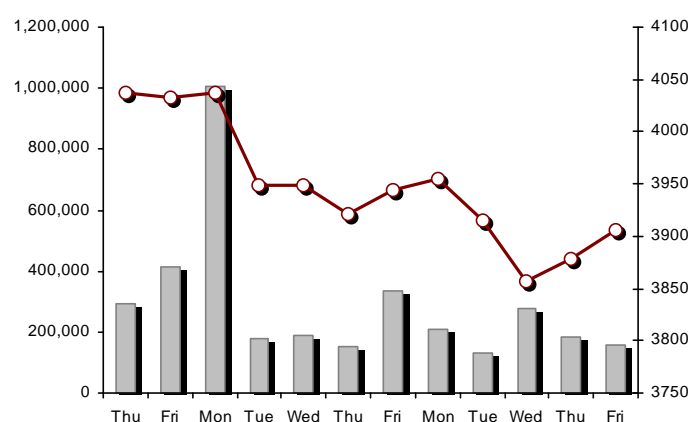
14/09/2018: -0.46%

FTSE/ATHEX Mid & Small Cap Factor-Weighted Index



14/09/2018: 0.27%

ATHEX Mid & SmallCap Price Index



14/09/2018: 0.72%

Indices volume of transactions

Indices closing prices

Analytic Figures for Athex Market's Boards and Categories

	Total Traded Securities	Main Market	Surveillance	Exchange Traded Funds (ETFs)
Totals	120	108	11	1
Gain / Lose / Same:	48 / 42 / 30	46 / 34 / 28	2 / 7 / 2	0 / 1 / 0
Athex Capitalisation (mill. €) **	49,082.81	48,868.81	214.00	
Daily Average Trans/ons Value(thou.€)	57,190.55	57,176.33	37.75	50.68
Transactions Value	63,706.19	63,690.87	12.22	3.09
Main Board:	42,746.07	42,730.76	12.22	3.09
Blocks Board 6_2_3:	20,960.11	20,960.11	0.00	0.00
Forced Sales Board:	0.00	0.00	0.00	0.00
Special Terms Board:	0.00	0.00	0.00	0.00
Daily Average Transactions Volume	39,466,811	39,268,198	241,757	2,428
Transactions Volume	28,875,893	28,758,659	117,062	172
Main Board:	25,616,282	25,499,048	117,062	172
Blocks Board 6_2_3:	3,259,611	3,259,611	0	0
Forced Sales Board:	0	0	0	0
Special Terms Board:	0	0	0	0
Daily Average Number of Trades	20,357	20,256	101	2
Number of Trades	22,024	21,944	78	2
Main Board:	21,999	21,919	78	2
Blocks Board 6_2_3:	25	25	0	0
Forced Sales Board:	0	0	0	0
Special Terms Board:	0	0	0	0

Trading Details by Athex Sectors and Financial Instruments (ETFs)

Code	Sectors	Gain / Lose / Same	Number of Trades	Transactions Volume	Transactions Value	% of Total Trans. Value
8300	- Banks	4 / 1 / 1	10,892	22,258,005	23,449,551.66	36.81%
1700	- Basic Resources	2 / 3 / 1	157	82,466	114,924.86	0.18%
1300	- Chemicals	0 / 2 / 3	64	18,048	27,670.55	0.04%
2300	- Construction & Materials	2 / 8 / 3	1,234	474,376	2,017,300.29	3.17%
12000	- Financial Instruments	0 / 1 / 0	2	172	3,094.40	0.00%
8700	- Financial Services	2 / 1 / 0	486	1,211,408	247,664.30	0.39%
3500	- Food & Beverage	4 / 7 / 3	142	53,529	272,223.84	0.43%
4500	- Health Care	1 / 1 / 1	71	430,030	379,411.55	0.60%
2700	- Industrial Goods & Services	9 / 4 / 3	1,094	423,885	2,092,564.41	3.28%
8500	- Insurance	0 / 0 / 1	1	5	17.00	0.00%
5500	- Media	0 / 0 / 0	---	---	---	---
500	- Oil & Gas	1 / 1 / 0	1,466	1,196,345	22,802,712.09	35.79%
3700	- Personal & Household Goods	3 / 3 / 5	911	151,821	2,362,765.28	3.71%
8600	- Real Estate	5 / 1 / 2	926	238,330	1,427,661.63	2.24%
5300	- Retail	1 / 1 / 0	22	3,122	6,482.92	0.01%
9500	- Technology	5 / 3 / 4	566	211,265	268,205.74	0.42%
6500	- Telecommunications	0 / 1 / 0	701	325,778	3,480,036.65	5.46%
5700	- Travel & Leisure	3 / 4 / 3	1,821	1,283,227	3,365,177.55	5.28%
7500	- Utilities	6 / 0 / 0	1,468	514,081	1,388,721.24	2.18%

Top 10 best & worst performing Shares

Main Market					
With positive Price change	Closing price	change	With negative Price change	Closing price	change
INTRACOM CONSTR. (CR)	1.37	4.58% #	INTRACOM HOLDINGS (CR)	1.15	-6.96% ⚡
PLAISIO COMPUTERS SA (CR)	4	4.44% #	INTRALOT (CR)	0.57	-5.00% ⚡
ALPHA BANK (CR)	1.276	4.16% #	J & P - AVAX SA (CR)	0.397	-3.52% ⚡
EKTER SA (CR)	1.07	3.88% #	ATTICA BANK S.A. (CR)	0.1754	-3.31% ⚡
PIRAEUS BANK (CR)	1.949	3.67% #	TPA SA (CR)	24.4	-2.79% ⚡
PROFILE SA (CR)	1.275	3.66% #	JUMBO SA (CR)	12.62	-2.02% ⚡
BRIQ PROPERTIES (CR)	1.95	3.45% #	THRACE PLASTICS SA (CR)	2.13	-1.84% ⚡
ELVALHALCOR (CB)	1.395	3.33% #	OTE (CR)	10.64	-1.75% ⚡
AEGEAN AIRLINES (CR)	7.77	2.64% #	GEK TERNA (CR)	4.77	-1.65% ⚡
KARATZIS SA (CR)	6.85	2.24% #	ELLAKTOR (CR)	1.628	-1.57% ⚡
With the highest Transactions Value	Value (thou. €)	change	With the highest Transactions Volume	Volume	change
MOTOR OIL (CR)	22,497.82	1.23% #	EUROBANK ERGASIAS (CR)	10,887,004	1.68% #
ALPHA BANK (CR)	7,726.51	4.16% #	ALPHA BANK (CR)	6,210,786	4.16% #
EUROBANK ERGASIAS (CR)	6,612.11	1.68% #	NATIONAL BANK (CR)	3,206,062	0.46% #
NATIONAL BANK (CR)	5,629.12	0.46% #	PIRAEUS BANK (CR)	1,796,094	3.67% #
OTE (CR)	3,480.04	-1.75% ⚡	MARFIN INVESTMENT GROUP (CR)	1,179,663	-1.33% ⚡
PIRAEUS BANK (CR)	3,441.83	3.67% #	MOTOR OIL (CR)	1,154,406	1.23% #
OPAP (CR)	2,556.10	0.00% ↘	INTRALOT (CR)	912,506	-5.00% ⚡
MYTILINEOS HOLDINGS (CR)	1,452.65	1.89% #	HYGEIA SA (CR)	405,997	0.68% #
JUMBO SA (CR)	1,188.24	-2.02% ⚡	OTE (CR)	325,778	-1.75% ⚡
KARELIA TOBACCO CO. SA (CB)	922.20	1.50% #	OPAP (CR)	284,318	0.00% ↘

Note: Stocks that are not included in the "Low Dispersion" and "Under Supervision" categories, and the transactions value is more than 10,000 €.

Derivatives Summary

	Number of Trades	Volume	Open Interest
Index Futures	269	1,666	9,196
FTSE/Athex Large Cap	269	1,666	9,196
Stock Futures	2,714	106,484	507,661
ADMIE (IPTO) HOLDING S.A. (CR)	62	3,715	8,990
ALPHA BANK (CR)	663	18,972	41,646
ATTICA BANK S.A. (CR)	1	1	637
CC HBC AG (CR)	14	57	293
CENERGY HOLDINGS (CB)	9	62	4,665
ELLAKTOR (CR)	28	861	3,970
EUROBANK ERGASIAS (CR)	438	10,423	47,254
EYDAP S.A. (CR)	17	57	763
FOLLI FOLLIE (CR)	0	0	1,740
FOURLIS (CR)	7	11	233
GEK TERNA (CR)	77	436	6,581
GRIVALIA PROPERTIES (CR)	3	45	212
HELLENIC EXCHANGES-A.S.E. (CR)	6	15	780
HELLENIC PETROLEUM (CR)	18	119	3,167
INTRACOM HOLDINGS (CR)	9	49	3,850
INTRALOT (CR)	50	1,488	6,705
JUMBO SA (CR)	15	72	1,059
LAMDA DEVELOPMENT SA (CR)	38	180	2,286
MARFIN INVESTMENT GROUP (CR)	70	21,942	56,397
MOTOR OIL (CR)	60	174	756
MYTILINEOS HOLDINGS (CR)	71	455	7,404
NATIONAL BANK (CR)	402	37,775	254,563
OPAP (CR)	38	799	4,082
OTE (CR)	51	400	2,672
P.P.A. S.A. (CR)	11	541	748
PIRAEUS BANK (CR)	287	3,884	19,589
PPC (CR)	112	886	12,554
TERNA ENERGY (CR)	39	161	7,113
TITAN CEMENT (CR)	25	38	201
VIOHALCO SA/NV (CB)	93	2,866	6,751
Index Options	22	252	8,619
FTSE/Athex Large Cap	22	252	8,619
Stock Options	6	170	770
ALPHA BANK (CR)	3	70	250
NATIONAL BANK (CR)	1	60	170
OPAP (CR)	0	0	5
OTE (CR)	0	0	20
PIRAEUS BANK (CR)	0	0	120
PPC (CR)	2	40	205
Total Derivatives Traded	3,011	108,572	526,246

Number of Outstanding Securities	Nominal Value	Dividends [1]			Date of Last Coupon		Note	Shares	Closing price	% change	Previous closing price/date	Open price	Price min	Price max	Last price	Avg price	Last Bid [7]	Last Ask [7]	P/E after	Year	Volume	Trades	Transactions Value[8]	Company Mkt Value (thou. €)	Year low	Year high	Sector[4]		
		2015	2016	2017	Dividend [2]	Right																							
Main Market - High Liquidity Class																													
1,543,699,381	0.300	---	---	---	07/04/2008	18/04/2017	---	ALPHA BANK (CR)	1.276	4.16 #	1.225	13/09/2018	1.225	1.212	1.283	1.276	1.244	1000@1.28	20000@1.28	---	---	6,210,786	3,702	7,726,511.89	1,969,760.41	1.199	2.252	8355	
461,254,013	0.300	---	---	---	04/06/2008	30/04/2018	---	ATTICA BANK S.A. (CR)	0.1754	-3.31 €	0.181	13/09/2018	0.182	0.175	0.182	0.1754	0.178	307@0.175	50000@0.179	---	---	157,188	136	27,927.09	80,903.95	0.175	0.5071	8355	
190,162,681	---	---	---	---	---	07/12/2016	---	CENERGY HOLDINGS (CB)	1.118	---	↘	1.118	13/09/2018	1.1	1.1	1.146	1.118	1.123	788@1.11	920@1.12	---	---	49,862	53	56,015.35	212,601.88	1.07	1.6	2727
784,500	10.00	---	---	---	---	31/07/2018	---	CNL CAPITAL (CR)	10.29	0.04 #	10.29	13/09/2018	10.3	10.2	10.3	10.29	10.208	300@10.13	200@10.29	---	---	1,101	3	11,239.30	8,072.51	10.04	10.44	8775	
371,365,550	6.70	0.4	0.44	0.54	28/06/2018	29/04/2013	---	CC HBC AG (CR)	29.01	0.59 #	28.84	13/09/2018	29.15	28.86	29.22	29.01	29.057	10@28.87	10@29.07	---	---	8,921	62	259,216.59	10,773,314.61	24.93	31.9	3537	
51,643,688	0.910	---	---	---	21/06/2010	24/07/2018	---	FOURLIS (CR)	5.48	0.55 #	5.45	13/09/2018	5.54	5.34	5.54	5.48	5.458	112@5.40	404@5.48	---	---	25,355	148	138,382.15	283,007.41	5.16	6.26	3722	
101,260,000	2.13	0.3134	0.1902	0.3646	23/03/2018	08/01/2014	---	GRIVALIA PROPERTIES (CR)	8.08	-0.98 €	8.16	13/09/2018	8.16	8.08	8.34	8.08	8.193	300@8.08	2515@8.13	36.03	2016	66,257	227	542,857.18	818,180.80	8.08	9.65	8675	
66,500,000	1.00	---	---	---	03/07/2007	11/09/2018	---	INTRACOM HOLDINGS (CR)	1.15	-6.96 €	0.618	# 10/09/2018	1.18	1.116	1.18	1.15	1.14	1140@1.14	18701@1.15	---	---	170,083	402	193,963.35	76,475.00	1.064	1.966	9578	
136,059,759	0.880	---	0.36	0.36	26/03/2018	05/03/2014	---	JUMBO SA (CR)	12.62	-2.02 €	12.88	13/09/2018	12.94	12.6	12.94	12.62	12.76	2905@12.64	3377@12.72	20.82	2016	93,125	572	1,188,237.80	1,717,074.16	12.52	16.4	3747	
79,721,775	0.300	---	---	---	30/05/2007	23/06/2014	---	LAMDA DEVELOPMENT SA (CR)	6.74	1.35 #	6.65	13/09/2018	6.65	6.53	6.82	6.74	6.684	165@6.67	1926@6.74	---	---	127,577	620	852,749.15	537,324.76	5.76	7.52	8633	
939,510,748	0.300	---	---	---	26/04/2007	29/08/2014	---	MARFIN INVESTMENT GROUP (CR)	0.0888	-1.33 €	0.09	13/09/2018	0.09	0.0883	0.092	0.0888	0.089	44300@0.089	2000@0.089	---	---	1,179,663	323	105,554.89	83,428.55	0.0878	0.1836	8775	
259,189,761	---	---	---	---	---	26/02/2016	---	VIOHALCO SA/NV (CB)	2.91	0.34 #	2.9	13/09/2018	2.925	2.89	3.005	2.91	2.961	2500@2.90	900@2.92	---	---	173,705	250	514,400.79	754,242.20	2.67	4	2727	
232,000,000	2.12	---	---	---	24/08/2018	19/06/2017	---	ADMIE (IPTO) HOLDING S.A. (CR)	1.56	0.65 #	1.55	13/09/2018	1.578	1.55	1.578	1.56	1.558	39087@1.56	621@1.57	8.39	2017	88,893	164	138,533.78	361,920.00	1.52	2.28	7535	
71,417,100	0.650	0.7	0.4	0.55	22/05/2018	27/06/2014	---	AEGEAN AIRLINES (CR)	7.77	2.64 #	7.57	13/09/2018	7.6	7.52	7.78	7.77	7.613	200@7.62	127@7.77	---	---	33,757	241	256,991.59	554,910.87	7.4	9.59	5751	
103,423,291	0.570	---	---	---	01/08/2011	19/04/2016	---	GEK TERNA (CR)	4.77	-1.65 €	4.85	13/09/2018	4.89	4.77	4.965	4.77	4.865	600@4.76	1000@4.79	---	---	171,435	399	834,003.96	493,329.10	4.415	5.64	2357	
232,000,000	2.48	---	---	---	20/07/2015	12/12/2001	---	PPC (CR)	1.44	0.21 #	1.437	13/09/2018	1.467	1.429	1.472	1.44	1.45	2200@1.44	3525@1.45	---	---	279,827	488	405,815.11	334,080.00	1.429	3.35	7535	
914,715,153	3.00	---	---	---	16/05/2008	29/08/2018	---	NATIONAL BANK (CR)	1.75	0.46 #	1.742	13/09/2018	1.76	1.69	1.794	1.75	1.756	100@1.75	10000@1.76	---	---	3,206,062	2,344	5,629,115.71	1,600,751.52	1.672	3.55	8355	
177,001,313	1.03	---	---	---	05/07/2011	20/12/2007	---	ELLAKTOR (CR)	1.628	-1.57 €	1.654	13/09/2018	1.676	1.62	1.69	1.628	1.643	1006@1.63	4943@1.64	---	---	74,574	213	122,540.37	288,158.14	1.48	2.155	2357	
60,348,000	0.690	0.1026	0.065	0.0502	05/06/2018	06/08/2018	---	HELLENIC EXCHANGES-A.S.E. (CR)	4.3	2.14 #	4.21	13/09/2018	4.26	4.22	4.305	4.3	4.271	18@4.26	1111@4.30	---	---	30,644	160	130,870.11	259,496.40	4.12	5.87	8777	
305,635,185	2.18	---	---	0.4	02/07/2018	01/10/2003	---	HELLENIC PETROLEUM (CR)	7.17	-0.69 €	7.22	13/09/2018	7.2	7.15	7.39	7.17	7.27	145@7.18	100@7.29	---	---	41,939	311	304,895.73	2,191,404.28	6.6	8.88	537	
106,500,000	0.600	0.31	0.11	0.2	22/06/2018	28/01/2000	---	EYDAP S.A. (CR)	5.28	1.93 #	5.18	13/09/2018	5.16	5.14	5.3	5.28	5.219	113@5.22	123@5.27	---	---	25,720	278	134,238.04	562,320.00	5.1	6.97	7577	
156,961,721	0.300	---	---	---	30/05/2013	14/11/2007	---	INTRALOT (CR)	0.57	-5.00 €	0.6	13/09/2018	0.6	0.55	0.617	0.57	0.581	4100@0.551	2374@0.570	---	---	912,506	753	530,453.15	89,468.18	0.55	1.512	5752	
110,782,980	0.750	0.65	0.9	1.3	26/06/2018	04/11/2013	---	MOTOR OIL (CR)	20.6	1.23 #	20.35	13/09/2018	19.84	19.84	20.7	20.6	19.489	2719@20.45	9426@20.60	---	---	1,154,406	1,155	22,497,816.36	2,282,129.39	16.88	21	533	
142,891,161	0.970	---	---	0.32	11/06/2018	07/07/2017	---	MYTILINEOS HOLDINGS (CR)	8.65	1.89 #	8.49	13/09/2018	8.58	8.52	8.69	8.65	8.639	730@8.64	68@8.65	---	---	168,160	660	1,452,650.58	1,236,008.54	7.62	10.76	2727	
25,000,000	2.00	0.1114	0.0892	0.1712	19/07/2018	08/08/2003	---	P.P.A. S.A. (CR)	16.2	1.89 #	15.9	13/09/2018	16.38	15.92	16.4	16.2	16.162	7@16.00	172@16.20	35.87	2017	575	34	9,293.02	405,000.00	15.44	17.7	2777	
319,000,000	0.300	0.7	0.72	0.4	07/05/2018	25/04/2001	---	OPAP (CR)	9	---	↘	9	13/09/2018	9.09	8.92	9.09	9	8.99	7607@9.00	1000@9.02	---	---	284,318	742	2,556,102.76	2,871,000.00	8.72	11.15	5752
490,150,389	2.83	0.1	0.16	0.3529	28/06/2018	18/06/1998	---	OTE (CR)	10.64	-1.75 €	10.83	13/09/2018	10.83	10.56	10.93	10.64	10.682	250@10.62	3000@10.70	---	---	325,778	701	3,480,036.65	5,215,200.14	9.97	12.81	6535	
436,659,164	6.00	---	---	---	16/05/2008	31/07/2017	---	PIRAEUS BANK (CR)	1.949	3.67 #	1.88	13/09/2018	1.9	1.832	1.97	1.949	1.916	211@1.94	435@1.95	---	---	1,796,094	1,710	3,441,830.81	851,048.71	1.832	3.934	8355	
69,877,484	0.780	(0.08)	(0.0875)	(0.14)	24/05/2018	13/06/2018	---	GR. SARANTIS S.A. (CR)	6.9	0.88 #	6.84	13/09/2018	6.92	6.9	7.04	6.9	6.929	2803@6.90	500@7.00	---	---	14,576	99	100,992.02	482,154.64	6.325	8.275	3767	
113,918,936	0.300	0.0935	0.0939	0.0419	10/01/2018	02/07/2018	---	TERNA ENERGY (CR)	6.27	0.48 #	6.24	13/09/2018	6.21	6.21	6.29	6.27	6.258	1438@6.26	50@6.28	---	---	110,240	506	689,846.35	714,271.73	4.4	6.29	7537	
1,524,000	0.300	---	---	---	06/07/2007	06/02/2013	---	GIRAKIAN PROFIL SA (CB)	1.49	-3.25 €	1.54	13/09/2018	1.98	1.49	1.98	1.49	1.559	1520@1.08	124@1.49	4.85	2017	40	9	62.36	2,270.76	0.044	2	1757	
77,063,568	3.45	0.3099	0.1049	0.0527	25/06/2018	26/06/2018	---	TITAN CEMENT (CR)	19.94	-0.55 €	20.05	13/09/2018	20.25	19.64	20.3	19.94	19.882	20@19.74	500@19.96	---	---	41,125	260	817,636.91	1,660,778.49	18.9	25.35	2353	
2,185,998,765	0.300	---	---	---	02/05/2008	27/11/2015	---	EUROBANK ERGASIAS (CR)	0.605	1.68 #	0.595	13/09/2018	0.6095	0.5965	0.623	0.605	0.607	1000@0.605	487174@0.610	---	---	10,887,004	2,965	6,612,112.06	1,322,529.25	0.595	1.058	8355	

Main Market - Medium Liquidity Class

13,126,020	0.560	---	---	---	08/07/2010	07/09/2018	---	AS COMPANY SA (CR)	2.32	0.87 #	2.3	13/09/2018	2.3	2.24	2.32	2.32	2.3	754@2.30	983@2.32	---	---	---	---	2,772	17	6,376.72	30,452.37	1.58	2.44	5379	
12,213,750	0.320	0.85	0.85	1.1	17/05/2018	22/11/2013	---	AUTOHELLAS SA (CR)	22	---	↘	22	13/09/2018	22.2	21.8	22.2	22	21.913	5@21.80	846@22.00	---	---	---	---	456	10	9,992.40	268,702.50	21	26	5759
11,921,531	2.33	---	---	0.035	24/04/2018	31/07/2017	---	BRIQ PROPERTIES (CR)	1.95	3.45 #	1.885	13/09/2018	1.88	1.85	1.95	1.95	1.905	5000@1.95	500@1.98	10.37	2017	---	---	11,868	42	22,606.89	23,246.99	1.72	2.1	8671	

Number of Outstanding Securities	Nominal Value	Dividends [1]			Date of Last Coupon		Note	Shares	Closing price	% change	Previous closing price/date	Open price	Price min	Price max	Last price	Avg price	Last Bid [7]	Last Ask [7]	P/E after	Year	Volume	Trades	Transactions Value[8]	Company Mkt Value (thou. €)	Year low	Year high	Sector[4]
		2015	2016	2017	Dividend [2]	Right																					
101,123,806	0.360	---	---	---	22/07/2010	28/06/2011	---	CENTRIC HOLDINGS (CR)	0.119	1.28 #	0.118 13/09/2018	0.12	0.115	0.12	0.119	0.118	25@0.115	4000@0.119	---	---	38,900	37	4,605.89	12,033.73	0.101	0.209	5752
9,907,500	0.300	---	---	---	06/10/2005	13/02/2002	---	CPI SA (CR)	0.22	---	0.22 13/09/2018	0.22	0.22	0.22	0.22	0.22	20@0.220	---	63.00	2017	1,500	2	330.00	2,179.65	0.122	0.36	9572
11,720,024	0.540	---	---	---	21/08/2014	01/08/2018	---	FLEXOPACK SA (CR)	7.2	3.60 #	6.95 13/09/2018	7.1	7.1	7.4	7.4	7.2	1050@6.50	200@7.15	---	---	80	3	576.00	84,384.17	5.35	7.4	2723
20,578,374	0.620	0.07	0.07	0.1	08/06/2018	18/05/2015	---	INFORM P. LYKOS SA (CR)	0.846	---	0.846 13/09/2018	0.846	0.806	0.846	0.846	0.821	1199@0.806	195@0.844	---	---	160	5	131.36	17,409.30	0.738	0.998	2791
10,500,000	4.00	---	0.28	0.31	05/06/2018	02/08/2016	---	INTERCONTINENTAL (CR)	5.15	---	5.15 13/09/2018	---	---	---	---	---	1100@5.10	199@5.25	8.65	2016	---	---	---	54,075.00	4.7	6.1	8674
30,477,156	0.300	---	---	---	12/08/2008	17/10/2017	---	INTRACOM CONSTR. (CR)	1.37	4.58 #	1.31 13/09/2018	1.31	1.31	1.37	1.37	1.331	1000@1.35	1075@1.37	---	---	21,719	55	28,917.17	41,753.70	0.88	1.6	2357
77,654,850	0.580	---	---	---	01/07/2011	21/02/2003	---	J & P - AVAX SA (CR)	0.397	-3.52	0.412 13/09/2018	0.418	0.397	0.418	0.397	0.403	195@0.399	1000@0.406	---	---	36,010	71	14,519.59	30,828.98	0.397	1.05	2357
468,700	1	0.73	0.73	24/08/2017	21/05/2004	---	---	MERMEREN KOMB. A.D. PR. (GDR)	41.3	-1.67	42 13/09/2018	39.2	39.2	41.8	41.4	41.292	52@40.50	27@41.40	1.82	2017	133	10	5,491.90	19,357.31	14.8	47.5	1775
10,500,000	0.950	---	---	---	24/06/2008	30/06/2017	---	MEVACO SA (CR)	0.95	---	0.95 13/09/2018	---	---	---	---	---	3000@0.950	1200@0.980	---	2017	---	---	---	9,975.00	0.93	1.15	2757
6,200,000	0.500	---	---	---	22/06/2010	01/11/1995	---	MINERVA KNITWEAR SA (CB)	0.266	---	0.266 13/09/2018	---	---	---	---	---	---	1600@0.342	---	---	---	---	---	1,649.20	0.157	0.432	3763
12,417,000	0.310	---	---	---	28/07/2008	28/08/2017	---	MLS MULTIMEDIA SA (CR)	4.32	0.47 #	4.3 13/09/2018	4.24	4.24	4.32	4.32	4.311	150@4.22	205@4.27	29.34	2017	339	10	1,461.52	53,641.44	3.99	4.6	9537
3,953,090	0.300	0.11	0.2	0.16	30/08/2018	05/12/2012	---	PAPERPACK (CR)	3.4	0.59 #	3.38 13/09/2018	3	3	3.4	3.4	3.178	500@3.08	1285@3.40	9.63	2017	205	8	651.44	13,440.51	2.2	3.7	2723
11,812,193	0.470	---	---	---	29/05/2018	15/11/2006	---	PROFILE SA (CR)	1.275	3.66 #	1.23 13/09/2018	1.24	1.21	1.275	1.275	1.236	1500@1.23	255@1.28	---	---	15,555	44	19,224.81	15,060.55	0.7	1.625	9533
27,345,120	0.470	---	---	---	18/07/2005	26/02/2014	---	QUALITY & RELIABILITY SA (CR)	0.232	0.87 #	0.23 13/09/2018	0.23	0.23	0.239	0.232	0.232	1380@0.220	1894@0.232	---	---	703	8	162.85	6,344.07	0.193	0.365	9533
11,913,632	0.680	---	---	---	05/09/2008	08/11/2017	---	QUEST HOLDINGS (CR)	13.5	1.12 #	13.35 13/09/2018	13.4	13.2	13.55	13.5	13.42	40@13.35	100@13.60	---	---	2,204	19	29,578.15	160,834.03	9.3	13.8	9533
6,456,530	1.08	---	---	---	04/07/2018	02/08/2010	---	SPACE HELLAS SA (CR)	5.2	-5.45	5.5 13/09/2018	5.1	5.1	5.45	5.45	5.217	50@5.15	190@5.45	---	---	90	3	469.50	33,573.96	3.6	7.25	9578
3,125,463	0.300	---	---	---	16/11/1992	07/02/2017	---	UNIBIOS (CR)	0.426	-2.29	0.436 13/09/2018	0.379	0.379	0.427	0.426	0.4	2000@0.392	280@0.426	---	---	1,053	9	421.39	1,331.45	0.363	0.82	2353
22,016,250	0.370	---	---	---	15/07/2009	11/05/2000	---	ALUMIL (CR)	0.216	---	0.216 13/09/2018	0.216	0.216	0.216	0.216	0.216	700@0.210	700@0.216	---	---	100	2	21.60	4,755.51	0.165	0.462	1753
24,060,000	0.300	0.01	0.01	0.01	02/07/2018	02/07/2018	---	GEN. COMMERCIAL & IND.SA (CR)	0.605	0.83 #	0.6 13/09/2018	0.6	0.6	0.63	0.605	0.616	480@0.605	2579@0.620	---	---	18,030	27	11,104.40	14,556.30	0.49	0.66	2797
34,720,000	0.310	---	---	---	16/06/2010	01/08/2007	---	DROMEAS SA (CR)	0.224	---	0.224 13/09/2018	0.228	0.22	0.228	0.224	0.222	10@0.222	7171@0.224	---	---	952	9	211.77	7,777.28	0.18	0.352	3726
13,673,200	0.880	---	---	---	18/07/2008	26/07/2001	---	EVROFARMA SA (CR)	0.53	6.00 #	0.5 13/09/2018	0.5	0.5	0.53	0.53	0.501	200@0.510	31@0.530	---	---	538	3	269.57	7,246.80	0.324	0.645	3577
27,848,000	0.300	0.0084	---	0.0034	20/08/2018	02/09/2003	---	NEWSPHONE HELLAS SA (CR)	0.33	-4.07	0.344 13/09/2018	0.368	0.33	0.368	0.33	0.33	4000@0.310	2000@0.340	---	---	2,005	3	661.84	9,189.84	0.23	0.458	2791
11,250,000	0.520	0.04	0.04	---	24/07/2017	09/11/2015	---	EKTER SA (CR)	1.07	3.88 #	1.03 13/09/2018	1.05	1.03	1.08	1.07	1.048	500@1.04	469@1.07	---	---	39,905	82	41,833.66	12,037.50	0.63	1.28	2357
82,667,000	0.300	---	---	---	22/07/2014	---	---	ELTECH ANEMOS S.A. (CR)	2	2.04 #	1.96 13/09/2018	2	1.95	2.02	2	1.98	100@1.96	330@2.00	---	---	8,700	26	17,223.56	165,334.00	1.525	2.09	7537
18,410,839	1.00	---	---	---	07/07/2009	10/09/2010	---	ELASTRON (CR)	1.3	-1.14	1.315 13/09/2018	1.31	1.3	1.32	1.3	1.307	100@1.29	3700@1.33	-(6)-	2017	3,779	17	4,939.68	23,934.09	1.23	1.74	1757
375,241,586	0.390	---	---	---	26/06/2008	14/07/2006	---	ELVALHALCOR (CB)	1.395	3.33 #	1.35 13/09/2018	1.35	1.35	1.42	1.395	1.387	458@1.39	505@1.41	---	---	74,169	107	102,844.44	523,462.01	1.265	2.1	1755
19,864,886	5.60	0.672	0.672	0.672	08/03/2018	02/07/2008	---	BANK OF GREECE (CR)	13.75	---	13.75 13/09/2018	13.8	13.75	13.9	13.75	13.839	308@13.75	70@13.95	---	---	871	35	12,054.10	273,142.18	13.65	19.2	8355
26,730,187	0.520	---	---	0.04	09/07/2018	01/08/2017	---	ELTON SA (CR)	1.29	---	1.29 13/09/2018	1.29	1.26	1.32	1.29	1.29	100@1.27	3849@1.29	16.62	2017	11,241	21	14,496.97	34,481.94	1.255	1.71	1353
122,156,754	0.440	---	---	---	24/11/2014	28/03/2018	---	IASO SA (CR)	0.752	-0.53	0.756 13/09/2018	0.76	0.74	0.762	0.752	0.75	600@0.746	1895@0.762	---	---	24,032	38	18,035.52	91,861.88	0.721	0.714	4533
28,580,100	0.400	---	---	0.07	14/05/2018	04/07/2016	---	IKTINOS HELLAS SA (CR)	6.18	-0.32	6.2 13/09/2018	6.2	6.02	6.2	6.18	6.084	298@6.02	997@6.18	---	---	24,399	117	148,433.20	176,625.02	2.18	6.56	2353
7,500,000	0.330	---	---	---	19/06/2015	11/07/2018	---	S.KANAKIS SA (CR)	3.78	-0.53	3.8 13/09/2018	3.74	3.74	3.84	3.84	3.773	200@3.76	500@3.84	12.90	2017	75	2	283.00	28,350.00	3.16	4.2	3577
14,679,792	1.68	---	0.07	---	28/06/2017	04/09/2000	---	KARATZIS SA (CR)	6.85	2.24 #	6.7 13/09/2018	6.75	6.75	6.85	6.8	6.828	76@6.85	20@7.10	---	---	1,974	8	13,478.20	100,556.58	5.2	7.95	2723
19,804,134	0.300	---	---	---	01/07/2004	06/11/2017	---	KEKROPS SA (CR)	1.2	2.56 #	1.17 13/09/2018	1.16	1.16	1.22	1.2	1.197	600@1.20	304@1.22	---	2017	6,020	21	7,206.30	23,764.96	0.72	1.84	8633
40,219,218	0.300	---	---	---	02/07/2018	09/07/2013	---	KLOUKINAS - LAPPAS SA (CR)	0.598	-0.99	0.604 13/09/2018	0.604	0.58	0.604	0.604	0.59	500@0.582	500@0.612	---	---	3,660	14	2,159.37	24,051.09	0.58	0.842	2357
11,510,102	0.890	---	---	---	24/06/2005	06/10/1999	---	NAFPAKTOS TEXTILE IND. SA (CB)	0.49	---	0.49 13/09/2018	---	---	---	---	---	---	3000@0.500	---	---	---	---	---	5,639.95	0.31	0.665	3763
21,224,340	0.420	---	0.01	0.005	10/09/2018	25/04/2006	---	KORDELLOS BROS SA (CR)	0.37	3.35 #	0.358 13/09/2018	0.358	0.358	0.378	0.37	0.369	100@0.322	755@0.376	38.94	2017	4,245	12	1,564.88	7,853.01	0.3	0.555	1757
29,480,000	0.420	---	---	---	19/09																						

Number of Outstanding Securities	Nominal Value	Dividends [1]			Date of Last Coupon		Note	Shares	Closing price	% change	Previous closing price/date	Open price	Price min	Price max	Last price	Avg price	Last Bid [7]	Last Ask [7]	P/E after	Year	Volume	Trades	Transactions Value[8]	Company Mkt Value (thou. €)	Year low	Year high	Sector[4]
		2015	2016	2017	Dividend [2]	Right																					
2,160,524	0.670	0.0436	0.0436	---	07/08/2017	23/11/1999	---	N. LEVEDERIS SA (PB)	0.28	---	↘ 0.28	13/09/2018	---	---	---	---	---	---	---	2017	---	---	---	1,978.02	0.182	0.3	1757
17,120,280	0.940	---	---	---	01/06/2010	09/07/2018	---	LOULIS MILLS SA (CR)	2.22	1.83	# 2.18	13/09/2018	2.22	2.22	2.22	2.22	2000@2.10	2000@2.22	---	---	500	1	1,110.00	38,007.02	2	2.56	3577
11,700,000	0.360	---	---	---	02/06/2009	04/07/2018	---	MOTODYNAMICS S.A. (CR)	0.9	---	↘ 0.9	13/09/2018	---	---	---	---	350@0.825	200@1.00	---	---	---	---	10,530.00	0.61	1.2	5379	
6,340,000	0.600	---	---	---	30/11/2009	06/11/2017	---	NAKAS MUSIC	1.41	---	↘ 1.41	13/09/2018	---	---	---	---	485@1.41	1000@1.70	11.88	2017	---	---	---	8,939.40	1.15	1.85	5379
294,016,812	0.300	---	---	---	08/07/2008	21/03/2016	---	NIREFS SA (CR)	0.17	-2.19	€ 0.174	13/09/2018	0.164	0.164	0.17	0.17	0.168 1850@0.167	8930@0.170	---	---	19,930	18	3,343.09	49,982.86	0.118	0.337	3573
10,080,000	3.00	0.58	0.49	0.45	05/07/2018	27/08/2001	---	TPA SA (CR)	24.4	-2.79	€ 25.1	13/09/2018	24.6	23.8	24.8	24.4	24.218 92@23.90	50@24.40	33.96	2017	1,208	25	29,255.30	245,952.00	23.2	31.4	2777
4,971,466	1.46	---	---	---	04/07/2007	08/10/2003	---	PAIRIS SA (CR)	0.2	-4.76	€ 0.21	13/09/2018	0.2	0.2	0.2	0.2	0.2 173@0.186	40@0.250	---	---	212	2	42.40	994.29	0.085	0.446	2723
25,118,410	0.610	---	---	---	17/08/2000	10/09/2018	---	PAPOUTSANIS (CR)	0.768	---	↘ 0.768	13/09/2018	0.76	0.728	0.78	0.768	0.757 2@0.764	962@0.768	46.40	2017	11,818	32	8,945.78	19,290.94	0.504	0.904	3767
17,240,776	0.370	---	---	---	14/07/2005	30/09/2003	---	PERSEUS SA (CR)	0.8	3.90	# 0.77	13/09/2018	0.75	0.75	0.8	0.8	0.786 156@0.780	500@0.790	7.47	2017	4,413	16	3,468.37	13,792.62	0.33	1.14	3577
7,070,400	0.930	---	---	---	30/11/2016	06/05/2016	---	PETROPOULOS PETROS (CR)	6.58	1.23	# 6.5	13/09/2018	6.46	6.46	6.58	6.58	6.562 210@6.46	260@6.60	---	---	415	7	2,723.40	46,523.23	5.02	6.68	2753
22,075,665	0.330	0.08	0.05	0.07	29/05/2018	27/04/2015	---	PLAISIO COMPUTERS SA (CR)	4	4.44	# 3.83	13/09/2018	3.83	3.83	4	4	3.941 22@3.98	989@4.00	---	---	5,351	41	21,090.44	88,302.66	3.83	4.74	9572
43,741,452	0.660	---	---	0.0471	18/05/2018	01/11/1999	---	THRACE PLASTICS SA (CR)	2.13	-1.84	€ 2.17	13/09/2018	2.17	2.08	2.17	2.13	2.132 2@2.13	122@2.18	---	---	5,499	35	11,721.95	93,169.29	2.07	2.98	1357
245,497,164	0.300	---	---	---	01/07/2008	30/07/2012	---	SELONDA AQUACULTURE SA (CR)	0.075	---	↘ 0.075	13/09/2018	0.078	0.0722	0.078	0.075	0.073 425@0.072	310@0.077	---	---	9,793	13	713.65	18,412.29	0.054	0.25	3573
40,693,350	5.00	---	---	---	03/07/2006	26/05/2015	---	TECHNICAL OLYMPIC SA (CR)	1.825	-0.55	€ 1.835	13/09/2018	1.755	1.75	1.825	1.825	1.772 50@1.78	2@1.83	---	---	1,858	20	3,291.93	74,265.36	1.56	2.57	3728
7,568,960	3.45	0.3099	0.1049	0.0527	25/06/2018	26/06/2018	---	TITAN CEMENT CO. (PR)	16.4	---	↘ 16.4	13/09/2018	---	---	---	---	100@16.20	25@16.80	---	---	---	---	1,660,778.49	15.1	18.4	2353	
305,732,436	0.410	---	---	---	08/07/2009	28/09/2011	---	HYGEIA SA (CR)	0.89	0.68	# 0.884	13/09/2018	0.883	0.88	0.895	0.895	0.89 2850@0.887	5000@0.892	---	---	405,997	32	361,374.88	272,101.87	0.558	0.988	4533
10,203,575	0.730	---	---	---	16/07/2007	18/10/1999	---	FIERATEX SA (CR)	0.256	---	↘ 0.256	13/09/2018	---	---	---	---	600@0.181	2000@0.248	---	2017	---	---	---	2,612.12	0.128	0.3	3763

Main Market - Low Liquidity Class

14,000,000	4.15	---	---	---	23/04/2010	29/06/1999	---	ALPHA REAL ESTATE SA(CR)	6.15	---	↘ 6.15	13/09/2018	6.45	6.45	6.45	6.45	30@6.20	50@6.45	---	---	3	1	19.35	86,100.00	5.75	7.5	8637
215,805,843	0.300	---	---	---	20/07/2009	29/12/2010	---	ATTICA HOLDINGS (CR)	1.49	-1.32	€ 1.51	13/09/2018	1.47	1.46	1.49	1.49	1.48 250@1.45	3150@1.50	---	---	2,349	8	3,477.01	321,550.71	1.3294	1.7962	5759
51,119,369	0.700	---	---	---	01/07/2008	01/03/2010	---	AUDIO VISUAL ENTERPRISES (CR)	0.105	---	↘ 0.105	13/09/2018	---	---	---	---	---	956@0.104	---	---	---	---	---	5,367.53	0.087	0.169	5553
15,816,009	0.300	---	---	---	01/07/2009	17/07/2000	---	BYTE COMPUTER SA (CR)	0.476	---	↘ 0.476	13/09/2018	0.476	0.476	0.476	0.476	0.476	157@0.500	---	---	31	1	14.76	7,528.42	0.45	0.705	9533
52,800,154	0.300	---	---	---	20/08/2014	21/06/2004	---	F.G. EUROPE S.A. (CR)	0.448	---	↘ 0.448	13/09/2018	---	---	---	---	400@0.414	---	---	---	---	---	---	23,654.47	0.406	0.77	3722
4,740,000	0.860	---	---	---	14/03/2003	---	---	LOGISMOS S.A. (CR)	0.432	---	↘ 0.432	13/09/2018	0.43	0.43	0.432	0.432	0.432 44@0.430	2300@0.432	50.69	2017	256	2	110.48	2,047.68	0.318	0.48	9533
22,996,875	1.25	---	---	---	24/06/2011	02/02/2016	---	NEXANS HELLAS SA (CR)	1.33	---	↘ 1.33	13/09/2018	---	---	---	---	100@1.25	81@1.33	---	2017	---	---	---	30,585.84	1.15	1.82	2733
57,434,884	1.31	---	---	---	05/06/2008	12/06/2009	---	REDS S.A. (CR)	0.8	---	↘ 0.8	13/09/2018	0.78	0.78	0.78	0.78	0.78 88@0.780	1200@0.860	---	---	12	1	9.36	45,947.91	0.72	1.05	8633
80,690,653	0.500	---	---	---	25/04/2014	22/12/2016	---	TRASTOR REAL EST. INV. CO.(CR)	0.72	2.13	# 0.705	13/09/2018	0.705	0.705	0.72	0.72	0.718 22@0.720	50@0.740	-(6)-	2017	393	4	282.30	58,097.27	0.7	0.9	8671
417,608	16.00	---	---	0.75	05/04/2018	05/03/2013	---	ANDROMEDA SA (CR)	19	---	↘ 19	13/09/2018	---	---	---	---	8@18.70	60@19.40	3.78	2017	---	---	---	7,934.55	18	23.6	8985
15,300,000	0.300	---	---	---	30/07/2009	13/12/1999	---	ATTICA PUBLICATIONS SA (CR)	0.505	---	↘ 0.505	13/09/2018	---	---	---	---	340@0.458	410@0.555	---	---	---	---	---	7,726.50	0.45	0.66	5557
18,810,000	0.400	---	---	---	08/07/2010	14/11/2007	---	VARVERIS - MODA BAGNO SA (CR)	0.49	---	↘ 0.49	13/09/2018	---	---	---	---	---	14375@0.442	---	---	---	---	---	9,216.90	0.442	0.49	2353
23,986,500	1.05	---	---	---	26/06/2009	15/03/2000	---	BIOKARPET S.A.(CR)	0.476	---	↘ 0.476	13/09/2018	0.505	0.505	0.505	0.505	0.505 10@0.505	151@0.515	---	---	200	1	101.00	11,417.57	0.296	0.705	3726
4,968,600	2.88	---	---	---	01/07/1998	14/12/1998	---	VIS SA (CR)	0.9	---	↘ 0.9	13/09/2018	---	---	---	---	---	70@0.990	---	2017	---	---	---	4,471.74	0.72	1.03	2723
6,325,000	0.600	---	0.11	0.15	03/07/2018	17/02/2014	---	VOGIATZOGLOU SYSTEMS SA (CR)	2.12	---	↘ 2.12	13/09/2018	---	---	---	---	---	3950@2.30	---	---	---	---	---	13,409.00	1.36	2.24	2797
8,418,750	0.300	0.12	0.3	0.28	19/06/2018	27/06/2012	---	GEKE SA (CB)	4.9	---	↘ 4.9	13/09/2018	---	---	---	---	250@4.78	100@5.20	16.44	2017	---	---	---	41,251.88	4.38	5.9	5753
15,000,000	0.300	---	---	---	06/07/2007	18/07/2000	---	DAIOS PLASTICS SA (CR)	2.8	---	↘ 2.8	13/09/2018	---	---	---	---	750@2.70	---	---	---	---	---	---	42,000.00	2.52	2.88	1357
255,494,534	3.00	0.2035	0.2	0.22	08/05/2018	23/12/2015	---	NBG PANGAEA (CR)	4.72	---	↘ 4.72	13/09/2018	---	---	---	---	---	152@4.80	---	---	---	---	---	1,205,934.20	4.32	5.25	8671
3,307,500	0.710	---	---	---	11/08/2010	15/12/2017	---	ELVE SA (CR)	3.18	-5.36	€ 3.36	13/09/2018	3.4	3.16	3.4	3.16	3.18 45@3.16	9@3.40	---	---	85	5	270.30	10,517.85	2.48	3.54	3763
31,734,530	1.60	---	---	---	09/07/2007	19/07/2006	---	ELGEKA SA (CR)	0.14	-7.28	€ 0.151	13/09/2018	0.139	0.139	0.151	0.151	0.14 340@0.142	250@0.151	---	---	4,554	4	636.05	4,442.83	0.139	0.264	3577

Number of Outstanding Securities	Nominal Value	Dividends [1]			Date of Last Coupon		Note	Shares	Closing price	% change	Previous closing price/date	Open price	Price min	Price max	Last price	Avg price	Last Bid [7]	Last Ask [7]	P/E after	Year	Volume	Trades	Transactions Value[8]	Company Mkt Value (thou. €)	Year low	Year high	Sector[4]		
		2015	2016	2017	Dividend [2]	Right																							
23,828,130	0.500	0.16	0.052	0.06	18/07/2018	17/02/2009	---	ELINOIL S.A. (CR)	1.46	---	↘	1.46	13/09/2018	---	---	---	---	1000@1.38	200@1.52	---	---	---	---	---	34,789.07	1.3	1.95	537	
14,050,971	0.340	---	---	---	13/12/2017	21/02/2018	---	ELTRAK SA (CR)	2.3	---	↘	2.3	13/09/2018	2.3	2.3	2.3	2.3	750@2.12	650@2.28	---	---	20	1	46.00	32,317.23	2.04	3.82	2753	
51,830,520	0.300	---	---	---	23/12/2003	24/01/2007	---	SELECTED TEXT. IND. ASSOC (CR)	0.18	---	↘	0.18	13/09/2018	0.189	0.189	0.189	0.189	0.19	300@0.162	2794@0.189	---	2016	1	1	0.19	9,329.49	0.143	0.276	3763
36,300,000	1.12	0.25	0.228	0.221	28/06/2018	12/12/2007	---	THESSALONIKA WATER & SEWERAGE	4.36	0.23	#	4.35	13/09/2018	4.4	4.36	4.4	4.4	4.371	3@4.45	53@4.45	---	---	701	6	3,064.40	158,268.00	4.34	5.22	7577
27,503,677	0.630	0.06	0.1	0.12	30/05/2018	18/10/1999	---	EUROPEAN RELIANCE INSUR. (CR)	3.4	---	↘	3.4	13/09/2018	3.4	3.4	3.4	3.4	3.4	30@3.33	2995@3.40	---	---	5	1	17.00	93,512.50	3.26	4.05	8536
86,735,980	0.310	---	---	---	06/07/2009	02/01/2002	---	ATHENS MEDICAL CENTER SA (CR)	1.16	---	↘	1.16	13/09/2018	1.15	1.15	1.15	1.15	1.15	59@1.15	10@1.18	---	---	1	1	1.15	100,613.74	1.15	1.62	4533
8,226,132	0.900	---	---	---	15/05/2009	13/10/2014	---	ILYDA S.A. (CR)	0.212	---	↘	0.212	13/09/2018	---	---	---	---	---	500@0.200	500@0.220	6.69	2016	---	---	---	1,743.94	0.172	0.268	9537
8,298,467	0.400	---	---	---	30/08/1993	08/05/2013	---	IDEAL GROUP SA (CR)	0.945	---	↘	0.945	13/09/2018	---	---	---	---	---	300@0.855	819@0.920	---	---	---	---	---	7,842.05	0.675	0.995	9574
2,566,836	0.440	---	---	---	13/08/2010	09/01/2007	---	INTERWOOD-XYLEMPORIA (PR)	0.066	---	↘	0.066	13/09/2018	---	---	---	---	---	19006@0.073	---	---	---	---	---	---	3,877.97	0.060	0.0725	2353
34,986,430	0.440	---	---	---	25/07/2008	23/02/2010	---	INTERWOOD-XYLEMPORIA (CR)	0.106	---	↘	0.106	13/09/2018	---	---	---	---	---	6958@0.096	600@0.116	---	---	---	---	---	3,877.97	0.09	0.148	2353
11,233,200	0.730	---	---	---	12/07/2010	30/07/1999	---	INTERTECH SA (CR)	0.298	---	↘	0.298	13/09/2018	0.318	0.298	0.318	0.298	0.306	1@0.318	1500@0.316	---	2017	64	3	19.57	3,347.49	0.282	0.54	9572
9,742,920	0.400	0.01	---	---	12/08/2016	14/07/2000	---	KARAMOLEGOS SA (CR)	1.85	---	↘	1.85	13/09/2018	---	---	---	---	---	---	100@2.02	---	---	---	---	---	18,024.40	1.64	2.46	3577
2,760,000	11.83	8.5	9.2	9.2	23/07/2018	16/07/1990	---	KARELIA TOBACCO CO. SA (CB)	270	1.50	#	266	13/09/2018	266	266	270	270	267.303	9@270.00	50@274.00	---	---	3,450	22	922,196.00	745,200.00	244	306	3785
6,700,000	0.800	0.023	0.028	0.028	28/06/2018	29/05/2014	---	MILLS KEPENOS (CR)	1.4	---	↘	1.4	13/09/2018	---	---	---	---	---	200@1.26	200@1.44	30.26	2017	---	---	---	9,380.00	1.4	2	3577
18,017,472	0.360	---	---	---	15/06/2010	28/08/2017	---	KTIMA KOSTAS LAZARIDIS SA (CR)	0.74	---	↘	0.74	13/09/2018	0.75	0.75	0.75	0.75	0.75	70@0.740	325@0.750	---	---	175	1	131.25	13,332.93	0.5	0.755	3535
21,364,000	1.12	---	---	0.2	28/06/2018	10/08/2005	---	LAMPSPA HOTEL SA (CR)	18.5	---	↘	18.5	13/09/2018	---	---	---	---	---	100@18.30	100@18.80	---	---	---	---	---	395,234.00	16.5	19	5753
5,939,268	0.620	---	---	---	10/07/2003	03/01/2002	---	LANAKAM SA (CR)	0.326	---	↘	0.326	13/09/2018	---	---	---	---	---	---	955@0.348	---	2017	---	---	---	1,936.20	0.228	0.57	3763
8,321,682	0.670	---	---	---	17/08/2007	23/11/1999	---	N. LEVEDERIS SA (CB)	0.165	---	↘	0.165	13/09/2018	---	---	---	---	---	---	1986@0.149	---	2017	---	---	---	1,978.02	0.125	0.208	1757
9,819,370	0.690	---	---	---	14/08/2007	09/01/2004	---	MATHIOS REFRACTORY SA (CR)	0.22	---	↘	0.22	13/09/2018	0.24	0.206	0.24	0.206	0.212	600@0.198	435@0.240	---	---	28	2	5.94	2,160.26	0.179	0.362	2353
106,980,050	2.25	---	---	---	25/07/2008	24/02/2014	---	MINOAN LINES SA (CR)	2.4	---	↘	2.4	13/09/2018	2.4	2.4	2.4	2.4	2.4	3644@2.40	---	---	---	356	4	854.40	256,752.12	2.24	2.64	5759
32,188,050	1.04	---	---	---	21/07/2008	20/01/2000	---	EL. D. MOUZAKIS SA (CB)	0.34	---	↘	0.34	13/09/2018	0.34	0.34	0.34	0.34	0.34	400@0.306	458@0.340	---	---	401	2	136.34	10,943.94	0.258	0.446	3763
3,873,120	0.300	---	---	---	07/07/2008	04/10/2012	---	DRUCKFARBEN HELLAS (CR)	1.13	-9.60	€	1.25	13/09/2018	1.13	1.13	1.13	1.13	1.13	---	7@1.37	---	---	1,000	4	1,130.00	4,376.63	0.92	1.4	1357
27,379,200	0.300 (0.1808)	---	---	0.148	20/07/2018	24/08/2018	---	CRETE PLASTICS SA (CR)	13	---	↘	13	13/09/2018	13	13	13	13	13	200@12.50	50@13.90	---	---	20	2	260.00	355,929.60	9.05	15.2	1357
21,912,599	0.300	---	---	---	11/04/2011	23/02/2007	---	REVOIL (CR)	0.452	---	↘	0.452	13/09/2018	---	---	---	---	---	81@0.452	1500@0.496	---	---	---	---	---	9,904.49	0.384	0.69	5379
4,181,450	0.500	---	---	---	21/08/2000	05/03/2002	---	FLOUR MILLS SARANTOPOULOS SA	0.64	---	↘	0.64	13/09/2018	0.7	0.7	0.7	0.7	0.7	1000@0.580	490@0.700	---	---	10	1	7.00	2,676.13	0.53	0.7	3577
28,438,268	0.300	---	---	---	21/08/2006	24/11/1999	---	SPIROY AGRICULTURE SA (CR)	0.236	---	↘	0.236	13/09/2018	0.214	0.214	0.214	0.214	0.214	---	70@0.236	---	---	288	2	61.63	6,711.43	0.159	0.384	1357
8,340,750	1.18	---	---	---	25/06/2009	09/09/2015	---	HAIDEMENOS SA (CR)	0.48	3.45	#	0.464	13/09/2018	0.48	0.48	0.48	0.48	0.48	130@0.480	1000@0.500	---	2017	1,000	4	480.00	4,003.56	0.312	0.605	2791

Exchange Traded Funds (ETFs)

642,382	---	---	---	---	15/06/2016	---	ALPHA ETF FTSE Athex Large Cap	18	-0.28	€	18.05	13/09/2018	17.92	17.92	18	18	17.991	---	---	---	---	172	2	3,094.40	---	17.92	22.9	12003
---------	-----	-----	-----	-----	------------	-----	--------------------------------	----	-------	---	-------	------------	-------	-------	----	----	--------	-----	-----	-----	-----	-----	---	----------	-----	-------	------	-------

Surveillance

5,867,311	0.300	---	---	---	11/08/2010	28/04/2017	5123	DIONIC (CR)	0.75	---	0.75	13/09/2018	---	---	---	---	---	---	618@0.600	---	---	---	---	---	4,400.48	0.179	0.935	2797
163,854,177	0.300	---	---	---		19/09/2016	5161	Forthnet (CR)	0.118	-11.28	€	0.133	13/09/2018	0.133	0.116	0.133	0.118	341@0.116	2000@0.120	---	---	15,089	31	1,780.31	19,334.79	0.116	0.446	9535
355,437,751	0.360	---	---	---	07/07/2010	21/09/2017	5160	FRIGOGLASS SA (CR)	0.168	-1.75	€	0.171	13/09/2018	0.171	0.168	0.171	0.168	3626@0.168	75873@0.170	---	2016	6,274	4	1,054.33	59,713.54	0.158	0.266	2757
51,081,030	1.00	---	---	---	20/08/2007	03/09/2007	4912	LAVIPHARM SA (CR)	0.174	---	0.174	13/09/2018	---	---	---	---	---	600@0.140	5000@0.160	---	---	---	---	---	8,888.10	0.124	0.25	4577
4,419,616	1.58	---	---	---	21/07/2011	04/03/2015	4983	MEDICON S.A (CR)	1.16	---	1.16	13/09/2018	---	---	---	---	---	100@0.930	200@1.39	---	---	---	---	---	5,126.75	0.66	1.5	4535
14,967,940	0.500	---	---	---	21/05/2008	04/01/2008	4956	PASAL DEVELOPMENT S.A. (CR)	0.0735	17.60	#	0.063	13/09/2018	0.063	0.063	0.074	0.074	7545@0.074	---	---	---	26,200	10	1,931.10	1,100.14	0.06	0.142	8633
65,326,268	0.530	---	---	---	04/07/2007	19/07/2006	4750	SATO SA (CR)	0.037	---	0.037	13/09/2018	---	---	---	---	---	6000@0.030	180@0.035	---	---	---	---	---	2,417.07	0.0265	0.082	3726
13,000,000	1.00	---	---	---	01/08/2007	07/04/2000	5093	AKRITAS SA (CR)	0.27	---	0.27	13/09/2018	0.27	0.27	0.27	0.27	30@0.278	165@0.324	---	---	10	1	2.70	3,510.00	0.12	0.52	2353	

Number of Outstanding Securities	Nominal Value	Dividends [1]			Date of Last Coupon		Note	Shares	Closing price	% change	Previous closing price/date	Open price	Price min	Price max	Last price	Avg price	Last Bid [7]	Last Ask [7]	P/E after	Year	Volume	Trades	Transactions Value[8]	Company Mkt Value (thou. €)	Year low	Year high	Sector[4]	
		2015	2016	2017	Dividend [2]	Right																						
185,373,016	0.300	---	---	---	02/07/2008	28/02/2011	4957	ANEK LINES SA (CR)	0.059	2.61 #	0.058	13/09/2018	0.061	0.0575	0.061	0.061	0.05930000@0.058	9735@0.061	---	---	8,455	12	498.68	11,184.41	0.056	0.1	5759	
312,163	0.300	---	---	---	02/07/2008	28/02/2011	4959	ANEK LINES SA (PR, Issue '90)	0.06	---	0.06	13/09/2018	---	---	---	---	---	---	---	---	---	---	---	11,184.41	0.06	0.092	5759	
2,969,713	0.300	---	---	---	02/07/2008	28/02/2011	4958	ANEK LINES SA (PR, Issue '96)	0.077	-19.79	0.096	13/09/2018	0.077	0.077	0.077	0.077	0.077	541@0.077	---	---	100	1	7.70	11,184.41	0.073	0.125	5759	
4,737,503	0.320	---	---	---	22/06/2005	22/09/2015	5115	VARANGIS AVEPE S.A. (CR)	0.048	---	0.048	13/09/2018	---	---	---	---	---	---	---	---	---	---	---	227.40	0.034	0.17	3726	
16,383,428	0.300	---	---	---	25/06/2002	21/06/2013	5162	VARVARESSOS SA (CB)	0.0365	---	0.037	13/09/2018	---	---	---	---	---	10@0.030	---	2017	---	---	---	598.00	0.0225	0.108	3763	
17,579,754	4.16	---	---	---	18/08/2006	02/08/2010	5156	BIOTER SA (CR)	0.113	---	0.113	13/09/2018	0.113	0.096	0.113	0.103	0.113	5@0.104	1000@0.133	---	---	60,153	9	6,795.53	1,986.51	0.05	0.144	2357
77,126,446	0.340	---	---	---	23/05/2005	18/08/2011	5094	G.E. DIMITRIOU (CR)	0.0195	---	0.02	13/09/2018	---	---	---	---	---	9172@0.020	---	---	---	---	---	1,503.97	0.0115	0.033	3722	
15,878,748	0.480	---	---	---	10/07/2006	22/03/2004	5095	DOMIKI KRITIS SA (CR)	0.088	---	0.088	13/09/2018	---	---	---	---	300@0.088	323@0.105	---	---	---	---	---	1,397.33	0.072	0.183	2357	
3,961,300	1.28	---	---	---	29/06/2004	03/08/2000	5080	DUROS SA (CR)	0.236	---	0.236	13/09/2018	---	---	---	---	---	91@0.236	---	2017	---	---	---	934.87	0.12	0.3	3763	
7,085,888	1.59	---	---	---	02/07/1996	06/09/2010	4690	ELVIEMEK (CR)	4.7	---	4.7	13/09/2018	---	---	---	---	---	---	---	---	---	---	---	33,303.67	4.7	4.7	8633	
11,125,110	0.300	---	---	---	02/06/2010	06/11/2017	5178	EUROCONSULTANTS S.A. (CR)	0.198	---	0.198	13/09/2018	---	---	---	---	---	147@0.198	---	---	---	---	---	2,202.77	0.12	0.535	2791	
7,125,216	0.650	---	---	---	01/07/2005	14/12/1999	4955	KRE.KA SA (CR)	0.0425	---	0.043	13/09/2018	---	---	---	---	10000@0.040	---	---	2017	---	---	---	302.82	0.0425	0.338	3573	
7,734,375	1.00	---	---	---	09/07/2007	07/01/2011	5112	LIVANIS SA (CR)	0.0455	---	0.046	13/09/2018	---	---	---	---	---	210@0.055	---	---	---	---	---	351.91	0.0165	0.122	5557	
15,842,391	1.51	---	---	---	15/07/2009	12/05/2000	5141	BITROS HOLDING SA (CR)	0.191	---	0.191	13/09/2018	---	---	---	---	---	390@0.180	---	---	---	---	---	3,025.90	0.096	0.224	1757	
25,179,640	0.600	---	---	---	08/08/1994	19/09/2000	5185	J.BOUTARIS & SON HOLD. SA (CB)	0.0315	-14.87	0.037	13/09/2018	0.0315	0.0315	0.0315	0.0315	0.032	999@0.032	---	---	---	100	2	3.15	902.50	0.0315	0.066	3535
1,540,000	0.600	---	---	---	08/08/1994	19/09/2000	5186	J.BOUTARIS & SON HOLD. (PB)	0.071	---	0.071	13/09/2018	---	---	---	---	---	4000@0.085	---	---	---	---	---	902.50	0.0675	0.09	3535	
119,596,817	0.300	---	---	---	15/07/2008	27/04/2017	5163	NIKAS SA (CR)	0.32	-3.03	0.33	13/09/2018	0.32	0.32	0.32	0.32	0.32	950@0.320	---	---	---	26	1	8.32	38,270.98	0.28	0.5	3577
24,319,250	0.300	---	---	---	09/07/2002	04/07/2007	5165	PROODEFTIKH SA (CR)	0.1	-0.99	0.101	13/09/2018	0.1	0.1	0.1	0.1	0.1	300@0.081	1695@0.099	---	---	305	2	30.50	2,431.93	0.047	0.138	2357
10,186,667	1.35	---	---	---	24/06/2008	02/02/2016	4887	SIDMA SA (CR)	0.36	---	0.36	13/09/2018	---	---	---	---	---	499@0.360	---	---	---	---	---	3,667.20	0.232	0.46	1757	
23,743,440	0.300	---	---	---	23/06/2008	24/07/2018	---	SFAKIANAKIS SA (CR)	0.304	-13.64	0.352	13/09/2018	0.352	0.284	0.352	0.284	0.303	195@0.284	293@0.352	---	---	350	5	106.20	7,218.01	0.27870	0.6304	5379

Suspension Status

215,246,452	0.300	---	---	---	25/06/2001	24/09/2001	5164	ALTEC SA (CR)	0.012	---	0.012	30/11/2015	---	---	---	---	---	---	---	---	---	---	---	2,582.96	0.012	0.012	9533
20,255,805	0.300	---	---	---	22/08/2006	02/08/2010	5136	AXON HOLDING SA (CR)	0.058	---	0.058	28/04/2017	---	---	---	---	---	---	---	---	---	---	---	1,174.84	0.058	0.058	4533
21,820,410	0.800	---	---	---	22/05/2008	02/08/2011	5174	EUROMEDICA SA (CR)	0.448	---	0.448	30/04/2018	---	---	---	---	---	---	---	---	---	---	---	9,775.54	0.0825	0.45	4533
66,948,210	0.300	---	---	---	22/09/2015	22/09/2015	5179	FOLLI FOLLIE (CR)	4.8	---	4.8	24/05/2018	---	---	---	---	---	---	---	---	---	---	---	321,351.41	4.8	19.9	5379
13,191,620	0.620	---	---	---	04/08/2010	09/09/2002	5170	YALCO - CONSTANTINOU SA (CB)	0.178	---	0.178	27/04/2018	---	---	---	---	---	---	---	---	---	---	---	2,348.11	0.0565	0.181	3722
33,301,715	0.320	---	---	---	27/06/2003	08/07/2009	5167	AEGEK (CR)	0.054	---	0.054	26/04/2018	---	---	---	---	---	---	---	---	---	---	---	1,798.29	0.028	0.09	2357
2,235,600	0.350	---	---	---	21/04/2010	25/07/2017	5180	AEOLIAN INVESTMENT FUND (CR)	0.41	---	0.41	19/07/2018	---	---	---	---	---	---	---	---	---	---	---	916.60	0.352	0.65	8985
5,000,000	0.400	---	---	---	03/06/2009	01/09/2014	5087	ALCO HELLAS SA (CR)	0.18	---	0.18	31/03/2015	---	---	---	---	---	---	---	---	---	---	---	900.00	0.18	0.18	1753
14,870,100	0.300	---	---	---	15/05/2008	26/09/2011	5130	ALPHA GRISSIN S.A. (CR)	0.014	---	0.014	13/04/2017	---	---	---	---	---	---	---	---	---	---	---	208.18	0.014	0.014	9533
81,644,555	0.300	---	---	---	01/07/2008	02/09/2002	5098	ATTI - KAT SA (CR)	0.012	---	0.012	29/05/2015	---	---	---	---	---	---	---	---	---	---	---	979.73	0.012	0.012	2357
20,121,710	1.21	---	---	---	27/07/1992	12/03/2003	5002	BALKAN R.E. (CR)	0.19	---	0.19	29/08/2013	---	---	---	---	---	---	---	---	---	---	---	3,823.12	0.19	0.19	8633
33,930,000	0.300	---	---	---	03/07/2006	30/05/2001	4865	BABIS VOVOS SA (CR)	0.304	---	0.304	30/03/2012	---	---	---	---	---	---	---	---	---	---	---	10,314.72	0.304	0.304	8633
6,000,000	0.600	---	---	---	13/06/2008	08/04/2004	5172	EUROBROKERS S.A. (CR)	0.008	---	0.008	27/04/2018	---	---	---	---	---	---	---	---	---	---	---	48.00	0.007	0.008	8534
7,847,611	1.20	---	---	---	01/08/2007	28/09/2011	4939	EDRASIS - C. PSALLIDAS SA (CR)	0.15	---	0.15	29/11/2012	---	---	---	---	---	---	---	---	---	---	---	1,177.14	0.15	0.15	2357
36,748,909	0.730	---	---	---	15/12/2005	13/12/2006	5109	HEL. SUGAR INDUSTRY SA (CB)	0.075	---	0.075	29/02/2016	---	---	---	---	---	---	---	---	---	---	---	2,756.17	0.075	0.075	3577
30,390,000	0.310	---	---	---	18/08/2008	29/12/2006	5099	HELLENIC FISHFARMING SA (CR)	0.07	---	0.07	02/06/2015	---	---	---	---	---	---	---	---	---	---	---	2,127.30	0.07	0.07	3573
24,619,524	0.500	---	---	---	10/10/1986	30/12/2002	4914	KERAMIA-ALLATINI (CR)	0.088	---	0.088	30/08/2012	---	---	---	---	---	---	---	---	---	---	---	2,166.52	0.088	0.088	8633

Daily Official List

Year: 139 Trading Day No: 176

Section 2: Analytic Figures of Shares Transactions

Friday, 14 September, 2018

Number of Outstanding Securities	Nominal Value	Dividends [1]			Date of Last Coupon Dividend [2]		Note	Shares	Closing price	% change	Previous closing price/date	Open price	Price min	Price max	Last price	Avg price	Last Bid [7]	Last Ask [7]	P/E after	Year	Volume	Trades	Transactions Value[8]	Company Mkt Value (thou. €)	Year low	Year high	Sector[4]
66,937,526	0.700	---	---	---	13/08/2010	21/05/2003	5003	MICHANIKI SA (CR)	0.1	---	0.1	29/08/2013	---	---	---	---	---	---	---	---	---	---	---	9,186.78	0.1	0.1	2357
25,968,987	0.700	---	---	---	13/08/2010	21/05/2003	5004	MICHANIKI SA (PR)	0.096	---	0.096	29/08/2013	---	---	---	---	---	---	---	---	---	---	---	9,186.78	0.096	0.096	2357
23,935,280	0.300	---	---	---	29/06/2009	13/06/2000	5153	NAYTEMPORIKI PUBLISHING SA(CR)	0.107	---	0.107	02/10/2017	---	---	---	---	---	---	---	---	---	---	---	2,561.07	0.107	0.107	5557
255,459,600	0.300	---	---	---	26/06/2000	03/12/2010	5101	NEL SA (CR)	0.07	---	0.07	31/08/2015	---	---	---	---	---	---	---	---	---	---	---	17,882.17	0.07	0.07	5759
23,463,874	0.800	---	---	---	23/05/2003	21/12/1999	4918	NEORION SA (CR)	0.125	---	0.125	30/08/2012	---	---	---	---	---	---	---	---	---	---	---	2,932.98	0.125	0.125	2753
18,750,000	0.300	---	---	---	02/07/2001	31/12/2012	5154	PEGASUS PUBLISHING S.A. (CR)	0.089	---	0.089	02/10/2017	---	---	---	---	---	---	---	---	---	---	---	1,668.75	0.089	0.089	5557
144,688,060	0.600	---	---	---	21/04/2008	10/03/2010	4982	T BANK (CR)	0.048	---	0.052 #	29/11/2011	---	---	---	---	---	---	---	---	---	---	---	6,945.03	0.048	0.048	8355
284,465,964	3.70	---	---	---	20/06/2008	15/06/2009	4913	TT HELLENIC POSTBANK (CR)	0.168	---	0.239 #	29/08/2012	---	---	---	---	---	---	---	---	---	---	---	47,790.28	0.168	0.168	8355
13,920,000	0.320	---	---	---	19/11/2001	01/08/2000	4726	TEXAPRET SA (CR)	0.08	---	0.08	28/02/2011	---	---	---	---	---	---	---	---	---	---	---	1,113.60	0.08	0.08	3763
100,793,572	0.300	---	---	---	16/07/2009	11/02/2016	5110	TELETIPPOS SA (CR)	0.06	---	0.06	07/03/2016	---	---	---	---	---	---	---	---	---	---	---	6,047.61	0.06	0.06	5553
766,000	1.00	---	---	---	01/07/2004	11/12/2012	5168	TRIA ALFA SA (CR)	2.2	---	2.2	27/04/2018	---	---	---	---	---	---	---	---	---	---	---	1,846.90	1.71	2.48	3763
245,000	1.00	---	---	---	19/07/2010	11/12/2012	5169	TRIA ALFA SA (PR)	0.66	---	0.66	27/04/2018	---	---	---	---	2839@0.660	---	---	---	---	---	---	1,846.90	0.6	0.66	3763
510,840	1.00	---	---	---	15/07/2008	21/11/2013	5036	TROPEA HOLDING (CR)	2	---	0.02 #	30/03/2012	---	---	---	---	---	---	---	---	---	---	---	1,021.68	2	2	3722
4,034,950	0.680	---	---	---	01/07/2005	30/12/2010	5171	CHATZIKRANIOTIS & SONS SA (CR)	0.14	---	0.14	27/04/2018	---	---	---	---	---	---	---	---	---	---	---	564.89	0.102	0.18	3577

Shares' Notes

Code	Note text
()	- Adjusted dividends.
*	- Last adjusted closing price.
[1]	- Net dividends.
[2]	- The "Date of Last Coupon" for New listings refers to the date company's stocks started to trade in Athex
[3]	- The Company Market Value is referred to the number of outstanding shares
[4]	- Sectors codification can be found in Appendix A
[5]	- The Market Value refers to the total number of shares listed (including their several classes) in the exchange by the company.
[6]	- P/E greater than 100
[7]	- Last view of the Order Book before the end of the trading session
[8]	- All Blocks Methods' Transactions Value are included.
4690	- Transfer to Surveillance category as of 4/4/2006.
4726	- Suspension of trading as of 1/3/2011.
4750	- Transfer to the "Under Surveillance Category" from 8/4/2011.
4865	- Suspension of trading as of 2/4/2012.
4887	- Transfer to the Surveillance Category as of 10/4/2012.
4912	- Transfer to the Surveillance Category as of 31/7/2012.
4913	- Suspension of trading as of 30/8/2012.
4914	- Suspension of trading as of 31/8/2012.
4918	- Suspension of trading as of 31/8/2012.
4939	- Suspension of trading as of 30/11/2012.
4955	- Transfer to the Surveillance Category as from 5/4/2013.
4956	- Transfer to the Surveillance Category as from 5/4/2013.
4957	- Transfer to the Surveillance Category as from 5/4/2013.
4958	- Transfer to the Surveillance Category as from 5/4/2013.
4959	- Transfer to the Surveillance Category as from 5/4/2013.
4982	- Suspension of trading as of 30/11/2011.
4983	- Transfer to the Surveillance Category as of 5/4/2013.
5002	- Suspension of trading as of 30/08/2013.
5003	- Suspension of trading as of 30/08/2013.
5004	- Suspension of trading as of 30/08/2013.
5036	- The company's share is under suspension of trading as of 2/4/2012. During suspension, the company proceeded and concluded a share reverse split, according to which - after the conclusion of the corporate action - the total number of the company's shares, as well as, the last closing price of 30/03/2012 were adjusted.
5080	- Transfer to the Surveillance Category as of 05/12/2014.
5087	- Suspension of trading as of 1/4/2015.
5093	- Transfer to the Surveillance Category as of 8/4/2015.
5094	- Transfer to the Surveillance Category as of 8/4/2015.
5095	- Transfer to the Surveillance Category as from 9/4/2015.
5098	- Suspension of trading as of 2/6/2015.
5099	- Suspension of trading as of 3/6/2015.
5101	- Suspension of trading as of 1/9/2015.
5109	- Suspension of trading as of 01/03/2016.
5110	- Suspension of trading as of 08/03/2016.
5112	- Transfer to the Surveillance Category as of 15/04/2016.
5115	- Transfer to the Surveillance Category as of 15/04/2016.
5123	- Transfer to the Surveillance Category as of 01/04/2016.
5130	- Suspension of trading as of 18/04/2017.
5136	- Suspension of trading as of 02/05/2017.
5141	- Transfer to the Surveillance Category as of 10/05/2017.
5153	- Suspension of trading as of 03/10/2017.
5154	- Suspension of trading as of 03/10/2017.
5156	- Transfer to the Surveillance Category as of 11/12/2017.
5160	- Transfer to the Surveillance Category as of 15/04/2016.

Shares' Notes

Code	Note text
5161	- Transfer to the Surveillance Category as of 25/11/2011.
5162	- Transfer to the Under Supervision Category as of 21/12/2009.
5163	- Transfer to the Surveillance Category as of 10/4/2012.
5164	- Suspension of trading as of 01/12/2015.
5165	- Transfer to the Surveillance Category as of 15/02/2018.
5167	- Suspension of trading as of 27/04/2018.
5168	- Suspension of trading as of 30/04/2018.
5169	- Suspension of trading as of 30/04/2018.
5170	- Suspension of trading as of 30/04/2018.
5171	- Suspension of trading as of 30/04/2018.
5172	- Suspension of trading as of 30/04/2018.
5174	- Suspension of trading as of 02/05/2018.
5178	- Transfer to the Surveillance Category as of 11/05/2018.
5179	- Suspension of trading as of 25/05/2018.
5180	- Transfer to the Surveillance Category as of 29/05/2018.
5185	- Transfer to the Surveillance segment as of 20/08/2018.
5186	- Transfer to the Surveillance segment as of 20/08/2018.

Securities Blocks Details

Securities	Block Volume	Price	Block Trade Value	Time of approval	Note
ALPHA BANK (CR)	331,152	1.24	411,125.21	10:54:37	20
MOTOR OIL (CR)	173,000	19.30	3,338,900.00	11:05:20	20
MOTOR OIL (CR)	60,000	19.30	1,158,000.00	11:06:29	20
MOTOR OIL (CR)	60,000	19.30	1,158,000.00	11:07:02	20
MOTOR OIL (CR)	130,000	19.30	2,509,000.00	11:07:51	20
MOTOR OIL (CR)	34,000	19.30	656,200.00	11:08:37	20
MOTOR OIL (CR)	23,000	19.30	443,900.00	11:09:13	20
MOTOR OIL (CR)	28,200	19.30	544,260.00	11:09:47	20
MOTOR OIL (CR)	21,000	19.30	405,300.00	11:10:28	20
MOTOR OIL (CR)	29,000	19.30	559,700.00	11:11:26	20
MOTOR OIL (CR)	34,100	19.30	658,130.00	11:12:02	20
MOTOR OIL (CR)	17,700	19.30	341,610.00	11:12:42	20
MOTOR OIL (CR)	30,000	19.30	579,000.00	11:13:14	20
MOTOR OIL (CR)	76,000	19.30	1,466,800.00	11:13:50	20
MOTOR OIL (CR)	34,000	19.30	656,200.00	11:14:26	20
MOTOR OIL (CR)	25,000	19.30	482,500.00	11:15:01	20
MOTOR OIL (CR)	30,000	19.30	579,000.00	11:15:32	20
MOTOR OIL (CR)	95,000	19.30	1,833,500.00	11:16:06	20
ALPHA BANK (CR)	623,112	1.25	775,774.44	15:14:30	20
OTE (CR)	87,000	10.67	927,855.00	15:15:32	20
TERNA ENERGY (CR)	3,186	6.15	19,597.09	15:43:21	14
TERNA ENERGY (CR)	500	6.37	3,185.00	16:08:34	18
PIRAEUS BANK (CR)	250,000	1.93	482,500.00	16:47:08	20
PIRAEUS BANK (CR)	250,000	1.93	482,500.00	16:52:13	20
EUROBANK ERGASIAS (CR)	814,661	0.599	487,574.61	17:07:15	20

Blocks Notes

9 - Method 6-1 / Special Fees

10 - Method 6-1 / Special Fees, SDS

14 - Method 6-3 / Settlement, Incomplete Buy and Sell

18 - Method 6-2 / SPOT 1

19 - Method 6-2 / SPOT 2

20 - Method 6-1 and Method 6-1 Same Day Settlement

21 - Other Pre-agreed

Shares Rights Details

Occured date	Exercise from	Exercise until	Trading until	Rights	Price min	Price max	Closing price	Last Bid	Last Ask	Volume	Trades	Transactions Value
-----------------	------------------	-------------------	------------------	--------	--------------	--------------	------------------	----------	----------	--------	--------	-----------------------

No Rights Transactions.

Shares Forced Sales

Securities	Transaction s Volume	Number of Trades	Transactions Value	Note
No Forced Transactions.				

Forced Sales Notes

- 1 - Normal Forced Sale.
- 2 - Forced Sales of Fixed Registered Shares.
- 3 - Forced Sales of Remaining Stock Fractions.

Forced Sales Registered Shares

Securities	Start Date	End Date	Initial Volume	Remaining Volume	Date	Avg price (day)	Avg price (period)	Number of Trades	Transactions Volume	Transactions Value
------------	------------	----------	----------------	------------------	------	-----------------	--------------------	------------------	---------------------	--------------------

No Fixed Registered Shares Forced Sales.

Forced Sales Notes

According to Decision 1/380/04.05.2008 of the Hellenic Republic Capital Market Commission, the certificated registered shares that have not been deposited to the issuer for dematerialisation, will be auctioned in the Athens Exchange by the supervising issuer. Forced sales procedure is held according to Article 99A of the Athens Exchange Rulebook. The average price of the period is calculated by dividing the Total transactions value by the Total volume and includes all the transactions made until the current date.

Exchange Traded Funds (ETFs) Characteristics

	Transactions Date (T)	Creation / Redemption	Units (T-1)	New Units (T-1)	Redemptio n Units (T-	Units (T) [1]	Fund Assets [2]	Net Unit Price	Dividen d per	Dividend Date
ALPHA ETF FTSE Athex Large Cap	14/09/2018	5,000	629,082	13,300	---	642,382	11,473,730.00	17.8612	0.43	30/06/2018

ETFs Notes

[1] - Units (T) = Units (T-1) + New Units (T-1) - Redemption Units (T-1)

[2] - The Creation / Redemption Units of T-1 are included.

Convertible Corporate Bonds - Regulated Market

Num Listed Bonds	Nominal price	Issue price	Today's Rate	Exp. Date	Duration (years)	Note	Coupon		Trading	Corporate Bonds	Price min	Price max	Closing price	Previous closing price/date		Volume	Transactions Value	Last order		Date	ear min	Year max
							Common	PREFERRED										Price	Buy / Sell			
179,991,941	0.30	0.30	1.00	11/10/2025	9	---	8	---	1	FORTHNET S.A. (Convertible)	---	---	---	---	---	---	---	1.0000	B	13/06/2018	100.0000	100.0000
1,117,598	13.76	9.77	0.00	21/10/2025	18	---	26	---	1	NIREUS S.A. (Convertible)	---	---	---	95.0000	11/09/2018	---	---	60.0011	B	14/09/2018	80.0000	95.0000

Corporate Bonds Notes

Transactions Volume = (Pieces) * (Nominal Price). Transactions Value = (Pieces) * (Nominal Price) * (price %) + (Accrued interest).
The price of a Bond is stated as a percentage (%) of Bond's Nominal Price.
Nominal Price in Euros (€), except if it is noted differently.

Non Convertible Corporate Bonds - Regulated Market

Num Listed Bonds	Nominal price	Issue price	Today's Rate	Exp. Date	Duration (years)	Note	Coupon		Trading	Corporate Bonds	Accrued Int.	Yield.T.Mat	Price min	Price max	Closing price	Previous closing price/date	Volume	Transactions Value	Last order		Date	ear min	Year max
							Common	Preferred											Price	Buy / Sell			
300,000	1,000.00	1,000.00	3.10	27/06/2022	5	---	3	---	1	MYTILINEOS HOLDINGS S.A. (Non Convertible)	7.1472	2.6950	101.0400	101.0500	101.0500	101.0700 13/09/2018	57,000	58,001.49	101.0500	B	14/09/2018	100.2928	103.4800
40,000,000	1.00	1.00	5.00	04/10/2021	5	---	8	---	1	HOUSEMARKET S.A. (Non Convertible)	0.0106	3.8920	---	---	---	102.0030 12/09/2018	---	---	101.6500	B	14/09/2018	98.9369	105.1000
50,000	1,000.00	1,000.00	4.25	20/06/2022	5	---	3	---	1	SYSTEMS SUNLIGHT S.A. (Non Convertible)	10.5069	4.3250	99.0000	99.0000	99.0000	98.3830 12/09/2018	10,000	10,005.07	99.0000	B	14/09/2018	98.0000	103.2000
90,000	1,000.00	1,000.00	3.00	11/05/2023	5	---	1	---	1	CORAL A.E. (Non Convertible)	10.8333	2.8640	---	---	---	100.4410 13/09/2018	---	---	100.6000	B	14/09/2018	100.0000	101.0000
120,000	1,000.00	1,000.00	3.95	04/04/2025	7	---	1	---	1	GEK TERNA S.A. (Non Convertible)	18.3236	3.8270	100.2900	100.2900	100.2900	100.0000 13/09/2018	50,000	51,061.18	99.9000	B	14/09/2018	99.4500	102.9900
200,000	1,000.00	1,000.00	3.50	21/03/2022	5	---	3	---	1	O.P.A.P. S.A. (Non Convertible)	17.5972	2.4670	---	---	---	102.9600 13/09/2018	---	---	102.9500	B	14/09/2018	101.5875	103.1500
60,000	1,000.00	1,000.00	3.85	21/07/2022	5	---	3	---	1	TERNA ENERGY FINANCE S.A. (Non Convertible)	6.0958	3.5150	100.6000	100.6100	100.6100	100.7730 13/09/2018	34,000	34,411.66	100.6100	B	14/09/2018	99.3154	103.4900
25,000	1,000.00	1,000.00	4.95	26/06/2023	5	---	1	---	1	B&F COMM. & GARM. INDUS. S.A. (Non Convertible)	11.5500	5.6760	96.8250	97.3000	97.0000	96.3300 13/09/2018	20,000	19,649.50	96.2301	B	14/09/2018	96.3300	100.0000

Corporate Bonds Notes

Transactions Volume = (Pieces) * (Nominal Price). Transactions Value = (Pieces) * (Nominal Price) * (price %) + (Accrued interest).
The price of a Bond is stated as a percentage (%) of Bond's Nominal Price.
Nominal Price in Euros (€), except if it is noted differently.

Government Bonds

Number Listed Bonds	Nominal price	Today's Rate	Accrued Interest Calc	Exp. Date [1]	Duration (years)	Note	Coupons Date	Curr. coupon value	Trading Unit	Government Bonds	Price min	Price max	Closing price	Previous closing price/date	Volume	Transactions Value	Price	Last order Buy / Sell	Date
3,000,000	1,000.00	4.38	Actual/Actual	01/08/2022	5	---	01/08	4.38	1	GGB-FXD-010822-05Y-4.375-1.000	---	---	---	---	---	---	55.0001	B	12/12/2017
4,355,990,324	1.00	3.50	Actual/Actual	30/01/2023	5	---	01/02 - 31/01	3.50	1	GGB-FXD-300123-05Y-3.500-1.00	---	---	---	94.5720 13/07/2018	---	---	83.0001	B	18/12/2017
5,962,747,327	1.00	3.75	Actual/Actual	30/01/2028	10	---	/02 - 01/02 - 31/	3.75	1	GGB-FXD-300128-10Y-3.750-1.00	---	---	---	85.4610 13/07/2018	---	---	77.0001	B	18/12/2017
6,091,218,404	1.00	3.90	Actual/Actual	30/01/2033	15	---	/02 - 01/02 - 31/	3.90	1	GGB-FXD-300133-15Y-3.900-1.00	---	---	---	78.6730 13/07/2018	---	---	70.0001	B	18/12/2017
4,805,399,486	1.00	4.00	Actual/Actual	30/01/2037	19	---	/02 - 01/02 - 31/	4.00	1	GGB-FXD-300137-19Y-4.000-1.00	---	---	---	77.0370 13/07/2018	---	---	69.0001	B	18/12/2017
4,603,713,186	1.00	4.20	Actual/Actual	30/01/2042	24	---	/02 - 01/02 - 31/	4.20	1	GGB-FXD-300142-24Y-4.200-1.00	---	---	---	77.7640 13/07/2018	---	---	67.0001	B	18/12/2017
550,418,123	1.00	3.00	Actual/Actual	24/02/2023	11	---	24/02	3.00	1	GGB-FXD-240223-11Y-2.000-1.00	---	---	---	10.0000 22/06/2015	---	---	---	---	---
445,007,576	1.00	3.00	Actual/Actual	24/02/2024	12	---	24/02	3.00	1	GGB-FXD-240224-12Y-2.000-1.00	---	---	---	10.0000 22/06/2015	---	---	---	---	---
423,674,226	1.00	3.00	Actual/Actual	24/02/2025	13	---	24/02	3.00	1	GGB-FXD-240225-13Y-2.000-1.00	---	---	---	10.0000 22/06/2015	---	---	---	---	---
212,292,153	1.00	3.00	Actual/Actual	24/02/2026	14	---	24/02	3.00	1	GGB-FXD-240226-14Y-2.000-1.00	---	---	---	10.0000 22/06/2015	---	---	---	---	---
160,621,352	1.00	3.00	Actual/Actual	24/02/2027	15	---	24/02	3.00	1	GGB-FXD-240227-15Y-2.000-1.00	---	---	---	10.0000 22/06/2015	---	---	---	---	---
183,244,055	1.00	3.00	Actual/Actual	24/02/2028	16	---	24/02	3.00	1	GGB-FXD-240228-16Y-2.000-1.00	---	---	---	10.0000 22/06/2015	---	---	---	---	---
164,802,894	1.00	3.00	Actual/Actual	24/02/2029	17	---	24/02	3.00	1	GGB-FXD-240229-17Y-2.000-1.00	---	---	---	10.0000 22/06/2015	---	---	---	---	---
165,460,943	1.00	3.00	Actual/Actual	24/02/2030	18	---	24/02	3.00	1	GGB-FXD-240230-18Y-2.000-1.00	---	---	---	10.0000 22/06/2015	---	---	---	---	---
129,007,241	1.00	3.00	Actual/Actual	24/02/2031	19	---	24/02	3.00	1	GGB-FXD-240231-19Y-2.000-1.00	---	---	---	10.0000 22/06/2015	---	---	---	---	---
126,192,683	1.00	3.00	Actual/Actual	24/02/2032	20	---	24/02	3.00	1	GGB-FXD-240232-20Y-2.000-1.00	---	---	---	10.0000 22/06/2015	---	---	---	---	---
146,905,168	1.00	3.00	Actual/Actual	24/02/2033	21	---	24/02	3.00	1	GGB-FXD-240233-21Y-2.000-1.00	---	---	---	10.0000 22/06/2015	---	---	---	---	---
154,475,606	1.00	3.00	Actual/Actual	24/02/2034	22	---	24/02	3.00	1	GGB-FXD-240234-22Y-2.000-1.00	---	---	---	10.0000 22/06/2015	---	---	---	---	---
144,429,441	1.00	3.00	Actual/Actual	24/02/2035	23	---	24/02	3.00	1	GGB-FXD-240235-23Y-2.000-1.00	---	---	---	10.0000 22/06/2015	---	---	---	---	---
166,211,676	1.00	3.00	Actual/Actual	24/02/2036	24	---	24/02	3.00	1	GGB-FXD-240236-24Y-2.000-1.00	---	---	---	10.0000 22/06/2015	---	---	---	---	---
145,461,669	1.00	3.00	Actual/Actual	24/02/2037	25	---	24/02	3.00	1	GGB-FXD-240237-25Y-2.000-1.00	---	---	---	10.0000 22/06/2015	---	---	---	---	---
146,941,087	1.00	3.00	Actual/Actual	24/02/2038	26	---	24/02	3.00	1	GGB-FXD-240238-26Y-2.000-1.00	---	---	---	10.0000 22/06/2015	---	---	---	---	---
135,115,612	1.00	3.00	Actual/Actual	24/02/2039	27	---	24/02	3.00	1	GGB-FXD-240239-27Y-2.000-1.00	---	---	---	10.0000 22/06/2015	---	---	---	---	---
141,909,637	1.00	3.00	Actual/Actual	24/02/2040	28	---	24/02	3.00	1	GGB-FXD-240240-28Y-2.000-1.00	---	---	---	10.0000 22/06/2015	---	---	---	---	---
136,788,720	1.00	3.00	Actual/Actual	24/02/2041	29	---	24/02	3.00	1	GGB-FXD-240241-29Y-2.000-1.00	---	---	---	10.0000 22/06/2015	---	---	---	---	---
163,643,410	1.00	3.00	Actual/Actual	24/02/2042	30	---	24/02	3.00	1	GGB-FXD-240242-30Y-2.000-1.00	---	---	---	10.0000 22/06/2015	---	---	---	---	---
742,153	1,000.00	0.93	FLR Actual/360	10/08/2019	5	---	10/02 - 10/08	---	1	GGB-FLT-100819-05Y-0.934-1.000	---	---	---	---	---	---	50.0001	B	12/12/2017
3,000,000	1,000.00	3.38	Actual/Actual	15/02/2025	7	---	15/02	3.38	1	GGB-FXD-150225-07Y-3.375-1.000	---	---	---	---	---	---	---	---	---
2,456,470	1,000.00	4.75	Actual/Actual	17/04/2019	5	---	17/04	4.75	1	GGB-FXD-170419-05Y-4.750-1.000	---	---	---	---	---	---	---	---	---

Government Bonds Notes

Transactions Volume = (Pieces) * (Nominal Price). Transactions Value = (Pieces) * (Nominal Price) * (price %) + (Accrued interest).
The Value of current coupon for the issues with NV 0.01 euro refers to NV 100 euros
FLR: Floating Interest Rate.
[1] - The Expiration Date of the interest bearing period and the Date for coupon payment.

Treasury Bills & Zero Coupon Government Bonds

	13-Week Maturity								26-Week Maturity								52-Week Maturity										
Issue Date	Exp. Date	Initial Rate	Num Listed Bonds	Nominal price	Issue price	Last Trade Price	Last Trade Date	Volume Traded	Note	Exp. Date	Initial Rate	Num Listed Bonds	Nominal price	Issue price	Last Trade Price	Last Trade Date	Volume Traded	Note	Exp. Date	Initial Rate	Num Listed Bonds	Nominal price	Issue price	Last Trade Price	Last Trade Date	Volume Traded	Note
16/03/2018	---	---	---	---	---	---	---	---	---	---	---	---	---	---	---	---	---	---	15/03/2019	1.25	1,000,000	1,000.00	987.52	---	---	---	---
15/06/2018	---	---	---	---	---	---	---	---	---	---	---	---	---	---	---	---	---	---	14/06/2019	1.09	1,000,000	1,000.00	989.10	---	---	---	---

Bonds in Circulation	Currency / Min nominal traded Value	Coupons Payment Date	Current Coupon Value	Note	Coupon	Trading Unit	Issue Date	Duration (years)	Today's Interest	A.I.C in days	Bonds	Last price of previous days		Last Outcry in Cash (euro)			Trades in	Life	Life
													Price	Buy / Sell	Date	Pieces	min	Max	
Corporate Bonds in Foreign Currency and Euro																			
103,746	GBP / 10	01/12	0.25	---	59	1	01/12/1930	98	2.5	360	National Mortgage Bank	2.27	05/02/1996	2.27	S	05/02/1996	---	2.27	2.27
0	GBP / 10	01/12	0.25	---	61	1	01/12/1928	100	2.5	360	National Mortgage Bank	---	---	---	---	---	---	---	---

Government Bonds Notes

A.I.C: Accrued Interest Calculation base.
FLR: Floating Interest Rate.
The minimum tradeable Nominal Value for all Demeterialised Government Titles is 100 Euros.
(μτφρ-0)

Athex & ATHEXClear Members List

Member Name			Stock Market			Derivatives Market		ATHEXClear Member	
Address	Phone	Fax	Market Member	Remote Member	Market Maker	Proprietary	Market Maker	General Clearing	Direct Clearing
A. SARRIS SECURITIES S.A.			a						
6, DRAGATSANIOU ATHINA	+30 2103367700	210-3312324							
ALPHA BANK A.E.								a	
40, STADIOU STR ATHINA	(210)-3260000 (210)-3265546	(210)-3264116 (210)-3265811							
103, AVE. ATHINON ATHINA	+30 2103436820	210-3436270							
ALPHA FINANCE INVESTMENT SERVICES S.A.			a		a	a	a		a
5, MERLIN ATHINA	+30 2103677400	210-33311193							
ARDU PRIME SECURITIES S.A			a						
12-14, KARAGIORGI SERVIAS ATHINA	+30 2103800820	210-3000854							
ARGUS STOCKBROKERS LTD			a	a		a			
25 , DIMOSTHENI SEVERI AVE NICOSIA	+357 22717000	0035722717070							
ATLANTIC SECURITIES LIMITED			a	a					
37, PRODROMOU NICOSIA	+357 22445400	00357 22661914							
AXIA VENTURES GROUP LTD			a	a					
, KRANIDIOTI 10, OFFICE 102 NICOSIA	+357 22742000	357 22742001							
AXON SECURITIES S.A.			a			a			
48, STADIOU ATHINA	+30 2103363800	210-3243903							
BANK OF AMERICA MERRILL LYNCH			a	a					
2 , KING EDWARD STREET LONDON	+44 20276281000								
BETA SECURITIES S.A.			a		a	a			a
29 , ALEXANDRAS AVEN. & VRAILA ATHINA	+30 2106478900	210-6410139							
BNP PARIBAS SECURITIES SERVICES								a	
2, LAMPSAKOU ATHINA	+30 2107468500	210-7468579-581							
CAPITAL SECURITIES S.A.			a			a			
58, MITROPOLEOS ATHINA	+30 2103369700	+30 210 3369820							
CFS SECURITIES-INVESTMENT SERVICES S.A.			a						
3, PAPARRIGOPOULOU ATHINA	+30 2103360800	+30 210-3360980							
CITIGROUP GLOBAL MARKET LTD			a	a					
1, CITIGROUP CENTER , CANADA SQ., CANARY WHARF LONDON	+44 02079864000								
CREDIT SUISSE SECURITIES (EUROPE) LIMITED			a	a					
1 , CABOT SQUARE LONDON	+44 2078888888								
CYCLOS SECURITIES S.A.			a			a			a
39, PANEPISTIMIOU ATHINA	+30 2103364300	+30 210-3239122							
D.A. TSEKOURAS SEC. S.A.			a						
33, STADIOU ATHINA	+30 2103245100	210-3211997							
DEUTSCHE BANK S.A.			a	a		a			
1 , GREAT WINCHESTER STREET LONDON	+44 20 754 54209	00441133361437							
DYNAMIC SECURITIES S.A.			a			a			a
8, OMIROU ATHINA	+30 2103677700	210-3677777							
EUROBANK EQUITIES INVESTMENT FIRM S.A			a		a	a	a		a
, FILELLINON 10 & XENOFONTOS 13 ATHINA	+30 2103720000	210-3720001							
EUROBANK ERGASIAS S.A.								a	
8, OTHONOS STR. ATHINA	(210)-3337969	(210)-3245916							
8, OTHONOS ATHINA	+30 2103337000	210-3245916							
8, OTHONOS STR. ATHINA	(210)-3337000	(210)-3233866							
EUROCORP INVESTMENT SERVICES S.A.			a			a			a
14, FILIKIS ETERIAS SQ, ATHINA	+30 2107263500	2107263666							
EUROTRUST INVESTMENT FIRM SA			a						
113, SEVASTOUPOLEOS ATHINA	+30 2103363100	+30 210-3238334							
EUROXX SECURITIES S.A.			a		a	a	a		a
7, PALAIOLOGOU CHALANDRI	(210)-6879400	(210)-6879401							
7, PALEOLOGOU CHALANDRI	+30 2106879400	210-6879401							
G. A. PERVANAS SECURITIES-INVESTMENT SERVICES CO S.A.			a						
7-9, SOFOKLEOUS ATHINA	+30 2103727200	210-3210-291							
GLOBAL CAPITAL SECURITIES AND FINANCIAL SERVICES LTD			a	a					
50, AVE. ARCHIEPISKOPOU MAKARIOU NICOSIA	+357 22710710	357 22339332							
HELLENIC BANK (INVESTMENTS) LTD				a					
, AVE.KYRIAKOU MATSI 31 - PO BOX 24747 NICOSIA	+357 22500100	357 22500110							
HELLENIC-AMERICAN SECURITIES S.A.			a		a	a			a
27, ANDREA PAPANDREOU ATHINA	+30 2103311100	+30 210-3215968							
HSBC FRANCE								a	
109-111, AVE. MESOGION ATHINA	+30 2106960000	210-6929336							

Athex & ATHEXClear Members List

Member Name			Stock Market			Derivatives Market		ATHEXClear Member	
Address	Phone	Fax	Market Member	Remote Member	Market Maker	Proprietary	Market Maker	General Clearing	Direct Clearing
INDEX SECURITIES S.A.			a						
6, DRAGATSANIOU ATHINA	+30 2103213920	+30 210-3213216							
INVESTMENT BANK OF GREECE S.A.			a		a	a	a	a	
32 , EGIALIAS & PARADISOU MAROUSI	+30 2108173111	+30 210-6896325							
J. CHR. MAVRIKIS SECURITIES S.A.			a						
5, SOFOKLEOUS ATHINA	+30 2103216730	210-3217767							
KAPPA SECURITIES S.A.			a			a			
15, VALAORITOU ATHINA	+30 2103678600	+30 210-3641002							
KARAMANOF SECURITIES AND INVESTMENT SERVICES S.A.			a			a			
2, SQ. AGION THEODORON ATHINA	+30 2103212947	+30 210-3217088							
LAIKI FINANCIAL SERVICES LTD				a					
26, AVE. VYRONOS NICOSIA	357 22367367	357 22718567							
LEON DEPOLAS SECURITIES S.A.			a		a	a			
1, CHRISTOU LADA ATHINA	+30 2103213276	+30 210-3211618							
MEGA EQUITY SECURITIES & FINANCIAL SERVICES PUBLIC LTD			a	a		a			
42-44, AVE. GRIVA DIGENI NICOSIA	+357 22711711	357 22711811							
MERIT SECURITIES S.A			a		a	a			a
5, SOFOKLEOUS ATHINA	+30 2141008800	210-6971830							
N. CHRYSOCHOIDIS STOCK BROKERAGE I.S.S.A.			a			a			a
7-9, SOFOKLEOUS ATHINA	+30 2103213913	+30 210-3216115							
NATIONAL BANK OF GREECE S.A.			a		a	a		a	
68, AKADIMIAS STR. ATHINA	(210)-3328817	(210)-3328678							
86, AIOLOU STR. ATHINA	(210)-3341000	(210)-3228187							
NATIONAL SECURITIES S.A			a		a	a	a		
66, KIFISIAS AVE , BUILDING A ATHINA	+30 2107720000	+30 210-7720002							
NUNTIUS BROKERAGE AND INVESTMENT SERVICES S.A			a						
6, DRAGATSANIOU ATHINA	+30 2103350599	+30210-3254846							
ONE PLUS CAPITAL LIMITED			a	a					
, 75 PRODROMOU AVENUE, ONEWORLD PARKVIEW HOUSE, 3RD FLOOR, Nicosia	+357 22873760								
PANTELAKIS SECURITIES S.A.			a		a	a	a		
57, ETHNIKIS ANTISTASIS B CHALANDRI	+30 2106965000	210-6929550							
PEGASUS SECURITIES S.A			a			a			
17 , VALAORITOU & AMERIKIS ATHINA	+30 2103670700	+30 210-3670760							
PIRAEUS BANK S.A.			a			a		a	
4, AMERIKIS STR ATHINA	(210)-3335918	(210)-3254207							
4, AMERIKIS STR. ATHINA	(210)-3335000	(210)-3335079							
4, AMERIKIS ATHINA	+30 2103335000	210-3335079							
PIRAEUS SECURITIES S.A.			a		a	a	a		a
10, STADIOU ATHINA	+30 2103354100	210-3354170							
PRELIUM INVESTMENT SERVICES S.A.			a			a			
342, KIFISIAS ATHINA	+30 2103677044	+30 210-6926403							
PROCHOICE SECURITIES LTD			a	a					
57, SPYROU KYPRIANOY NICOSIA	+357-24-661192	+357-24-662464							
SHARELINK SECURITIES-FINANCIAL SERVICES LTD			a	a		a			
6 , THEOTOKI MEGARO ELLINA NICOSIA	+357 22554200	+357 22750852							
SOCIETE GENERALE S.A.			a	a		a			
, 17 COURS VALMY 92987 PUTEAUX - LA DEFENSE PARIS	+33 157290504	+33142138697							
SOLIDUS SECURITIES S.A			a			a			a
64, LOUIZIS RIANCOUR ATHINA	+30 2106900600	210-6985421							
ST. EM. LAVRENTAKIS SECURITIES S.A.			a			a			
7-9, SOFOKLEOUS ATHINA	+30 2103213336	+30 210-3246572							
THE CYPRUS INVESTMENT & SECURITIES CORPORATION LTD			a	a					
154, LIMASSOL AVENUE, STROVOLOS NICOSIA	+357 22121700	357 22338800							
UBS LIMITED			a	a					
1 , FINSBURY AVENUE LONDON	+44 2075687135								

List of Stocks under Market Making operations

Securities	Stock Category
Market Maker	Start Market Making
FOLLI FOLLIE (CR)	Suspension Status
NATIONAL SECURITIES S.A.	17/02/2014
PIRAEUS SECURITIES S.A.	04/05/2015
ADMIE (IPTO) HOLDING S.A. (CR)	Main Market
PIRAEUS SECURITIES S.A.	29/06/2017
ALPHA BANK (CR)	Main Market
ALPHA FINANCE INVESTMENT SERVICES S.A.	29/02/2016
EUROBANK EQUITIES INVESTMENT FIRM S.A	24/10/2012
LEON DEPOLAS SECURITIES S.A.	04/01/2016
MERIT SECURITIES S.A	03/09/2013
NATIONAL SECURITIES S.A	15/01/2013
PIRAEUS SECURITIES S.A.	28/05/2013
ALUMIL (CR)	Main Market
BETA SECURITIES S.A.	18/07/2013
ATTICA BANK S.A. (CR)	Main Market
BETA SECURITIES S.A.	02/06/2014
EUROXX SECURITIES S.A.	22/01/2016
PIRAEUS SECURITIES S.A.	20/09/2017
ATTICA HOLDINGS (CR)	Main Market
HELLENIC-AMERICAN SECURITIES S.A.	28/12/2017
AUTOHELLAS SA (CR)	Main Market
EUROXX SECURITIES S.A.	02/07/2018
BYTE COMPUTER SA (CR)	Main Market
MERIT SECURITIES S.A	04/08/2013
CC HBC AG (CR)	Main Market
EUROBANK EQUITIES INVESTMENT FIRM S.A	23/10/2013
NATIONAL SECURITIES S.A	29/04/2013
PIRAEUS SECURITIES S.A.	04/05/2015
CENERGY HOLDINGS (CB)	Main Market
ALPHA FINANCE INVESTMENT SERVICES S.A.	02/01/2017
EUROBANK EQUITIES INVESTMENT FIRM S.A	02/01/2017
EKTER SA (CR)	Main Market
EUROBANK EQUITIES INVESTMENT FIRM S.A	16/10/2017
LEON DEPOLAS SECURITIES S.A.	21/05/2018
ELASTRON (CR)	Main Market
LEON DEPOLAS SECURITIES S.A.	20/02/2017
ELLAKTOR (CR)	Main Market
EUROBANK EQUITIES INVESTMENT FIRM S.A	01/06/2013
NATIONAL SECURITIES S.A	25/06/2013
ELTON SA (CR)	Main Market
BETA SECURITIES S.A.	03/09/2013
ELVALHALCOR (CB)	Main Market
ALPHA FINANCE INVESTMENT SERVICES S.A.	07/05/2018
EUROBANK EQUITIES INVESTMENT FIRM S.A	07/05/2018
EUROBANK ERGASIAS (CR)	Main Market
ALPHA FINANCE INVESTMENT SERVICES S.A.	08/01/2013
EUROBANK EQUITIES INVESTMENT FIRM S.A	01/06/2013
HELLENIC-AMERICAN SECURITIES S.A.	25/07/2014
MERIT SECURITIES S.A	06/11/2017
NATIONAL SECURITIES S.A	01/01/2017
PIRAEUS SECURITIES S.A.	28/09/2013
FOURLIS (CR)	Main Market
EUROBANK EQUITIES INVESTMENT FIRM S.A	01/12/2016
EUROXX SECURITIES S.A.	01/12/2016
PIRAEUS SECURITIES S.A.	06/03/2017
GEK TERNA (CR)	Main Market
HELLENIC-AMERICAN SECURITIES S.A.	07/09/2015
GR. SARANTIS S.A. (CR)	Main Market
ALPHA FINANCE INVESTMENT SERVICES S.A.	19/06/2018
BETA SECURITIES S.A.	14/05/2013
EUROBANK EQUITIES INVESTMENT FIRM S.A	24/10/2016
GRIVALIA PROPERTIES (CR)	Main Market
EUROBANK EQUITIES INVESTMENT FIRM S.A	20/09/2017
HELLENIC EXCHANGES-A.S.E. (CR)	Main Market
HELLENIC-AMERICAN SECURITIES S.A.	01/09/2014
NATIONAL SECURITIES S.A	25/06/2013
PIRAEUS SECURITIES S.A.	04/05/2015

List of Stocks under Market Making operations

Securities	Stock Category
Market Maker	Start Market Making
HELLENIC PETROLEUM (CR)	Main Market
HELLENIC-AMERICAN SECURITIES S.A.	14/09/2015
PIRAEUS SECURITIES S.A.	20/03/2017
HYGEIA SA (CR)	Main Market
HELLENIC-AMERICAN SECURITIES S.A.	18/04/2016
INTRACOM CONSTR. (CR)	Main Market
MERIT SECURITIES S.A	05/06/2018
INTRACOM HOLDINGS (CR)	Main Market
ALPHA FINANCE INVESTMENT SERVICES S.A.	03/08/2018
INTRALOT (CR)	Main Market
ALPHA FINANCE INVESTMENT SERVICES S.A.	03/07/2017
EUROBANK EQUITIES INVESTMENT FIRM S.A	18/12/2017
HELLENIC-AMERICAN SECURITIES S.A.	30/05/2018
PANTELAKIS SECURITIES S.A.	07/05/2018
PIRAEUS SECURITIES S.A.	28/09/2013
J & P - AVAX SA (CR)	Main Market
EUROBANK EQUITIES INVESTMENT FIRM S.A	14/12/2015
JUMBO SA (CR)	Main Market
MERIT SECURITIES S.A	06/11/2017
PIRAEUS SECURITIES S.A.	06/03/2017
KLOUKINAS - LAPPAS SA (CR)	Main Market
BETA SECURITIES S.A.	22/09/2014
KRI-KRI S.A. (CR)	Main Market
EUROBANK EQUITIES INVESTMENT FIRM S.A	07/05/2018
LEON DEPOLAS SECURITIES S.A.	16/01/2017
LAMDA DEVELOPMENT SA (CR)	Main Market
EUROBANK EQUITIES INVESTMENT FIRM S.A	08/12/2014
PANTELAKIS SECURITIES S.A.	06/11/2017
PIRAEUS SECURITIES S.A.	29/06/2017
LAMPSA HOTEL SA (CR)	Main Market
LEON DEPOLAS SECURITIES S.A.	16/01/2017
MARFIN INVESTMENT GROUP (CR)	Main Market
HELLENIC-AMERICAN SECURITIES S.A.	25/07/2014
LEON DEPOLAS SECURITIES S.A.	20/02/2017
PIRAEUS SECURITIES S.A.	02/02/2013
MLS MULTIMEDIA SA (CR)	Main Market
HELLENIC-AMERICAN SECURITIES S.A.	07/12/2015
MOTOR OIL (CR)	Main Market
HELLENIC-AMERICAN SECURITIES S.A.	01/09/2014
NATIONAL SECURITIES S.A	17/02/2014
PIRAEUS SECURITIES S.A.	04/05/2015
MYTILINEOS HOLDINGS (CR)	Main Market
EUROBANK EQUITIES INVESTMENT FIRM S.A	20/09/2017
NATIONAL SECURITIES S.A	25/06/2013
PIRAEUS SECURITIES S.A.	04/05/2015
NATIONAL BANK (CR)	Main Market
ALPHA FINANCE INVESTMENT SERVICES S.A.	08/01/2013
EUROBANK EQUITIES INVESTMENT FIRM S.A	24/10/2012
HELLENIC-AMERICAN SECURITIES S.A.	25/07/2014
LEON DEPOLAS SECURITIES S.A.	20/04/2015
MERIT SECURITIES S.A	03/09/2013
NATIONAL SECURITIES S.A	28/02/2013
PIRAEUS SECURITIES S.A.	08/09/2013
OPAP (CR)	Main Market
ALPHA FINANCE INVESTMENT SERVICES S.A.	08/01/2013
EUROBANK EQUITIES INVESTMENT FIRM S.A	24/10/2012
HELLENIC-AMERICAN SECURITIES S.A.	25/07/2014
MERIT SECURITIES S.A	20/03/2017
NATIONAL SECURITIES S.A	15/01/2013
PIRAEUS SECURITIES S.A.	04/05/2015
OTE (CR)	Main Market
ALPHA FINANCE INVESTMENT SERVICES S.A.	08/01/2013
EUROBANK EQUITIES INVESTMENT FIRM S.A	24/10/2012
HELLENIC-AMERICAN SECURITIES S.A.	25/07/2014
MERIT SECURITIES S.A	20/03/2017
NATIONAL SECURITIES S.A	01/12/2012
PIRAEUS SECURITIES S.A.	08/09/2013
PAPOUTSANIS (CR)	Main Market
BETA SECURITIES S.A.	25/11/2013

List of Stocks under Market Making operations

Securities	Stock Category
Market Maker	Start Market Making
PETROPOULOS PETROS (CR)	Main Market
BETA SECURITIES S.A.	28/05/2013
PIRAEUS BANK (CR)	Main Market
EUROBANK EQUITIES INVESTMENT FIRM S.A	23/10/2012
EUROXX SECURITIES S.A.	15/02/2016
MERIT SECURITIES S.A	16/09/2013
NATIONAL SECURITIES S.A	02/06/2013
PIRAEUS SECURITIES S.A.	16/02/2013
PLAISIO COMPUTERS SA (CR)	Main Market
BETA SECURITIES S.A.	05/05/2014
EUROBANK EQUITIES INVESTMENT FIRM S.A	02/03/2015
PPC (CR)	Main Market
ALPHA FINANCE INVESTMENT SERVICES S.A.	08/01/2013
ALPHA FINANCE INVESTMENT SERVICES S.A.	23/07/2018
EUROBANK EQUITIES INVESTMENT FIRM S.A	23/10/2012
HELLENIC-AMERICAN SECURITIES S.A.	28/12/2017
MERIT SECURITIES S.A	06/11/2017
NATIONAL SECURITIES S.A	26/03/2013
PIRAEUS SECURITIES S.A.	28/09/2013
QUALITY & RELIABILITY SA (CR)	Main Market
BETA SECURITIES S.A.	20/08/2014
QUEST HOLDINGS (CR)	Main Market
BETA SECURITIES S.A.	26/03/2018
S.KANAKIS SA (CR)	Main Market
BETA SECURITIES S.A.	01/10/2013
THRACE PLASTICS SA (CR)	Main Market
ALPHA FINANCE INVESTMENT SERVICES S.A.	26/03/2018
EUROBANK EQUITIES INVESTMENT FIRM S.A	26/03/2018
TITAN CEMENT (CR)	Main Market
NATIONAL SECURITIES S.A	17/02/2014
PIRAEUS SECURITIES S.A.	04/05/2015
VIOHALCO SA/NV (CB)	Main Market
ALPHA FINANCE INVESTMENT SERVICES S.A.	17/02/2014
EUROBANK EQUITIES INVESTMENT FIRM S.A	01/01/2017
MERIT SECURITIES S.A	17/03/2014

Underlying Asset				Derivatives Market														
Price max	Price min	Closing price	change	Delivery Month	Open price	Price max	Price min	Last price	Closing price	Last Bid	Last Ask	Fixing price*	Life high	Life low	Trades	Volume	Open Interest	
FTSE/Athex Large Cap																	(Trade Unit: 1 Index Point x 2€, Cash Settlement)	
1,807.02	1,785.22	1,795.87	0.50%	September 2018	1,795.00	1,809.00	1,782.50	1,797.00	1,797.00	---	---	1,796.75	2,047.50	---	181	1,176	7,910	
				October 2018	1,797.00	1,808.75	1,783.00	1,794.00	1,794.00	---	---	1,797.00	---	1,964.75	---	88	490	1,286
				November 2018	---	---	---	---	1,793.25	---	---	---	---	---	---	---	---	
				December 2018	---	---	---	---	1,796.75	---	---	---	---	---	---	---	---	
				March 2019	---	---	---	---	1,805.00	---	---	---	---	---	---	---	---	
				June 2019	---	---	---	---	1,814.75	---	---	---	---	---	---	---	---	

Underlying Asset				Derivatives Market														
Price max	Price min	Closing price	change	Delivery Month	Open price	Price max	Price min	Last price	Closing price	Last Bid	Last Ask	Fixing price*	Life high	Life low	Trades	Volume	Open Interest	
ADMIE (IPTO) HOLDING S.A. (CR)				(Contract Size: 100 Securities, Physical Delivery)														
1.578	1.55	1.56	0.65%	September 2018	1.55	1.56	1.55	1.56	1.56	---	---	1.55	1.86	---	35	1,922	6,796	
				December 2018	1.56	1.56	1.56	1.56	1.56	---	---	1.56	---	1.62	---	27	1,793	2,194
				March 2019	---	---	---	---	1.57	---	---	---	---	---	---	---	---	
				June 2019	---	---	---	---	1.57	---	---	---	---	---	---	---	---	
ALPHA BANK (CR)				(Contract Size: 100 Securities, Physical Delivery)														
1.283	1.212	1.276	4.16%	September 2018	1.24	1.29	1.21	1.27	1.27	---	---	1.28	2.13	---	422	12,606	31,940	
				December 2018	1.27	1.29	1.22	1.28	1.28	---	---	1.28	---	1.70	---	240	6,140	9,480
				March 2019	1.26	1.26	1.26	1.26	1.26	---	---	1.30	1.26	---	1	226	226	
				June 2019	---	---	---	---	1.24	---	---	---	---	---	---	---	---	
ATTICA BANK S.A. (CR)				(Contract Size: 100 Securities, Physical Delivery)														
0.182	0.175	0.1754	-3.31%	September 2018	0.180	0.180	0.180	0.180	0.180	---	---	0.177	0.284	---	1	1	637	
				December 2018	---	---	---	---	0.182	---	---	---	---	---	---	---	---	
				March 2019	---	---	---	---	0.183	---	---	---	---	---	---	---	---	
				June 2019	---	---	---	---	0.184	---	---	---	---	---	---	---	---	
CC HBC AG (CR)				(Contract Size: 100 Securities, Physical Delivery)														
29.22	28.86	29.01	0.59%	September 2018	29.20	29.20	28.76	28.76	28.76	---	---	28.88	31.34	---	11	47	274	
				December 2018	28.90	28.96	28.90	28.90	28.90	---	---	28.77	---	28.96	---	3	10	19
				March 2019	---	---	---	---	29.13	---	---	---	---	---	---	---	---	
				June 2019	---	---	---	---	29.29	---	---	---	---	---	---	---	---	
CENERGY HOLDINGS (CB)				(Contract Size: 100 Securities, Physical Delivery)														
1.146	1.1	1.118	0.00%	September 2018	1.12	1.12	1.11	1.11	1.11	---	---	1.11	1.38	---	7	42	4,490	
				December 2018	1.13	1.13	1.12	1.12	1.12	---	---	1.12	---	1.16	---	2	20	175
				March 2019	---	---	---	---	1.13	---	---	---	---	---	---	---	---	
				June 2019	---	---	---	---	1.14	---	---	---	---	---	---	---	---	
ELLAKTOR (CR)				(Contract Size: 100 Securities, Physical Delivery)														
1.69	1.62	1.628	-1.57%	September 2018	1.67	1.68	1.63	1.63	1.63	---	---	1.62	2.15	---	15	431	3,486	
				December 2018	1.67	1.67	1.64	1.64	1.64	---	---	1.63	---	1.79	---	13	430	484
				March 2019	---	---	---	---	1.67	---	---	---	---	---	---	---	---	
				June 2019	---	---	---	---	1.68	---	---	---	---	---	---	---	---	
EUROBANK ERGASIAS (CR)				(Contract Size: 100 Securities, Physical Delivery)														
0.623	0.5965	0.605	1.68%	September 2018	0.601	0.621	0.598	0.607	0.607	---	---	0.609	1.01	---	255	4,976	39,501	
				December 2018	0.615	0.622	0.600	0.610	0.610	---	---	0.614	---	0.716	---	183	5,447	7,753
				March 2019	---	---	---	---	0.601	---	---	---	---	---	---	---	---	
				June 2019	---	---	---	---	0.604	---	---	---	---	---	---	---	---	

Derivatives notes

Fixing prices and final open positions can be retrieved from the following path <http://www.helex.gr/el/web/guest/statistics-end-of-day-derivatives>

Underlying Asset				Derivatives Market														
Price max	Price min	Closing price	change	Delivery Month	Open price	Price max	Price min	Last price	Closing price	Last Bid	Last Ask	Fixing price*	Life high	Life low	Trades	Volume	Open Interest	
EYDAP S.A. (CR)				(Contract Size: 100 Securities, Physical Delivery)														
5.3	5.14	5.28	1.93%	September 2018	5.15	5.25	5.14	5.25	5.25	---	---	5.20	---	5.95	---	16	54	746
				December 2018	5.26	5.26	5.26	5.26	5.26	---	---	5.26		5.28	---	1	3	17
				March 2019	---	---	---	---	5.23	---	---	---	---	---	---	---	---	---
				June 2019	---	---	---	---	5.26	---	---	---	---	---	---	---	---	---
FOLLI FOLLIE (CR)				(Contract Size: 100 Securities, Physical Delivery)														
		4.8	0.00%	September 2018	---	---	---	---	4.80	---	---	5.13	---	---	---	---	---	5
				December 2018	---	---	---	---	4.83	---	---	---	---	---	---	---	---	---
				March 2019	---	---	---	---	4.85	---	---	---	---	---	---	---	---	---
				December 2019	---	---	---	---	4.92	---	---	5.07	---	---	---	---	---	1,735
FOURLIS (CR)				(Contract Size: 102 Securities, Physical Delivery)														
5.54	5.34	5.48	0.55%	September 2018	5.39	5.40	5.39	5.40	5.40	---	---	5.51	---	5.90	---	6	10	210
				December 2018	5.40	5.40	5.40	5.40	5.40	---	---	5.50		5.77	---	1	1	23
				March 2019	---	---	---	---	5.51	---	---	---	---	---	---	---	---	---
				June 2019	---	---	---	---	5.54	---	---	---	---	---	---	---	---	---
GEK TERNA (CR)				(Contract Size: 100 Securities, Physical Delivery)														
4.965	4.77	4.77	-1.65%	September 2018	4.92	4.95	4.80	4.83	4.83	---	---	4.82	---	5.55	---	49	348	6,396
				December 2018	4.92	5.17	4.75	4.75	4.75	---	---	4.88		5.17	---	28	88	185
				March 2019	---	---	---	---	4.90	---	---	---	---	---	---	---	---	---
				June 2019	---	---	---	---	4.93	---	---	---	---	---	---	---	---	---
GRIVALIA PROPERTIES (CR)				(Contract Size: 100 Securities, Physical Delivery)														
8.34	8.08	8.08	-0.98%	September 2018	8.28	8.28	8.28	8.28	8.28	---	---	8.16	---	9.29	---	2	23	147
				December 2018	8.35	8.35	8.35	8.35	8.35	---	---	8.23		8.35	---	1	22	22
				March 2019	---	---	---	---	8.24	---	---	8.24	---	8.38	---	---	---	43
				June 2019	---	---	---	---	8.29	---	---	---	---	---	---	---	---	---
HELLENIC EXCHANGES-A.S.E. (CR)				(Contract Size: 103 Securities, Physical Delivery)														
4.305	4.22	4.3	2.14%	September 2018	4.28	4.29	4.28	4.29	4.29	---	---	4.32	---	4.59	---	6	15	770
				December 2018	---	---	---	---	4.23	---	---	4.35		4.37	---	---	---	10
				March 2019	---	---	---	---	4.25	---	---	---	---	---	---	---	---	---
				June 2019	---	---	---	---	4.28	---	---	---	---	---	---	---	---	---
HELLENIC PETROLEUM (CR)				(Contract Size: 100 Securities, Physical Delivery)														
7.39	7.15	7.17	-0.69%	September 2018	7.34	7.35	7.20	7.20	7.20	---	---	7.21	---	8.32	---	10	72	2,897
				December 2018	7.31	7.36	7.21	7.21	7.21	---	---	7.17		7.45	---	8	47	270
				March 2019	---	---	---	---	7.29	---	---	---	---	---	---	---	---	---
				June 2019	---	---	---	---	7.33	---	---	---	---	---	---	---	---	---

Derivatives notes

Fixing prices and final open positions can be retrieved from the following path <http://www.helex.gr/el/web/guest/statistics-end-of-day-derivatives>

Underlying Asset				Derivatives Market														
Price max	Price min	Closing price	change	Delivery Month	Open price	Price max	Price min	Last price	Closing price	Last Bid	Last Ask	Fixing price*	Life high	Life low	Trades	Volume	Open Interest	
INTRACOM HOLDINGS (CR)				(Contract Size: 50 Securities, Physical Delivery)														
1.18	1.116	1.15	-6.96%	September 2018	1.16	1.16	1.14	1.14	1.14	---	---	1.15	1.16	---	3	14	3,677	
				December 2018	1.16	1.19	1.09	1.12	1.12	---	---	1.17	---	1.19	---	6	35	173
				March 2019	---	---	---	---	1.25	---	---	---	---	---	---	---	---	
				June 2019	---	---	---	---	1.26	---	---	---	---	---	---	---	---	
INTRALOT (CR)				(Contract Size: 100 Securities, Physical Delivery)														
0.617	0.55	0.57	-5.00%	September 2018	0.615	0.615	0.560	0.570	0.570	---	---	0.552	1.13	---	35	688	5,748	
				December 2018	0.602	0.607	0.561	0.569	0.569	---	---	0.568	---	0.740	---	15	800	957
				March 2019	---	---	---	---	0.606	---	---	---	---	---	---	---	---	
				June 2019	---	---	---	---	0.609	---	---	---	---	---	---	---	---	
JUMBO SA (CR)				(Contract Size: 100 Securities, Physical Delivery)														
12.94	12.6	12.62	-2.02%	September 2018	12.84	12.84	12.76	12.76	12.76	---	---	12.80	14.55	---	7	47	932	
				December 2018	12.63	12.83	12.60	12.60	12.60	---	---	12.72	---	13.05	---	8	25	127
				March 2019	---	---	---	---	13.01	---	---	---	---	---	---	---	---	
				June 2019	---	---	---	---	13.08	---	---	---	---	---	---	---	---	
LAMDA DEVELOPMENT SA (CR)				(Contract Size: 100 Securities, Physical Delivery)														
6.82	6.53	6.74	1.35%	September 2018	6.67	6.71	6.57	6.71	6.71	---	---	6.72	6.87	---	28	62	2,036	
				December 2018	6.69	6.73	6.62	6.69	6.69	---	---	6.76	---	6.95	---	10	118	250
				March 2019	---	---	---	---	6.72	---	---	---	---	---	---	---	---	
				June 2019	---	---	---	---	6.75	---	---	---	---	---	---	---	---	
MARFIN INVESTMENT GROUP (CR)				(Contract Size: 100 Securities, Physical Delivery)														
0.092	0.0883	0.0888	-1.33%	September 2018	0.092	0.092	0.089	0.089	0.089	---	---	0.089	0.126	---	46	11,485	44,543	
				December 2018	0.092	0.092	0.090	0.091	0.091	---	---	0.090	---	0.101	---	19	8,457	9,854
				March 2019	0.092	0.092	0.092	0.092	0.092	---	---	0.091	0.092	---	5	2,000	2,000	
				June 2019	---	---	---	---	0.091	---	---	---	---	---	---	---	---	
MOTOR OIL (CR)				(Contract Size: 100 Securities, Physical Delivery)														
20.7	19.84	20.6	1.23%	September 2018	19.98	20.52	19.80	20.52	20.52	---	---	20.36	20.80	---	36	93	662	
				December 2018	19.70	20.35	19.68	20.35	20.35	---	---	20.12	---	20.80	---	24	81	94
				March 2019	---	---	---	---	20.56	---	---	---	---	---	---	---	---	
				June 2019	---	---	---	---	20.67	---	---	---	---	---	---	---	---	
MYTILINEOS HOLDINGS (CR)				(Contract Size: 100 Securities, Physical Delivery)														
8.69	8.52	8.65	1.89%	September 2018	8.60	8.69	8.54	8.63	8.63	---	---	8.62	9.99	---	33	197	6,726	
				December 2018	8.57	8.71	8.57	8.68	8.68	---	---	8.68	---	8.74	---	38	258	625
				March 2019	---	---	---	---	8.58	---	---	8.72	8.73	---	---	---	53	
				June 2019	---	---	---	---	8.62	---	---	---	---	---	---	---	---	

Derivatives notes

Fixing prices and final open positions can be retrieved from the following path <http://www.helex.gr/el/web/guest/statistics-end-of-day-derivatives>

Underlying Asset				Derivatives Market														
Price max	Price min	Closing price	change	Delivery Month	Open price	Price max	Price min	Last price	Closing price	Last Bid	Last Ask	Fixing price*	Life high	Life low	Trades	Volume	Open Interest	
NATIONAL BANK (CR)				(Contract Size: 10 Securities, Physical Delivery)														
1.794	1.69	1.75	0.46%	September 2018	1.77	1.80	1.70	1.75	1.75	---	---	1.78	---	2.41	---	256	25,679	232,113
				December 2018	1.78	1.80	1.70	1.76	1.76	---	---	1.78		2.30	---	146	12,096	22,450
				March 2019	---	---	---	---	1.76	---	---	---	---	---	---	---	---	---
				June 2019	---	---	---	---	1.77	---	---	---	---	---	---	---	---	---
OPAP (CR)				(Contract Size: 100 Securities, Physical Delivery)														
9.09	8.92	9	0.00%	September 2018	9.05	9.05	8.97	9.00	9.00	---	---	8.92	---	9.91	---	23	374	3,282
				December 2018	8.92	9.03	8.92	8.97	8.97	---	---	8.92		9.16	---	13	225	340
				March 2019	9.03	9.03	9.03	9.03	9.03	---	---	8.92	---	9.16	---	2	200	460
				June 2019	---	---	---	---	9.14	---	---	---	---	---	---	---	---	---
OTE (CR)				(Contract Size: 100 Securities, Physical Delivery)														
10.93	10.56	10.64	-1.75%	September 2018	10.87	10.87	10.60	10.60	10.60	---	---	10.63	---	11.37	---	42	290	2,468
				December 2018	10.87	10.87	10.61	10.61	10.61	---	---	10.64		10.95	---	9	110	204
				March 2019	---	---	---	---	10.94	---	---	---	---	---	---	---	---	---
				June 2019	---	---	---	---	11.00	---	---	---	---	---	---	---	---	---
P.P.A. S.A. (CR)				(Contract Size: 100 Securities, Physical Delivery)														
16.4	15.92	16.2	1.89%	September 2018	16.22	16.24	16.22	16.24	16.24	---	---	16.41	---	17.50	---	6	271	314
				December 2018	16.30	16.30	16.30	16.30	16.30	---	---	16.49		16.48	---	1	70	70
				March 2019	16.42	16.42	16.42	16.42	16.42	---	---	16.59	---	16.48	---	4	200	364
				June 2019	---	---	---	---	16.15	---	---	---	---	---	---	---	---	---
PIRAEUS BANK (CR)				(Contract Size: 100 Securities, Physical Delivery)														
1.97	1.832	1.949	3.67%	September 2018	1.90	1.97	1.84	1.95	1.95	---	---	1.96	---	3.47	---	235	3,061	18,000
				December 2018	1.90	1.98	1.84	1.97	1.97	---	---	1.96		2.47	---	52	823	1,589
				March 2019	---	---	---	---	1.90	---	---	---	---	---	---	---	---	---
				June 2019	---	---	---	---	1.91	---	---	---	---	---	---	---	---	---
PPC (CR)				(Contract Size: 100 Securities, Physical Delivery)														
1.472	1.429	1.44	0.21%	September 2018	1.45	1.48	1.42	1.45	1.45	---	---	1.46	---	2.38	---	69	464	11,307
				December 2018	1.49	1.49	1.43	1.45	1.45	---	---	1.48		1.75	---	43	422	1,247
				March 2019	---	---	---	---	1.45	---	---	---	---	---	---	---	---	---
				June 2019	---	---	---	---	1.46	---	---	---	---	---	---	---	---	---
TERNA ENERGY (CR)				(Contract Size: 104 Securities, Physical Delivery)														
6.29	6.21	6.27	0.48%	September 2018	6.24	6.28	6.24	6.28	6.28	---	---	6.25	---	6.28	---	21	85	6,505
				December 2018	6.27	6.32	6.25	6.31	6.31	---	---	6.29		6.32	---	18	76	608
				March 2019	---	---	---	---	6.30	---	---	---	---	---	---	---	---	---
				June 2019	---	---	---	---	6.34	---	---	---	---	---	---	---	---	---

Derivatives notes

Fixing prices and final open positions can be retrieved from the following path <http://www.helex.gr/el/web/guest/statistics-end-of-day-derivatives>

Underlying Asset				Derivatives Market															
Price max	Price min	Closing price	change	Delivery Month	Open price	Price max	Price min	Last price	Closing price	Last Bid	Last Ask	Fixing price*	Life high	Life low	Trades	Volume	Open Interest		
TITAN CEMENT (CR)																		(Contract Size: 102 Securities, Physical Delivery)	
20.3	19.64	19.94	-0.55%	September 2018	20.10	20.10	19.78	19.78	19.78	---	---	19.75	21.69	---	16	26	182		
				December 2018	20.25	20.25	19.75	19.80	19.80	---	---	19.80	---	20.25	---	9	12	19	
				March 2019	---	---	---	---	20.25	---	---	---	---	---	---	---	---		
				June 2019	---	---	---	---	20.36	---	---	---	---	---	---	---	---		
VIOHALCO SA/NV (CB)																		(Contract Size: 100 Securities, Physical Delivery)	
3.005	2.89	2.91	0.34%	September 2018	2.93	2.99	2.93	2.93	2.93	---	---	2.93	3.58	---	63	1,514	4,545		
				December 2018	2.86	2.99	2.86	2.94	2.94	---	---	2.95	---	3.07	---	30	1,352	2,206	
				March 2019	---	---	---	---	2.93	---	---	---	---	---	---	---	---		
				June 2019	---	---	---	---	2.95	---	---	---	---	---	---	---	---		

FTSE/Athex Large Cap

(Trade Unit: 1 Index Point x 2€ - Exercise Style: European, Cash Settlement)

Call Options																Put Options																			
September 2018								October 2018								Other Months		September 2018								October 2018								Other Months	
Exercise Price	Open price	Price max	Price min	Last price	Closing price	Volume	Open Interest	Open price	Price max	Price min	Last price	Closing price	Volume	Open Interest	Volume	Open Interest	Open price	Price max	Price min	Last price	Closing price	Volume	Open Interest	Open price	Price max	Price min	Last price	Closing price	Volume	Open Interest	Volume	Open Interest	Exercise Price		
1,650	0.00	0.00	0.00	-	136.00	-	-	0.00	0.00	0.00	-	147.00	-	-			0.00	0.00	0.00	-	0.31	-	-	0.00	0.00	0.00	-	10.25	-	-			1,650		
1,675	0.00	0.00	0.00	-	112.00	-	-	0.00	0.00	0.00	-	127.00	-	-			0.00	0.00	0.00	-	0.94	-	-	0.00	0.00	0.00	-	15.00	-	-			1,675		
1,700	0.00	0.00	0.00	-	88.50	-	-	0.00	0.00	0.00	-	108.00	-	-			0.00	0.00	0.00	-	2.50	-	-	0.00	0.00	0.00	-	21.00	-	-			1,700		
1,725	0.00	0.00	0.00	-	66.50	-	-	0.00	0.00	0.00	-	90.50	-	-			0.00	0.00	0.00	-	5.70	-	-	0.00	0.00	0.00	-	28.75	-	-			1,725		
1,750	0.00	0.00	0.00	-	47.25	-	-	0.00	0.00	0.00	-	74.50	-	-			0.00	0.00	0.00	-	11.50	-	-	34.50	34.50	34.50	34.50	34.50	34.50	3	20			1,750	
1,775	37.00	37.00	37.00	37.00	37.00	1	1	0.00	0.00	0.00	-	61.00	-	-	14.50	37.00	14.50	14.50	14.50	14.50	14.50	1	9	43.00	46.00	43.00	46.00	46.00	46.00	42	40			1,775	
1,800	23.75	23.75	23.00	23.00	23.00	40	43	55.50	55.50	55.50	55.50	55.50	30	-	0.00	23.75	0.00	-	33.50	-	47		56.00	56.00	56.00	56.00	56.00	56.00	20	60			1,800		
1,825	0.00	0.00	0.00	-	11.00	-	48	0.00	0.00	0.00	-	38.50	-	7	40.00	0.00	40.00	40.00	40.00	40.00	1	59	0.00	0.00	0.00	-	76.50	-	80			1,825			
1,850	4.80	4.80	4.80	4.80	4.80	50	76	31.50	31.50	31.50	31.50	31.50	20	80			0.00	4.80	0.00	-	69.50	-	2,211	85.00	86.00	85.00	86.00	86.00	86.00	20	60			1,850	
1,875	0.00	0.00	0.00	-	2.70	-	10	21.00	21.00	21.00	21.00	21.00	1	40			0.00	0.00	0.00	-	91.50	-	69	0.00	0.00	0.00	-	111.00	-	60			1,875		
1,900	0.00	0.00	0.00	-	1.20	-	114	17.00	17.00	17.00	17.00	17.00	3	685			0.00	0.00	0.00	-	115.00	-	360	0.00	0.00	0.00	-	130.00	-	20			1,900		
1,925	0.00	0.00	0.00	-	0.46	-	63	12.25	12.25	10.50	10.50	10.50	5	21			0.00	0.00	0.00	-	139.00	-	43	0.00	0.00	0.00	-	151.00	-	20			1,925		
1,950	0.00	0.00	0.00	-	0.16	-	78	0.00	0.00	0.00	-	9.20	-	521			0.00	0.00	0.00	-	164.00	-	81	0.00	0.00	0.00	-	172.00	-	21			1,950		
1,975	0.00	0.00	0.00	-	0.05	-	179	0.00	0.00	0.00	-	6.60	-	200			0.00	0.00	0.00	-	189.00	-	590	0.00	0.00	0.00	-	194.00	-	20			1,975		
2,000	0.00	0.00	0.00	-	0.02	-	1,339	5.00	5.00	5.00	5.00	5.00	15	55			0.00	0.00	0.00	-	214.00	-	-	0.00	0.00	0.00	-	217.00	-	-			2,000		
2,050	0.00	0.00	0.00	-	0.01	-	114	0.00	0.00	0.00	-	2.20	-	-			0.00	0.00	0.00	-	264.00	-	1	0.00	0.00	0.00	-	265.00	-	-			2,050		
2,100	0.00	0.00	0.00	-	0.01	-	1,052	0.00	0.00	0.00	-	0.98	-	-			0.00	0.00	0.00	-	314.00	-	20	0.00	0.00	0.00	-	314.00	-	-			2,100		
2,150	0.00	0.00	0.00	-	0.01	-	2	0.00	0.00	0.00	-	0.41	-	-			0.00	0.00	0.00	-	364.00	-	-	0.00	0.00	0.00	-	363.00	-	-			2,150		
2,200	0.00	0.00	0.00	-	0.03	-	-	0.00	0.00	0.00	-	0.16	-	-			0.00	0.00	0.00	-	414.00	-	-	0.00	0.00	0.00	-	413.00	-	-			2,200		
2,250	0.00	0.00	0.00	-	0.01	-	-	0.00	0.00	0.00	-	0.06	-	-			0.00	0.00	0.00	-	464.00	-	-	0.00	0.00	0.00	-	462.00	-	-			2,250		
2,300	0.00	0.00	0.00	-	0.01	-	-	-	-	-	-	-	-	-			0.00	0.00	0.00	-	514.00	-	-	-	-	-	-	-	-	-			2,300		
2,350	0.00	0.00	0.00	-	0.01	-	-	-	-	-	-	-	-	-			0.00	0.00	0.00	-	564.00	-	-	-	-	-	-	-	-	-			2,350		
2,400	0.00	0.00	0.00	-	0.01	-	-	-	-	-	-	-	-	-			0.00	0.00	0.00	-	614.00	-	-	-	-	-	-	-	-	-			2,400		
2,450	0.00	0.00	0.00	-	0.01	-	-	-	-	-	-	-	-	-			0.00	0.00	0.00	-	664.00	-	-	-	-	-	-	-	-	-			2,450		
2,500	0.00	0.00	0.00	-	0.01	-	-	-	-	-	-	-	-	-			0.00	0.00	0.00	-	714.00	-	-	-	-	-	-	-	-	-			2,500		
Totals:						91	3,119							74	1,609	0	0							2	3,490							85	401	0	0
Number of Trades:						4								9		0								2								7		0	

ALPHA BANK (CR)

(Contract Size: 100 Securities, Exercise Style: American, Physical Delivery)

Call Options																Put Options																				
September 2018								October 2018								Other Months		September 2018								October 2018								Other Months		
Exercise Price	Open price	Price max	Price min	Last price	Closing price	Volume	Open Interest	Open price	Price max	Price min	Last price	Closing price	Volume	Open Interest	Volume	Open Interest	Open price	Price max	Price min	Last price	Closing price	Volume	Open Interest	Open price	Price max	Price min	Last price	Closing price	Volume	Open Interest	Volume	Open Interest	Exercise Price			
0.850	0.000	0.000	0.000		0.380	-	-	0.000	0.000	0.000		0.382	-	-			0.000	0.000	0.000		0.001	-	-	0.000	0.000	0.000		0.001	-	-			0.009			
0.900	0.000	0.000	0.000		0.331	-	-	0.000	0.000	0.000		0.333	-	-			0.000	0.000	0.000		0.001	-	-	0.000	0.000	0.000		0.001	-	-			0.009			
0.950	0.000	0.000	0.000		0.281	-	-	0.000	0.000	0.000		0.285	-	-			0.000	0.000	0.000		0.001	-	-	0.000	0.000	0.000		0.003	-	-			0.010			
1.000	0.000	0.000	0.000		0.232	-	-	0.000	0.000	0.000		0.239	-	-			0.000	0.000	0.000		0.002	-	-	0.000	0.000	0.000		0.007	-	-			0.010			
1.100	0.000	0.000	0.000		0.143	-	-	0.000	0.000	0.000		0.156	-	-			0.000	0.000	0.000		0.013	-	-	0.000	0.000	0.000		0.024	-	-			0.011			
1.200	0.000	0.000	0.000		0.074	-	-	0.000	0.000	0.000		0.091	-	50			0.000	0.000	0.000		0.043	-	-	0.000	0.000	0.000		0.059	-	-			0.012			
1.300	0.000	0.000	0.000		0.031	-	-	0.000	0.000	0.000		0.048	-	-			0.000	0.000	0.000		0.101	-	-	0.000	0.000	0.000		0.116	-	-			0.013			
1.400	0.000	0.000	0.000		0.011	-	-	0.055	0.055	0.055	0.055	0.055	70	70			0.000	0.000	0.000		0.180	-	-	0.000	0.000	0.000		0.190	-	-			0.014			
1.500	0.000	0.000	0.000		0.003	-	-	0.000	0.000	0.000		0.010	-	90			0.000	0.000	0.000		0.273	-	-	0.000	0.000	0.000		0.278	-	-			0.015			
1.600	0.000	0.000	0.000		0.001	-	-	0.000	0.000	0.000		0.004	-	-			0.000	0.000	0.000		0.370	-	-	0.000	0.000	0.000		0.372	-	-			0.016			
1.700	0.000	0.000	0.000		0.001	-	-	0.000	0.000	0.000		0.001	-	10			0.000	0.000	0.000		0.470	-	-	0.000	0.000	0.000		0.470	-	-			0.017			
1.800	0.000	0.000	0.000		0.001	-	-	0.000	0.000	0.000		0.002	-	-			0.000	0.000	0.000		0.570	-	-	0.000	0.000	0.000		0.570	-	-			0.018			
1.900	0.000	0.000	0.000		0.001	-	-	0.000	0.000	0.000		0.001	-	-			0.000	0.000	0.000		0.670	-	-	0.000	0.000	0.000		0.670	-	-			0.019			
2.000	0.000	0.000	0.000		0.001	-	-	0.000	0.000	0.000		0.001	-	-			0.000	0.000	0.000		0.770	-	-	0.000	0.000	0.000		0.770	-	-			0.020			
2.200	0.000	0.000	0.000		0.001	-	-	0.000	0.000	0.000		0.001	-	-			0.000	0.000	0.000		0.970	-	-	0.000	0.000	0.000		0.970	-	-			0.022			
2.400	0.000	0.000	0.000		0.001	-	-	0.000	0.000	0.000		0.001	-	-			0.000	0.000	0.000		1.17	-	-	0.000	0.000	0.000		1.17	-	-			0.024			
2.600	0.000	0.000	0.000		0.001	-	-	0.000	0.000	0.000		0.001	-	-			0.000	0.000	0.000		1.37	-	-	0.000	0.000	0.000		1.37	-	-			0.026			
2.800	0.000	0.000	0.000		0.001	-	-	0.000	0.000	0.000		0.001	-	-			0.000	0.000	0.000		1.57	-	-	0.000	0.000	0.000		1.57	-	-			0.028			
3.000	0.000	0.000	0.000		0.001	-	-						-	-			0.000	0.000	0.000		1.77	-	-				-	-			0.030					
3.200	0.000	0.000	0.000		0.001	-	-						-	-			0.000	0.000	0.000		1.97	-	-				-	-			0.032					
Totals:						0	0						70	220	0	30						0	0					0	0		0	0				
Number of Trades:						0							3		0							0.00						0		0		0				

NATIONAL BANK (CR)

(Contract Size: 100 Securities, Exercise Style: American, Physical Delivery)

Call Options																	Put Options																
Exercise Price	September 2018							October 2018							Other Months		September 2018							October 2018							Other Months		Exercise Price
	Open price	Price max	Price min	Last price	Closing price	Volume	Open Interest	Open price	Price max	Price min	Last price	Closing price	Volume	Open Interest	Volume	Open Interest	Open price	Price max	Price min	Last price	Closing price	Volume	Open Interest	Open price	Price max	Price min	Last price	Closing price	Volume	Open Interest	Volume	Open Interest	
0.050						-	-	0.000	0.000	0.000		1.69	-	-								-	-	0.000	0.000	0.000		0.010	-	-			0.001
0.100						-	-	0.000	0.000	0.000		1.64	-	-								-	-	0.000	0.000	0.000		0.030	-	-			0.001
0.150						-	-	0.000	0.000	0.000		1.59	-	-								-	-	0.000	0.000	0.000		0.012	-	-			0.002
0.200						-	-	0.000	0.000	0.000		1.54	-	-								-	-	0.000	0.000	0.000		0.099	-	-			0.002
0.250						-	-	0.000	0.000	0.000		1.49	-	-								-	-	0.000	0.000	0.000		0.320	-	-			0.003
0.300						-	-	0.000	0.000	0.000		1.44	-	-								-	-	0.000	0.000	0.000		0.668	-	-			0.003
0.350						-	-	0.000	0.000	0.000		1.39	-	-								-	-	0.000	0.000	0.000		1.09	-	-			0.004
0.400						-	-	0.000	0.000	0.000		1.34	-	-								-	-	0.000	0.000	0.000		1.56	-	-			0.004
0.450						-	-	0.000	0.000	0.000		1.29	-	-								-	-	0.000	0.000	0.000		2.05	-	-			0.005
0.500	0.000	0.000	0.000		1.24	-	-	0.000	0.000	0.000		1.24	-	-			0.000	0.000	0.000		2.57	-	-	0.000	0.000	0.000		2.55	-	-			0.005
0.500	0.000	0.000	0.000		1.24	-	-	0.000	0.000	0.000		1.24	-	-			0.000	0.000	0.000		2.57	-	-	0.000	0.000	0.000		2.55	-	-			0.005
0.550						-	-	0.000	0.000	0.000		1.19	-	-								-	-	0.000	0.000	0.000		3.05	-	-			0.006
0.600						-	-						-	-								-	-					-	-			0.006	
1.000	0.000	0.000	0.000		0.740	-	-						-	-			0.000	0.000	0.000		0.003	-	-					-	-			0.010	
1.200	0.000	0.000	0.000		0.541	-	-	0.000	0.000	0.000		0.543	-	-			0.000	0.000	0.000		0.001	-	-	0.000	0.000	0.000		0.001	-	-			0.012
1.300	0.000	0.000	0.000		0.441	-	-	0.000	0.000	0.000		0.444	-	-			0.000	0.000	0.000		0.001	-	-	0.000	0.000	0.000		0.001	-	-			0.013
1.400	0.000	0.000	0.000		0.341	-	-	0.000	0.000	0.000		0.348	-	-			0.000	0.000	0.000		0.001	-	-	0.000	0.000	0.000		0.005	-	-			0.014
1.500	0.000	0.000	0.000		0.243	-	-	0.000	0.000	0.000		0.259	-	-			0.000	0.000	0.000		0.002	-	-	0.000	0.000	0.000		0.016	-	-			0.015
1.500	0.000	0.000	0.000		0.243	-	-	0.000	0.000	0.000		0.259	-	-			0.000	0.000	0.000		0.002	-	-	0.000	0.000	0.000		0.016	-	-			0.015
1.600	0.000	0.000	0.000		0.153	-	-	0.000	0.000	0.000		0.181	-	-			0.000	0.000	0.000		0.012	-	-	0.000	0.000	0.000		0.038	-	-			0.016
1.700	0.000	0.000	0.000		0.081	-	-	0.000	0.000	0.000		0.119	-	-			0.000	0.000	0.000		0.040	-	-	0.000	0.000	0.000		0.076	-	-			0.017
1.800	0.000	0.000	0.000		0.035	-	-	0.000	0.000	0.000		0.072	-	-			0.000	0.000	0.000		0.094	-	-	0.000	0.000	0.000		0.129	-	-			0.018
1.900	0.000	0.000	0.000		0.012	-	-	0.000	0.000	0.000		0.041	-	10			0.000	0.000	0.000		0.172	-	-	0.000	0.000	0.000		0.198	-	-			0.019
2.000	0.000	0.000	0.000		0.003	-	-	0.000	0.000	0.000		0.022	-	30			0.000	0.000	0.000		0.263	-	-	0.000	0.000	0.000		0.279	-	-			0.020
2.000	0.000	0.000	0.000		0.003	-	-	0.000	0.000	0.000		0.022	-	30			0.000	0.000	0.000		0.263	-	-	0.000	0.000	0.000		0.279	-	-			0.020
2.200	0.000	0.000	0.000		0.001	-	-	0.000	0.000	0.000		0.005	-	70			0.000	0.000	0.000		0.460	-	-	0.000	0.000	0.000		0.463	-	-			0.022
2.400	0.000	0.000	0.000		0.002	-	-	0.000	0.000	0.000		0.001	-	-			0.000	0.000	0.000		0.660	-	-	0.000	0.000	0.000		0.660	-	-			0.024
2.500	0.000	0.000	0.000		0.001	-	-						-	-			0.000	0.000	0.000		0.760	-	-					-	-			0.025	
2.600	0.000	0.000	0.000		0.001	-	-	0.000	0.000	0.000		0.001	-	-			0.000	0.000	0.000		0.860	-	-	0.000	0.000	0.000		0.860	-	-			0.026
2.800	0.000	0.000	0.000		0.001	-	-	0.000	0.000	0.000		0.002	-	-			0.000	0.000	0.000		1.06	-	-	0.000	0.000	0.000		1.06	-	-			0.028
3.000	0.000	0.000	0.000		0.212	-	-	0.000	0.000	0.000		0.002	-	-			0.000	0.000	0.000		1.26	-	-	0.000	0.000	0.000		1.26	-	-			0.030
3.000	0.000	0.000	0.000		0.212	-	-	0.000	0.000	0.000		0.002	-	-			0.000	0.000	0.000		1.26	-	-	0.000	0.000	0.000		1.26	-	-			0.030
3.200	0.000	0.000	0.000		0.170	-	-	0.000	0.000	0.000		0.082	-	-			0.000	0.000	0.000		1.46	-	-	0.000	0.000	0.000		1.46	-	-			0.032
3.400	0.000	0.000	0.000		0.133	-	-	0.000	0.000	0.000		0.056	-	-			0.000	0.000	0.000		1.66	-	-	0.000	0.000	0.000		1.66	-	-			0.034
3.500	0.000	0.000	0.000		0.119	-	-						-	-			0.000	0.000	0.000		1.76	-	-					-	-			0.035	
4.000	0.000	0.000	0.000		0.067	-	-						-	-			0.000	0.000	0.000		2.26	-	-					-	-			0.040	

NATIONAL BANK (CR)

(Contract Size: 10 Securities, Exercise Style: American, Physical Delivery)

Call Options																	Put Options																						
Exercise Price	September 2018							October 2018							Other Months			September 2018							October 2018							Other Months			Exercise Price				
	Open price	Price max	Price min	Last price	Closing price	Volume	Open Interest	Open price	Price max	Price min	Last price	Closing price	Volume	Open Interest	Volume	Open Interest	Open price	Price max	Price min	Last price	Closing price	Volume	Open Interest	Open price	Price max	Price min	Last price	Closing price	Volume	Open Interest	Volume	Open Interest							
4.500	0.000	0.000	0.000		0.037	-	-						-	-			0.000	0.000	0.000		2.76	-	-				-	-					0.045						
5.000	0.000	0.000	0.000		0.021	-	-						-	-			0.000	0.000	0.000		3.26	-	-				-	-					0.050						
5.500	0.000	0.000	0.000		0.011	-	-						-	-			0.000	0.000	0.000		3.76	-	-				-	-					0.055						
6.000	0.000	0.000	0.000		0.006	-	-						-	-			0.000	0.000	0.000		4.26	-	-				-	-					0.060						
Totals:							0	0								0	110	0	0								0	0								0	0	60	60
Number of Trades:							0									0		0									0.00									0		1	

OPAP (CR)

(Contract Size: 100 Securities, Exercise Style: American, Physical Delivery)

Call Options																	Put Options																			
September 2018								October 2018								Other Months		September 2018								October 2018								Other Months		
Exerise Price	Open price	Price max	Price min	Last price	Closing price	Volume	Open Interest	Open price	Price max	Price min	Last price	Closing price	Volume	Open Interest	Volume	Open Interest	Open price	Price max	Price min	Last price	Closing price	Volume	Open Interest	Open price	Price max	Price min	Last price	Closing price	Volume	Open Interest	Volume	Open Interest	Exerise Price			
6.800	0.000	0.000	0.000		2.20	-	-	0.000	0.000	0.000		2.21	-	-			0.000	0.000	0.000		0.001	-	-	0.000	0.000	0.000		0.001	-	-			0.068			
7.200	0.000	0.000	0.000		1.80	-	-	0.000	0.000	0.000		1.81	-	-			0.000	0.000	0.000		0.001	-	-	0.000	0.000	0.000		0.001	-	-			0.072			
7.600	0.000	0.000	0.000		1.40	-	-	0.000	0.000	0.000		1.42	-	-			0.000	0.000	0.000		0.001	-	-	0.000	0.000	0.000		0.003	-	-			0.076			
8.000	0.000	0.000	0.000		1.00	-	-	0.000	0.000	0.000		1.03	-	-			0.000	0.000	0.000		0.001	-	-	0.000	0.000	0.000		0.018	-	-			0.080			
8.400	0.000	0.000	0.000		0.608	-	-	0.000	0.000	0.000		0.684	-	-			0.000	0.000	0.000		0.004	-	-	0.000	0.000	0.000		0.068	-	-			0.084			
8.800	0.000	0.000	0.000		0.258	-	-	0.000	0.000	0.000		0.400	-	-			0.000	0.000	0.000		0.054	-	-	0.000	0.000	0.000		0.183	-	-			0.088			
9.200	0.000	0.000	0.000		0.058	-	-	0.000	0.000	0.000		0.202	-	-			0.000	0.000	0.000		0.255	-	-	0.000	0.000	0.000		0.386	-	-			0.092			
9.600	0.000	0.000	0.000		0.006	-	-	0.000	0.000	0.000		0.088	-	-			0.000	0.000	0.000		0.603	-	-	0.000	0.000	0.000		0.673	-	-			0.096			
10.000	0.000	0.000	0.000		0.001	-	-	0.000	0.000	0.000		0.033	-	5			0.000	0.000	0.000		1.00	-	-	0.000	0.000	0.000		1.02	-	-			0.100			
11.000	0.000	0.000	0.000		0.001	-	-	0.000	0.000	0.000		0.001	-	-			0.000	0.000	0.000		2.00	-	-	0.000	0.000	0.000		2.00	-	-			0.110			
12.000	0.000	0.000	0.000		0.001	-	-	0.000	0.000	0.000		0.001	-	-			0.000	0.000	0.000		3.00	-	-	0.000	0.000	0.000		3.00	-	-			0.120			
13.000	0.000	0.000	0.000		0.001	-	-	0.000	0.000	0.000		0.001	-	-			0.000	0.000	0.000		4.00	-	-	0.000	0.000	0.000		4.00	-	-			0.130			
14.000	0.000	0.000	0.000		0.001	-	-	0.000	0.000	0.000		0.001	-	-			0.000	0.000	0.000		5.00	-	-	0.000	0.000	0.000		5.00	-	-			0.140			
15.000	0.000	0.000	0.000		0.001	-	-						-	-			0.000	0.000	0.000		6.00	-	-				-	-			0.150					
16.000	0.000	0.000	0.000		0.002	-	-						-	-			0.000	0.000	0.000		7.00	-	-				-	-			0.160					
Totals:						0	0						0	5	0	0						0	0					0	0	0	0					
Number of Trades:						0							0		0							0.00						0		0						

OTE (CR)

(Contract Size: 100 Securities, Exercise Style: American, Physical Delivery)

Call Options																Put Options																				
Exercise Price	September 2018							October 2018							Other Months		September 2018										October 2018							Other Months		Exercise Price
	Open price	Price max	Price min	Last price	Closing price	Volume	Open Interest	Open price	Price max	Price min	Last price	Closing price	Volume	Open Interest	Volume	Open Interest	Open price	Price max	Price min	Last price	Closing price	Volume	Open Interest	Open price	Price max	Price min	Last price	Closing price	Volume	Open Interest	Volume	Open Interest				
8.000	0.000	0.000	0.000		2.83	-	-	0.000	0.000	0.000		2.85	-	-			0.000	0.000	0.000		0.001	-	-	0.000	0.000	0.000		0.001	-	-			0.080			
8.400	0.000	0.000	0.000		2.43	-	-	0.000	0.000	0.000		2.45	-	-			0.000	0.000	0.000		0.001	-	-	0.000	0.000	0.000		0.002	-	-			0.084			
8.800	0.000	0.000	0.000		2.03	-	-	0.000	0.000	0.000		2.05	-	-			0.000	0.000	0.000		0.001	-	-	0.000	0.000	0.000		0.001	-	-			0.088			
9.200	0.000	0.000	0.000		1.63	-	-	0.000	0.000	0.000		1.65	-	-			0.000	0.000	0.000		0.002	-	-	0.000	0.000	0.000		0.005	-	-			0.092			
9.600	0.000	0.000	0.000		1.23	-	-	0.000	0.000	0.000		1.27	-	-			0.000	0.000	0.000		0.002	-	-	0.000	0.000	0.000		0.021	-	-			0.096			
10.000	0.000	0.000	0.000		0.840	-	-	0.000	0.000	0.000		0.914	-	-			0.000	0.000	0.000		0.006	-	-	0.000	0.000	0.000		0.064	-	-			0.100			
11.000	0.000	0.000	0.000		0.120	-	-	0.000	0.000	0.000		0.275	-	-			0.000	0.000	0.000		0.285	-	-	0.000	0.000	0.000		0.425	-	-			0.110			
12.000	0.000	0.000	0.000		0.002	-	-	0.000	0.000	0.000		0.043	-	-			0.000	0.000	0.000		1.17	-	-	0.000	0.000	0.000		1.20	-	-			0.120			
13.000	0.000	0.000	0.000		0.001	-	15	0.000	0.000	0.000		0.003	-	5			0.000	0.000	0.000		2.17	-	-	0.000	0.000	0.000		2.17	-	-			0.130			
14.000	0.000	0.000	0.000		0.001	-	-	0.000	0.000	0.000		0.001	-	-			0.000	0.000	0.000		3.17	-	-	0.000	0.000	0.000		3.17	-	-			0.140			
15.000	0.000	0.000	0.000		0.001	-	-	0.000	0.000	0.000		0.001	-	-			0.000	0.000	0.000		4.17	-	-	0.000	0.000	0.000		4.17	-	-			0.150			
16.000	0.000	0.000	0.000		0.001	-	-	0.000	0.000	0.000		0.001	-	-			0.000	0.000	0.000		5.17	-	-	0.000	0.000	0.000		5.17	-	-			0.160			
17.000	0.000	0.000	0.000		0.001	-	-						-	-			0.000	0.000	0.000		6.17	-	-					-	-			0.170				
18.000	0.000	0.000	0.000		0.001	-	-						-	-			0.000	0.000	0.000		7.17	-	-					-	-			0.180				
Totals:							0	15								0	0	0										0	0	0		0				
Number of Trades:							0								0	0.00										0	0		0							

PIRAEUS BANK (CR)

(Contract Size: 100 Securities, Exercise Style: American, Physical Delivery)

Call Options																Put Options																				
September 2018								October 2018								Other Months		September 2018								October 2018								Other Months		
Exercise Price	Open price	Price max	Price min	Last price	Closing price	Volume	Open Interest	Open price	Price max	Price min	Last price	Closing price	Volume	Open Interest	Volume	Open Interest	Open price	Price max	Price min	Last price	Closing price	Volume	Open Interest	Open price	Price max	Price min	Last price	Closing price	Volume	Open Interest	Volume	Open Interest	Exercise Price			
1.400	0.000	0.000	0.000		0.481	-	-	0.000	0.000	0.000		0.485	-	-			0.000	0.000	0.000		0.001	-	-	0.000	0.000	0.000		0.002	-	-			0.014			
1.500	0.000	0.000	0.000		0.381	-	-	0.000	0.000	0.000		0.390	-	-			0.000	0.000	0.000		0.001	-	-	0.000	0.000	0.000		0.007	-	-			0.015			
1.600	0.000	0.000	0.000		0.283	-	-	0.000	0.000	0.000		0.301	-	-			0.000	0.000	0.000		0.002	-	-	0.000	0.000	0.000		0.018	-	-			0.016			
1.700	0.000	0.000	0.000		0.190	-	-	0.000	0.000	0.000		0.223	-	-			0.000	0.000	0.000		0.009	-	-	0.000	0.000	0.000		0.039	-	-			0.017			
1.800	0.000	0.000	0.000		0.112	-	-	0.000	0.000	0.000		0.156	-	-			0.000	0.000	0.000		0.032	-	-	0.000	0.000	0.000		0.072	-	-			0.018			
1.900	0.000	0.000	0.000		0.057	-	-	0.000	0.000	0.000		0.105	-	-			0.000	0.000	0.000		0.076	-	-	0.000	0.000	0.000		0.121	-	-			0.019			
2.000	0.000	0.000	0.000		0.024	-	-	0.000	0.000	0.000		0.067	-	-			0.000	0.000	0.000		0.143	-	-	0.000	0.000	0.000		0.184	-	-			0.020			
2.200	0.000	0.000	0.000		0.003	-	-	0.000	0.000	0.000		0.024	-	120			0.000	0.000	0.000		0.322	-	-	0.000	0.000	0.000		0.340	-	-			0.022			
2.400	0.000	0.000	0.000		0.001	-	-	0.000	0.000	0.000		0.007	-	-			0.000	0.000	0.000		0.520	-	-	0.000	0.000	0.000		0.524	-	-			0.024			
2.600	0.000	0.000	0.000		0.004	-	-	0.000	0.000	0.000		0.002	-	-			0.000	0.000	0.000		0.720	-	-	0.000	0.000	0.000		0.720	-	-			0.026			
2.800	0.000	0.000	0.000		0.001	-	-	0.000	0.000	0.000		0.002	-	-			0.000	0.000	0.000		0.920	-	-	0.000	0.000	0.000		0.920	-	-			0.028			
3.000	0.000	0.000	0.000		0.002	-	-	0.000	0.000	0.000		0.001	-	-			0.000	0.000	0.000		1.12	-	-	0.000	0.000	0.000		1.12	-	-			0.030			
3.200	0.000	0.000	0.000		0.001	-	-	0.000	0.000	0.000		0.002	-	-			0.000	0.000	0.000		1.32	-	-	0.000	0.000	0.000		1.32	-	-			0.032			
3.400	0.000	0.000	0.000		0.003	-	-	0.000	0.000	0.000		0.001	-	-			0.000	0.000	0.000		1.52	-	-	0.000	0.000	0.000		1.52	-	-			0.034			
3.600	0.000	0.000	0.000		0.001	-	-	0.000	0.000	0.000		0.001	-	-			0.000	0.000	0.000		1.72	-	-	0.000	0.000	0.000		1.72	-	-			0.036			
3.800	0.000	0.000	0.000		0.001	-	-	0.000	0.000	0.000		0.001	-	-			0.000	0.000	0.000		1.92	-	-	0.000	0.000	0.000		1.92	-	-			0.038			
4.000	0.000	0.000	0.000		0.001	-	-						-	-			0.000	0.000	0.000		2.12	-	-				-	-			0.040					
4.400	0.000	0.000	0.000		0.001	-	-						-	-			0.000	0.000	0.000		2.52	-	-				-	-			0.044					
4.800	0.000	0.000	0.000		0.001	-	-						-	-			0.000	0.000	0.000		2.92	-	-				-	-			0.048					
5.200	0.000	0.000	0.000		0.001	-	-						-	-			0.000	0.000	0.000		3.32	-	-				-	-			0.052					
5.600	0.000	0.000	0.000		0.001	-	-						-	-			0.000	0.000	0.000		3.72	-	-				-	-			0.056					
Totals:						0	0						0	120	0	0						0	0					0	0	0	0					
Number of Trades:						0							0		0							0.00						0		0						

PPC (CR)

(Contract Size: 100 Securities, Exercise Style: American, Physical Delivery)

Call Options																	Put Options																
Exercise Price	September 2018							October 2018							Other Months		September 2018							October 2018							Other Months		Exercise Price
	Open price	Price max	Price min	Last price	Closing price	Volume	Open Interest	Open price	Price max	Price min	Last price	Closing price	Volume	Open Interest	Volume	Open Interest	Open price	Price max	Price min	Last price	Closing price	Volume	Open Interest	Open price	Price max	Price min	Last price	Closing price	Volume	Open Interest	Volume	Open Interest	
0.950	0.000	0.000	0.000		0.490	-	-	0.000	0.000	0.000		0.492	-	-			0.000	0.000	0.000		0.001	-	-	0.000	0.000	0.000		0.001	-	-			0.010
1.000	0.000	0.000	0.000		0.441	-	-	0.000	0.000	0.000		0.442	-	-			0.000	0.000	0.000		0.001	-	-	0.000	0.000	0.000		0.001	-	-			0.010
1.100	0.000	0.000	0.000		0.342	-	-	0.000	0.000	0.000		0.345	-	-			0.000	0.000	0.000		0.001	-	-	0.000	0.000	0.000		0.003	-	-			0.011
1.200	0.000	0.000	0.000		0.246	-	-	0.000	0.000	0.000		0.253	-	-			0.000	0.000	0.000		0.006	-	-	0.000	0.000	0.000		0.010	-	-			0.012
1.300	0.000	0.000	0.000		0.162	-	-	0.000	0.000	0.000		0.172	-	-			0.000	0.000	0.000		0.021	-	-	0.000	0.000	0.000		0.029	-	-			0.013
1.400	0.000	0.000	0.000		0.095	-	-	0.000	0.000	0.000		0.108	-	-			0.000	0.000	0.000		0.055	-	-	0.000	0.000	0.000		0.065	-	-			0.014
1.500	0.000	0.000	0.000		0.050	-	-	0.075	0.075	0.075	0.075	0.075	10	10			0.000	0.000	0.000		0.109	-	-	0.000	0.000	0.000		0.119	-	-			0.015
1.600	0.000	0.000	0.000		0.023	-	10	0.000	0.000	0.000		0.033	-	10			0.000	0.000	0.000		0.182	-	-	0.000	0.000	0.000		0.190	-	-			0.016
1.700	0.000	0.000	0.000		0.010	-	-	0.000	0.000	0.000		0.016	-	50			0.000	0.000	0.000		0.269	-	-	0.000	0.000	0.000		0.273	-	-			0.017
1.800	0.000	0.000	0.000		0.003	-	-	0.000	0.000	0.000		0.007	-	-			0.000	0.000	0.000		0.363	-	-	0.000	0.000	0.000		0.365	-	-			0.018
1.900	0.000	0.000	0.000		0.001	-	50	0.000	0.000	0.000		0.003	-	-			0.000	0.000	0.000		0.461	-	-	0.000	0.000	0.000		0.461	-	-			0.019
2.000	0.000	0.000	0.000		0.001	-	45	0.000	0.000	0.000		0.001	-	-			0.000	0.000	0.000		0.560	-	-	0.000	0.000	0.000		0.560	-	-			0.020
2.200	0.000	0.000	0.000		0.001	-	-	0.000	0.000	0.000		0.001	-	-			0.000	0.000	0.000		0.760	-	-	0.000	0.000	0.000		0.760	-	-			0.022
2.400	0.000	0.000	0.000		0.002	-	-	0.000	0.000	0.000		0.001	-	-			0.000	0.000	0.000		0.960	-	-	0.000	0.000	0.000		0.960	-	-			0.024
2.600	0.000	0.000	0.000		0.001	-	-	0.000	0.000	0.000		0.001	-	-			0.000	0.000	0.000		1.16	-	-	0.000	0.000	0.000		1.16	-	-			0.026
2.800	0.000	0.000	0.000		0.001	-	-	0.000	0.000	0.000		0.001	-	-			0.000	0.000	0.000		1.36	-	-	0.000	0.000	0.000		1.36	-	-			0.028
3.000	0.000	0.000	0.000		0.001	-	-						-	-			0.000	0.000	0.000		1.56	-	-				-	-			0.030		
3.200	0.000	0.000	0.000		0.001	-	-						-	-			0.000	0.000	0.000		1.76	-	-				-	-			0.032		
3.400	0.000	0.000	0.000		0.001	-	-						-	-			0.000	0.000	0.000		1.96	-	-				-	-			0.034		
3.600	0.000	0.000	0.000		0.001	-	-						-	-			0.000	0.000	0.000		2.16	-	-				-	-			0.036		
3.800	0.000	0.000	0.000		0.001	-	-						-	-			0.000	0.000	0.000		2.36	-	-				-	-			0.038		
4.000	0.000	0.000	0.000		0.001	-	-						-	-			0.000	0.000	0.000		2.56	-	-				-	-			0.040		
4.400	0.000	0.000	0.000		0.003	-	-						-	-			0.000	0.000	0.000		2.96	-	-				-	-			0.044		
Totals:							0	105					10	70	30	30					0	0					0	0		0	0		
Number of Trades:							0						1		1						0.00						0		0				

Lending Products	Underlying Title	Multilateral Transactions[1]					Bilateral Transactions[2]		Stock Borrowing through OTC (volume)[3]
		Open Interest[5]	Volume(Offered)	Average Weighted	Transactions volume	Average Weighted	Transactions Volume	Average Weighted	Transactions Volume
ADMIEBOR	ADMIE (IPTO) HOLDING S.A. (CR)	---	20,746	5.31%	---	---	---	---	1,828
AEGNBOR	AEGEAN AIRLINES (CR)	1,500	11,814	5.31%	---	---	---	---	11,912
ALPHABOR	ALPHA BANK (CR)	30,001	3,874	5.31%	---	---	---	---	19,624,560
ALMYBOR	ALUMIL (CR)	---	---	---	---	---	---	---	---
TATTBOR	ATTICA BANK S.A. (CR)	8,819	1,221	5.31%	---	---	---	---	370
EEEBOR	CC HBC AG (CR)	2,129	4,926	5.31%	---	---	---	---	70,546
CENERBOR	CENERGY HOLDINGS (CB)	---	48,498	5.31%	---	---	---	---	---
ELLAKTORBOR	ELLAKTOR (CR)	---	84,836	5.31%	---	---	---	---	---
EUROBBOR	EUROBANK ERGASIAS (CR)	3,000	29,839	5.31%	---	---	---	---	22,156,813
EYDAPBOR	EYDAP S.A. (CR)	---	2,480	5.31%	---	---	---	---	82,799
FFGRPBOR	FOLLI FOLLIE (CR)	---	---	---	---	---	---	---	1,369,636
FOYRKBOR	FOURLIS (CR)	8,990	88	3.58%	---	---	---	---	4,650
GEKTERNABOR	GEK TERNA (CR)	6,000	29,351	5.31%	6,000	3.93%	---	---	1,293
SARBOR	GR. SARANTIS S.A. (CR)	452	7	5.36%	---	---	---	---	3,351
EUPROBOR	GRIVALIA PROPERTIES (CR)	---	98,475	5.31%	---	---	---	---	68,235
EXAEBOR	HELLENIC EXCHANGES-A.S.E. (CR)	4,300	479,834	3.31%	---	---	---	---	125,065
ELPEBOR	HELLENIC PETROLEUM (CR)	23,541	122,596	3.31%	1,241	2.65%	---	---	53,719
INTRKBOR	INTRACOM HOLDINGS (CR)	---	---	---	---	---	---	---	---
INLOTBOR	INTRALOT (CR)	---	71,499	5.31%	---	---	---	---	184,512
BELABOR	JUMBO SA (CR)	---	156,971	5.31%	---	---	---	---	69,713
LAMDABOR	LAMDA DEVELOPMENT SA (CR)	---	111	5.31%	---	---	---	---	1,500
MIGBOR	MARFIN INVESTMENT GROUP (CR)	1,000	396,964	5.31%	---	---	---	---	744,474
MOHBOR	MOTOR OIL (CR)	37,456	101	5.33%	---	---	---	---	613,781
MYTILBOR	MYTILINEOS HOLDINGS (CR)	33,500	135,092	3.31%	5,000	2.65%	---	---	3,086
ETEBOR	NATIONAL BANK (CR)	---	45,958	5.31%	---	---	---	---	8,182,043
OPAPBOR	OPAP (CR)	1,424	98,933	5.31%	1,424	2.93%	---	---	947,354
HTOBOR	OTE (CR)	11,663	38,054	4.68%	---	---	---	---	737,656
PPABOR	P.P.A. S.A. (CR)	---	2,200	5.31%	---	---	---	---	2,901
TPEIRBOR	PIRAEUS BANK (CR)	2,000	1,392	5.31%	---	---	---	---	22,737,654
PLAISBOR	PLAISIO COMPUTERS SA (CR)	---	---	---	---	---	---	---	---
PPCBOR	PPC (CR)	---	122,058	5.31%	---	---	---	---	6,136,580

Stock Lending Notes

- [1] - Multilateral contracts Lending or Borrowing as per Methods 8-1, 8-2 and 8-3-3 (According to ATHEX BoD Resolution No.17)
- [2] - Billateral Contracts Lending or Borrowing as per Methods 8-3-1 and 8-3-2 (According to ATHEX BoD Resolution No.20)
- [3] - The information concerning OTC Stock Borrowing Transactions is based on the statements of the Dematerialised Securities System (DSS) operators involved and refers to volumes that have been registered up until the previous working day.
- [4] - Average Price (Volume weighted)
- [5] - The Data concerning Open Interest before the start of trading session

Lending Products	Underlying Title	Multilateral Transactions[1]					Bilateral Transactions[2]		Stock Borrowing through OTC (volume)[3]
		Open Interest[5]	Volume(Offered)	Average Weighted	Transactions volume	Average Weighted	Transactions Volume	Average Weighted	Transactions Volume
QUALBOR	QUALITY & RELIABILITY SA (CR)	---	---	---	---	---	---	---	---
TENERGYBOR	TERNA ENERGY (CR)	24,121	34,311	4.24%	20,935	3.65%	22,000	10.00%	---
TITKBOR	TITAN CEMENT (CR)	9,200	199,004	3.31%	600	2.65%	---	---	47,117
VIOBOR	VIOHALCO SA/NV (CB)	---	69,479	5.31%	---	---	---	---	---

Stock Lending Notes

- [1] - Multilateral contracts Lending or Borrowing as per Methods 8-1, 8-2 and 8-3-3 (According to ATHEX BoD Resolution No.17)
- [2] - Billateral Contracts Lending or Borrowing as per Methods 8-3-1 and 8-3-2 (According to ATHEX BoD Resolution No.20)
- [3] - The information concerning OTC Stock Borrowing Transactions is based on the statements of the Dematerialised Securities System (DSS) operators involved and refers to volumes that have been registered up until the previous working day.
- [4] - Average Price (Volume weighted)
- [5] - The Data concerning Open Interest before the start of trading session

Sectors codification for listed companies

533	-	Exploration & Production	537	-	Integrated Oil & Gas
1353	-	Commodity Chemicals	1357	-	Specialty Chemicals
1753	-	Aluminum	1755	-	Nonferrous Metals
1757	-	Steel	1775	-	General Mining
2353	-	Building Materials & Fixtures	2357	-	Heavy Construction
2723	-	Containers & Packaging	2727	-	Diversified Industrials
2733	-	Electrical Components & Equipment	2753	-	Commercial Vehicles & Trucks
2757	-	Industrial Machinery	2773	-	Marine Transportation
2777	-	Transportation Services	2791	-	Business Support Services
2797	-	Industrial Suppliers	3535	-	Distillers & Vintners
3537	-	Soft Drinks	3573	-	Farming Fishing & Plantations
3577	-	Food Products	3722	-	Durable Household Products
3726	-	Furnishings	3728	-	Home Construction
3747	-	Toys	3763	-	Clothing & Accessories
3765	-	Footwear	3767	-	Personal Products
3785	-	Tobacco	4533	-	Health Care Providers
4535	-	Medical Equipment	4577	-	Pharmaceuticals
5337	-	Food Retailers & Wholesalers	5371	-	Apparel Retailers
5373	-	Broadline Retailers	5375	-	Home Improvement Retailers
5379	-	Specialty Retailers	5553	-	Broadcasting & Entertainment
5555	-	Media Agencies	5557	-	Publishing
5751	-	Airlines	5752	-	Gambling
5753	-	Hotels	5755	-	Recreational Services
5757	-	Restaurants & Bars	5759	-	Travel & Tourism
6535	-	Fixed Line Telecommunications	6575	-	Mobile Telecommunications
7535	-	Conventional Electricity	7537	-	Alternative Electricity
7577	-	Water	8355	-	Banks
8534	-	Insurance Brokers	8536	-	Property & Casualty Insurance
8633	-	Real Estate Holding & Development	8637	-	Real Estate Services
8671	-	Industrial & Office REITs	8674	-	Diversified REITs
8675	-	Specialty REITs	8775	-	Specialty Finance
8777	-	Investment Services	8985	-	Equity Investment Instruments
9533	-	Computer Services	9535	-	Internet
9537	-	Software	9572	-	Computer Hardware
9574	-	Electronic Office Equipment	9578	-	Telecommunications Equipment
12003	-	ETF			



ATHEX
Athens Stock Exchange

Λεωφ. Αθηνών 110 104 42 Αθήνα
110, Athinon Ave. GR 104 42 Athens
tel. (+30)210-33.66.800, fax (+30)210-33.66.101
www.athexgroup.gr