

18

**Ημερήσιο Δελτίο
Συναλλακτικής Δραστηριότητας**

Daily Official List
of Trading Activity

Wednesday, 21 November, 2018

Year: 139 Trading Day No: 224



ATHEX
Athens Stock Exchange

Disclaimer:

Hellenic Exchanges-Athens Stock Exchange S.A. endeavours to ensure that the data and other material ("Information") presented on the Daily Official List are accurate and complete, but it is not liable for any errors or omissions of data or /and for the accuracy, credibility, updating and completeness of the aforesaid information nor it has any liability arising directly or indirectly from the use of the above Information.

The Company is not liable for the accuracy of the data included in listed companies' announcements. Only the sender of such an announcement is fully and solely liable for any infringement of third party's rights from the content of such announcement. All contents of the Daily Official List are provided only for information purposes and do not constitute investment advice or solicitation to invest in securities or other products listed for trading on the Exchange.

You acknowledge and agree that the Company is the owner of any property rights related to any Information appearing on the Daily Official List including intellectual property rights copyright, trademarks, etc.

The above data are a property of the Hellenic Exchanges-Athens Exchange and are copyright protected. Users are forbidden to reproduce, modify, copy, sale, transmit or redistribute, by all reproduction means and methods, part or the whole of the above data, without reference to their source.

The commercial exploitation of these data is, also, forbidden by third parties. Hellenic Exchanges-Athens Exchange does not carry any responsibility, direct or indirect, derived from usage or accidental alteration of the above data when used by third parties.

Hellenic Exchanges – Athens Stock Exchange S.A.

110 Athinon Ave., 10442 Athens, Tel: (210) 33.66.800, Fax: (210) 32.13.938

www.athexgroup.gr

Thessalonica Stock Exchange Center (T.S.E.C)

16-18 Katouni Str., Thessalonica 546 25 Tel: (2310) 567.667, Fax: (2310) 530.545

Athex Members Guarantee Fund

14-16 Fidiou Str., Athens 106 78, Tel: (210) 33.04.682, Fax: (210) 33.04.155

Hellenic Republic Capital Market Commission

1 Kolokotroni Str. & 1 Stadiou Str., Athens 10562 Tel: (210) 33.77.100 Fax: (210) 33.77.173

Table of Contents

Section 1: Statistical Figures of Securities, Derivatives and Lending

Summary of Markets

Athex Indices

Analytic Figures for Athex Market's Boards and Categories

Trading Details by Athex Sectors and Financial Instruments (ETFs)

Top 10 best & worst performing Shares

Derivatives Summary

Section 2: Analytic Figures of Shares Transactions

Analytic Figures of Shares Transactions

Shares' Notes

Section 3: Figures of Securities Transactions

Securities Blocks Details

Shares Rights Details

Stock Borrowing

Securities Forced Sales

Forced Sales Registered Shares

Exchange Traded Funds (ETFs) Characteristics

Section 5: Bonds traded in Fixed Income Assets Market

Convertible Corporate Bonds - Regulated Market

Non Convertible Corporate Bonds - Regulated Market

Government Bonds

Treasury Bills & Zero Coupon Government Bonds

Government Bonds Traded with the Open Outcry Method

State Banks Bonds

Section 6: Additional Infos

Athex & ATHEXClear Members List

List of Stocks under Market Making operations

Section 7: Derivatives Market Analytic Figures

Index Futures

Stock Futures

Index Options

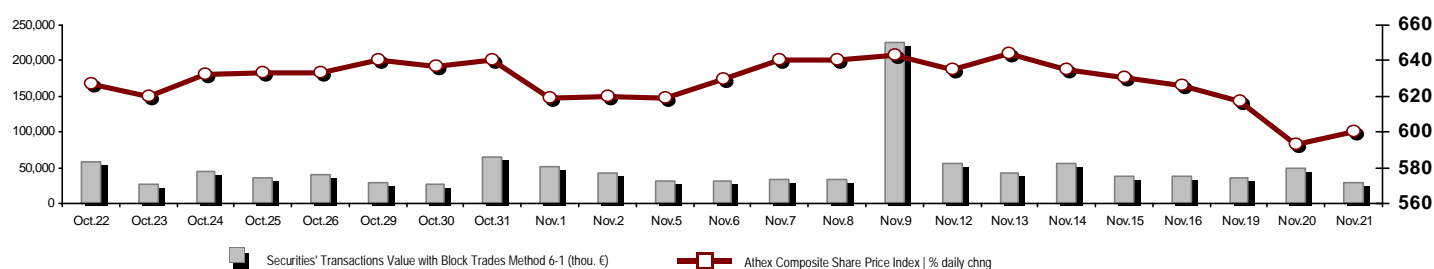
Stock Options

Stock Lending Analytic Figures

Appendix A: Sectors codification for listed companies

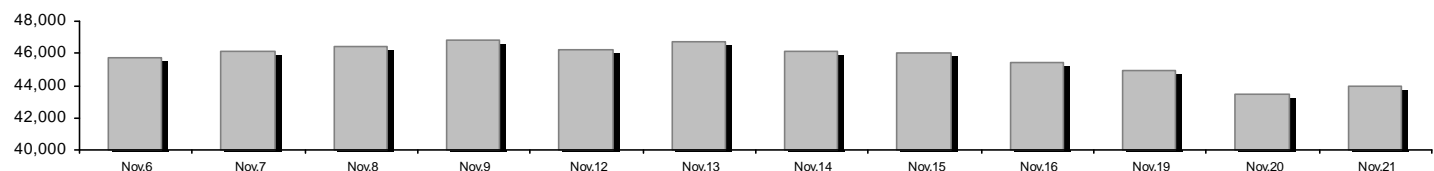
Summary of Markets

Athex Composite Share Price Index vs Shares and Derivatives Transactions Value

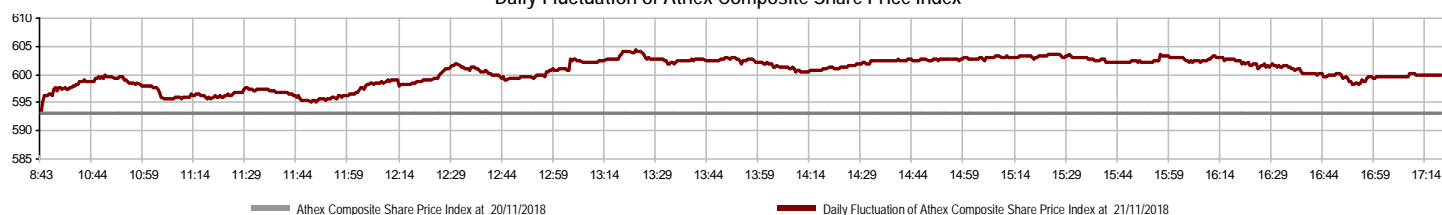


Athex Capitalisation (mill. €) **:	43,949.68		Derivatives Total Open Interest	478,489
Daily change: mill. € %	483.61	1.11%	in Index Futures % daily chng	4,062 -3.99%
Yearly Avg Capitalisation: mill. € % chng prev year Avg	52,846.16	5.37%	in Stock Futures % daily chng	471,901 -1.29%
Athex Composite Share Price Index % daily chng	599.95	1.16%	in Index Options % daily chng	1,436 9.70%
Athex Composite Share Price Index Capitalisation (mill. €)	39,174.64		in Stock Options % daily chng	1,090 0.00%
Daily change (mill. €)	459.08			
Securities' Transactions Value with Block Trades Method 6-1 (29,644.58		Derivatives Contracts Volume:	25,259
Daily change: %	-19,534.52	-39.72%	Daily change: pieces %	-9,573 -27.48%
YtD Avg Trans. Value: thou. € % chng prev year Avg	55,398.80	-4.78%	YtD Avg Derivatives Contracts % chng prev year Avg	54,539 -29.61%
Blocks Transactions Value of Method 6-1 (thou. €)	4,211.05		Derivatives Trades Number:	1,886
Blocks Transactions Value of Method 6-2 & 6-3 (thou. €)	0.08		Daily change: number %	-998 -34.60%
Bonds Transactions Value (thou.€)	359.60		YtD Avg Trades number % chng prev year Avg	2,724 3.78%
Securities' Transactions Volume with Block Trades Method 6-1 (th	18,321.69		Lending Total Open Interest	318,898
Daily change: thou. pieces %	-9,433.39	-33.99%	Daily change: pieces %	-2,523 -0.78%
YtD Avg Volume: % chng prev year Avg	37,245.06	-48.34%	Lending Volume (Multilateral/Bilateral)	5,716
Blocks Transactions Volume of Method 6-1 (thou. Pieces)	4,567.80		Daily change: pieces %	4,006
Blocks Transactions Volume of Method 6-2 & 6-3 (thou. Pieces)	0.01		Multilateral Lending	5,716
Bonds Transactions Volume	354,000		Bilateral Lending	0
Securities' Trades Number with Block Trades Method 6-1	15,509		Lending Trades Number:	3
Daily change: number %	-10,345	-40.01%	Daily change: %	0
YtD Avg Trades number % chng prev year Avg	20,302	16.22%	Multilateral Lending Trades Number	3
Number of Blocks Method 6-1	6		Bilateral Lending Trades Number	0
Number of Blocks Method 6-2 & 6-3	1			
Number of Bonds Transactions	27			

Athex Capitalisation (mill. €) **



Daily Fluctuation of Athex Composite Share Price Index



Athex Indices

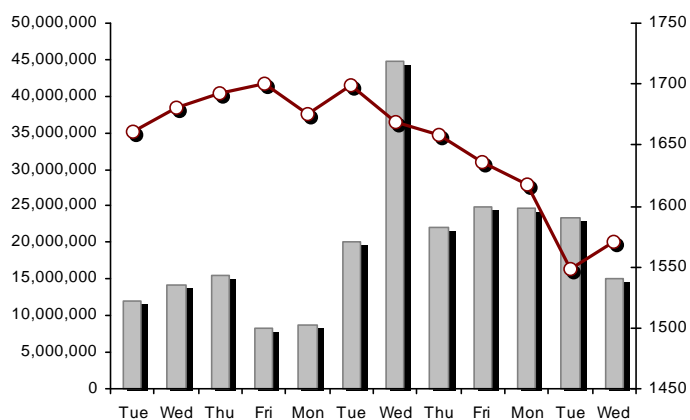
Index name	21/11/2018	20/11/2018	pts.	%	Min	Max	Year min	Year max	Year change
Athex Composite Share Price Index	599.95 #	593.05	6.90	1.16%	593.05	604.26	592.70	895.64	-25.23% €
FTSE/Athex Large Cap	1,571.00 #	1,548.58	22.42	1.45%	1,548.58	1,580.52	1,548.58	2,275.91	-24.59% €
FTSE/Athex Mid Cap Index	960.96 €	967.51	-6.55	-0.68%	959.87	971.45	959.72	1,417.74	-19.80% €
FTSE/ATHEX-CSE Banking Index	314.80 #	309.62	5.18	1.67%	309.62	319.42	307.86	788.88	-52.53% €
FTSE/ATHEX Global Traders Index Plus	1,959.84 #	1,955.21	4.63	0.24%	1,955.21	1,979.89	1,951.41	2,656.94	-16.23% €
FTSE/ATHEX Global Traders Index	1,911.36 #	1,888.16	23.20	1.23%	1,888.16	1,926.37	1,872.97	2,452.53	-12.25% €
FTSE/ATHEX Mid & Small Cap Factor-Weighted Ind	2,221.36 #	2,208.29	13.07	0.59%	2,200.43	2,228.71	1,953.64	2,464.88	13.69% #
ATHEX Mid & SmallCap Price Index	3,651.98 #	3,603.95	48.03	1.33%	3,584.69	3,684.25	3,459.89	4,442.84	5.48% #
FTSE/Athex Market Index	389.84 #	384.60	5.24	1.36%	384.60	392.18	384.60	564.78	-24.29% €
FTSE Med Index	4,301.33 €	4,408.67	-107.34	-2.43%			3,923.92	4,634.00	-0.78% €
Athex Composite Index Total Return Index	949.30 #	938.37	10.93	1.16%	938.37	956.11	937.82	1,392.60	-23.90% €
FTSE/Athex Large Cap Total Return	2,279.41 #	2,246.89	32.52	1.45%			2,246.89	3,277.20	-24.49% €
FTSE/ATHEX Large Cap Net Total Return	687.05 #	677.24	9.81	1.45%	677.24	691.21	677.24	979.13	-23.34% €
FTSE/Athex Mid Cap Total Return	1,186.05 €	1,194.13	-8.08	-0.68%			1,186.05	1,702.90	-17.78% €
FTSE/ATHEX-CSE Banking Total Return Index	296.56 #	291.68	4.88	1.67%			291.68	747.83	-53.33% €
Hellenic Mid & Small Cap Index	887.17 #	885.56	1.61	0.18%	885.56	896.18	881.54	1,185.73	-14.04% €
FTSE/Athex Banks	415.93 #	409.08	6.85	1.67%	409.08	422.03	406.75	1,042.30	-52.53% €
FTSE/Athex Financial Services	769.44 €	775.11	-5.67	-0.73%	768.65	782.46	766.55	1,309.27	-31.63% €
FTSE/Athex Industrial Goods & Services	1,856.16 #	1,851.31	4.85	0.26%	1,848.98	1,897.78	1,848.98	2,717.62	-17.36% €
FTSE/Athex Retail	63.86 #	57.78	6.08	10.52%	56.97	63.86	51.91	2,921.52	-97.70% €
FTSE/ATHEX Real Estate	2,734.25 €	2,759.67	-25.42	-0.92%	2,734.25	2,794.03	2,734.25	3,587.02	-19.79% €
FTSE/Athex Personal & Household Goods	6,747.69 #	6,623.70	123.99	1.87%	6,615.03	6,863.85	6,088.80	8,843.95	-15.66% €
FTSE/Athex Food & Beverage	9,547.52 #	9,441.58	105.94	1.12%	9,349.39	9,587.24	9,316.14	11,879.29	-5.97% €
FTSE/Athex Basic Resources	3,068.87 #	3,053.15	15.72	0.51%	2,982.84	3,068.87	2,966.54	4,731.18	-23.90% €
FTSE/Athex Construction & Materials	2,522.36 €	2,538.06	-15.70	-0.62%	2,506.99	2,556.13	2,487.37	3,244.17	-10.50% €
FTSE/Athex Oil & Gas	4,655.23 #	4,596.68	58.55	1.27%	4,596.68	4,726.17	4,087.64	5,396.31	2.77% #
FTSE/Athex Chemicals	8,304.32 #	8,057.40	246.92	3.06%	8,057.40	8,366.23	7,915.01	12,117.06	-27.61% €
FTSE/Athex Media	1,560.68 €	1,573.69	-13.01	-0.83%	1,417.62	1,586.69	1,131.49	1,664.73	0.00% -
FTSE/Athex Travel & Leisure	1,366.71 #	1,325.32	41.39	3.12%	1,325.32	1,378.62	1,325.32	1,962.01	-25.31% €
FTSE/Athex Technology	723.94 #	721.14	2.80	0.39%	714.70	726.52	714.70	1,116.72	-20.51% €
FTSE/Athex Telecommunications	2,780.10 #	2,700.27	79.83	2.96%	2,700.27	2,788.35	2,587.42	3,526.04	-12.17% €
FTSE/Athex Utilities	1,784.59 €	1,791.68	-7.09	-0.40%	1,778.51	1,812.82	1,757.74	2,508.45	-10.43% €
FTSE/Athex Health Care	444.37 #	423.85	20.52	4.84%	423.85	448.80	256.65	454.42	72.22% #
Athex All Share Index	154.59 #	152.89	1.70	1.11%	154.59	154.59	152.89	209.09	-18.75% €
Hellenic Corporate Bond Index	117.05 €	117.40	-0.34	-0.29%			116.16	118.41	0.09% #
Hellenic Corporate Bond Price Index	96.79 €	97.08	-0.30	-0.30%			96.79	100.55	-3.16% €

Note 1: FTSE/Med 100, Hellenic Corporate Bond Price Index and Hellenic Corporate Bond Index closing prices refer to the previous trading day of 19/11/2018.

Note 2: The Hellenic Mid & Small Cap Index is a Customized index calculated by the Athens Exchange.

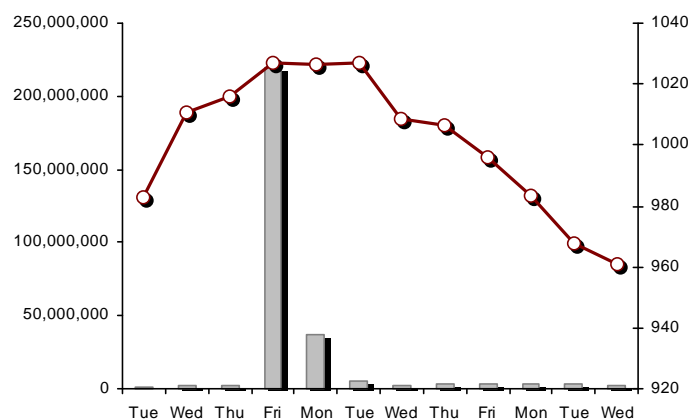
Athex Indices

FTSE/Large Cap



21/11/2018: 1.45% FTSE/Athex Mid Cap Index

21/11/2018: -0.68%

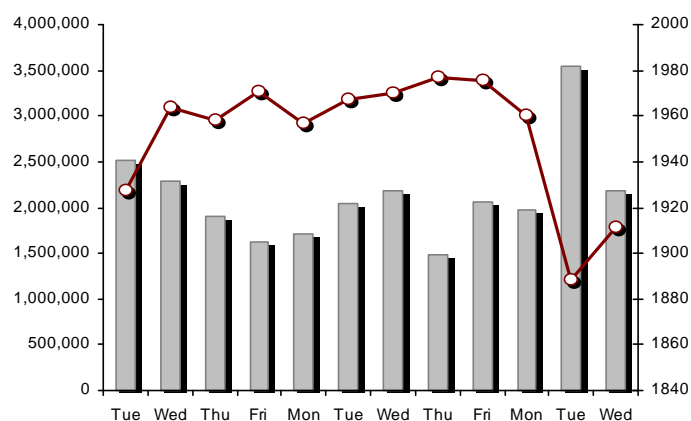
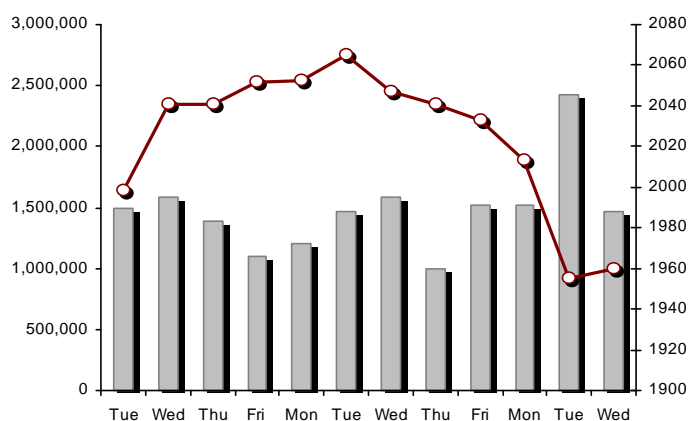


FTSE/ATHEX Global Traders Index Plus

21/11/2018: 0.24%

FTSE/ATHEX Global Traders Index

21/11/2018: 1.23%

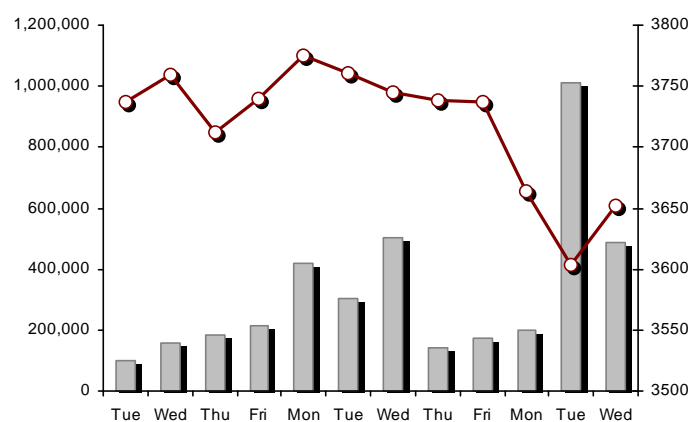
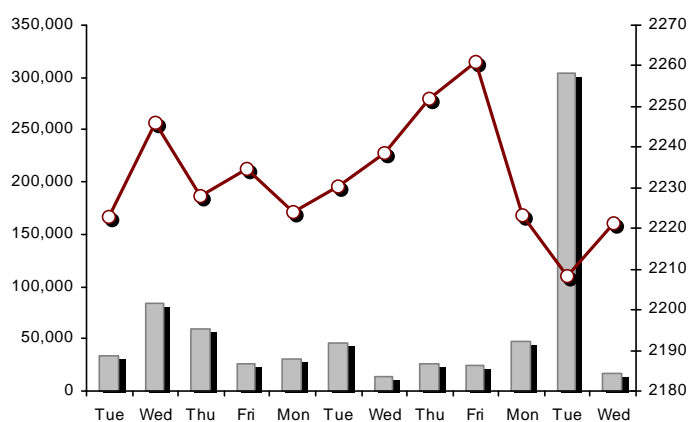


FTSE/ATHEX Mid & Small Cap Factor-Weighted Index

21/11/2018: 0.59%

ATHEX Mid & SmallCap Price Index

21/11/2018: 1.33%



Indices volume of transactions

Indices closing prices

Analytic Figures for Athex Market's Boards and Categories

	Total Traded Securities	Main Market	Surveillance	Exchange Traded Funds (ETFs)
Totals	112	100	11	1
Gain / Lose / Same:	42 / 45 / 25	37 / 43 / 20	5 / 1 / 5	0 / 1 / 0
Athex Capitalisation (mill. €) **	43,949.68	43,714.28	235.40	
Daily Average Trans/ons Value(thou.€)	55,398.80	55,403.09	32.36	51.03
Transactions Value	29,644.66	29,627.36	5.15	12.15
Main Board:	25,433.53	25,416.23	5.15	12.15
Blocks Board 6_2_3:	4,211.13	4,211.13	0.00	0.00
Forced Sales Board:	0.00	0.00	0.00	0.00
Special Terms Board:	0.00	0.00	0.00	0.00
Daily Average Transactions Volume	37,245,057	37,078,306	216,784	2,570
Transactions Volume	18,321,701	18,257,187	63,734	780
Main Board:	13,753,891	13,689,377	63,734	780
Blocks Board 6_2_3:	4,567,810	4,567,810	0	0
Forced Sales Board:	0	0	0	0
Special Terms Board:	0	0	0	0
Daily Average Number of Trades	20,302	20,207	93	2
Number of Trades	15,510	15,443	65	2
Main Board:	15,503	15,436	65	2
Blocks Board 6_2_3:	7	7	0	0
Forced Sales Board:	0	0	0	0
Special Terms Board:	0	0	0	0

Trading Details by Athex Sectors and Financial Instruments (ETFs)

Code	Sectors	Gain / Lose / Same	Number of Trades	Transactions Volume	Transactions Value	% of Total Trans. Value
8300	- Banks	5 / 1 / 0	5,450	13,021,502	9,619,918.99	32.45%
1700	- Basic Resources	4 / 1 / 1	202	99,404	113,394.47	0.38%
1300	- Chemicals	1 / 0 / 2	48	9,038	17,708.18	0.06%
2300	- Construction & Materials	3 / 7 / 4	767	170,469	735,031.85	2.48%
12000	- Financial Instruments	0 / 1 / 0	2	780	12,152.40	0.04%
8700	- Financial Services	1 / 2 / 0	205	157,343	107,867.23	0.36%
3500	- Food & Beverage	4 / 4 / 1	275	382,755	1,099,288.22	3.71%
4500	- Health Care	3 / 0 / 1	456	1,807,473	1,706,081.86	5.76%
2700	- Industrial Goods & Services	4 / 5 / 7	1,536	494,494	2,605,989.11	8.79%
8500	- Insurance	0 / 1 / 0	14	1,401	4,622.74	0.02%
5500	- Media	0 / 1 / 0	8	8,400	986.70	0.00%
500	- Oil & Gas	1 / 2 / 0	1,811	273,923	4,157,579.29	14.02%
3700	- Personal & Household Goods	4 / 4 / 4	714	239,943	2,221,130.40	7.49%
8600	- Real Estate	1 / 3 / 1	402	99,455	611,957.10	2.06%
5300	- Retail	1 / 1 / 1	16	1,465	3,191.36	0.01%
9500	- Technology	5 / 4 / 0	311	197,908	91,713.49	0.31%
6500	- Telecommunications	1 / 0 / 0	790	329,928	3,306,272.43	11.15%
5700	- Travel & Leisure	3 / 3 / 3	1,204	593,264	1,922,555.28	6.49%
7500	- Utilities	1 / 5 / 0	1,299	432,756	1,307,218.90	4.41%

Top 10 best & worst performing Shares

Main Market					
With positive Price change	Closing price	change	With negative Price change	Closing price	change
IASO SA (CR)	0.942	8.52% #	INTRALOT (CR)	0.518	-5.82% Ⓔ
ELVALHALCOR (CB)	1.165	4.96% #	SELONDA AQUACULTURE SA (CR)	0.0448	-4.68% Ⓔ
THRACE PLASTICS SA (CR)	1.97	3.96% #	J & P - AVAX SA (CR)	0.321	-3.31% Ⓔ
OPAP (CR)	7.915	3.60% #	TECHNICAL OLYMPIC SA (CR)	1.17	-2.50% Ⓔ
ALPHA BANK (CR)	1.104	3.18% #	THESSALONIKA WATER & SEWERAGE	4.07	-2.40% Ⓔ
OTE (CR)	10.1	2.96% #	ADMIE (IPTO) HOLDING S.A. (CR)	1.532	-1.54% Ⓔ
EKTER SA (CR)	1.09	2.83% #	GRIVALIA PROPERTIES (CR)	7.17	-1.38% Ⓔ
JUMBO SA (CR)	12.4	2.48% #	IKTINOS HELLAS SA (CR)	4.7	-1.26% Ⓔ
AEGEAN AIRLINES (CR)	6.9	2.22% #	HELLENIC EXCHANGES-A.S.E. (CR)	3.65	-1.22% Ⓔ
PIRAEUS BANK (CR)	0.96	2.13% #	KRI-KRI S.A. (CR)	4.33	-1.14% Ⓔ
With the highest Transactions Value	Value (thou. €)	change	With the highest Transactions Volume	Volume	change
MOTOR OIL (CR)	3,441.31	1.81% #	EUROBANK ERGASIAS (CR)	6,759,273	-0.58% Ⓔ
OTE (CR)	3,306.27	2.96% #	ALPHA BANK (CR)	3,028,183	3.18% #
ALPHA BANK (CR)	3,304.10	3.18% #	NATIONAL BANK (CR)	2,572,590	0.70% #
EUROBANK ERGASIAS (CR)	3,046.87	-0.58% Ⓔ	HYGEIA SA (CR)	1,454,573	0.00% ↘
NATIONAL BANK (CR)	2,608.05	0.70% #	PIRAEUS BANK (CR)	618,214	2.13% #
MYTILINEOS HOLDINGS (CR)	2,208.18	0.57% #	IASO SA (CR)	345,815	8.52% #
JUMBO SA (CR)	1,886.02	2.48% #	OTE (CR)	329,928	2.96% #
OPAP (CR)	1,557.66	3.60% #	INTRALOT (CR)	328,233	-5.82% Ⓔ
HYGEIA SA (CR)	1,381.84	0.00% ↘	SELONDA AQUACULTURE SA (CR)	322,157	-4.68% Ⓔ
CC HBC AG (CR)	1,066.35	1.15% #	MYTILINEOS HOLDINGS (CR)	310,653	0.57% #

Note: Stocks that are not included in the "Low Dispersion" and "Under Supervision" categories, and the transactions value is more than 10,000 €.

Derivatives Summary

	Number of Trades	Volume	Open Interest
Index Futures	227	875	4,062
FTSE/Athex Large Cap	227	875	4,062
Stock Futures	1,624	24,149	471,901
ADMIE (IPTO) HOLDING S.A. (CR)	48	286	9,025
ALPHA BANK (CR)	188	2,639	25,311
ATTICA BANK S.A. (CR)	1	1	336
CC HBC AG (CR)	5	18	188
CENERGY HOLDINGS (CB)	8	16	4,238
ELLAKTOR (CR)	25	63	4,688
EUROBANK ERGASIAS (CR)	239	4,749	32,095
EYDAP S.A. (CR)	3	11	637
FOURLIS (CR)	11	19	166
GEK TERNA (CR)	20	33	4,813
GRIVALIA PROPERTIES (CR)	4	6	181
HELLENIC EXCHANGES-A.S.E. (CR)	2	6	547
HELLENIC PETROLEUM (CR)	60	127	2,909
INTRACOM HOLDINGS (CR)	11	134	4,811
INTRALOT (CR)	103	1,045	4,893
JUMBO SA (CR)	32	66	1,078
LAMDA DEVELOPMENT SA (CR)	3	3	1,935
MARFIN INVESTMENT GROUP (CR)	12	300	52,336
MOTOR OIL (CR)	78	140	362
MYTILINEOS HOLDINGS (CR)	110	364	7,643
NATIONAL BANK (CR)	149	11,242	272,849
OPAP (CR)	95	326	3,212
OTE (CR)	131	454	2,334
P.P.A. S.A. (CR)	5	11	588
PIRAEUS BANK (CR)	135	1,324	14,941
PPC (CR)	98	544	8,274
TERNA ENERGY (CR)	13	50	5,969
TITAN CEMENT (CR)	2	4	218
VIOHALCO SA/NV (CB)	33	168	5,324
Index Options	35	235	1,436
FTSE/Athex Large Cap	35	235	1,436
Stock Options	0	0	1,090
ALPHA BANK (CR)	0	0	120
NATIONAL BANK (CR)	0	0	470
OPAP (CR)	0	0	0
OTE (CR)	0	0	0
PIRAEUS BANK (CR)	0	0	380
PPC (CR)	0	0	120
Total Derivatives Traded	1,886	25,259	478,489

Number of Outstanding Securities	Nominal Value	Dividends [1]			Date of Last Coupon Dividend [2]	Coupon Right	Note	Shares	Closing price	% change	Previous closing price/date	Open price	Price min	Price max	Last price	Avg price	Last Bid [7]	Last Ask [7]	P/E after	Year	Volume	Trades	Transactions Value[8]	Company Mkt Value (thou. €)	Year low	Year high	Sector[4]
--	------------------	---------------	--	--	-------------------------------------	-----------------	------	--------	------------------	----------	--------------------------------	---------------	--------------	--------------	---------------	--------------	-----------------	--------------	--------------	------	--------	--------	--------------------------	--------------------------------	-------------	--------------	---------------

Main Market - High Liquidity Class

1,543,699,381	0.300	---	---	---	07/04/2008	18/04/2017	---	ALPHA BANK (CR)	1.104	3.18 #	1.07	20/11/2018	1.074	1.071	1.117	1.104	1.091	4500@1.10	1500@1.11	---	---	3,028,183	1,761	3,304,097.13	1,704,244.12	1.05	2.252	8355
190,162,681		---	---	---		07/12/2016	---	CENERGY HOLDINGS (CB)	1.08	1.12 #	1.068	20/11/2018	1.078	1.05	1.08	1.08	1.072	750@1.06	4674@1.08	---	---	62,961	88	67,480.10	205,375.70	1.01	1.6	2727
371,365,550	6.70	0.4	0.44	0.54	28/06/2018	29/04/2013	---	CC HBC AG (CR)	25.59	1.15 #	25.3	20/11/2018	25.05	25.05	25.7	25.59	25.537	2230@25.59	100@25.74	---	---	41,757	130	1,066,347.76	9,503,244.42	24.93	31.9	3537
51,643,688	0.910	---	---	---	21/06/2010	24/07/2018	---	FOURLIS (CR)	4.405	0.11 #	4.4	20/11/2018	4.485	4.405	4.6	4.405	4.478	100@4.37	3079@4.40	---	---	24,323	192	108,916.61	227,490.45	4.33	6.26	3722
101,260,000	2.13	0.3134	0.1902	0.3646	23/03/2018	08/01/2014	---	GRIVALIA PROPERTIES (CR)	7.17	-1.38 €	7.27	20/11/2018	7.34	7.16	7.39	7.17	7.274	341@7.16	750@7.29	31.97	2016	46,283	233	336,670.38	726,034.20	7.16	9.65	8675
136,059,759	0.880	---	0.36	0.36	26/03/2018	05/03/2014	---	JUMBO SA (CR)	12.4	2.48 #	12.1	20/11/2018	12.1	12.02	12.6	12.4	12.449	1348@12.40	250@12.54	20.46	2016	151,503	333	1,886,015.02	1,687,141.01	10.56	16.4	3747
79,721,775	0.300	---	---	---	30/05/2007	23/06/2014	---	LAMDA DEVELOPMENT SA (CR)	5.8	---	5.8	20/11/2018	5.77	5.76	5.86	5.8	5.799	300@5.79	500@5.84	---	---	44,794	113	259,749.86	462,386.30	5.65	7.52	8633
939,510,748	0.300	---	---	---	26/04/2007	29/08/2014	---	MARFIN INVESTMENT GROUP (CR)	0.0699	1.60 #	0.069	20/11/2018	0.069	0.0686	0.0701	0.0699	0.07	5010@0.069	26000@0.070	---	---	130,624	42	9,113.33	65,671.80	0.0610	1836	8775
259,189,761		---	---	---		26/02/2016	---	VIOHALCO SA/NV (CB)	2.49	-0.40 €	2.5	20/11/2018	2.53	2.49	2.545	2.49	2.525	2800@2.48	100@2.52	---	---	100,213	194	253,040.23	645,382.50	2.44	4	2727
232,000,000	2.12	---	---	---	24/08/2018	19/06/2017	---	ADMIE (IPTO) HOLDING S.A. (CR)	1.532	-1.54 €	1.556	20/11/2018	1.58	1.532	1.584	1.532	1.545	2830@1.53	700@1.54	8.24	2017	68,683	162	106,109.65	355,424.00	1.52	2.28	7535
71,417,100	0.650	0.7	0.4	0.55	22/05/2018	27/06/2014	---	AEGEAN AIRLINES (CR)	6.9	2.22 #	6.75	20/11/2018	6.75	6.75	6.99	6.9	6.868	324@6.81	198@6.90	---	---	19,541	123	134,209.24	492,777.99	6.52	9.59	5751
103,423,291	0.570	---	---	---	01/08/2011	19/04/2016	---	GEK TERNA (CR)	4.4	-0.90 €	4.44	20/11/2018	4.42	4.32	4.42	4.4	4.373	10@4.34	654@4.40	---	---	26,981	141	117,985.78	455,062.48	4.285	5.64	2357
232,000,000	2.48	---	---	---	20/07/2015	12/12/2001	---	PPC (CR)	1.211	1.68 #	1.191	20/11/2018	1.2	1.182	1.235	1.211	1.214	1000@1.21	200@1.23	---	---	175,956	384	213,619.54	280,952.00	1.11	3.35	7535
914,715,153	3.00	---	---	---	16/05/2008	29/08/2018	---	NATIONAL BANK (CR)	1.009	0.70 #	1.002	20/11/2018	1.02	1	1.037	1.009	1.014	10000@1.01	781@1.01	---	---	2,572,590	1,409	2,608,047.30	922,947.59	1	3.55	8355
177,001,313	1.03	---	---	---	05/07/2011	20/12/2007	---	ELLAKTOR (CR)	1.224	-0.49 €	1.23	20/11/2018	1.23	1.214	1.23	1.224	1.222	2000@1.21	5080@1.22	---	---	23,956	126	29,284.28	216,649.61	1.204	2.155	2357
60,348,000	0.690	0.1026	0.065	0.0502	05/06/2018	06/08/2018	---	HELLENIC EXCHANGES-A.S.E. (CR)	3.65	-1.22 €	3.695	20/11/2018	3.7	3.65	3.725	3.65	3.683	3162@3.65	398@3.71	---	---	26,659	160	98,172.70	220,270.20	3.65	5.87	8777
305,635,185	2.18	---	---	0.4	02/07/2018	01/10/2003	---	HELLENIC PETROLEUM (CR)	6.99	-0.14 €	7	20/11/2018	7.1	6.99	7.17	6.99	7.036	1090@6.98	20@7.12	---	---	101,404	481	713,475.69	2,136,389.94	6.6	8.88	537
106,500,000	0.600	0.31	0.11	0.2	22/06/2018	28/01/2000	---	EYDAP S.A. (CR)	4.965	-0.10 €	4.97	20/11/2018	4.97	4.9	5.06	4.965	4.953	818@4.90	100@4.98	---	---	23,791	165	117,842.66	528,772.50	4.87	6.97	7577
156,961,721	0.300	---	---	---	30/05/2013	14/11/2007	---	INTRALOT (CR)	0.518	-5.82 €	0.55	20/11/2018	0.55	0.518	0.554	0.518	0.541	1000@0.516	600@0.521	---	---	328,233	281	177,691.38	81,306.17	0.518	1.512	5752
110,782,980	0.750	0.65	0.9	1.3	26/06/2018	04/11/2013	---	MOTOR OIL (CR)	20.2	1.81 #	19.84	20/11/2018	19.9	19.88	20.5	20.2	20.21	370@20.15	100@20.40	---	---	170,274	1,320	3,441,309.45	2,237,816.20	16.88	23.9	533
142,891,161	0.970	---	---	0.32	11/06/2018	07/07/2017	---	MYTILINEOS HOLDINGS (CR)	7.06	0.57 #	7.02	20/11/2018	7.1	6.99	7.25	7.06	7.108	650@7.05	500@7.10	---	---	310,653	1,114	2,208,178.30	1,008,811.60	6.99	10.76	2727
25,000,000	2.00	0.1114	0.0892	0.1712	19/07/2018	08/08/2003	---	P.P.A. S.A. (CR)	15.04	-1.05 €	15.2	20/11/2018	15.2	15.04	15.68	15.04	15.192	601@15.04	44@15.36	33.31	2017	1,166	62	17,713.90	376,000.00	15	17.7	2777
319,000,000	0.300	0.7	0.72	0.4	12/10/2018	25/04/2001	---	OPAP (CR)	7.915	3.60 #	7.64	20/11/2018	7.7	7.68	7.98	7.915	7.862	5000@7.84	500@7.92	---	---	198,130	718	1,557,663.59	2,524,885.00	7.64	11.15	5752
490,150,389	2.83	0.1	0.16	0.3529	28/06/2018	18/06/1998	---	OTE (CR)	10.1	2.96 #	9.81	20/11/2018	9.85	9.84	10.14	10.1	10.021	15000@10.00	1000@10.12	---	---	329,928	790	3,306,272.43	4,950,518.93	9.39	12.81	6535
436,659,164	6.00	---	---	---	16/05/2008	31/07/2017	---	PIRAEUS BANK (CR)	0.96	2.13 #	0.94	20/11/2018	0.954	0.9205	0.97	0.96	0.955	7000@0.959	6890@0.970	---	---	618,214	719	590,671.92	419,192.80	0.92	3.934	8355
69,877,484	0.780	(0.08)	(0.0875)	(0.14)	24/05/2018	13/06/2018	---	GR. SARANTIS S.A. (CR)	6.74	0.30 #	6.72	20/11/2018	6.72	6.72	6.9	6.74	6.816	125@6.74	266@6.76	---	---	30,922	99	210,762.44	470,974.24	6.325	8.275	3767
113,918,936	0.300	0.0935	0.0939	0.0419	10/01/2018	02/07/2018	---	TERNA ENERGY (CR)	6.16	-0.65 €	6.2	20/11/2018	6.14	6.1	6.21	6.16	6.137	2050@6.12	3392@6.16	---	---	131,031	443	804,141.66	701,740.65	4.4	6.54	7537
77,063,568	3.45	0.3099	0.1049	0.0527	25/06/2018	26/06/2018	---	TITAN CEMENT (CR)	19.5	-0.51 €	19.6	20/11/2018	19.42	19.4	19.8	19.5	19.527	200@19.44	150@19.70	---	---	24,797	218	484,213.82	1,644,279.13	18.22	25.35	2353
2,185,998,765	0.300	---	---	---	02/05/2008	27/11/2015	---	EUROBANK ERGASIAS (CR)	0.4444	-0.58 €	0.447	20/11/2018	0.4602	0.4444	0.4636	0.4444	0.451	10913@0.444	6803@0.452	---	---	6,759,273	1,456	3,046,871.30	971,457.85	0.44	1.058	8355

Main Market - Medium Liquidity Class

13,126,020	0.560	---	---	---	08/07/2010	07/09/2018	---	AS COMPANY SA (CR)	2.6	13.04 #	2.3	20/11/2018	2.26	2.26	2.6	2.6	2.429	100@2.28	1542@2.60	---	---	1,155	13	2,805.96	34,127.65	1.58	2.7	5379
461,254,013	0.300	---	---	---	04/06/2008	30/04/2018	---	ATTICA BANK S.A. (CR)	0.12	0.84 #	0.119	20/11/2018	0.1192	0.1192	0.1222	0.12	0.122	497@0.120	4029@0.122	---	---	37,782	17	4,597.79	55,350.48	0.1190	5071	8355
12,213,750	0.320	0.85	0.85	1.1	17/05/2018	22/11/2013	---	AUTOHELLAS SA (CR)	22.4	---	22.4	20/11/2018	22.4	22.4	22.4	22.4	22.4	25@20.40	13@22.40	---	---	153	3	3,427.20	273,588.00	20.4	26	5759
11,921,531	2.33	---	---	0.035	24/04/2018	31/07/2017	---	BRIQ PROPERTIES (CR)	2.01	-0.99 €	2.03	20/11/2018	1.98	1.98	2.03	1.99	2.012	858@1.99	1000@2.08	10.69	2017	362	5	728.18	23,962.28	1.72	2.13	8671
101,123,806	0.360	---	---	---	22/07/2010	28/06/2011	---	CENTRIC HOLDINGS (CR)	0.106	---	0.106	20/11/2018	0.11	0.104	0.11	0.104	0.106	649@0.104	2475@0.109	---	---	9,050	6	959.20	10,719.12	0.1	0.209	5752
784,500	10.00	---	---	---		31/07/2018	---	CNL CAPITAL (CR)	9.684	-1.18 €	9.8	20/11/2018	9.7	9.68	9.7	9.68	9.687	950@7.04	80@9.70	---	---	60	3	581.20	7,597.10	9.49	10.44	8775
9,907,500	0.300	---	---	---	06/10/2005	13/02/2002	---	CPI SA (CR)	0.18	-10.00 €	0.2	20/11/2018	0.18	0.18	0.18	0.18	0.18	100@0.180	299@0.198	---	2018	4,900	4	882.00	1,783.35	0.122	0.36	9572

Number of Outstanding Securities	Nominal Value	Dividends [1]			Date of Last Coupon		Note	Shares	Closing price	% change	Previous closing price/date		Open price	Price min	Price max	Last price	Avg price	Last Bid [7]	Last Ask [7]	P/E after	Year	Volume	Trades	Transactions Value[8]	Company Mkt Value (thou. €)	Year low	Year high	Sector[4]	
		2015	2016	2017	Dividend [2]	Right																							
11,720,024	0.540	---	---	---	21/08/2014	01/08/2018	---	FLEXOPACK SA (CR)	7	---	↘	7	20/11/2018	---	---	---	---	500@6.65	100@7.00	---	---	---	---	---	82,040.17	5.35	7.5	2723	
10,500,000	4.00	---	0.28	0.31	05/06/2018	02/08/2016	---	INTERCONTINENTAL (CR)	5.2	-1.89	€	5.3	20/11/2018	5.3	5.2	5.45	5.2	5.268	80@5.20	22@5.40	8.73	2016	900	4	4,741.35	54,600.00	4.7	6.1	8674
76,000,000	1.00	---	---	---	03/07/2007	17/09/2018	---	INTRACOM HOLDINGS (CR)	0.679	1.19	#	0.671	20/11/2018	0.68	0.666	0.689	0.679	0.675	600@0.669	200@0.678	---	---	62,476	196	42,141.56	51,604.00	0.666	1.7203	9578
30,477,156	0.300	---	---	---	12/08/2008	17/10/2017	---	INTRACOM CONSTR. (CR)	1.04	1.46	#	1.025	20/11/2018	1.06	1.02	1.06	1.04	1.049	1041@1.02	500@1.04	---	---	7,911	12	8,301.17	31,696.24	0.88	1.6	2357
77,654,850	0.300	---	---	---	01/07/2011	21/02/2003	---	J & P - AVAX SA (CR)	0.321	-3.31	€	0.332	20/11/2018	0.336	0.3165	0.344	0.321	0.328	676@0.317	533@0.321	---	---	48,702	110	15,965.84	24,927.21	0.3165	1.05	2357
468,700	1	0.73	0.73	24/08/2017	21/05/2004	---	---	MERMEREN KOMB. A.D. PR. (GDR)	52.8	1.15	#	52.2	20/11/2018	53.8	51	54	52.8	52.341	9@51.00	35@52.80	2.33	2017	88	14	4,606.00	24,747.36	14.8	66.6	1775
10,500,000	0.950	---	---	---	24/06/2008	30/06/2017	---	MEVACO SA (CR)	0.935	-2.60	€	0.96	20/11/2018	0.935	0.92	0.96	0.96	0.935	500@0.930	190@0.960	---	2017	1,400	6	1,309.20	9,817.50	0.92	1.15	2757
12,417,000	0.310	---	---	---	28/07/2008	28/08/2017	---	MLS MULTIMEDIA SA (CR)	4.64	1.09	#	4.59	20/11/2018	4.53	4.52	4.64	4.64	4.554	100@4.51	132@4.64	31.52	2017	2,624	29	11,948.41	57,614.88	3.99	4.75	9537
11,812,193	0.470	---	---	---	29/05/2018	15/11/2006	---	PROFILE SA (CR)	1.22	3.39	#	1.18	20/11/2018	1.18	1.17	1.22	1.22	1.194	100@1.20	995@1.20	---	---	1,196	11	1,428.32	14,410.88	0.7	1.625	9533
27,345,120	0.470	---	---	---	18/07/2005	26/02/2014	---	QUALITY & RELIABILITY SA (CR)	0.231	0.44	#	0.23	20/11/2018	0.23	0.225	0.24	0.231	0.23	3000@0.225	2745@0.231	---	---	124,405	44	28,605.18	6,316.72	0.181	0.365	9533
11,913,632	0.680	---	---	---	05/09/2008	08/11/2017	---	QUEST HOLDINGS (CR)	13.65	0.37	#	13.6	20/11/2018	13.8	13.6	13.8	13.65	13.69	200@13.55	200@13.75	---	---	162	9	2,217.80	162,621.08	9.3	14.8	9533
3,125,463	0.300	---	---	---	16/11/1992	07/02/2017	---	UNIBIOS (CR)	0.305	-0.97	€	0.308	20/11/2018	0.305	0.305	0.305	0.305	0.305	325@0.286	460@0.303	---	---	50	1	15.25	953.27	0.26	0.82	2353
22,016,250	0.370	---	---	---	15/07/2009	11/05/2000	---	ALUMIL (CR)	0.146	8.96	#	0.134	20/11/2018	0.134	0.134	0.146	0.146	0.139	200@0.144	200@0.149	---	---	2,934	9	406.40	3,214.37	0.1305	0.462	1753
24,060,000	0.300	0.01	0.01	0.01	02/07/2018	02/07/2018	---	GEN. COMMERCIAL & IND.SA (CR)	0.65	5.69	#	0.615	20/11/2018	0.61	0.61	0.655	0.65	0.616	34@0.615	1530@0.650	---	---	1,597	9	983.11	15,639.00	0.49	0.76	2797
13,673,200	0.880	---	---	---	18/07/2008	26/07/2001	---	EVROFARMA SA (CR)	0.575	2.68	#	0.56	20/11/2018	0.53	0.53	0.575	0.575	0.566	7100@0.535	2495@0.560	---	---	1,150	10	651.02	7,862.09	0.324	0.68	3577
27,848,000	0.300	0.0084	---	0.0034	20/08/2018	02/09/2003	---	NEWSPHONE HELLAS SA (CR)	0.312	-1.89	€	0.318	20/11/2018	0.314	0.31	0.344	0.344	0.313	2150@0.316	950@0.344	---	---	2,150	4	672.40	8,688.58	0.23	0.458	2791
11,250,000	0.520	0.04	0.04	---	24/07/2017	09/11/2015	---	EKTER SA (CR)	1.09	2.83	#	1.06	20/11/2018	1.07	1.06	1.1	1.09	1.075	1000@1.08	2500@1.10	---	---	14,167	53	15,229.00	12,262.50	0.63	1.28	2357
82,667,000	0.300	---	---	---	22/07/2014	---	---	ELTECH ANEMOS S.A. (CR)	1.64	-0.61	€	1.65	20/11/2018	1.63	1.615	1.65	1.64	1.632	500@1.62	2100@1.65	---	---	28,726	67	46,874.46	135,573.88	1.525	2.12	7537
18,410,839	1.00	---	---	---	07/07/2009	10/09/2010	---	ELASTRON (CR)	1.125	---	↘	1.125	20/11/2018	1.095	1.095	1.125	1.125	1.107	300@1.07	195@1.13	-(6)-	2017	1,650	15	1,825.85	20,712.19	1.09	1.74	1757
375,241,586	0.390	---	---	---	26/06/2008	14/07/2006	---	ELVALHALCOR (CB)	1.165	4.96	#	1.11	20/11/2018	1.11	1.11	1.175	1.165	1.158	360@1.16	400@1.17	---	---	91,516	155	105,998.18	437,156.45	1.1	2.1	1755
19,864,886	5.60	0.672	0.672	0.672	08/03/2018	02/07/2008	---	BANK OF GREECE (CR)	12.1	0.41	#	12.05	20/11/2018	11.95	11.95	12.2	12.1	12.021	74@12.10	73@12.15	---	---	5,460	88	65,633.55	240,365.12	11.95	19.2	8355
36,300,000	1.12	0.25	0.228	0.221	28/06/2018	12/12/2007	---	THESSALONIKA WATER & SEWERAGE	4.07	-2.40	€	4.17	20/11/2018	4.19	4.07	4.19	4.07	4.078	3982@4.07	500@4.14	---	---	4,569	78	18,630.93	147,741.00	4	5.22	7577
122,156,754	0.440	---	---	---	24/11/2014	28/03/2018	---	IASO SA (CR)	0.942	8.52	#	0.868	20/11/2018	0.874	0.874	0.958	0.942	0.929	2000@0.938	2384@0.950	---	---	345,815	379	321,434.73	115,071.66	0.65	1.0714	4533
28,580,100	0.400	---	---	0.22	01/10/2018	04/07/2016	---	IKTINOS HELLAS SA (CR)	4.7	-1.26	€	4.76	20/11/2018	4.76	4.65	4.9	4.7	4.716	13@4.65	6163@4.68	---	---	4,392	51	20,710.78	134,326.47	2.18	6.56	2353
8,226,132	0.900	---	---	---	15/05/2009	13/10/2014	---	ILYDA S.A. (CR)	0.208	-5.45	€	0.22	20/11/2018	0.186	0.186	0.208	0.208	0.199	300@0.192	970@0.208	6.56	2016	1,065	8	212.31	1,711.04	0.164	0.268	9537
11,233,200	0.730	---	---	---	12/07/2010	30/07/1999	---	INTERTECH SA (CR)	0.252	---	↘	0.252	20/11/2018	---	---	---	---	---	100@0.181	100@0.260	---	2017	---	---	---	2,830.77	0.188	0.54	9572
19,804,134	0.300	---	---	---	01/07/2004	06/11/2017	---	KEKROPS SA (CR)	1.4	0.72	#	1.39	20/11/2018	1.43	1.39	1.45	1.4	1.415	717@1.40	90@1.42	---	2017	7,116	47	10,067.33	27,725.79	0.72	1.84	8633
33,065,136	0.380	0.06	0.09	0.115	23/08/2018	16/09/2013	---	KRI-KRI S.A. (CR)	4.33	-1.14	€	4.38	20/11/2018	4.35	4.25	4.35	4.33	4.279	121@4.28	819@4.35	19.51	2017	3,029	17	12,961.50	143,172.04	3	4.9	3577
7,595,160	0.600	---	---	0.0263	04/09/2018	18/08/2010	---	KIRIAKOU LIS SHIPPING SA (CR)	0.85	-5.03	€	0.895	20/11/2018	0.85	0.85	0.85	0.85	0.85	500@0.810	500@1.15	---	---	150	2	127.50	6,455.89	0.62	1.61	5759
9,819,370	0.690	---	---	---	14/08/2007	09/01/2004	---	MATHIOS REFRACTORY SA (CR)	0.192	---	↘	0.192	20/11/2018	---	---	---	---	---	200@0.186	1000@0.248	---	---	---	---	---	1,885.32	0.148	0.362	2353
294,016,812	0.300	---	---	---	08/07/2008	21/03/2016	---	NIREFS SA (CR)	0.164	2.50	#	0.16	20/11/2018	0.16	0.16	0.164	0.164	0.16	992@0.161	1400@0.164	---	---	11,900	5	1,904.70	48,218.76	0.118	0.337	3573
25,118,410	0.610	---	---	---	17/08/2000	10/09/2018	---	PAPOUTSANIS (CR)	0.808	-1.22	€	0.818	20/11/2018	0.81	0.8	0.81	0.808	0.808	160@0.800	674@0.808	48.82	2017	2,100	10	1,696.54	20,295.68	0.504	0.904	3767
17,240,776	0.370	---	---	---	14/07/2005	30/09/2003	---	PERSEUS SA (CR)	1	---	↘	1	20/11/2018	---	---	---	---	---	500@0.945	50@0.990	9.33	2017	---	---	---	17,240.78	0.33	1.14	3577
22,075,665	0.330	0.08	0.05</																										

Number of Outstanding Securities	Nominal Value	Dividends [1]			Date of Last Coupon		Note	Shares	Closing price	% change	Previous closing price/date		Open price	Price min	Price max	Last price	Avg price	Last Bid [7]	Last Ask [7]	P/E after	Year	Volume	Trades	Transactions Value[8]	Company Mkt Value (thou. €)	Year low	Year high	Sector[4]	
		2015	2016	2017	Dividend [2]	Right																							
305,732,436	0.410	---	---	---	08/07/2009	28/09/2011	---	HYGEIA SA (CR)	0.95	---	↘	0.95	20/11/2018	0.95	0.95	0.95	0.95	955417929@0.950	10400@0.963	---	---	1,454,573	59	1,381,844.35	290,445.81	0.558	0.988	4533	
10,203,575	0.730	---	---	---	16/07/2007	18/10/1999	---	FIERATEX SA (CR)	0.178	-19.09	↘	0.22	20/11/2018	0.178	0.178	0.178	0.178	200@0.180	1500@0.214	---	2017	60	2	10.68	1,816.24	0.128	0.318	3763	
8,340,750	1.16	---	---	---	25/06/2009	17/09/2018	---	HAIDEMENOS SA (CR)	0.48	---	↘	0.48	20/11/2018	0.48	0.48	0.48	0.48	474@0.480	200@0.510	---	2017	364	4	174.72	4,003.56	0.312	0.7	2791	
Main Market - Low Liquidity Class																													
14,000,000	4.15	---	---	---	23/04/2010	29/06/1999	---	ALPHA REAL ESTATE SA(CR)	6	---	↘	6	20/11/2018	---	---	---	---	20@5.95	5@6.05	---	---	---	---	---	84,000.00	5.7	7.5	8637	
215,805,843	0.300	---	---	---	20/07/2009	29/12/2010	---	ATTICA HOLDINGS (CR)	1.16	-0.86	↘	1.17	20/11/2018	1.15	1.15	1.19	1.16	1.169	200@1.15	470@1.19	---	---	10,175	43	11,899.56	250,334.78	1.151	1.7962	5759
51,119,369	0.700	---	---	---	01/07/2008	01/03/2010	---	AUDIO VISUAL ENTERPRISES (CR)	0.12	-0.83	↘	0.121	20/11/2018	0.121	0.109	0.122	0.12	0.117	500@0.110	600@0.117	---	---	8,400	8	986.70	6,134.32	0.087	0.169	5553
15,816,009	0.300	---	---	---	01/07/2009	17/07/2000	---	BYTE COMPUTER SA (CR)	0.5	---	↘	0.5	20/11/2018	---	---	---	---	---	200@0.550	---	---	---	---	---	7,908.00	0.45	0.705	9533	
52,800,154	0.300	---	---	---	20/08/2014	21/06/2004	---	F.G. EUROPE S.A. (CR)	0.326	---	↘	0.326	20/11/2018	0.296	0.296	0.326	0.326	0.326	43@0.326	---	---	765	2	249.15	17,212.85	0.294	0.77	3722	
20,578,374	0.620	0.07	0.07	0.1	08/06/2018	18/05/2015	---	INFORM P. LYKOS SA (CR)	0.73	---	↘	0.73	20/11/2018	0.73	0.73	0.73	0.73	0.73	50@0.710	50@0.740	---	---	50	1	36.50	15,022.21	0.66	0.998	2791
4,740,000	0.860	---	---	---	14/03/2003		---	LOGISMOS S.A. (CR)	0.392	---	↘	0.392	20/11/2018	---	---	---	---	---	500@0.392	700@0.430	45.99	2017	---	---	---	1,858.08	0.318	0.48	9533
6,200,000	0.500	---	---	---	22/06/2010	01/11/1995	---	MINERVA KNITWEAR SA (CB)	0.162	---	↘	0.162	20/11/2018	0.178	0.178	0.178	0.178	0.178	---	5511@0.178	---	---	20	1	3.56	1,004.40	0.157	0.432	3763
22,996,875	1.25	---	---	---	24/06/2011	02/02/2016	---	NEXANS HELLAS SA (CR)	1.61	-1.83	↘	1.64	20/11/2018	1.63	1.61	1.63	1.61	1.612659376@1.61	1000@1.65	---	2017	500	6	805.86	37,024.97	1.13	1.82	2733	
3,953,090	0.300	0.11	0.2	0.16	30/08/2018	05/12/2012	---	PAPERPACK (CR)	3	---	↘	3	20/11/2018	3	3	3	3	3	1236@3.00	410@3.18	8.50	2017	774	3	2,322.00	11,859.27	2.2	3.7	2723
57,434,884	1.31	---	---	---	05/06/2008	12/06/2009	---	REDS S.A. (CR)	0.74	---	↘	0.74	20/11/2018	---	---	---	---	---	600@0.725	2000@0.750	---	---	---	---	---	42,501.81	0.72	1.05	8633
6,456,530	1.08	---	---	---	04/07/2018	02/08/2010	---	SPACE HELLAS SA (CR)	5.1	-1.92	↘	5.2	20/11/2018	5.1	5.1	5.1	5.1	5.1	99@4.98	34@5.15	---	---	100	1	510.00	32,928.30	3.6	7.25	9578
80,690,653	0.500	---	---	---	25/04/2014	22/12/2016	---	TRASTOR REAL EST. INV. CO.(CR)	0.8	---	↘	0.8	20/11/2018	---	---	---	---	---	868@0.750	1200@0.845	-(6)-	2017	---	---	---	64,552.52	0.685	0.9	8671
417,608	16.00	---	---	0.75	05/04/2018	05/03/2013	---	ANDROMEDA SA (CR)	19.8	---	↘	19.8	20/11/2018	---	---	---	---	---	2600@20.00	3608@21.60	3.94	2017	---	---	---	8,268.64	18	23.6	8985
15,300,000	0.300	---	---	---	30/07/2009	13/12/1999	---	ATTICA PUBLICATIONS SA (CR)	0.505	---	↘	0.505	20/11/2018	---	---	---	---	---	220@0.555	---	---	---	---	---	7,726.50	0.45	0.66	5557	
18,810,000	0.400	---	---	---	08/07/2010	14/11/2007	---	VARVERIS - MODA BAGNO SA (CR)	0.49	---	↘	0.49	20/11/2018	---	---	---	---	---	14915@0.442	---	---	---	---	---	9,216.90	0.442	0.49	2353	
23,986,500	1.05	---	---	---	26/06/2009	15/03/2000	---	BIOKARPET S.A.(CR)	0.52	---	↘	0.52	20/11/2018	---	---	---	---	---	550@0.520	---	---	---	---	---	12,472.98	0.296	0.705	3726	
4,968,600	2.88	---	---	---	01/07/1998	14/12/1998	---	VIS SA (CR)	0.935	---	↘	0.935	20/11/2018	---	---	---	---	---	1000@0.850	---	---	2017	---	---	---	4,645.64	0.72	1.03	2723
6,325,000	0.600	---	0.11	0.15	03/07/2018	17/02/2014	---	VOGIATZOGLOU SYSTEMS SA (CR)	2.1	---	↘	2.1	20/11/2018	---	---	---	---	---	944@2.06	---	---	---	---	---	13,282.50	1.36	2.32	2797	
8,418,750	0.300	0.12	0.3	0.28	19/06/2018	27/06/2012	---	GEKE SA (CB)	4.98	---	↘	4.98	20/11/2018	---	---	---	---	---	500@4.70	145@5.00	16.71	2017	---	---	---	41,925.38	4.38	5.9	5753
15,000,000	0.300	---	---	---	06/07/2007	18/07/2000	---	DAIOS PLASTICS SA (CR)	2.8	---	↘	2.8	20/11/2018	2.8	2.8	2.8	2.8	2.8	200@2.72	---	---	---	17	1	47.60	42,000.00	2.52	2.88	1357
34,720,000	0.310	---	---	---	16/06/2010	01/08/2007	---	DROMEAS SA (CR)	0.193	-3.50	↘	0.2	20/11/2018	0.195	0.193	0.2	0.193	0.194	10@0.193	2104@0.200	---	---	4,980	16	966.85	6,700.96	0.18	0.352	3726
255,494,534	3.00	0.2035	0.2	0.22	08/05/2018	23/12/2015	---	NBG PANGAEA (CR)	4.72	---	↘	4.72	20/11/2018	---	---	---	---	---	500@4.34	---	---	---	---	---	1,205,934.20	4.26	5.25	8671	
3,307,500	0.710	---	---	---	11/08/2010	15/12/2017	---	ELVE SA (CR)	3.16	---	↘	3.16	20/11/2018	3.3	3.3	3.3	3.3	3.3	50@3.18	---	---	---	25	1	82.50	10,451.70	2.48	3.58	3763
31,734,530	1.60	---	---	---	09/07/2007	19/07/2006	---	ELGEKA SA (CR)	0.139	---	↘	0.139	20/11/2018	---	---	---	---	---	700@0.127	---	---	---	---	---	---	4,411.10	0.126	0.264	3577
23,828,130	0.500	0.16	0.052	0.06	18/07/2018	17/02/2009	---	ELINOIL S.A. (CR)	1.23	-3.15	↘	1.27	20/11/2018	1.26	1.23	1.27	1.23	1.245	130@1.24	200@1.30	---	---	2,245	10	2,794.15	29,308.60	1.23	1.95	537
26,730,187	0.520	---	---	0.04	09/07/2018	01/08/2017	---	ELTON SA (CR)	1.175	---	↘	1.175	20/11/2018	1.215	1.215	1.215	1.215	1.215	100@1.17	100@1.22	15.14	2017	50	1	60.75	31,407.97	1.09	1.71	1353
14,050,971	0.340	---	---	---	13/12/2017	21/02/2018	---	ELTRAK SA (CR)	2	---	↘	2	20/11/2018	2.12	2.12	2.12	2.12	2.12	2000@2.00	45@2.10	---	---	7	1	14.84	28,101.94	1.96	3.82	2753
27,503,677	0.630	0.06	0.1	0.12	30/05/2018	18/10/1999	---	EUROPEAN RELIANCE INSUR. (CR)	3.3	-0.60	↘	3.32	20/11/2018	3.37	3.27	3.37	3.3	3.3	316@3.29	19@3.35	---	---	1,401	14	4,622.74	90,762.13	3.26	4.05	8536
86,735,980	0.310	---	---	---	06/07/2009	02/01/2002	---	ATHENS MEDICAL CENTER SA (CR)	0.99	1.02	#	0.98	20/11/2018	0.965	0.96	1	0.98	0.993	466@0.980	1000@1.00	---	---	2,210	12	2,195.35	85,868.62	0.96	1.62	4533
8,298,467	0.400	---	---	---	30/08/1993	08/05/2013	---	IDEAL GROUP SA (CR)	0.835	---	↘	0.835	20/11/2018	---	---	---	---	---	96@0.915	---	---	---	---	---	6,929.22	0.675	0.995	9574	
2,566,836	0.440	---	---	---	13/08/2010	09/01/2007	---	INTERWOOD-XYLEMPORIA (PR)	0.066	---	↘	0.066	20/11/2018	---	---	---	---	---	18451@0.073	---	---	---	---	---	---	2,950.83	0.060	0.0725	2353
34,986,430	0.440	---	---	---	25/07/2008	23/02/2010	---	INTERWOOD-XYLEMPORIA (CR)	0.0795	---	↘	0.08	20/11/2018	---	---	---	---	---	4000@0.073	---	---	---	---	---	---	2,950.83	0.078	0.148	2353
7,500,000	0.330	---	---	---	19/06/2015	11/07/2018	---	S.KANAKIS SA (CR)	3.42	-0.58	↘	3.44	20/11/2018	3.4	3.4	3.54	3.42	3.463	500@3.46	100@3.50	11.67	2017	384	5	1,329.60	25,650.00	3.16	4.2	3577

Number of Outstanding Securities	Nominal Value	Dividends [1]			Date of Last Coupon		Note	Shares	Closing price	% change	Previous closing		Open price	Price min	Price max	Last price	Avg price	Last Bid [7]	Last Ask [7]	P/E after	Year	Volume	Trades	Transactions Value[8]	Company Mkt Value (thou. €)	Year low	Year high	Sector[4]		
		2015	2016	2017	Dividend [2]	Right					price/date	price/date																		
9,742,920	0.400	0.01	---	---	12/08/2016	14/07/2000	---	KARAMOLEGOS SA (CR)	1.7	---	↘	1.7	20/11/2018	---	---	---	---	---	---	7444@1.53	---	---	---	---	---	16,562.96	1.53	2.46	3577	
14,679,792	1.68	---	0.07	---	28/06/2017	04/09/2000	---	KARATZIS SA (CR)	5.85	---	↘	5.85	20/11/2018	5.65	5.65	5.85	5.85	5.775	250@5.85	655@6.40	---	---	160	3	924.00	85,876.78	5.2	7.95	2723	
2,760,000	11.83	8.5	9.2	9.2	23/07/2018	16/07/1990	---	KARELIA TOBACCO CO. SA (CB)	252	---	↘	252	20/11/2018	---	---	---	---	10@250.00	60@254.00	---	---	---	---	---	695,520.00	244	306	3785		
6,700,000	0.800	0.023	0.028	0.028	28/06/2018	29/05/2014	---	MILLS KEPENOS (CR)	1.3	---	↘	1.3	20/11/2018	---	---	---	---	100@1.26	---	28.10	2017	---	---	---	---	8,710.00	1.17	2	3577	
40,219,218	0.300	---	---	---	02/07/2018	09/07/2013	---	KLOUKINAS - LAPPAS SA (CR)	0.56	1.82	#	0.55	20/11/2018	0.562	0.56	0.562	0.56	0.561	50@0.550	50@0.560	---	---	600	4	336.30	22,522.76	0.512	0.842	2357	
11,510,102	0.890	---	---	---	24/06/2005	06/10/1999	---	NAFPAKTOS TEXTILE IND. SA (CB)	0.446	---	↘	0.446	20/11/2018	---	---	---	---	550@0.446	1000@0.490	---	---	---	---	---	---	5,133.51	0.31	0.665	3763	
21,224,340	0.420	---	0.01	0.005	10/09/2018	25/04/2006	---	KORDELLOS BROS SA (CR)	0.346	---	↘	0.346	20/11/2018	---	---	---	---	1500@0.316	500@0.330	36.42	2017	---	---	---	---	7,343.62	0.3	0.555	1757	
29,480,000	0.420	---	---	---	19/07/2010	01/08/2007	---	KRETA FARM SA (CR)	0.442	6.00	#	0.417	20/11/2018	0.438	0.42	0.442	0.442	0.442	327@0.422	660@0.442	---	---	2,032	7	897.62	13,030.16	0.414	0.84	3577	
18,017,472	0.360	---	---	---	15/06/2010	28/08/2017	---	KTIMA KOSTAS LAZARIDIS SA (CR)	0.68	---	↘	0.68	20/11/2018	---	---	---	---	1650@0.625	1322@0.745	---	---	---	---	---	---	12,251.88	0.5	0.8	3535	
21,364,000	1.12	---	---	0.2	28/06/2018	10/08/2005	---	LAMPSPA HOTEL SA (CR)	18.2	---	↘	18.2	20/11/2018	---	---	---	---	2@17.90	278@18.20	---	---	---	---	---	---	388,824.80	16.5	19	5753	
5,939,268	0.620	---	---	---	10/07/2003	03/01/2002	---	LANAKAM SA (CR)	0.33	---	↘	0.33	20/11/2018	---	---	---	---	---	---	183@0.346	---	2017	---	---	---	---	1,959.96	0.228	0.57	3763
8,321,682	0.670	---	---	---	17/08/2007	23/11/1999	---	N. LEVEDERIS SA (CB)	0.165	---	↘	0.165	20/11/2018	---	---	---	---	---	---	742@0.149	---	2017	---	---	---	---	1,956.42	0.125	0.208	1757
2,160,524	0.670	0.0436	0.0436	---	07/08/2017	23/11/1999	---	N. LEVEDERIS SA (PB)	0.27	---	↘	0.27	20/11/2018	---	---	---	---	5000@0.244	8000@0.296	---	2017	---	---	---	---	---	1,956.42	0.182	0.3	1757
17,120,280	0.940	---	---	---	01/06/2010	09/07/2018	---	LOULIS MILLS SA (CR)	1.98	-3.88	€	2.06	20/11/2018	1.98	1.98	1.98	1.98	1.98	850@1.94	850@2.00	---	---	300	1	594.00	33,898.15	1.9	2.56	3577	
106,980,050	2.25	---	---	---	25/07/2008	24/02/2014	---	MINOAN LINES SA (CR)	2.4	---	↘	2.4	20/11/2018	2.4	2.4	2.4	2.4	2.4	5005@2.34	9784@2.40	---	---	15,000	17	36,000.00	256,752.12	2.24	2.64	5759	
11,700,000	0.360	---	---	---	02/06/2009	04/07/2018	---	MOTODYNAMICS S.A. (CR)	0.82	---	↘	0.82	20/11/2018	0.83	0.83	0.83	0.83	0.83	1600@0.800	1563@0.840	---	---	100	1	83.00	9,594.00	0.61	1.2	5379	
32,188,050	1.04	---	---	---	21/07/2008	20/01/2000	---	EL. D. MOUZAKIS SA (CB)	0.274	---	↘	0.274	20/11/2018	---	---	---	---	200@0.254	2000@0.274	---	---	---	---	---	---	8,819.53	0.258	0.446	3763	
6,340,000	0.600	---	---	---	31/10/2018	06/11/2017	---	NAKAS MUSIC	1.44	-10.00	€	1.6	20/11/2018	1.44	1.44	1.44	1.44	1.44	4@1.54	---	12.14	2017	210	2	302.40	9,129.60	1.15	1.85	5379	
3,873,120	0.300	---	---	---	07/07/2008	04/10/2012	---	DRUCKFARBEN HELLAS (CR)	0.92	---	↘	0.92	20/11/2018	---	---	---	---	---	---	---	---	---	---	---	---	---	3,563.27	0.83	1.4	1357
10,080,000	3.00	0.58	0.49	0.45	05/07/2018	27/08/2001	---	TPA SA (CR)	25.8	---	↘	25.8	20/11/2018	25.8	25.7	25.8	25.8	25.777	1@25.80	43@26.00	35.91	2017	1,843	23	47,506.10	260,064.00	22.8	31.4	2777	
4,971,466	1.46	---	---	---	04/07/2007	08/10/2003	---	PAIRIS SA (CR)	0.185	---	↘	0.185	20/11/2018	---	---	---	---	700@0.168	---	---	---	---	---	---	---	---	919.72	0.085	0.446	2723
7,070,400	0.930	---	---	---	30/11/2016	06/05/2016	---	PETROPOULOS PETROS (CR)	6.6	---	↘	6.6	20/11/2018	6.54	6.54	6.6	6.6	6.581	100@6.50	980@6.60	---	---	520	5	3,422.10	46,664.64	5.02	6.68	2753	
27,379,200	0.300 (0.1808)	---	---	0.148	20/07/2018	24/08/2018	---	CRETE PLASTICS SA (CR)	12.4	---	↘	12.4	20/11/2018	---	---	---	---	10@11.40	20@12.00	---	---	---	---	---	---	339,502.08	9.05	15.2	1357	
21,912,599	0.300	---	---	---	11/04/2011	23/02/2007	---	REVOIL (CR)	0.424	---	↘	0.424	20/11/2018	---	---	---	---	500@0.400	370@0.440	---	---	---	---	---	---	9,290.94	0.384	0.69	5379	
4,181,450	0.500	---	---	---	21/08/2000	05/03/2002	---	FLOUR MILLS SARANTOPOULOS SA	0.57	---	↘	0.57	20/11/2018	---	---	---	---	500@0.515	664@0.625	---	---	---	---	---	---	2,383.43	0.52	0.7	3577	
28,438,268	0.300	---	---	---	21/08/2006	24/11/1999	---	SPIROY AGRICULTURE SA (CR)	0.236	---	↘	0.236	20/11/2018	---	---	---	---	---	---	100@0.230	---	---	---	---	---	6,711.43	0.159	0.384	1357	

Exchange Traded Funds (ETFs)

642,382	---	---	---	---	15/06/2016	---	ALPHA ETF FTSE Athex Large Cap	15.58	-0.33	€ 15.63	20/11/2018	15.58	15.58	15.58	15.58	15.58	---	---	---	---	780	2	12,152.40	---	11.532	22.9	12003
---------	-----	-----	-----	-----	------------	-----	--------------------------------	-------	-------	---------	------------	-------	-------	-------	-------	-------	-----	-----	-----	-----	-----	---	-----------	-----	--------	------	-------

Surveillance

5,867,311	0.300	---	---	---	11/08/2010	28/04/2017	5123	DIONIC (CR)	0.75	---	0.75	20/11/2018	---	---	---	---	---	592@0.600	---	---	---	---	---	4,400.48	0.179	0.935	2797	
163,854,177	0.300	---	---	---	19/09/2016		5161	Forthnet (CR)	0.246	---	0.246	20/11/2018	---	---	---	---	---	5800@0.197	---	---	---	---	---	40,308.13	0.0915	0.446	9535	
355,437,751	0.360	---	---	---	07/07/2010	21/09/2017	5160	FRIGOGLASS SA (CR)	0.142	3.65	# 0.137	20/11/2018	0.132	0.132	0.15	0.142	0.139	1250@0.141	4384@0.142	---	2016	10,136	13	1,405.75	50,472.16	0.132	0.266	2757
51,081,030	1.00	---	---	---	20/08/2007	03/09/2007	4912	LAVIPHARM SA (CR)	0.143	19.17	# 0.12	20/11/2018	0.12	0.12	0.143	0.143	0.125	1900@0.113	3738@0.142	---	---	4,875	6	607.43	7,304.59	0.12	0.25	4577
4,419,616	1.58	---	---	---	21/07/2011	04/03/2015	4983	MEDICON S.A (CR)	1.15	---	1.15	20/11/2018	---	---	---	---	---	900@1.13	100@1.20	---	---	---	---	---	5,082.56	0.66	1.5	4535
14,967,940	0.500	---	---	---	21/05/2008	04/01/2008	4956	PASAL DEVELOPMENT S.A. (CR)	0.09	---	0.09	20/11/2018	---	---	---	---	---	11000@0.074	2000@0.108	---	---	---	---	---	1,347.11	0.06	0.142	8633
65,326,268	0.530	---	---	---	04/07/2007	19/07/2006	4750	SATO SA (CR)	0.03	---	0.03	20/11/2018	---	---	---	---	---	4000@0.024	---	---	---	---	---	---	1,959.79	0.024	0.082	3726
13,191,620	0.620	---	---	---	04/08/2010	09/09/2002	---	YALCO - CONSTANTINOU SA (CB)	0.178	---	0.178	20/11/2018	---	---	---	---	---	2203@0.143	---	---	---	---	---	---	2,348.11	0.0565	0.181	3722
33,301,715	0.320	---	---	---	27/06/2003	08/07/2009	5195	AEGEK (CR)	0.0245	-18.33	€ 0.03	20/11/2018	0.024	0.024	0.025	0.025	0.024	179@0.026	500@0.027	---	---	15,561	11	379.03	815.89	0.024	0.09	2357

Number of Outstanding Securities	Nominal Value	Dividends [1]			Date of Last Coupon		Note	Shares	Closing price	% change	Previous closing price/date	Open price	Price min	Price max	Last price	Avg price	Last Bid [7]	Last Ask [7]	P/E after	Year	Volume	Trades	Transactions Value[8]	Company Mkt Value (thou. €)	Year low	Year high	Sector[4]		
		2015	2016	2017	Dividend [2]	Right																							
13,000,000	1.00	---	---	---	01/08/2007	07/04/2000	5093	AKRITAS SA (CR)	0.278	---	0.278	20/11/2018	0.23	0.23	0.24	0.24	0.238	163@0.240	172@0.332	---	---	240	4	57.20	3,614.00	0.12	0.52	2353	
185,373,016	0.300	---	---	---	02/07/2008	28/02/2011	4957	ANEK LINES SA (CR)	0.0455	19.74	#	0.038	20/11/2018	0.038	0.038	0.0455	0.0455	0.045	350@0.041	6490@0.046	---	---	12,832	11	577.61	8,681.87	0.0345	0.1	5759
312,163	0.300	---	---	---	02/07/2008	28/02/2011	4959	ANEK LINES SA (PR, issue '90)	0.06	---	0.06	20/11/2018	---	---	---	---	---	---	27@0.048	---	---	---	---	---	8,681.87	0.06	0.092	5759	
2,969,713	0.300	---	---	---	02/07/2008	28/02/2011	4958	ANEK LINES SA (PR, issue '96)	0.077	---	0.077	20/11/2018	---	---	---	---	---	---	110@0.062	---	---	---	---	---	8,681.87	0.062	0.125	5759	
4,737,503	0.320	---	---	---	22/06/2005	22/09/2015	5115	VARANGIS AVEPE S.A. (CR)	0.048	---	0.048	20/11/2018	---	---	---	---	---	---	---	---	---	---	---	---	227.40	0.034	0.17	3726	
1,638,344	0.300	---	---	---	25/06/2002	09/10/2018	5162	VARVARESSOS SA (CB)	0.436	---	0.436	20/11/2018	---	---	---	---	---	---	147@0.350	---	2017	---	---	---	714.32	0.225	1.08	3763	
17,579,754	4.16	---	---	---	18/08/2006	02/08/2010	5156	BIOTER SA (CR)	0.092	---	0.092	20/11/2018	0.1	0.1	0.1	0.1	0.1	10000@0.090	39130@0.100	---	---	244	2	24.40	1,617.34	0.05	0.144	2357	
77,126,446	0.340	---	---	---	23/05/2005	18/08/2011	5094	G.E. DIMITRIOU (CR)	0.014	---	0.014	20/11/2018	0.0135	0.0135	0.0135	0.0135	0.014	9000@0.012	13500@0.014	---	---	1,500	1	20.25	1,079.77	0.01	0.033	3722	
15,878,748	0.480	---	---	---	10/07/2006	22/03/2004	5095	DOMIKI KRITIS SA (CR)	0.0605	---	0.061	20/11/2018	---	---	---	---	---	3000@0.050	4484@0.073	---	---	---	---	---	960.66	0.0485	0.183	2357	
3,961,300	1.28	---	---	---	29/06/2004	03/08/2000	5080	DUROS SA (CR)	0.236	---	0.236	20/11/2018	---	---	---	---	---	---	20@0.189	---	2017	---	---	---	934.87	0.12	0.3	3763	
7,085,888	1.59	---	---	---	02/07/1996	06/09/2010	4690	ELVIEMEK (CR)	4.7	---	4.7	20/11/2018	---	---	---	---	---	---	---	---	---	---	---	---	33,303.67	4.7	4.7	8633	
51,830,520	0.300	---	---	---	23/12/2003	24/01/2007	5197	SELECTED TEXT. IND. ASSOC (CR)	0.1	17.65	#	0.085	20/11/2018	0.1	0.1	0.1	0.1	0.1	50@0.090	2500@0.100	---	2016	14,500	6	1,450.00	5,183.05	0.083	0.276	3763
11,125,110	0.300	---	---	---	02/06/2010	06/11/2017	5178	EUROCONSULTANTS S.A. (CR)	0.198	---	0.198	20/11/2018	---	---	---	---	---	---	2500@0.190	---	---	---	---	---	2,202.77	0.12	0.535	2791	
7,125,216	0.650	---	---	---	01/07/2005	14/12/1999	4955	KRE.KA SA (CR)	0.034	---	0.034	20/11/2018	0.034	0.034	0.034	0.034	0.034	2000@0.035	---	---	2017	46	1	1.56	242.26	0.031	0.338	3573	
7,734,375	1.00	---	---	---	09/07/2007	07/01/2011	5112	LIVANIS SA (CR)	0.0455	---	0.046	20/11/2018	---	---	---	---	---	---	3791@0.040	---	---	---	---	---	351.91	0.0165	0.122	5557	
15,842,391	1.51	---	---	---	15/07/2009	12/05/2000	5141	BITROS HOLDING SA (CR)	0.17	0.59	#	0.169	20/11/2018	0.17	0.17	0.17	0.17	0.17	900@0.140	4140@0.170	---	---	3,200	6	544.00	2,693.21	0.096	0.224	1757
119,596,817	0.300	---	---	---	15/07/2008	27/04/2017	5190	NIKAS SA (CR)	0.35	---	0.35	20/11/2018	---	---	---	---	---	387@0.340	1500@0.360	---	---	---	---	---	41,858.89	0.28	0.5	3577	
24,319,250	0.300	---	---	---	09/07/2002	04/07/2007	5165	PROODEFTIKH SA (CR)	0.13	---	0.13	20/11/2018	0.135	0.135	0.135	0.135	0.135	600@0.104	3535@0.135	---	---	600	4	81.00	3,161.50	0.047	0.139	2357	
10,186,667	1.35	---	---	---	24/06/2008	02/02/2016	4887	SIDMA SA (CR)	0.36	---	0.36	20/11/2018	---	---	---	---	---	---	2412@0.360	---	---	---	---	---	3,667.20	0.232	0.46	1757	
23,743,440	0.300	---	---	---	23/06/2008	24/07/2018	---	SFAKIANAKIS SA (CR)	0.38	---	0.38	20/11/2018	---	---	---	---	---	---	30@0.450	---	---	---	---	---	9,022.51	0.250	0.6304	5379	
766,000	1.00	---	---	---	01/07/2004	11/12/2012	5193	TRIA ALFA SA (CR)	2.2	---	2.2	20/11/2018	---	---	---	---	---	---	184@2.42	---	2017	---	---	---	1,846.90	1.71	2.48	3763	
245,000	1.00	---	---	---	19/07/2010	11/12/2012	5194	TRIA ALFA SA (PR)	0.66	---	0.66	20/11/2018	---	---	---	---	---	500@0.550	---	---	2017	---	---	---	1,846.90	0.53	0.66	3763	

Suspension Status

215,246,452	0.300	---	---	---	25/06/2001	24/09/2001	5164	ALTEC SA (CR)	0.012	---	0.012	30/11/2015	---	---	---	---	---	---	---	---	---	---	---	---	2,582.96	0.012	0.012	9533
20,255,805	0.300	---	---	---	22/08/2006	02/08/2010	5136	AXON HOLDING SA (CR)	0.058	---	0.058	28/04/2017	---	---	---	---	---	---	---	---	---	---	---	---	1,174.84	0.058	0.058	4533
21,820,410	0.800	---	---	---	22/05/2008	02/08/2011	5174	EUROMEDICA SA (CR)	0.448	---	0.448	30/04/2018	---	---	---	---	---	---	---	---	---	---	---	---	9,775.54	0.0825	0.45	4533
66,948,210	0.300	---	---	---	22/09/2015	22/09/2015	5179	FOLLI FOLLIE (CR)	4.8	---	4.8	24/05/2018	---	---	---	---	---	---	---	---	---	---	---	---	321,351.41	4.8	19.9	5379
2,235,600	0.350	---	---	---	21/04/2010	25/07/2017	5180	AEOLIAN INVESTMENT FUND (CR)	0.41	---	0.41	19/07/2018	---	---	---	---	---	---	---	---	---	---	---	---	916.60	0.352	0.65	8985
5,000,000	0.400	---	---	---	03/06/2009	01/09/2014	5087	ALCO HELLAS SA (CR)	0.18	---	0.18	31/03/2015	---	---	---	---	---	---	---	---	---	---	---	---	900.00	0.18	0.18	1753
14,870,100	0.300	---	---	---	15/05/2008	26/09/2011	5130	ALPHA GRISSIN S.A. (CR)	0.014	---	0.014	13/04/2017	---	---	---	---	---	---	---	---	---	---	---	---	208.18	0.014	0.014	9533
81,644,555	0.300	---	---	---	01/07/2008	02/09/2002	5098	ATTI - KAT SA (CR)	0.012	---	0.012	29/05/2015	---	---	---	---	---	---	---	---	---	---	---	---	979.73	0.012	0.012	2357
20,121,710	1.21	---	---	---	27/07/1992	12/03/2003	5002	BALKAN R.E. (CR)	0.19	---	0.19	29/08/2013	---	---	---	---	---	---	---	---	---	---	---	---	3,823.12	0.19	0.19	8633
33,930,000	0.300	---	---	---	03/07/2006	30/05/2001	4865	BABIS VOVOS SA (CR)	0.304	---	0.304	30/03/2012	---	---	---	---	---	---	---	---	---	---	---	---	10,314.72	0.304	0.304	8633
6,000,000	0.600	---	---	---	13/06/2008	08/04/2004	5172	EUROBROKERS S.A. (CR)	0.008	---	0.008	27/04/2018	---	---	---	---	---	---	---	---	---	---	---	---	48.00	0.007	0.008	8534
7,847,611	1.20	---	---	---	01/08/2007	28/09/2011	4939	EDRASIS - C. PSALLIDAS SA (CR)	0.15	---	0.15	29/11/2012	---	---	---	---	---	---	---	---	---	---	---	---	1,177.14	0.15	0.15	2357
36,748,909	0.730	---	---	---	15/12/2005	13/12/2006	5109	HEL. SUGAR INDUSTRY SA (CB)	0.075	---	0.075	29/02/2016	---	---	---	---	---	---	---	---	---	---	---	---	2,756.17	0.075	0.075	3577
30,390,000	0.310	---	---	---	18/08/2008	29/12/2006	5099	HELLENIC FISHFARMING SA (CR)	0.07	---	0.07	02/06/2015	---	---	---	---	---	---	---	---	---	---	---	---	2,127.30	0.07	0.07	3573
24,619,524	0.500	---	---	---	10/10/1986	30/12/2002	4914	KERAMIA-ALLATINI (CR)	0.088	---	0.088	30/08/2012	---	---	---	---	---	---	---	---	---	---	---	---	2,166.52	0.088	0.088	8633

Number of Outstanding Securities	Nominal Value	Dividends [1]			Date of Last Coupon		Note	Shares	Closing price	% change	Previous closing price/date		Open price	Price min	Price max	Last price	Avg price	Last Bid [7]	Last Ask [7]	P/E after	Year	Volume	Trades	Transactions Value[8]	Company Mkt Value (thou. €)	Year low	Year high	Sector[4]
		2015	2016	2017	Dividend [2]	Right																						
66,937,526	0.700	---	---	---	13/08/2010	21/05/2003	5003	MICHANIKI SA (CR)	0.1	---	↘	0.1	29/08/2013	---	---	---	---	---	---	---	---	---	---	---	9,186.78	0.1	0.1	2357
25,968,987	0.700	---	---	---	13/08/2010	21/05/2003	5004	MICHANIKI SA (PR)	0.096	---	↘	0.096	29/08/2013	---	---	---	---	---	---	---	---	---	---	---	9,186.78	0.096	0.096	2357
25,179,640	0.600	---	---	---	08/08/1994	19/09/2000	5191	J.BOUTARIS & SON HOLD. SA (CB)	0.026	---	↘	0.026	01/10/2018	---	---	---	---	---	---	---	---	---	---	---	742.45	0.024	0.066	3535
1,540,000	0.600	---	---	---	08/08/1994	19/09/2000	5192	J.BOUTARIS & SON HOLD. (PB)	0.057	---	↘	0.057	01/10/2018	---	---	---	---	---	---	---	---	---	---	---	742.45	0.057	0.09	3535
23,935,280	0.300	---	---	---	29/06/2009	13/06/2000	5153	NAYTEMPORIKI PUBLISHING SA(CR)	0.107	---	↘	0.107	02/10/2017	---	---	---	---	---	---	---	---	---	---	---	2,561.07	0.107	0.107	5557
255,459,600	0.300	---	---	---	26/06/2000	03/12/2010	5101	NEL SA (CR)	0.07	---	↘	0.07	31/08/2015	---	---	---	---	---	---	---	---	---	---	---	17,882.17	0.07	0.07	5759
23,463,874	0.800	---	---	---	23/05/2003	21/12/1999	4918	NEORION SA (CR)	0.125	---	↘	0.125	30/08/2012	---	---	---	---	---	---	---	---	---	---	---	2,932.98	0.125	0.125	2753
18,750,000	0.300	---	---	---	02/07/2001	31/12/2012	5154	PEGASUS PUBLISHING S.A. (CR)	0.089	---	↘	0.089	02/10/2017	---	---	---	---	---	---	---	---	---	---	---	1,668.75	0.089	0.089	5557
144,688,060	0.600	---	---	---	21/04/2008	10/03/2010	4982	T BANK (CR)	0.048	---	↘	0.052	# 29/11/2011	---	---	---	---	---	---	---	---	---	---	---	6,945.03	0.048	0.048	8355
284,465,964	3.70	---	---	---	20/06/2008	15/06/2009	4913	TT HELLENIC POSTBANK (CR)	0.168	---	↘	0.239	# 29/08/2012	---	---	---	---	---	---	---	---	---	---	---	47,790.28	0.168	0.168	8355
13,920,000	0.320	---	---	---	19/11/2001	01/08/2000	4726	TEXAPRET SA (CR)	0.08	---	↘	0.08	28/02/2011	---	---	---	---	---	---	---	---	---	---	---	1,113.60	0.08	0.08	3763
100,793,572	0.300	---	---	---	16/07/2009	11/02/2016	5110	TELETIPOS SA (CR)	0.06	---	↘	0.06	07/03/2016	---	---	---	---	---	---	---	---	---	---	---	6,047.61	0.06	0.06	5553
510,840	1.00	---	---	---	15/07/2008	21/11/2013	5036	TROPEA HOLDING (CR)	2	---	↘	0.02	# 30/03/2012	---	---	---	---	---	---	---	---	---	---	---	1,021.68	2	2	3722
4,034,950	0.680	---	---	---	01/07/2005	30/12/2010	5171	CHATZIKRANIOTIS & SONS SA (CR)	0.14	---	↘	0.14	27/04/2018	---	---	---	---	---	---	---	---	---	---	---	564.89	0.102	0.18	3577

Shares' Notes

Code	Note text
()	- Adjusted dividends.
*	- Last adjusted closing price.
[1]	- Net dividends.
[2]	- The "Date of Last Coupon" for New listings refers to the date company's stocks started to trade in Athex
[3]	- The Company Market Value is referred to the number of outstanding shares
[4]	- Sectors codification can be found in Appendix A
[5]	- The Market Value refers to the total number of shares listed (including their several classes) in the exchange by the company.
[6]	- P/E greater than 100
[7]	- Last view of the Order Book before the end of the trading session
[8]	- All Blocks Methods' Transactions Value are included.
4690	- Transfer to Surveillance category as of 4/4/2006.
4726	- Suspension of trading as of 1/3/2011.
4750	- Transfer to the "Under Surveillance Category" from 8/4/2011.
4865	- Suspension of trading as of 2/4/2012.
4887	- Transfer to the Surveillance Category as of 10/4/2012.
4912	- Transfer to the Surveillance Category as of 31/7/2012.
4913	- Suspension of trading as of 30/8/2012.
4914	- Suspension of trading as of 31/8/2012.
4918	- Suspension of trading as of 31/8/2012.
4939	- Suspension of trading as of 30/11/2012.
4955	- Transfer to the Surveillance Category as from 5/4/2013.
4956	- Transfer to the Surveillance Category as from 5/4/2013.
4957	- Transfer to the Surveillance Category as from 5/4/2013.
4958	- Transfer to the Surveillance Category as from 5/4/2013.
4959	- Transfer to the Surveillance Category as from 5/4/2013.
4982	- Suspension of trading as of 30/11/2011.
4983	- Transfer to the Surveillance Category as of 5/4/2013.
5002	- Suspension of trading as of 30/08/2013.
5003	- Suspension of trading as of 30/08/2013.
5004	- Suspension of trading as of 30/08/2013.
5036	- The company's share is under suspension of trading as of 2/4/2012. During suspension, the company proceeded and concluded a share reverse split, according to which - after the conclusion of the corporate action - the total number of the company's shares, as well as, the last closing price of 30/03/2012 were adjusted.
5080	- Transfer to the Surveillance Category as of 05/12/2014.
5087	- Suspension of trading as of 1/4/2015.
5093	- Transfer to the Surveillance Category as of 8/4/2015.
5094	- Transfer to the Surveillance Category as of 8/4/2015.
5095	- Transfer to the Surveillance Category as from 9/4/2015.
5098	- Suspension of trading as of 2/6/2015.
5099	- Suspension of trading as of 3/6/2015.
5101	- Suspension of trading as of 1/9/2015.
5109	- Suspension of trading as of 01/03/2016.
5110	- Suspension of trading as of 08/03/2016.
5112	- Transfer to the Surveillance Category as of 15/04/2016.
5115	- Transfer to the Surveillance Category as of 15/04/2016.
5123	- Transfer to the Surveillance Category as of 01/04/2016.
5130	- Suspension of trading as of 18/04/2017.
5136	- Suspension of trading as of 02/05/2017.
5141	- Transfer to the Surveillance Category as of 10/05/2017.
5153	- Suspension of trading as of 03/10/2017.
5154	- Suspension of trading as of 03/10/2017.
5156	- Transfer to the Surveillance Category as of 11/12/2017.
5160	- Transfer to the Surveillance Category as of 15/04/2016.

Shares' Notes

Code	Note text
5161	- Transfer to the Surveillance Category as of 25/11/2011.
5162	- Transfer to the Under Supervision Category as of 21/12/2009.
5164	- Suspension of trading as of 01/12/2015.
5165	- Transfer to the Surveillance Category as of 15/02/2018.
5171	- Suspension of trading as of 30/04/2018.
5172	- Suspension of trading as of 30/04/2018.
5174	- Suspension of trading as of 02/05/2018.
5178	- Transfer to the Surveillance Category as of 11/05/2018.
5179	- Suspension of trading as of 25/05/2018.
5180	- Transfer to the Surveillance Category as of 29/05/2018.
5190	- Transfer to the Surveillance Category as of 01/10/2018.
5191	- Suspension of trading as of 02/10/2018.
5192	- Suspension of trading as of 02/10/2018.
5193	- Transfer to the Surveillance Category as of 25/10/2018.
5194	- Transfer to the Surveillance Category as of 25/10/2018.
5195	- Transfer to the Surveillance Category as of 01/12/2017.
5197	- Transfer to the Surveillance Category as of 07/11/2018.

Securities Blocks Details

Securities	Block Volume	Price	Block Trade Value	Time of approval	Note
OPAP (CR)	10	8.33	83.30	10:34:02	14
ALPHA BANK (CR)	1,000,000	1.08	1,084,000.00	11:32:32	20
EUROBANK ERGASIAS (CR)	950,000	0.455	432,250.00	12:18:03	20
OTE (CR)	67,800	10.00	678,000.00	16:22:49	20
JUMBO SA (CR)	50,000	12.47	623,500.00	16:37:55	20
NATIONAL BANK (CR)	500,000	1.01	504,500.00	17:18:01	20
EUROBANK ERGASIAS (CR)	2,000,000	0.444	888,800.00	17:18:05	20

Blocks Notes

9 - Method 6-1 / Special Fees

10 - Method 6-1 / Special Fees, SDS

14 - Method 6-3 / Settlement, Incomplete Buy and Sell

18 - Method 6-2 / SPOT 1

19 - Method 6-2 / SPOT 2

20 - Method 6-1 and Method 6-1 Same Day Settlement

21 - Other Pre-agreed

Shares Rights Details

Occured date	Exercise from	Exercise until	Trading until	Rights	Price min	Price max	Closing price	Last Bid	Last Ask	Volume	Trades	Transactions Value
-----------------	------------------	-------------------	------------------	--------	--------------	--------------	------------------	----------	----------	--------	--------	-----------------------

No Rights Transactions.

Securities Forced Sales

Securities	Category of Security	Transaction s Volume	Number of Trades	Transactions Value	Note
No Forced Transactions.					

Forced Sales Notes

- 1 - Normal Forced Sale.
- 2 - Forced Sales of Fixed Registered Shares.
- 3 - Forced Sales of Remaining Stock Fractions.

Forced Sales Registered Shares

Securities	Start Date	End Date	Initial Volume	Remaining Volume	Date	Avg price (day)	Avg price (period)	Number of Trades	Transactions Volume	Transactions Value
------------	------------	----------	----------------	------------------	------	-----------------	--------------------	------------------	---------------------	--------------------

No Fixed Registered Shares Forced Sales.

Forced Sales Notes

According to Decision 1/380/04.05.2008 of the Hellenic Republic Capital Market Commission, the certificated registered shares that have not been deposited to the issuer for dematerialisation, will be auctioned in the Athens Exchange by the supervising issuer. Forced sales procedure is held according to Article 99A of the Athens Exchange Rulebook. The average price of the period is calculated by dividing the Total transactions value by the Total volume and includes all the transactions made until the current date.

Exchange Traded Funds (ETFs) Characteristics

	Transactions Date (T)	Creation / Redemption	Units (T-1)	New Units (T-1)	Redemptio n Units (T-	Units (T) [1]	Fund Assets [2]	Net Unit Price	Dividen d per	Dividend Date
ALPHA ETF FTSE Athex Large Cap	21/11/2018	5,000	629,082	13,300	---	642,382	9,942,006.00	15.4768	0.43	30/06/2018

ETFs Notes

[1] - Units (T) = Units (T-1) + New Units (T-1) - Redemption Units (T-1)

[2] - The Creation / Redemption Units of T-1 are included.

Convertible Corporate Bonds - Regulated Market

Num Listed Bonds	Nominal price	Issue price	Today's Rate	Exp. Date	Duration (years)	Note	Coupon		Trading	Corporate Bonds	Price min	Price max	Closing price	Previous closing price/date	Volume	Transactions Value	Last order		Date	ear min	Year max
							Common	Preferred									Price	Buy / Sell			
179,991,941	0.30	0.30	1.00	11/10/2025	9	---	9	---	1	FORTHNET S.A. (Convertible)	---	---	---	---	---	---	1.0610	B	21/11/2018	100.0000	100.0000

Corporate Bonds Notes

Transactions Volume = (Pieces) * (Nominal Price). Transactions Value = (Pieces) * (Nominal Price) * (price %) + (Accrued interest).
The price of a Bond is stated as a percentage (%) of Bond's Nominal Price.
Nominal Price in Euros (€), except if it is noted differently.

Non Convertible Corporate Bonds - Regulated Market

Num Listed Bonds	Nominal price	Issue price	Today's Rate	Exp. Date	Duration (years)	Note	Coupon		Trading	Corporate Bonds	Accrued Int.	Yield.T.Mat	Price min	Price max	Closing price	Previous closing price/date	Volume	Transactions Value	Last order		Date	ear min	Year max	
							Common	Preferred											Price	Buy / Sell				
25,000	1,000.00	1,000.00	4.95	26/06/2023	5	---	1	---	1	B&F COMM. & GARM. INDUS. S.A. (Non Convertible)	20.6250	6.5240	93.9000	93.9000	93.9000	94.3000	19/11/2018	2,000	1,918.98	93.4101	B	21/11/2018	93.9000	100.0000
90,000	1,000.00	1,000.00	3.00	11/05/2023	5	---	2	---	1	CORAL A.E. (Non Convertible)	0.9167	2.8790	100.3000	100.3000	100.3000	100.4760	20/11/2018	2,000	2,007.83	100.3000	B	21/11/2018	100.0000	101.3500
120,000	1,000.00	1,000.00	3.95	04/04/2025	7	---	2	---	1	GEK TERNA S.A. (Non Convertible)	5.4861	3.9940	99.2000	99.3000	99.2529	99.4080	20/11/2018	24,000	23,952.37	97.6510	B	21/11/2018	98.8955	102.9900
60,000	1,000.00	1,000.00	3.85	21/07/2022	5	---	3	---	1	TERNA ENERGY FINANCE S.A. (Non Convertible)	13.1542	3.5260	100.2000	100.5000	100.4590	100.4000	20/11/2018	153,000	155,714.79	100.2500	B	21/11/2018	99.3154	103.4900
300,000	1,000.00	1,000.00	3.10	27/06/2022	5	---	3	---	1	MYTILINEOS HOLDINGS S.A. (Non Convertible)	12.8306	2.8880	100.1500	100.3000	100.2800	100.6890	20/11/2018	90,000	91,383.65	100.2800	B	21/11/2018	100.2800	103.4800
50,000	1,000.00	1,000.00	4.25	20/06/2022	5	---	3	---	1	SYSTEMS SUNLIGHT S.A. (Non Convertible)	18.2986	4.5460	98.2000	98.2100	98.2100	99.1400	20/11/2018	16,000	16,004.88	98.2010	B	21/11/2018	98.0000	103.2000
200,000	1,000.00	1,000.00	3.50	21/03/2022	5	---	4	---	1	O.P.A.P. S.A. (Non Convertible)	6.1250	2.7240	101.5600	101.9000	101.9000	101.3000	20/11/2018	62,000	63,511.35	101.5600	B	21/11/2018	101.3000	103.1500
40,000,000	1.00	1.00	5.00	04/10/2021	5	---	9	---	1	HOUSEMARKET S.A. (Non Convertible)	0.0069	4.0210	101.4200	101.4200	101.4200	101.4120	20/11/2018	5,000	5,105.72	101.2500	B	21/11/2018	98.9369	105.1000

Corporate Bonds Notes

Transactions Volume = (Pieces) * (Nominal Price). Transactions Value = (Pieces) * (Nominal Price) * (price %) + (Accrued interest).
The price of a Bond is stated as a percentage (%) of Bond's Nominal Price.
Nominal Price in Euros (€), except if it is noted differently.

Government Bonds

Number Listed Bonds	Nominal price	Today's Rate	Accrued Interest Calc	Exp. Date [1]	Duration (years)	Note	Coupons Date	Curr. coupon value	Trading Unit	Government Bonds	Price min	Price max	Closing price	Previous closing price/date	Volume	Transactions Value	Price	Last order Buy / Sell	Date
3,000,000	1,000.00	4.38	Actual/Actual	01/08/2022	5	---	01/08	4.38	1	GGB-FXD-010822-05Y-4.375-1.000	---	---	---	---	---	---	1.0000	B	21/11/2018
4,355,990,324	1.00	3.50	Actual/Actual	30/01/2023	5	---	01/02 - 31/01	3.50	1	GGB-FXD-300123-05Y-3.500-1.00	---	---	---	94.5720 13/07/2018	---	---	1.0000	B	21/11/2018
5,962,747,327	1.00	3.75	Actual/Actual	30/01/2028	10	---	/02 - 01/02 - 31/	3.75	1	GGB-FXD-300128-10Y-3.750-1.00	---	---	---	85.4610 13/07/2018	---	---	1.0000	B	21/11/2018
6,091,218,404	1.00	3.90	Actual/Actual	30/01/2033	15	---	/02 - 01/02 - 31/	3.90	1	GGB-FXD-300133-15Y-3.900-1.00	---	---	---	78.6730 13/07/2018	---	---	1.0000	B	21/11/2018
4,805,399,486	1.00	4.00	Actual/Actual	30/01/2037	19	---	/02 - 01/02 - 31/	4.00	1	GGB-FXD-300137-19Y-4.000-1.00	---	---	---	77.0370 13/07/2018	---	---	1.0000	B	21/11/2018
4,603,713,186	1.00	4.20	Actual/Actual	30/01/2042	24	---	/02 - 01/02 - 31/	4.20	1	GGB-FXD-300142-24Y-4.200-1.00	---	---	---	77.7640 13/07/2018	---	---	1.0000	B	21/11/2018
550,418,123	1.00	3.00	Actual/Actual	24/02/2023	11	---	24/02	3.00	1	GGB-FXD-240223-11Y-2.000-1.00	---	---	---	10.0000 22/06/2015	---	---	---	---	---
445,007,576	1.00	3.00	Actual/Actual	24/02/2024	12	---	24/02	3.00	1	GGB-FXD-240224-12Y-2.000-1.00	---	---	---	10.0000 22/06/2015	---	---	---	---	---
423,674,226	1.00	3.00	Actual/Actual	24/02/2025	13	---	24/02	3.00	1	GGB-FXD-240225-13Y-2.000-1.00	---	---	---	10.0000 22/06/2015	---	---	---	---	---
212,292,153	1.00	3.00	Actual/Actual	24/02/2026	14	---	24/02	3.00	1	GGB-FXD-240226-14Y-2.000-1.00	---	---	---	10.0000 22/06/2015	---	---	---	---	---
160,621,352	1.00	3.00	Actual/Actual	24/02/2027	15	---	24/02	3.00	1	GGB-FXD-240227-15Y-2.000-1.00	---	---	---	10.0000 22/06/2015	---	---	---	---	---
183,244,055	1.00	3.00	Actual/Actual	24/02/2028	16	---	24/02	3.00	1	GGB-FXD-240228-16Y-2.000-1.00	---	---	---	10.0000 22/06/2015	---	---	---	---	---
164,802,894	1.00	3.00	Actual/Actual	24/02/2029	17	---	24/02	3.00	1	GGB-FXD-240229-17Y-2.000-1.00	---	---	---	10.0000 22/06/2015	---	---	---	---	---
165,460,943	1.00	3.00	Actual/Actual	24/02/2030	18	---	24/02	3.00	1	GGB-FXD-240230-18Y-2.000-1.00	---	---	---	10.0000 22/06/2015	---	---	---	---	---
129,007,241	1.00	3.00	Actual/Actual	24/02/2031	19	---	24/02	3.00	1	GGB-FXD-240231-19Y-2.000-1.00	---	---	---	10.0000 22/06/2015	---	---	---	---	---
126,192,683	1.00	3.00	Actual/Actual	24/02/2032	20	---	24/02	3.00	1	GGB-FXD-240232-20Y-2.000-1.00	---	---	---	10.0000 22/06/2015	---	---	---	---	---
146,905,168	1.00	3.00	Actual/Actual	24/02/2033	21	---	24/02	3.00	1	GGB-FXD-240233-21Y-2.000-1.00	---	---	---	10.0000 22/06/2015	---	---	---	---	---
154,475,606	1.00	3.00	Actual/Actual	24/02/2034	22	---	24/02	3.00	1	GGB-FXD-240234-22Y-2.000-1.00	---	---	---	10.0000 22/06/2015	---	---	---	---	---
144,429,441	1.00	3.00	Actual/Actual	24/02/2035	23	---	24/02	3.00	1	GGB-FXD-240235-23Y-2.000-1.00	---	---	---	10.0000 22/06/2015	---	---	---	---	---
166,211,676	1.00	3.00	Actual/Actual	24/02/2036	24	---	24/02	3.00	1	GGB-FXD-240236-24Y-2.000-1.00	---	---	---	10.0000 22/06/2015	---	---	---	---	---
145,461,669	1.00	3.00	Actual/Actual	24/02/2037	25	---	24/02	3.00	1	GGB-FXD-240237-25Y-2.000-1.00	---	---	---	10.0000 22/06/2015	---	---	---	---	---
146,941,087	1.00	3.00	Actual/Actual	24/02/2038	26	---	24/02	3.00	1	GGB-FXD-240238-26Y-2.000-1.00	---	---	---	10.0000 22/06/2015	---	---	---	---	---
135,115,612	1.00	3.00	Actual/Actual	24/02/2039	27	---	24/02	3.00	1	GGB-FXD-240239-27Y-2.000-1.00	---	---	---	10.0000 22/06/2015	---	---	---	---	---
141,909,637	1.00	3.00	Actual/Actual	24/02/2040	28	---	24/02	3.00	1	GGB-FXD-240240-28Y-2.000-1.00	---	---	---	10.0000 22/06/2015	---	---	---	---	---
136,788,720	1.00	3.00	Actual/Actual	24/02/2041	29	---	24/02	3.00	1	GGB-FXD-240241-29Y-2.000-1.00	---	---	---	10.0000 22/06/2015	---	---	---	---	---
163,643,410	1.00	3.00	Actual/Actual	24/02/2042	30	---	24/02	3.00	1	GGB-FXD-240242-30Y-2.000-1.00	---	---	---	10.0000 22/06/2015	---	---	---	---	---
742,153	1,000.00	0.93	FLR Actual/360	10/08/2019	5	---	10/02 - 10/08	---	1	GGB-FLT-100819-05Y-0.934-1.000	---	---	---	---	---	---	50.0001	B	12/12/2017
3,000,000	1,000.00	3.38	Actual/Actual	15/02/2025	7	---	15/02	3.38	1	GGB-FXD-150225-07Y-3.375-1.000	---	---	---	---	---	---	---	---	---
2,456,470	1,000.00	4.75	Actual/Actual	17/04/2019	5	---	17/04	4.75	1	GGB-FXD-170419-05Y-4.750-1.000	---	---	---	---	---	---	---	---	---

Government Bonds Notes

Transactions Volume = (Pieces) * (Nominal Price). Transactions Value = (Pieces) * (Nominal Price) * (price %) + (Accrued interest).
The Value of current coupon for the issues with NV 0.01 euro refers to NV 100 euros
FLR: Floating Interest Rate.
[1] - The Expiration Date of the interest bearing period and the Date for coupon payment.

Treasury Bills & Zero Coupon Government Bonds

Issue Date	13-Week Maturity									26-Week Maturity								52-Week Maturity									
	Exp. Date	Initial Rate	Num Listed Bonds	Nominal price	Issue price	Last Trade Price	Last Trade Date	Volume Traded	Note	Exp. Date	Initial Rate	Num Listed Bonds	Nominal price	Issue price	Last Trade Price	Last Trade Date	Volume Traded	Note	Exp. Date	Initial Rate	Num Listed Bonds	Nominal price	Issue price	Last Trade Price	Last Trade Date	Volume Traded	Note
16/03/2018	---	---	---	---	---	---	---	---	---	---	---	---	---	---	---	---	---	---	15/03/2019	1.25	1,000,000	1,000.00	987.52	---	---	---	---
15/06/2018	---	---	---	---	---	---	---	---	---	---	---	---	---	---	---	---	---	---	14/06/2019	1.09	1,000,000	1,000.00	989.10	---	---	---	---
14/09/2018	---	---	---	---	---	---	---	---	---	---	---	---	---	---	---	---	---	---	13/09/2019	1.09	1,000,000	1,000.00	989.10	---	---	---	---

Bonds in Circulation	Currency / Min nominal traded Value	Coupons Payment Date	Current Coupon Value	Note	Coupon	Trading Unit	Issue Date	Duration (years)	Today's Interest	A.I.C in days	Bonds	Last price of previous days		Last Outcry in Cash (euro) Price Buy / Sell Date			Trades in Pieces	Life min	Life Max
Corporate Bonds in Foreign Currency and Euro																			
103,746	GBP / 10	01/12	0.25	---	59	1	01/12/1930	98	2.5	360	National Mortgage Bank	2.27	05/02/1996	2.27	S	05/02/1996	---	2.27	2.27
0	GBP / 10	01/12	0.25	---	61	1	01/12/1928	100	2.5	360	National Mortgage Bank	---	---	---	---	---	---	---	---

Government Bonds Notes

A.I.C: Accrued Interest Calculation base.
FLR: Floating Interest Rate.
The minimum tradeable Nominal Value for all Demeterialised Government Titles is 100 Euros.
(μτφρ-0)

Athex & ATHEXClear Members List

Member Name			Stock Market			Derivatives Market		ATHEXClear Member	
Address	Phone	Fax	Market Member	Remote Member	Market Maker	Proprietary	Market Maker	General Clearing	Direct Clearing
A. SARRIS SECURITIES S.A.			a						
6, DRAGATSANIOU ATHINA	+30 2103367700	210-3312324							
ALPHA BANK A.E.								a	
40, STADIOU STR ATHINA	(210)-3260000 (210)-3265546	(210)-3264116 (210)-3265811							
103, AVE. ATHINON ATHINA	+30 2103436820	210-3436270							
ALPHA FINANCE INVESTMENT SERVICES S.A.			a		a	a	a		a
5, MERLIN ATHINA	+30 2103677400	210-3331193							
ARDU PRIME SECURITIES S.A			a			a			
12-14, KARAGIORGI SERVIAS ATHINA	+30 2103800820	210-3000854							
ARGUS STOCKBROKERS LTD			a	a		a			
25 , DIMOSTHENI SEVERI AVE NICOSIA	+357 22717000	0035722717070							
ATLANTIC SECURITIES LIMITED			a	a					
37, PRODROMOU NICOSIA	+357 22445400	00357 22661914							
AXIA VENTURES GROUP LTD			a	a					
, KRANIDIOTI 10, OFFICE 102 NICOSIA	+357 22742000	357 22742001							
AXON SECURITIES S.A.			a			a			
48, STADIOU ATHINA	+30 2103363800	210-3243903							
BANK OF AMERICA MERRILL LYNCH			a	a					
2 , KING EDWARD STREET LONDON	+44 20276281000								
BETA SECURITIES S.A.			a		a	a			a
29 , ALEXANDRAS AVEN. & VRAILA ATHINA	+30 2106478900	210-6410139							
BNP PARIBAS SECURITIES SERVICES								a	
2, LAMPSAKOU ATHINA	+30 2107468500	210-7468579-581							
CAPITAL SECURITIES S.A.			a			a			
58, MITROPOLEOS ATHINA	+30 2103369700	+30 210 3369820							
CFS SECURITIES-INVESTMENT SERVICES S.A.			a						
3, PAPARRIGOPOULOU ATHINA	+30 2103360800	+30 210-3360980							
CITIGROUP GLOBAL MARKET LTD			a	a					
1, CITIGROUP CENTER , CANADA SQ., CANARY WHARF LONDON	+44 02079864000								
CREDIT SUISSE SECURITIES (EUROPE) LIMITED			a	a					
1 , CABOT SQUARE LONDON	+44 2078888888								
CYCLOS SECURITIES S.A.			a			a			a
39, PANEPISTIMIOU ATHINA	+30 2103364300	+30 210-3239122							
DEUTSCHE BANK S.A.			a	a		a			
1 , GREAT WINCHESTER STREET LONDON	+44 20 754 54209	00441133361437							
DYNAMIC SECURITIES S.A.			a			a			a
8, OMIROU ATHINA	+30 2103677700	210-3677777							
EUROBANK EQUITIES INVESTMENT FIRM S.A			a		a	a	a		a
, FILELLINON 10 & XENOFONTOS 13 ATHINA	+30 2103720000	210-3720001							
EUROBANK ERGASIAS S.A.								a	
8, OTHONOS STR. ATHINA	(210)-3337969 (210)-3337000	(210)-3245916 (210)-3233866							
8, OTHONOS ATHINA	+30 2103337000	210-3245916							
EUROCORP INVESTMENT SERVICES S.A.			a			a			a
14, FILIKIS ETERIAS SQ, ATHINA	+30 2107263500	2107263666							
EUROTRUST INVESTMENT FIRM SA			a						
113, SEVASTOUPOLEOS ATHINA	+30 2103363100	+30 210-3238334							
EUROXX SECURITIES S.A.			a		a	a	a		a
7, PALAIOLOGOU CHALANDRI	(210)-6879400	(210)-6879401							
7, PALEOLOGOU CHALANDRI	+30 2106879400	210-6879401							
G. A. PERVANAS SECURITIES-INVESTMENT SERVICES CO S.A.			a						
7-9, SOFOKLEOUS ATHINA	+30 2103727200	210-3210-291							
GLOBAL CAPITAL SECURITIES AND FINANCIAL SERVICES LTD			a	a					
50, AVE. ARCHIEPISKOPOU MAKARIOU NICOSIA	+357 22710710	357 22339332							
HELLENIC BANK (INVESTMENTS) LTD				a					
, AVE.KYRIAKOU MATSI 31 - PO BOX 24747 NICOSIA	+357 22500100	357 22500110							
HELLENIC-AMERICAN SECURITIES S.A.			a		a	a			a
27, ANDREA PAPANDREOU ATHINA	+30 2103311100	+30 210-3215968							
HSBC FRANCE								a	
109-111, AVE. MESOGION ATHINA	+30 2106960000	210-6929336							
INDEX SECURITIES S.A.			a						
6, DRAGATSANIOU ATHINA	+30 2103213920	+30 210-3213216							

Athex & ATHEXClear Members List

Member Name			Stock Market			Derivatives Market		ATHEXClear Member	
Address	Phone	Fax	Market Member	Remote Member	Market Maker	Proprietary	Market Maker	General Clearing	Direct Clearing
INVESTMENT BANK OF GREECE S.A.			a		a	a	a	a	
32 , EGIALIAS & PARADISOU MAROUSI	+30 2108173111	+30 210-6896325							
J. CHR. MAVRIKIS SECURITIES S.A.			a						
5, SOFOKLEOUS ATHINA	+30 2103216730	210-3217767							
KAPPA SECURITIES S.A.			a			a			
15, VALAORITOU ATHINA	+30 2103678600	+30 210-3641002							
KARAMANOF SECURITIES AND INVESTMENT SERVICES S.A.			a			a			
2, SQ. AGION THEODORON ATHINA	+30 2103212947	+30 210-3217088							
LAIKI FINANCIAL SERVICES LTD				a					
26, AVE. VYRONOS NICOSIA	357 22367367	357 22718567							
LEON DEPOLAS SECURITIES S.A.			a		a	a			
1, CHRISTOU LADA ATHINA	+30 2103213276	+30 210-3211618							
MEGA EQUITY SECURITIES & FINANCIAL SERVICES PUBLIC LTD			a	a		a			
42-44, AVE. GRIVA DIGENI NICOSIA	+357 22711711	357 22711811							
MERIT SECURITIES S.A			a		a	a			a
5, SOFOKLEOUS ATHINA	+30 2141008800	210-6971830							
N. CHRYSOCHOIDIS STOCK BROKERAGE I.S.S.A.			a			a			a
7-9, SOFOKLEOUS ATHINA	+30 2103213913	+30 210-3216115							
NATIONAL BANK OF GREECE S.A.			a		a	a		a	
68, AKADIMIAS STR. ATHINA	(210)-3328817	(210)-3328678							
86, AIOLOU STR. ATHINA	(210)-3341000	(210)-3328187							
NATIONAL SECURITIES S.A			a		a	a	a		
66, KIFISIAS AVE , BUILDING A ATHINA	+30 2107720000	+30 210-7720002							
NUNTIUS BROKERAGE AND INVESTMENT SERVICES S.A			a						
6, DRAGATSANIOU ATHINA	+30 2103350599	+30210-3254846							
ONE PLUS CAPITAL LIMITED			a	a					
, 75 PRODRAMOU AVENUE, ONEWORLD PARKVIEW HOUSE, 3RD FLOOR	+357 22873760								
PANTELAKIS SECURITIES S.A.			a		a	a	a		
57, ETHNIKIS ANTISTASIS B CHALANDRI	+30 2106965000	210-6929550							
PEGASUS SECURITIES S.A			a			a			
17 , VALAORITOU & AMERIKIS ATHINA	+30 2103670700	+30 210-3670760							
PIRAEUS BANK S.A.			a			a		a	
4, AMERIKIS STR ATHINA	(210)-3335918	(210)-3254207							
4, AMERIKIS STR. ATHINA	(210)-3335000	(210)-3335079							
4, AMERIKIS ATHINA	+30 2103335000	210-3335079							
PIRAEUS SECURITIES S.A.			a		a	a	a		a
10, STADIOU ATHINA	+30 2103354100	210-3354170							
PRELIUM INVESTMENT SERVICES S.A.			a			a			
342, KIFISIAS ATHINA	+30 2103677044	+30 210-6926403							
PROCHOICE SECURITIES LTD			a	a					
57, SPYROY KYPRIANOY NICOSIA	+357-24-661192	+357-24-662464							
SHARELINK SECURITIES-FINANCIAL SERVICES LTD			a	a		a			
6 , THEOTOKI MEGARO ELLINA NICOSIA	+357 22554200	+357 22750852							
SOCIETE GENERALE S.A.			a	a		a			
, 17 COURS VALMY 92987 PUTEAUX - LA DEFENSE PARIS	+33 157290504	+33142138697							
SOLIDUS SECURITIES S.A			a			a			a
64, LOUIZIS RIANCOUR ATHINA	+30 2106900600	210-6985421							
ST. EM. LAVRENTAKIS SECURITIES S.A.			a			a			
7-9, SOFOKLEOUS ATHINA	+30 2103213336	+30 210-3246572							
THE CYPRUS INVESTMENT & SECURITIES CORPORATION LTD			a	a					
154, LIMASSOL AVENUE, STROVOLOS NICOSIA	+357 22121700	357 22338800							
UBS LIMITED			a	a					
1 , FINSBURY AVENUE LONDON	+44 2075687135								

List of Stocks under Market Making operations

Securities	Stock Category
Market Maker	Start Market Making
FOLLI FOLLIE (CR)	Suspension Status
NATIONAL SECURITIES S.A.	17/02/2014
PIRAEUS SECURITIES S.A.	04/05/2015
ADMIE (IPTO) HOLDING S.A. (CR)	Main Market
PIRAEUS SECURITIES S.A.	29/06/2017
ALPHA BANK (CR)	Main Market
ALPHA FINANCE INVESTMENT SERVICES S.A.	29/02/2016
EUROBANK EQUITIES INVESTMENT FIRM S.A	24/10/2012
LEON DEPOLAS SECURITIES S.A.	04/01/2016
MERIT SECURITIES S.A	03/09/2013
NATIONAL SECURITIES S.A	15/01/2013
PIRAEUS SECURITIES S.A.	28/05/2013
ALUMIL (CR)	Main Market
BETA SECURITIES S.A.	18/07/2013
ATTICA BANK S.A. (CR)	Main Market
BETA SECURITIES S.A.	02/06/2014
EUROXX SECURITIES S.A.	22/01/2016
PIRAEUS SECURITIES S.A.	20/09/2017
ATTICA HOLDINGS (CR)	Main Market
HELLENIC-AMERICAN SECURITIES S.A.	28/12/2017
AUTOHELLAS SA (CR)	Main Market
EUROXX SECURITIES S.A.	02/07/2018
BYTE COMPUTER SA (CR)	Main Market
MERIT SECURITIES S.A	04/08/2013
CC HBC AG (CR)	Main Market
EUROBANK EQUITIES INVESTMENT FIRM S.A	23/10/2013
NATIONAL SECURITIES S.A	29/04/2013
PIRAEUS SECURITIES S.A.	04/05/2015
CENERGY HOLDINGS (CB)	Main Market
ALPHA FINANCE INVESTMENT SERVICES S.A.	02/01/2017
EUROBANK EQUITIES INVESTMENT FIRM S.A	02/01/2017
EKTER SA (CR)	Main Market
EUROBANK EQUITIES INVESTMENT FIRM S.A	16/10/2017
LEON DEPOLAS SECURITIES S.A.	21/05/2018
ELASTRON (CR)	Main Market
LEON DEPOLAS SECURITIES S.A.	20/02/2017
ELLAKTOR (CR)	Main Market
EUROBANK EQUITIES INVESTMENT FIRM S.A	01/06/2013
EUROXX SECURITIES S.A.	24/09/2018
NATIONAL SECURITIES S.A	25/06/2013
PIRAEUS SECURITIES S.A.	22/10/2018
ELTON SA (CR)	Main Market
BETA SECURITIES S.A.	03/09/2013
ELVALHALCOR (CB)	Main Market
ALPHA FINANCE INVESTMENT SERVICES S.A.	07/05/2018
EUROBANK EQUITIES INVESTMENT FIRM S.A	07/05/2018
EUROBANK ERGASIAS (CR)	Main Market
ALPHA FINANCE INVESTMENT SERVICES S.A.	08/01/2013
EUROBANK EQUITIES INVESTMENT FIRM S.A	01/06/2013
HELLENIC-AMERICAN SECURITIES S.A.	25/07/2014
MERIT SECURITIES S.A	06/11/2017
NATIONAL SECURITIES S.A	01/01/2017
PIRAEUS SECURITIES S.A.	28/09/2013
FOURLIS (CR)	Main Market
EUROBANK EQUITIES INVESTMENT FIRM S.A	01/12/2016
EUROXX SECURITIES S.A.	01/12/2016
PIRAEUS SECURITIES S.A.	06/03/2017
GEK TERNA (CR)	Main Market
HELLENIC-AMERICAN SECURITIES S.A.	07/09/2015
GR. SARANTIS S.A. (CR)	Main Market
ALPHA FINANCE INVESTMENT SERVICES S.A.	19/06/2018
BETA SECURITIES S.A.	14/05/2013
EUROBANK EQUITIES INVESTMENT FIRM S.A	24/10/2016
GRIVALIA PROPERTIES (CR)	Main Market
EUROBANK EQUITIES INVESTMENT FIRM S.A	20/09/2017
HELLENIC EXCHANGES-A.S.E. (CR)	Main Market
HELLENIC-AMERICAN SECURITIES S.A.	01/09/2014
NATIONAL SECURITIES S.A	25/06/2013
PIRAEUS SECURITIES S.A.	04/05/2015

List of Stocks under Market Making operations

Securities	Stock Category
Market Maker	Start Market Making
HELLENIC PETROLEUM (CR)	Main Market
HELLENIC-AMERICAN SECURITIES S.A.	14/09/2015
PIRAEUS SECURITIES S.A.	20/03/2017
HYGEIA SA (CR)	Main Market
HELLENIC-AMERICAN SECURITIES S.A.	18/04/2016
INTRACOM CONSTR. (CR)	Main Market
MERIT SECURITIES S.A.	05/06/2018
INTRACOM HOLDINGS (CR)	Main Market
ALPHA FINANCE INVESTMENT SERVICES S.A.	03/08/2018
LEON DEPOLAS SECURITIES S.A.	08/10/2018
INTRALOT (CR)	Main Market
ALPHA FINANCE INVESTMENT SERVICES S.A.	03/07/2017
EUROBANK EQUITIES INVESTMENT FIRM S.A	18/12/2017
HELLENIC-AMERICAN SECURITIES S.A.	30/05/2018
PANTELAKIS SECURITIES S.A.	07/05/2018
PIRAEUS SECURITIES S.A.	28/09/2013
J & P - AVAX SA (CR)	Main Market
EUROBANK EQUITIES INVESTMENT FIRM S.A	14/12/2015
JUMBO SA (CR)	Main Market
MERIT SECURITIES S.A.	06/11/2017
PIRAEUS SECURITIES S.A.	06/03/2017
KLOUKINAS - LAPPAS SA (CR)	Main Market
BETA SECURITIES S.A.	22/09/2014
KRI-KRI S.A. (CR)	Main Market
EUROBANK EQUITIES INVESTMENT FIRM S.A	07/05/2018
LEON DEPOLAS SECURITIES S.A.	16/01/2017
LAMDA DEVELOPMENT SA (CR)	Main Market
EUROBANK EQUITIES INVESTMENT FIRM S.A	08/12/2014
PANTELAKIS SECURITIES S.A.	06/11/2017
PIRAEUS SECURITIES S.A.	29/06/2017
LAMPSA HOTEL SA (CR)	Main Market
LEON DEPOLAS SECURITIES S.A.	16/01/2017
MARFIN INVESTMENT GROUP (CR)	Main Market
HELLENIC-AMERICAN SECURITIES S.A.	25/07/2014
LEON DEPOLAS SECURITIES S.A.	20/02/2017
PIRAEUS SECURITIES S.A.	02/02/2013
MLS MULTIMEDIA SA (CR)	Main Market
HELLENIC-AMERICAN SECURITIES S.A.	07/12/2015
MOTOR OIL (CR)	Main Market
HELLENIC-AMERICAN SECURITIES S.A.	01/09/2014
NATIONAL SECURITIES S.A	17/02/2014
PIRAEUS SECURITIES S.A.	04/05/2015
MYTILINEOS HOLDINGS (CR)	Main Market
EUROBANK EQUITIES INVESTMENT FIRM S.A	20/09/2017
NATIONAL SECURITIES S.A	25/06/2013
PIRAEUS SECURITIES S.A.	04/05/2015
NATIONAL BANK (CR)	Main Market
ALPHA FINANCE INVESTMENT SERVICES S.A.	08/01/2013
EUROBANK EQUITIES INVESTMENT FIRM S.A	24/10/2012
HELLENIC-AMERICAN SECURITIES S.A.	25/07/2014
LEON DEPOLAS SECURITIES S.A.	20/04/2015
MERIT SECURITIES S.A	03/09/2013
NATIONAL SECURITIES S.A	28/02/2013
PIRAEUS SECURITIES S.A.	08/09/2013
OPAP (CR)	Main Market
ALPHA FINANCE INVESTMENT SERVICES S.A.	08/01/2013
EUROBANK EQUITIES INVESTMENT FIRM S.A	24/10/2012
HELLENIC-AMERICAN SECURITIES S.A.	25/07/2014
MERIT SECURITIES S.A	20/03/2017
NATIONAL SECURITIES S.A	15/01/2013
PIRAEUS SECURITIES S.A.	04/05/2015
OTE (CR)	Main Market
ALPHA FINANCE INVESTMENT SERVICES S.A.	08/01/2013
EUROBANK EQUITIES INVESTMENT FIRM S.A	24/10/2012
HELLENIC-AMERICAN SECURITIES S.A.	25/07/2014
MERIT SECURITIES S.A	20/03/2017
NATIONAL SECURITIES S.A	01/12/2012
PIRAEUS SECURITIES S.A.	08/09/2013

List of Stocks under Market Making operations

Securities	Stock Category
Market Maker	Start Market Making
PAPOUTSANIS (CR)	Main Market
BETA SECURITIES S.A.	25/11/2013
PETROPOULOS PETROS (CR)	Main Market
BETA SECURITIES S.A.	28/05/2013
PIRAEUS BANK (CR)	Main Market
EUROBANK EQUITIES INVESTMENT FIRM S.A	23/10/2012
EUROXX SECURITIES S.A.	15/02/2016
MERIT SECURITIES S.A	16/09/2013
NATIONAL SECURITIES S.A	02/06/2013
PIRAEUS SECURITIES S.A.	16/02/2013
PLAISIO COMPUTERS SA (CR)	Main Market
BETA SECURITIES S.A.	05/05/2014
EUROBANK EQUITIES INVESTMENT FIRM S.A	02/03/2015
PPC (CR)	Main Market
ALPHA FINANCE INVESTMENT SERVICES S.A.	08/01/2013
ALPHA FINANCE INVESTMENT SERVICES S.A.	23/07/2018
EUROBANK EQUITIES INVESTMENT FIRM S.A	23/10/2012
HELLENIC-AMERICAN SECURITIES S.A.	28/12/2017
MERIT SECURITIES S.A	06/11/2017
NATIONAL SECURITIES S.A	26/03/2013
PIRAEUS SECURITIES S.A.	28/09/2013
QUALITY & RELIABILITY SA (CR)	Main Market
BETA SECURITIES S.A.	20/08/2014
QUEST HOLDINGS (CR)	Main Market
BETA SECURITIES S.A.	26/03/2018
S.KANAKIS SA (CR)	Main Market
BETA SECURITIES S.A.	01/10/2013
THRACE PLASTICS SA (CR)	Main Market
ALPHA FINANCE INVESTMENT SERVICES S.A.	26/03/2018
EUROBANK EQUITIES INVESTMENT FIRM S.A	26/03/2018
TITAN CEMENT (CR)	Main Market
NATIONAL SECURITIES S.A	17/02/2014
PIRAEUS SECURITIES S.A.	04/05/2015
VIOHALCO SA/NV (CB)	Main Market
ALPHA FINANCE INVESTMENT SERVICES S.A.	17/02/2014
EUROBANK EQUITIES INVESTMENT FIRM S.A	01/01/2017
MERIT SECURITIES S.A	17/03/2014

Underlying Asset				Derivatives Market														
Price max	Price min	Closing price	change	Delivery Month	Open price	Price max	Price min	Last price	Closing price	Last Bid	Last Ask	Fixing price*	Life high	Life low	Trades	Volume	Open Interest	
FTSE/Athex Large Cap																	(Trade Unit: 1 Index Point x 2€, Cash Settlement)	
1,580.52	1,548.58	1,571.00	1.45%	December 2018	1,548.00	1,575.75	1,548.00	1,562.00	1,562.00	---	---	1,561.50	1,710.00	---	216	861	3,981	
				January 2019	1,554.00	1,573.00	1,553.25	1,573.00	1,573.00	---	---	1,560.00	---	1,708.50	---	11	14	81
				February 2019	---	---	---	---	1,556.00	---	---	---	---	---	---	---	---	---
				March 2019	---	---	---	---	1,558.50	---	---	---	---	---	---	---	---	---
				June 2019	---	---	---	---	1,567.00	---	---	---	---	---	---	---	---	---
				September 2019	---	---	---	---	1,574.75	---	---	---	---	---	---	---	---	---

Derivatives notes

Fixing prices and final open positions can be retrieved from the following path <http://www.helex.gr/el/web/guest/statistics-end-of-day-derivatives>

Underlying Asset				Derivatives Market													
Price max	Price min	Closing price	change	Delivery Month	Open price	Price max	Price min	Last price	Closing price	Last Bid	Last Ask	Fixing price*	Life high	Life low	Trades	Volume	Open Interest
ADMIE (IPTO) HOLDING S.A. (CR)				(Contract Size: 100 Securities, Physical Delivery)													
1.584	1.532	1.532	-1.54%	December 2018	1.57	1.57	1.53	1.53	1.53	---	---	1.54	1.74	---	48	286	9,025
				March 2019	---	---	---	---	1.57	---	---	---	---	---	---	---	---
				June 2019	---	---	---	---	1.57	---	---	---	---	---	---	---	---
				September 2019	---	---	---	---	1.58	---	---	---	---	---	---	---	---
ALPHA BANK (CR)				(Contract Size: 100 Securities, Physical Delivery)													
1.117	1.071	1.104	3.18%	December 2018	1.07	1.11	1.07	1.10	1.10	---	---	1.10	1.70	---	187	2,636	25,079
				March 2019	1.09	1.09	1.09	1.09	1.09	---	---	1.11	1.26	---	1	3	232
				June 2019	---	---	---	---	1.08	---	---	---	---	---	---	---	---
				September 2019	---	---	---	---	1.09	---	---	---	---	---	---	---	---
ATTICA BANK S.A. (CR)				(Contract Size: 100 Securities, Physical Delivery)													
0.1222	0.1192	0.12	0.84%	December 2018	0.123	0.123	0.123	0.123	0.123	---	---	0.119	0.176	---	1	1	336
				March 2019	---	---	---	---	0.120	---	---	---	---	---	---	---	---
				June 2019	---	---	---	---	0.120	---	---	---	---	---	---	---	---
				September 2019	---	---	---	---	0.121	---	---	---	---	---	---	---	---
CC HBC AG (CR)				(Contract Size: 100 Securities, Physical Delivery)													
25.7	25.05	25.59	1.15%	December 2018	25.00	25.66	25.00	25.66	25.66	---	---	25.70	29.55	---	5	18	188
				March 2019	---	---	---	---	25.46	---	---	---	---	---	---	---	---
				June 2019	---	---	---	---	25.60	---	---	---	---	---	---	---	---
				September 2019	---	---	---	---	25.73	---	---	---	---	---	---	---	---
CENERGY HOLDINGS (CB)				(Contract Size: 100 Securities, Physical Delivery)													
1.08	1.05	1.08	1.12%	December 2018	1.08	1.09	1.07	1.07	1.07	---	---	1.06	1.29	---	8	16	4,238
				March 2019	---	---	---	---	1.07	---	---	1.06	1.28	---	---	---	---
				June 2019	---	---	---	---	1.08	---	---	---	---	---	---	---	---
				September 2019	---	---	---	---	1.09	---	---	---	---	---	---	---	---
ELLAKTOR (CR)				(Contract Size: 100 Securities, Physical Delivery)													
1.23	1.214	1.224	-0.49%	December 2018	1.23	1.23	1.21	1.21	1.21	---	---	1.22	1.79	---	25	63	4,688
				March 2019	---	---	---	---	1.24	---	---	---	---	---	---	---	---
				June 2019	---	---	---	---	1.24	---	---	---	---	---	---	---	---
				September 2019	---	---	---	---	1.25	---	---	---	---	---	---	---	---
EUROBANK ERGASIAS (CR)				(Contract Size: 100 Securities, Physical Delivery)													
0.4636	0.4444	0.4444	-0.58%	December 2018	0.460	0.462	0.445	0.447	0.447	---	---	0.451	0.716	---	239	4,749	32,095
				March 2019	---	---	---	---	0.450	---	---	---	---	---	---	---	---
				June 2019	---	---	---	---	0.452	---	---	---	---	---	---	---	---
				September 2019	---	---	---	---	0.455	---	---	---	---	---	---	---	---

Derivatives notes

Fixing prices and final open positions can be retrieved from the following path <http://www.helex.gr/el/web/guest/statistics-end-of-day-derivatives>

Underlying Asset				Derivatives Market														
Price max	Price min	Closing price	change	Delivery Month	Open price	Price max	Price min	Last price	Closing price	Last Bid	Last Ask	Fixing price*	Life high	Life low	Trades	Volume	Open Interest	
EYDAP S.A. (CR)				(Contract Size: 100 Securities, Physical Delivery)														
5.06	4.9	4.965	-0.10%	December 2018	4.99	4.99	4.94	4.94	4.94	---	---	5.08	---	5.53	---	3	11	637
				March 2019	---	---	---	---	5.00	---	---	---	---	---	---	---	---	
				June 2019	---	---	---	---	5.03	---	---	---	---	---	---	---	---	
				September 2019	---	---	---	---	5.05	---	---	---	---	---	---	---	---	
FOURLIS (CR)				(Contract Size: 100 Securities, Physical Delivery)														
4.6	4.405	4.405	0.11%	December 2018	4.51	4.58	4.42	4.55	4.55	---	---	4.41	---	5.77	---	9	17	165
				March 2019	---	---	---	---	4.43	---	---	---	---	---	---	---	---	
				June 2019	4.55	4.55	4.48	4.48	4.48	---	---	4.45	---	4.55	---	2	2	1
				September 2019	---	---	---	---	4.47	---	---	---	---	---	---	---	---	
GEK TERNA (CR)				(Contract Size: 100 Securities, Physical Delivery)														
4.42	4.32	4.4	-0.90%	December 2018	4.41	4.41	4.36	4.40	4.40	---	---	4.40	---	5.30	---	20	33	4,813
				March 2019	---	---	---	---	4.47	---	---	4.31	---	4.39	---	---	---	
				June 2019	---	---	---	---	4.49	---	---	---	---	---	---	---	---	
				September 2019	---	---	---	---	4.51	---	---	---	---	---	---	---	---	
GRIVALIA PROPERTIES (CR)				(Contract Size: 100 Securities, Physical Delivery)														
7.39	7.16	7.17	-1.38%	December 2018	7.30	7.31	7.20	7.20	7.20	---	---	7.17	---	8.35	---	4	6	174
				March 2019	---	---	---	---	7.32	---	---	7.19	---	8.38	---	---	---	7
				June 2019	---	---	---	---	7.36	---	---	---	---	---	---	---	---	
				September 2019	---	---	---	---	7.39	---	---	---	---	---	---	---	---	
HELLENIC EXCHANGES-A.S.E. (CR)				(Contract Size: 100 Securities, Physical Delivery)														
3.725	3.65	3.65	-1.22%	December 2018	3.71	3.71	3.68	3.68	3.68	---	---	3.65	---	4.52	---	2	6	547
				March 2019	---	---	---	---	3.72	---	---	---	---	---	---	---	---	
				June 2019	---	---	---	---	3.74	---	---	---	---	---	---	---	---	
				September 2019	---	---	---	---	3.76	---	---	---	---	---	---	---	---	
HELLENIC PETROLEUM (CR)				(Contract Size: 100 Securities, Physical Delivery)														
7.17	6.99	6.99	-0.14%	December 2018	7.16	7.16	6.75	6.79	6.79	---	---	6.82	---	7.87	---	60	127	2,909
				March 2019	---	---	---	---	7.04	---	---	6.89	---	7.34	---	---	---	
				June 2019	---	---	---	---	7.08	---	---	---	---	---	---	---	---	
				September 2019	---	---	---	---	7.12	---	---	---	---	---	---	---	---	
INTRACOM HOLDINGS (CR)				(Contract Size: 57 Securities, Physical Delivery)														
0.689	0.666	0.679	1.19%	December 2018	---	---	---	---	0.672	---	---	0.673	---	1.17	---	---	---	4,674
				March 2019	0.680	0.699	0.680	0.699	0.699	---	---	0.680	---	0.760	---	11	134	137
				June 2019	---	---	---	---	0.679	---	---	---	---	---	---	---	---	
				September 2019	---	---	---	---	0.682	---	---	---	---	---	---	---	---	

Derivatives notes

Fixing prices and final open positions can be retrieved from the following path <http://www.helex.gr/el/web/guest/statistics-end-of-day-derivatives>

Underlying Asset				Derivatives Market													
Price max	Price min	Closing price	change	Delivery Month	Open price	Price max	Price min	Last price	Closing price	Last Bid	Last Ask	Fixing price*	Life high	Life low	Trades	Volume	Open Interest
INTRALOT (CR)				(Contract Size: 100 Securities, Physical Delivery)													
0.554	0.518	0.518	-5.82%	December 2018	0.544	0.552	0.500	0.520	0.520	---	---	0.521	0.740	---	103	1,045	4,893
				March 2019	---	---	---	---	0.554	---	---	---	---	---	---	---	---
				June 2019	---	---	---	---	0.557	---	---	---	---	---	---	---	---
				September 2019	---	---	---	---	0.559	---	---	---	---	---	---	---	---
JUMBO SA (CR)				(Contract Size: 100 Securities, Physical Delivery)													
12.6	12.02	12.4	2.48%	December 2018	11.99	12.34	11.90	12.15	12.15	---	---	12.35	13.09	---	32	66	1,078
				March 2019	---	---	---	---	12.18	---	---	---	---	---	---	---	---
				June 2019	---	---	---	---	12.24	---	---	---	---	---	---	---	---
				September 2019	---	---	---	---	12.30	---	---	---	---	---	---	---	---
LAMDA DEVELOPMENT SA (CR)				(Contract Size: 100 Securities, Physical Delivery)													
5.86	5.76	5.8	0.00%	December 2018	5.84	5.84	5.82	5.82	5.82	---	---	5.83	6.95	---	3	3	1,935
				March 2019	---	---	---	---	5.84	---	---	---	---	---	---	---	---
				June 2019	---	---	---	---	5.87	---	---	---	---	---	---	---	---
				September 2019	---	---	---	---	5.90	---	---	---	---	---	---	---	---
MARFIN INVESTMENT GROUP (CR)				(Contract Size: 100 Securities, Physical Delivery)													
0.0701	0.0686	0.0699	1.60%	December 2018	0.070	0.070	0.068	0.069	0.069	---	---	0.070	0.101	---	12	300	50,336
				March 2019	---	---	---	---	0.069	---	---	0.071	0.092	---	---	---	2,000
				June 2019	---	---	---	---	0.070	---	---	---	---	---	---	---	---
				September 2019	---	---	---	---	0.070	---	---	---	---	---	---	---	---
MOTOR OIL (CR)				(Contract Size: 100 Securities, Physical Delivery)													
20.5	19.88	20.2	1.81%	December 2018	19.70	20.15	19.66	19.99	19.99	---	---	19.90	23.35	---	78	140	361
				March 2019	---	---	---	---	19.97	---	---	19.69	22.05	---	---	---	1
				June 2019	---	---	---	---	20.07	---	---	---	---	---	---	---	---
				September 2019	---	---	---	---	20.18	---	---	---	---	---	---	---	---
MYTILINEOS HOLDINGS (CR)				(Contract Size: 100 Securities, Physical Delivery)													
7.25	6.99	7.06	0.57%	December 2018	7.20	7.25	7.02	7.08	7.08	---	---	7.09	9.05	---	110	364	7,636
				March 2019	---	---	---	---	7.06	---	---	7.10	8.75	---	---	---	7
				June 2019	---	---	---	---	7.10	---	---	---	---	---	---	---	---
				September 2019	---	---	---	---	7.14	---	---	---	---	---	---	---	---
NATIONAL BANK (CR)				(Contract Size: 10 Securities, Physical Delivery)													
1.037	1	1.009	0.70%	December 2018	1.01	1.04	1.00	1.01	1.01	---	---	1.02	2.30	---	149	11,242	272,658
				March 2019	---	---	---	---	1.01	---	---	1.03	1.23	---	---	---	191
				June 2019	---	---	---	---	1.01	---	---	---	---	---	---	---	---
				September 2019	---	---	---	---	1.02	---	---	---	---	---	---	---	---

Derivatives notes

Fixing prices and final open positions can be retrieved from the following path <http://www.helex.gr/el/web/guest/statistics-end-of-day-derivatives>

Underlying Asset				Derivatives Market														
Price max	Price min	Closing price	change	Delivery Month	Open price	Price max	Price min	Last price	Closing price	Last Bid	Last Ask	Fixing price*	Life high	Life low	Trades	Volume	Open Interest	
OPAP (CR)				(Contract Size: 100 Securities, Physical Delivery)														
7.98	7.68	7.915	3.60%	December 2018	7.74	7.96	7.70	7.93	7.93	---	---	7.84	---	9.67	---	95	326	2,815
				March 2019	---	---	---	---	7.69	---	---	8.21	---	9.16	---	---	---	397
				June 2019	---	---	---	---	7.73	---	---	---	---	---	---	---	---	---
				September 2019	---	---	---	---	7.77	---	---	---	---	---	---	---	---	---
OTE (CR)				(Contract Size: 100 Securities, Physical Delivery)														
10.14	9.84	10.1	2.96%	December 2018	9.88	10.13	9.84	10.10	10.10	---	---	9.98	---	11.06	---	131	454	2,334
				March 2019	---	---	---	---	9.87	---	---	---	---	---	---	---	---	---
				June 2019	---	---	---	---	9.93	---	---	---	---	---	---	---	---	---
				September 2019	---	---	---	---	9.98	---	---	---	---	---	---	---	---	---
P.P.A. S.A. (CR)				(Contract Size: 100 Securities, Physical Delivery)														
15.68	15.04	15.04	-1.05%	December 2018	15.52	15.52	15.19	15.19	15.19	---	---	15.14	---	16.84	---	5	11	248
				March 2019	---	---	---	---	15.30	---	---	15.49	---	16.48	---	---	---	340
				June 2019	---	---	---	---	15.38	---	---	---	---	---	---	---	---	---
				September 2019	---	---	---	---	15.46	---	---	---	---	---	---	---	---	---
PIRAEUS BANK (CR)				(Contract Size: 100 Securities, Physical Delivery)														
0.97	0.9205	0.96	2.13%	December 2018	0.959	0.970	0.930	0.954	0.954	---	---	0.962	---	2.47	---	135	1,324	14,840
				March 2019	---	---	---	---	0.946	---	---	0.970	---	1.25	---	---	---	101
				June 2019	---	---	---	---	0.951	---	---	---	---	---	---	---	---	---
				September 2019	---	---	---	---	0.956	---	---	---	---	---	---	---	---	---
PPC (CR)				(Contract Size: 100 Securities, Physical Delivery)														
1.235	1.182	1.211	1.68%	December 2018	1.20	1.23	1.19	1.21	1.21	---	---	1.21	---	1.75	---	98	544	8,224
				March 2019	---	---	---	---	1.20	---	---	1.23	---	1.36	---	---	---	50
				June 2019	---	---	---	---	1.21	---	---	---	---	---	---	---	---	---
				September 2019	---	---	---	---	1.21	---	---	---	---	---	---	---	---	---
TERNA ENERGY (CR)				(Contract Size: 100 Securities, Physical Delivery)														
6.21	6.1	6.16	-0.65%	December 2018	6.18	6.18	6.12	6.16	6.16	---	---	6.17	---	6.52	---	10	20	5,949
				March 2019	6.25	6.25	6.15	6.20	6.20	---	---	6.21	---	6.25	---	3	30	20
				June 2019	---	---	---	---	6.27	---	---	---	---	---	---	---	---	---
				September 2019	---	---	---	---	6.30	---	---	---	---	---	---	---	---	---
TITAN CEMENT (CR)				(Contract Size: 100 Securities, Physical Delivery)														
19.8	19.4	19.5	-0.51%	December 2018	19.70	19.70	19.60	19.60	19.60	---	---	19.53	---	22.26	---	2	4	216
				March 2019	---	---	---	---	19.73	---	---	19.50	---	19.60	---	---	---	2
				June 2019	---	---	---	---	19.83	---	---	---	---	---	---	---	---	---
				September 2019	---	---	---	---	19.93	---	---	---	---	---	---	---	---	---

Derivatives notes

Fixing prices and final open positions can be retrieved from the following path <http://www.helex.gr/el/web/guest/statistics-end-of-day-derivatives>

Underlying Asset				Derivatives Market													
Price max	Price min	Closing price	change	Delivery Month	Open price	Price max	Price min	Last price	Closing price	Last Bid	Last Ask	Fixing price*	Life high	Life low	Trades	Volume	Open Interest
VIOHALCO SA/NV (CB)				(Contract Size: 100 Securities, Physical Delivery)													
2.545	2.49	2.49	-0.40%	December 2018	2.51	2.55	2.49	2.50	2.50	---	---	2.51	3.17	---	33	168	5,324
				March 2019	---	---	---	---	2.52	---	---	---	---	---	---	---	---
				June 2019	---	---	---	---	2.53	---	---	---	---	---	---	---	---
				September 2019	---	---	---	---	2.54	---	---	---	---	---	---	---	---

FTSE/Athex Large Cap

(Trade Unit: 1 Index Point x 2€ - Excercise Style: European, Cash Settlement)

Call Options																	Put Options																			
December 2018								January 2019								Other Months		December 2018								January 2019								Other Months		
Exerise Price	Open price	Price max	Price min	Last price	Closing price	Volume	Open Interest	Open price	Price max	Price min	Last price	Closing price	Volume	Open Interest	Volume	Open Interest	Open price	Price max	Price min	Last price	Closing price	Volume	Open Interest	Open price	Price max	Price min	Last price	Closing price	Volume	Open Interest	Volume	Open Interest	Exerise Price			
1,425	0.00	0.00	0.00	-	121.00	-	-	0.00	0.00	0.00	-	127.00	-	-			0.00	0.00	0.00	-	2.50	-	-	0.00	0.00	0.00	-	7.40	-	-			1,425			
1,450	0.00	0.00	0.00	-	98.50	-	-	0.00	0.00	0.00	-	106.00	-	-			0.00	0.00	0.00	-	5.00	-	-	0.00	0.00	0.00	-	11.75	-	-			1,450			
1,475	0.00	0.00	0.00	-	77.50	-	-	0.00	0.00	0.00	-	87.50	-	-			0.00	0.00	0.00	-	9.20	-	-	0.00	0.00	0.00	-	17.50	-	-			1,475			
1,500	0.00	0.00	0.00	-	59.00	-	-	0.00	0.00	0.00	-	70.50	-	-			0.00	0.00	0.00	-	15.75	-	-	0.00	0.00	0.00	-	25.50	-	-			1,500			
1,525	0.00	0.00	0.00	-	43.25	-	20	0.00	0.00	0.00	-	55.50	-	-			22.75	0.00	15.00	17.50	17.50	6	6	22.50	24.00	22.00	24.00	24.00	41	3			1,525			
1,550	0.00	0.00	0.00	-	30.25	-	31	0.00	0.00	0.00	-	42.50	-	-			30.00	0.00	25.00	26.75	26.75	27	70	0.00	0.00	0.00	-	47.50	-	20			1,550			
1,575	25.00	26.75	24.00	26.75	26.75	52	43	0.00	0.00	0.00	-	32.00	-	17			34.50	26.75	34.50	34.50	34.50	1	24	0.00	0.00	0.00	-	62.00	-	60			1,575			
1,600	0.00	0.00	0.00	-	13.00	-	23	28.50	31.25	28.50	31.25	31.25	41	60			52.50	0.00	50.00	50.00	50.00	15	15	0.00	0.00	0.00	-	78.50	-	20			1,600			
1,625	10.50	12.00	9.50	12.00	12.00	30	56	25.00	25.00	25.00	25.00	25.00	2	22			0.00	12.00	0.00	-	89.00	-	134	0.00	0.00	0.00	-	96.50	-	-			1,625			
1,650	0.00	0.00	0.00	-	4.60	-	130	0.00	0.00	0.00	-	11.75	-	-			0.00	0.00	0.00	-	111.00	-	178	0.00	0.00	0.00	-	116.00	-	20			1,650			
1,675	0.00	0.00	0.00	-	2.50	-	60	0.00	0.00	0.00	-	8.00	-	1			0.00	0.00	0.00	-	134.00	-	126	0.00	0.00	0.00	-	138.00	-	20			1,675			
1,700	2.80	2.80	2.80	2.80	2.80	20	96	0.00	0.00	0.00	-	5.30	-	-			0.00	2.80	0.00	-	158.00	-	51	0.00	0.00	0.00	-	160.00	-	-			1,700			
1,725	0.00	0.00	0.00	-	0.66	-	90	0.00	0.00	0.00	-	3.50	-	-			0.00	0.00	0.00	-	182.00	-	20	0.00	0.00	0.00	-	183.00	-	-			1,725			
1,750	0.00	0.00	0.00	-	0.31	-	20	0.00	0.00	0.00	-	2.20	-	-			0.00	0.00	0.00	-	206.00	-	-	0.00	0.00	0.00	-	207.00	-	-			1,750			
1,775	0.00	0.00	0.00	-	0.14	-	-	0.00	0.00	0.00	-	1.40	-	-			0.00	0.00	0.00	-	231.00	-	-	0.00	0.00	0.00	-	231.00	-	-			1,775			
1,800	0.00	0.00	0.00	-	0.06	-	-	0.00	0.00	0.00	-	0.82	-	-			0.00	0.00	0.00	-	256.00	-	-	0.00	0.00	0.00	-	255.00	-	-			1,800			
1,825	0.00	0.00	0.00	-	0.03	-	-	0.00	0.00	0.00	-	0.48	-	-			0.00	0.00	0.00	-	281.00	-	-	0.00	0.00	0.00	-	280.00	-	-			1,825			
1,850	0.00	0.00	0.00	-	0.01	-	-	-	-	-	-	-	-	-			0.00	0.00	0.00	-	306.00	-	-	-	-	-	-	-	-	-			1,850			
1,875	0.00	0.00	0.00	-	0.04	-	-	-	-	-	-	-	-	-			0.00	0.00	0.00	-	331.00	-	-	-	-	-	-	-	-	-			1,875			
1,900	0.00	0.00	0.00	-	0.02	-	-	-	-	-	-	-	-	-			0.00	0.00	0.00	-	356.00	-	-	-	-	-	-	-	-	-			1,900			
1,925	0.00	0.00	0.00	-	0.01	-	-	-	-	-	-	-	-	-			0.00	0.00	0.00	-	381.00	-	-	-	-	-	-	-	-	-			1,925			
1,950	0.00	0.00	0.00	-	0.02	-	-	-	-	-	-	-	-	-			0.00	0.00	0.00	-	406.00	-	-	-	-	-	-	-	-	-			1,950			
1,975	0.00	0.00	0.00	-	0.01	-	-	-	-	-	-	-	-	-			0.00	0.00	0.00	-	431.00	-	-	-	-	-	-	-	-	-			1,975			
2,000	0.00	0.00	0.00	-	0.01	-	-	-	-	-	-	-	-	-			0.00	0.00	0.00	-	456.00	-	-	-	-	-	-	-	-	-			2,000			
2,050	0.00	0.00	0.00	-	0.01	-	-	-	-	-	-	-	-	-			0.00	0.00	0.00	-	506.00	-	-	-	-	-	-	-	-	-			2,050			
2,100	0.00	0.00	0.00	-	0.01	-	-	-	-	-	-	-	-	-			0.00	0.00	0.00	-	556.00	-	-	-	-	-	-	-	-	-			2,100			
2,150	0.00	0.00	0.00	-	0.01	-	-	-	-	-	-	-	-	-			0.00	0.00	0.00	-	605.00	-	-	-	-	-	-	-	-	-			2,150			
2,200	0.00	0.00	0.00	-	0.01	-	-	-	-	-	-	-	-	-			0.00	0.00	0.00	-	655.00	-	-	-	-	-	-	-	-	-			2,200			
2,250	0.00	0.00	0.00	-	0.01	-	-	-	-	-	-	-	-	-			0.00	0.00	0.00	-	705.00	-	-	-	-	-	-	-	-	-			2,250			
2,300	0.00	0.00	0.00	-	0.01	-	-	-	-	-	-	-	-	-			0.00	0.00	0.00	-	755.00	-	-	-	-	-	-	-	-	-			2,300			
2,350	0.00	0.00	0.00	-	0.01	-	-	-	-	-	-	-	-	-			0.00	0.00	0.00	-	805.00	-	-	-	-	-	-	-	-	-			2,350			
2,400	0.00	0.00	0.00	-	0.01	-	-	-	-	-	-	-	-	-			0.00	0.00	0.00	-	855.00	-	-	-	-	-	-	-	-	-			2,400			
2,450	0.00	0.00	0.00	-	0.01	-	-	-	-	-	-	-	-	-			0.00	0.00	0.00	-	905.00	-	-	-	-	-	-	-	-	-			2,450			
2,500	0.00	0.00	0.00	-	0.02	-	-	-	-	-	-	-	-	-			0.00	0.00	0.00	-	955.00	-	-	-	-	-	-	-	-	-			2,500			
Totals:						102	569						43	100	0	0						49	624					41	143	0	0					
Number of Trades:						11							4	0								16					4		0							

ALPHA BANK (CR)

(Contract Size: 100 Securities, Exercise Style: American, Physical Delivery)

Call Options																	Put Options																	
Exercise Price	December 2018							January 2019							Other Months		December 2018								January 2019							Other Months		Exercise Price
	Open price	Price max	Price min	Last price	Closing price	Volume	Open Interest	Open price	Price max	Price min	Last price	Closing price	Volume	Open Interest	Volume	Open Interest	Open price	Price max	Price min	Last price	Closing price	Volume	Open Interest	Open price	Price max	Price min	Last price	Closing price	Volume	Open Interest	Volume	Open Interest		
0.800	0.000	0.000	0.000		0.274	-	-	0.000	0.000	0.000		0.278	-	-			0.000	0.000	0.000		0.002	-	-	0.000	0.000	0.000		0.005	-	-			0.008	
0.850	0.000	0.000	0.000		0.227	-	-	0.000	0.000	0.000		0.234	-	-			0.000	0.000	0.000		0.006	-	-	0.000	0.000	0.000		0.011	-	-			0.009	
0.900	0.000	0.000	0.000		0.184	-	-	0.000	0.000	0.000		0.192	-	-			0.000	0.000	0.000		0.012	-	-	0.000	0.000	0.000		0.020	-	-			0.009	
0.950	0.000	0.000	0.000		0.144	-	-	0.000	0.000	0.000		0.155	-	-			0.000	0.000	0.000		0.023	-	-	0.000	0.000	0.000		0.032	-	-			0.010	
1.000	0.000	0.000	0.000		0.110	-	10	0.000	0.000	0.000		0.123	-	-			0.000	0.000	0.000		0.038	-	-	0.000	0.000	0.000		0.050	-	-			0.010	
1.100	0.000	0.000	0.000		0.058	-	10	0.000	0.000	0.000		0.073	-	50			0.000	0.000	0.000		0.087	-	-	0.000	0.000	0.000		0.100	-	-			0.011	
1.200	0.000	0.000	0.000		0.028	-	20	0.000	0.000	0.000		0.040	-	-			0.000	0.000	0.000		0.156	-	-	0.000	0.000	0.000		0.166	-	-			0.012	
1.300	0.000	0.000	0.000		0.011	-	30	0.000	0.000	0.000		0.021	-	-			0.000	0.000	0.000		0.240	-	-	0.000	0.000	0.000		0.247	-	-			0.013	
1.400	0.000	0.000	0.000		0.004	-	-	0.000	0.000	0.000		0.010	-	-			0.000	0.000	0.000		0.333	-	-	0.000	0.000	0.000		0.337	-	-			0.014	
1.500	0.000	0.000	0.000		0.002	-	-	0.000	0.000	0.000		0.004	-	-			0.000	0.000	0.000		0.431	-	-	0.000	0.000	0.000		0.432	-	-			0.015	
1.600	0.000	0.000	0.000		0.001	-	-	0.000	0.000	0.000		0.002	-	-			0.000	0.000	0.000		0.530	-	-	0.000	0.000	0.000		0.530	-	-			0.016	
1.700	0.000	0.000	0.000		0.001	-	-	0.000	0.000	0.000		0.001	-	-			0.000	0.000	0.000		0.630	-	-	0.000	0.000	0.000		0.630	-	-			0.017	
1.800	0.000	0.000	0.000		0.001	-	-	0.000	0.000	0.000		0.001	-	-			0.000	0.000	0.000		0.730	-	-	0.000	0.000	0.000		0.730	-	-			0.018	
1.900	0.000	0.000	0.000		0.001	-	-						-	-			0.000	0.000	0.000		0.830	-	-				-	-			0.019			
2.000	0.000	0.000	0.000		0.001	-	-						-	-			0.000	0.000	0.000		0.930	-	-				-	-			0.020			
2.200	0.000	0.000	0.000		0.001	-	-						-	-			0.000	0.000	0.000		1.13	-	-				-	-			0.022			
2.400	0.000	0.000	0.000		0.001	-	-						-	-			0.000	0.000	0.000		1.33	-	-				-	-			0.024			
2.600	0.000	0.000	0.000		0.001	-	-						-	-			0.000	0.000	0.000		1.53	-	-				-	-			0.026			
2.800	0.000	0.000	0.000		0.001	-	-						-	-			0.000	0.000	0.000		1.73	-	-				-	-			0.028			
3.000	0.000	0.000	0.000		0.001	-	-						-	-			0.000	0.000	0.000		1.93	-	-				-	-			0.030			
3.200	0.000	0.000	0.000		0.001	-	-						-	-			0.000	0.000	0.000		2.13	-	-				-	-			0.032			
Totals:							0	70					0	50	0	0						0	0					0	0	0	0			
Number of Trades:							0						0		0							0.00						0		0				

NATIONAL BANK (CR)

(Contract Size: 100 Securities, Exercise Style: American, Physical Delivery)

Call Options																	Put Options																			
December 2018								January 2019								Other Months		December 2018								January 2019								Other Months		
Exercise Price	Open price	Price max	Price min	Last price	Closing price	Volume	Open Interest	Open price	Price max	Price min	Last price	Closing price	Volume	Open Interest	Volume	Open Interest	Open price	Price max	Price min	Last price	Closing price	Volume	Open Interest	Open price	Price max	Price min	Last price	Closing price	Volume	Open Interest	Volume	Open Interest	Exercise Price			
0.050	0.000	0.000	0.000		0.950	-	-							-	-		0.000	0.000	0.000		0.010	-	-					-	-			0.001				
0.100	0.000	0.000	0.000		0.900	-	-							-	-		0.000	0.000	0.000		0.005	-	-					-	-			0.001				
0.150	0.000	0.000	0.000		0.850	-	-							-	-		0.000	0.000	0.000		0.057	-	-					-	-			0.002				
0.200	0.000	0.000	0.000		0.800	-	-							-	-		0.000	0.000	0.000		0.206	-	-					-	-			0.002				
0.250	0.000	0.000	0.000		0.750	-	-							-	-		0.000	0.000	0.000		0.457	-	-					-	-			0.003				
0.300	0.000	0.000	0.000		0.701	-	-							-	-		0.000	0.000	0.000		0.797	-	-					-	-			0.003				
0.350	0.000	0.000	0.000		0.651	-	-							-	-		0.000	0.000	0.000		1.19	-	-					-	-			0.004				
0.400	0.000	0.000	0.000		0.601	-	-							-	-		0.000	0.000	0.000		1.63	-	-					-	-			0.004				
0.450	0.000	0.000	0.000		0.551	-	-							-	-		0.000	0.000	0.000		2.09	-	-					-	-			0.005				
0.500	0.000	0.000	0.000		0.501	-	-							-	-		0.000	0.000	0.000		2.57	-	-					-	-			0.005				
0.550	0.000	0.000	0.000		0.451	-	-							-	-		0.000	0.000	0.000		3.06	-	-					-	-			0.006				
0.600	0.000	0.000	0.000		0.401	-	-							-	-		0.000	0.000	0.000		3.55	-	-					-	-			0.006				
0.750	0.000	0.000	0.000		0.253	-	-	0.000	0.000	0.000		0.258	-	-			0.000	0.000	0.000		0.002	-	-	0.000	0.000	0.000		0.005	-	-			0.008			
0.800	0.000	0.000	0.000		0.206	-	-	0.000	0.000	0.000		0.213	-	-			0.000	0.000	0.000		0.005	-	-	0.000	0.000	0.000		0.011	-	-			0.008			
0.850	0.000	0.000	0.000		0.163	-	-	0.000	0.000	0.000		0.173	-	-			0.000	0.000	0.000		0.011	-	-	0.000	0.000	0.000		0.020	-	-			0.009			
0.900	0.000	0.000	0.000		0.124	-	-	0.000	0.000	0.000		0.137	-	-			0.000	0.000	0.000		0.023	-	-	0.000	0.000	0.000		0.034	-	-			0.009			
0.950	0.000	0.000	0.000		0.091	-	10	0.000	0.000	0.000		0.106	-	-			0.000	0.000	0.000		0.039	-	-	0.000	0.000	0.000		0.053	-	-			0.010			
1.000	0.000	0.000	0.000		0.064	-	-	0.000	0.000	0.000		0.080	-	100			0.000	0.000	0.000		0.062	-	-	0.000	0.000	0.000		0.077	-	-			0.010			
1.100	0.000	0.000	0.000		0.028	-	-	0.000	0.000	0.000		0.043	-	100			0.000	0.000	0.000		0.127	-	-	0.000	0.000	0.000		0.140	-	-			0.011			
1.200	0.000	0.000	0.000		0.011	-	20	0.000	0.000	0.000		0.021	-	-			0.000	0.000	0.000		0.209	-	-	0.000	0.000	0.000		0.218	-	-			0.012			
1.300	0.000	0.000	0.000		0.004	-	10	0.000	0.000	0.000		0.010	-	-			0.000	0.000	0.000		0.302	-	-	0.000	0.000	0.000		0.307	-	-			0.013			
1.400	0.000	0.000	0.000		0.001	-	-	0.000	0.000	0.000		0.004	-	-			0.000	0.000	0.000		0.400	-	-	0.000	0.000	0.000		0.402	-	-			0.014			
1.500	0.000	0.000	0.000		0.001	-	10	0.000	0.000	0.000		0.002	-	-			0.000	0.000	0.000		0.500	-	-	0.000	0.000	0.000		0.500	-	-			0.015			
1.600	0.000	0.000	0.000		0.001	-	60	0.000	0.000	0.000		0.001	-	-			0.000	0.000	0.000		0.600	-	-	0.000	0.000	0.000		0.600	-	-			0.016			
1.700	0.000	0.000	0.000		0.003	-	-	0.000	0.000	0.000		0.004	-	-			0.000	0.000	0.000		0.700	-	-	0.000	0.000	0.000		0.700	-	-			0.017			
1.800	0.000	0.000	0.000		0.001	-	-	0.000	0.000	0.000		0.002	-	-			0.000	0.000	0.000		0.800	-	-	0.000	0.000	0.000		0.800	-	-			0.018			
1.900	0.000	0.000	0.000		0.001	-	60	0.000	0.000	0.000		0.001	-	-			0.000	0.000	0.000		0.900	-	-	0.000	0.000	0.000		0.900	-	-			0.019			
2.000	0.000	0.000	0.000		0.001	-	-	0.000	0.000	0.000		0.003	-	-			0.000	0.000	0.000		1.00	-	60	0.000	0.000	0.000		1.00	-	-			0.020			
2.200	0.000	0.000	0.000		0.004	-	-							-	-		0.000	0.000	0.000		1.20	-	-					-	-			0.022				
2.400	0.000	0.000	0.000		0.001	-	-							-	-		0.000	0.000	0.000		1.40	-	-					-	-			0.024				
2.600	0.000	0.000	0.000		0.001	-	-							-	-		0.000	0.000	0.000		1.60	-	-					-	-			0.026				
2.800	0.000	0.000	0.000		0.001	-	-							-	-		0.000	0.000	0.000		1.80	-	-					-	-			0.028				
3.000	0.000	0.000	0.000		0.001	-	-							-	-		0.000	0.000	0.000		2.00	-	-					-	-			0.030				
3.200	0.000	0.000	0.000		0.001	-	-							-	-		0.000	0.000	0.000		2.20	-	-					-	-			0.032				
3.400	0.000	0.000	0.000		0.001	-	-							-	-		0.000	0.000	0.000		2.40	-	-					-	-			0.034				

NATIONAL BANK (CR)

(Contract Size: 100 Securities, Exercise Style: American, Physical Delivery)

Call Options																	Put Options																			
Exercise Price	December 2018							January 2019							Other Months		December 2018							January 2019							Other Months		Exercise Price			
	Open price	Price max	Price min	Last price	Closing price	Volume	Open Interest	Open price	Price max	Price min	Last price	Closing price	Volume	Open Interest	Volume	Open Interest	Open price	Price max	Price min	Last price	Closing price	Volume	Open Interest	Open price	Price max	Price min	Last price	Closing price	Volume	Open Interest	Volume	Open Interest				
Totals:							0	170							0	200	0	40							0	60							0	0	0	0
Number of Trades:							0								0		0								0.00								0		0	

OPAP (CR)

(Contract Size: 100 Securities, Exercise Style: American, Physical Delivery)

Call Options																	Put Options																			
December 2018								January 2019								Other Months		December 2018								January 2019								Other Months		
Exercise Price	Open price	Price max	Price min	Last price	Closing price	Volume	Open Interest	Open price	Price max	Price min	Last price	Closing price	Volume	Open Interest	Volume	Open Interest	Open price	Price max	Price min	Last price	Closing price	Volume	Open Interest	Open price	Price max	Price min	Last price	Closing price	Volume	Open Interest	Volume	Open Interest	Exercise Price			
5.600	0.000	0.000	0.000		2.05	-	-	0.000	0.000	0.000		2.06	-	-			0.000	0.000	0.000		0.001	-	-	0.000	0.000	0.000		0.001	-	-			0.056			
6.000	0.000	0.000	0.000		1.65	-	-	0.000	0.000	0.000		1.66	-	-			0.000	0.000	0.000		0.001	-	-	0.000	0.000	0.000		0.002	-	-			0.060			
6.400	0.000	0.000	0.000		1.25	-	-	0.000	0.000	0.000		1.27	-	-			0.000	0.000	0.000		0.002	-	-	0.000	0.000	0.000		0.014	-	-			0.064			
6.800	0.000	0.000	0.000		0.866	-	-	0.000	0.000	0.000		0.913	-	-			0.000	0.000	0.000		0.014	-	-	0.000	0.000	0.000		0.051	-	-			0.068			
7.200	0.000	0.000	0.000		0.521	-	-	0.000	0.000	0.000		0.599	-	-			0.000	0.000	0.000		0.068	-	-	0.000	0.000	0.000		0.136	-	-			0.072			
7.600	0.000	0.000	0.000		0.260	-	-	0.000	0.000	0.000		0.358	-	-			0.000	0.000	0.000		0.207	-	-	0.000	0.000	0.000		0.295	-	-			0.076			
8.000	0.000	0.000	0.000		0.103	-	-	0.000	0.000	0.000		0.193	-	-			0.000	0.000	0.000		0.452	-	-	0.000	0.000	0.000		0.531	-	-			0.080			
8.400	0.000	0.000	0.000		0.033	-	-	0.000	0.000	0.000		0.092	-	-			0.000	0.000	0.000		0.783	-	-	0.000	0.000	0.000		0.831	-	-			0.084			
8.800	0.000	0.000	0.000		0.008	-	-	0.000	0.000	0.000		0.041	-	-			0.000	0.000	0.000		1.16	-	-	0.000	0.000	0.000		1.18	-	-			0.088			
9.200	0.000	0.000	0.000		0.002	-	-	0.000	0.000	0.000		0.016	-	-			0.000	0.000	0.000		1.56	-	-	0.000	0.000	0.000		1.56	-	-			0.092			
9.600	0.000	0.000	0.000		0.004	-	-	0.000	0.000	0.000		0.006	-	-			0.000	0.000	0.000		1.96	-	-	0.000	0.000	0.000		1.96	-	-			0.096			
10.000	0.000	0.000	0.000		0.001	-	-	0.000	0.000	0.000		0.002	-	-			0.000	0.000	0.000		2.36	-	-	0.000	0.000	0.000		2.36	-	-			0.100			
11.000	0.000	0.000	0.000		0.001	-	-	0.000	0.000	0.000		0.001	-	-			0.000	0.000	0.000		3.36	-	-	0.000	0.000	0.000		3.36	-	-			0.110			
12.000	0.000	0.000	0.000		0.001	-	-	0.000	0.000	0.000		0.001	-	-			0.000	0.000	0.000		4.36	-	-	0.000	0.000	0.000		4.36	-	-			0.120			
13.000	0.000	0.000	0.000		0.001	-	-						-	-			0.000	0.000	0.000		5.36	-	-				-	-			0.130					
14.000	0.000	0.000	0.000		0.001	-	-						-	-			0.000	0.000	0.000		6.36	-	-				-	-			0.140					
15.000	0.000	0.000	0.000		0.001	-	-						-	-			0.000	0.000	0.000		7.36	-	-				-	-			0.150					
16.000	0.000	0.000	0.000		0.001	-	-						-	-			0.000	0.000	0.000		8.36	-	-				-	-			0.160					
Totals:						0	0						0	0	0	0						0	0					0	0	0	0					
Number of Trades:						0							0		0							0.00						0		0						

OTE (CR)

(Contract Size: 100 Securities, Exercise Style: American, Physical Delivery)

Call Options																	Put Options																			
December 2018								January 2019								Other Months		December 2018								January 2019								Other Months		
Exercise Price	Open price	Price max	Price min	Last price	Closing price	Volume	Open Interest	Open price	Price max	Price min	Last price	Closing price	Volume	Open Interest	Volume	Open Interest	Open price	Price max	Price min	Last price	Closing price	Volume	Open Interest	Open price	Price max	Price min	Last price	Closing price	Volume	Open Interest	Volume	Open Interest	Exercise Price			
7.600	0.000	0.000	0.000		2.22	-	-	0.000	0.000	0.000		2.24	-	-			0.000	0.000	0.000		0.001	-	-	0.000	0.000	0.000		0.002	-	-			0.076			
8.000	0.000	0.000	0.000		1.82	-	-	0.000	0.000	0.000		1.84	-	-			0.000	0.000	0.000		0.001	-	-	0.000	0.000	0.000		0.008	-	-			0.080			
8.400	0.000	0.000	0.000		1.43	-	-	0.000	0.000	0.000		1.46	-	-			0.000	0.000	0.000		0.005	-	-	0.000	0.000	0.000		0.027	-	-			0.084			
8.800	0.000	0.000	0.000		1.05	-	-	0.000	0.000	0.000		1.11	-	-			0.000	0.000	0.000		0.022	-	-	0.000	0.000	0.000		0.072	-	-			0.088			
9.200	0.000	0.000	0.000		0.700	-	-	0.000	0.000	0.000		0.796	-	-			0.000	0.000	0.000		0.074	-	-	0.000	0.000	0.000		0.157	-	-			0.092			
9.600	0.000	0.000	0.000		0.417	-	-	0.000	0.000	0.000		0.538	-	-			0.000	0.000	0.000		0.192	-	-	0.000	0.000	0.000		0.299	-	-			0.096			
10.000	0.000	0.000	0.000		0.219	-	-	0.000	0.000	0.000		0.341	-	-			0.000	0.000	0.000		0.393	-	-	0.000	0.000	0.000		0.501	-	-			0.100			
11.000	0.000	0.000	0.000		0.023	-	-	0.000	0.000	0.000		0.080	-	-			0.000	0.000	0.000		1.20	-	-	0.000	0.000	0.000		1.24	-	-			0.110			
12.000	0.000	0.000	0.000		0.001	-	-	0.000	0.000	0.000		0.013	-	-			0.000	0.000	0.000		2.19	-	-	0.000	0.000	0.000		2.19	-	-			0.120			
13.000	0.000	0.000	0.000		0.001	-	-	0.000	0.000	0.000		0.001	-	-			0.000	0.000	0.000		3.19	-	-	0.000	0.000	0.000		3.19	-	-			0.130			
14.000	0.000	0.000	0.000		0.001	-	-	0.000	0.000	0.000		0.001	-	-			0.000	0.000	0.000		4.19	-	-	0.000	0.000	0.000		4.19	-	-			0.140			
15.000	0.000	0.000	0.000		0.001	-	-	0.000	0.000	0.000		0.001	-	-			0.000	0.000	0.000		5.19	-	-	0.000	0.000	0.000		5.19	-	-			0.150			
16.000	0.000	0.000	0.000		0.001	-	-						-	-			0.000	0.000	0.000		6.19	-	-				-	-					0.160			
17.000	0.000	0.000	0.000		0.001	-	-						-	-			0.000	0.000	0.000		7.19	-	-				-	-					0.170			
18.000	0.000	0.000	0.000		0.001	-	-						-	-			0.000	0.000	0.000		8.19	-	-				-	-					0.180			
Totals:						0	0						0	0	0	0							0	0							0	0	0	0		
Number of Trades:						0							0		0								0.00						0			0				

PIRAEUS BANK (CR)

(Contract Size: 100 Securities, Exercise Style: American, Physical Delivery)

Call Options																	Put Options																	
December 2018							January 2019							Other Months			December 2018							January 2019							Other Months			
Exerise Price	Open price	Price max	Price min	Last price	Closing price	Volume	Open Interest	Open price	Price max	Price min	Last price	Closing price	Volume	Open Interest	Volume	Open Interest	Open price	Price max	Price min	Last price	Closing price	Volume	Open Interest	Open price	Price max	Price min	Last price	Closing price	Volume	Open Interest	Volume	Open Interest	Exerise Price	
0.700	0.000	0.000	0.000		0.243	-	-	0.000	0.000	0.000		0.249	-	-			0.000	0.000	0.000		0.002	-	-	0.000	0.000	0.000		0.007	-	-			0.007	
0.750	0.000	0.000	0.000		0.197	-	-	0.000	0.000	0.000		0.206	-	-			0.000	0.000	0.000		0.005	-	-	0.000	0.000	0.000		0.013	-	-			0.008	
0.800	0.000	0.000	0.000		0.154	-	-	0.000	0.000	0.000		0.167	-	-			0.000	0.000	0.000		0.012	-	-	0.000	0.000	0.000		0.024	-	-			0.008	
0.850	0.000	0.000	0.000		0.116	-	-	0.000	0.000	0.000		0.132	-	-			0.000	0.000	0.000		0.024	-	-	0.000	0.000	0.000		0.039	-	-			0.009	
0.900	0.000	0.000	0.000		0.083	-	-	0.000	0.000	0.000		0.102	-	-			0.000	0.000	0.000		0.042	-	-	0.000	0.000	0.000		0.060	-	-			0.009	
0.950	0.000	0.000	0.000		0.058	-	-	0.000	0.000	0.000		0.078	-	-			0.000	0.000	0.000		0.067	-	-	0.000	0.000	0.000		0.085	-	-			0.010	
1.000	0.000	0.000	0.000		0.039	-	50	0.000	0.000	0.000		0.057	-	-			0.000	0.000	0.000		0.098	-	-	0.000	0.000	0.000		0.115	-	-			0.010	
1.100	0.000	0.000	0.000		0.016	-	180	0.000	0.000	0.000		0.031	-	-			0.000	0.000	0.000		0.174	-	-	0.000	0.000	0.000		0.188	-	-			0.011	
1.200	0.000	0.000	0.000		0.005	-	46	0.000	0.000	0.000		0.015	-	-			0.000	0.000	0.000		0.264	-	4	0.000	0.000	0.000		0.272	-	-			0.012	
1.300	0.000	0.000	0.000		0.002	-	-	0.000	0.000	0.000		0.007	-	-			0.000	0.000	0.000		0.361	-	-	0.000	0.000	0.000		0.365	-	-			0.013	
1.400	0.000	0.000	0.000		0.001	-	-	0.000	0.000	0.000		0.003	-	-			0.000	0.000	0.000		0.460	-	-	0.000	0.000	0.000		0.461	-	-			0.014	
1.500	0.000	0.000	0.000		0.001	-	-	0.000	0.000	0.000		0.001	-	-			0.000	0.000	0.000		0.560	-	-	0.000	0.000	0.000		0.560	-	-			0.015	
1.600	0.000	0.000	0.000		0.001	-	60	0.000	0.000	0.000		0.001	-	-			0.000	0.000	0.000		0.660	-	-	0.000	0.000	0.000		0.660	-	-			0.016	
1.700	0.000	0.000	0.000		0.001	-	-	0.000	0.000	0.000		0.001	-	-			0.000	0.000	0.000		0.760	-	-	0.000	0.000	0.000		0.760	-	-			0.017	
1.800	0.000	0.000	0.000		0.001	-	-	0.000	0.000	0.000		0.001	-	-			0.000	0.000	0.000		0.860	-	-	0.000	0.000	0.000		0.860	-	-			0.018	
1.900	0.000	0.000	0.000		0.001	-	-						-	-			0.000	0.000	0.000		0.960	-	-				-	-			0.019			
2.000	0.000	0.000	0.000		0.002	-	-						-	-			0.000	0.000	0.000		1.06	-	-				-	-			0.020			
2.200	0.000	0.000	0.000		0.001	-	20						-	-			0.000	0.000	0.000		1.26	-	-				-	-			0.022			
2.400	0.000	0.000	0.000		0.001	-	-						-	-			0.000	0.000	0.000		1.46	-	-				-	-			0.024			
2.600	0.000	0.000	0.000		0.003	-	-						-	-			0.000	0.000	0.000		1.66	-	-				-	-			0.026			
2.800	0.000	0.000	0.000		0.001	-	-						-	-			0.000	0.000	0.000		1.86	-	-				-	-			0.028			
3.000	0.000	0.000	0.000		0.004	-	-						-	-			0.000	0.000	0.000		2.06	-	-				-	-			0.030			
3.200	0.000	0.000	0.000		0.002	-	-						-	-			0.000	0.000	0.000		2.26	-	-				-	-			0.032			
3.400	0.000	0.000	0.000		0.001	-	-						-	-			0.000	0.000	0.000		2.46	-	-				-	-			0.034			
3.600	0.000	0.000	0.000		0.001	-	-						-	-			0.000	0.000	0.000		2.66	-	-				-	-			0.036			
3.800	0.000	0.000	0.000		0.001	-	-						-	-			0.000	0.000	0.000		2.86	-	-				-	-			0.038			
4.000	0.000	0.000	0.000		0.001	-	-						-	-			0.000	0.000	0.000		3.06	-	-				-	-			0.040			
4.400	0.000	0.000	0.000		0.001	-	-						-	-			0.000	0.000	0.000		3.46	-	-				-	-			0.044			
4.800	0.000	0.000	0.000		0.001	-	-						-	-			0.000	0.000	0.000		3.86	-	-				-	-			0.048			
5.200	0.000	0.000	0.000		0.001	-	-						-	-			0.000	0.000	0.000		4.26	-	-				-	-			0.052			
5.600	0.000	0.000	0.000		0.001	-	-						-	-			0.000	0.000	0.000		4.66	-	-				-	-			0.056			
Totals:						0	356						0	0	0	20						0	4					0	0	0	0			
Number of Trades:						0							0		0							0.00					0		0					

PPC (CR)

(Contract Size: 100 Securities, Exercise Style: American, Physical Delivery)

Call Options																Put Options																				
December 2018								January 2019								Other Months		December 2018								January 2019								Other Months		
Exerise Price	Open price	Price max	Price min	Last price	Closing price	Volume	Open Interest	Open price	Price max	Price min	Last price	Closing price	Volume	Open Interest	Volume	Open Interest	Open price	Price max	Price min	Last price	Closing price	Volume	Open Interest	Open price	Price max	Price min	Last price	Closing price	Volume	Open Interest	Volume	Open Interest	Exerise Price			
0.850	0.000	0.000	0.000		0.342	-	-	0.000	0.000	0.000		0.346	-	-			0.000	0.000	0.000		0.001	-	-	0.000	0.000	0.000		0.003	-	-			0.009			
0.900	0.000	0.000	0.000		0.293	-	-	0.000	0.000	0.000		0.299	-	-			0.000	0.000	0.000		0.001	-	-	0.000	0.000	0.000		0.006	-	-			0.009			
0.950	0.000	0.000	0.000		0.245	-	-	0.000	0.000	0.000		0.254	-	-			0.000	0.000	0.000		0.004	-	-	0.000	0.000	0.000		0.011	-	-			0.010			
1.000	0.000	0.000	0.000		0.200	-	-	0.000	0.000	0.000		0.213	-	-			0.000	0.000	0.000		0.009	-	-	0.000	0.000	0.000		0.020	-	-			0.010			
1.100	0.000	0.000	0.000		0.122	-	-	0.000	0.000	0.000		0.142	-	-			0.000	0.000	0.000		0.030	-	-	0.000	0.000	0.000		0.048	-	-			0.011			
1.200	0.000	0.000	0.000		0.065	-	100	0.000	0.000	0.000		0.088	-	-			0.000	0.000	0.000		0.073	-	-	0.000	0.000	0.000		0.094	-	-			0.012			
1.300	0.000	0.000	0.000		0.030	-	-	0.000	0.000	0.000		0.051	-	-			0.000	0.000	0.000		0.138	-	-	0.000	0.000	0.000		0.157	-	-			0.013			
1.400	0.000	0.000	0.000		0.012	-	-	0.000	0.000	0.000		0.027	-	-			0.000	0.000	0.000		0.220	-	-	0.000	0.000	0.000		0.234	-	-			0.014			
1.500	0.000	0.000	0.000		0.005	-	20	0.000	0.000	0.000		0.014	-	-			0.000	0.000	0.000		0.313	-	-	0.000	0.000	0.000		0.321	-	-			0.015			
1.600	0.000	0.000	0.000		0.001	-	-	0.000	0.000	0.000		0.007	-	-			0.000	0.000	0.000		0.410	-	-	0.000	0.000	0.000		0.414	-	-			0.016			
1.700	0.000	0.000	0.000		0.001	-	-	0.000	0.000	0.000		0.003	-	-			0.000	0.000	0.000		0.510	-	-	0.000	0.000	0.000		0.511	-	-			0.017			
1.800	0.000	0.000	0.000		0.001	-	-	0.000	0.000	0.000		0.002	-	-			0.000	0.000	0.000		0.610	-	-	0.000	0.000	0.000		0.610	-	-			0.018			
1.900	0.000	0.000	0.000		0.001	-	-	0.000	0.000	0.000		0.001	-	-			0.000	0.000	0.000		0.710	-	-	0.000	0.000	0.000		0.710	-	-			0.019			
2.000	0.000	0.000	0.000		0.001	-	-						-	-			0.000	0.000	0.000		0.810	-	-					-	-			0.020				
2.200	0.000	0.000	0.000		0.001	-	-						-	-			0.000	0.000	0.000		1.01	-	-					-	-			0.022				
2.400	0.000	0.000	0.000		0.001	-	-						-	-			0.000	0.000	0.000		1.21	-	-					-	-			0.024				
2.600	0.000	0.000	0.000		0.001	-	-						-	-			0.000	0.000	0.000		1.41	-	-					-	-			0.026				
2.800	0.000	0.000	0.000		0.001	-	-						-	-			0.000	0.000	0.000		1.61	-	-					-	-			0.028				
3.000	0.000	0.000	0.000		0.001	-	-						-	-			0.000	0.000	0.000		1.81	-	-					-	-			0.030				
3.200	0.000	0.000	0.000		0.001	-	-						-	-			0.000	0.000	0.000		2.01	-	-					-	-			0.032				
3.400	0.000	0.000	0.000		0.001	-	-						-	-			0.000	0.000	0.000		2.21	-	-					-	-			0.034				
3.600	0.000	0.000	0.000		0.001	-	-						-	-			0.000	0.000	0.000		2.41	-	-					-	-			0.036				
3.800	0.000	0.000	0.000		0.001	-	-						-	-			0.000	0.000	0.000		2.61	-	-					-	-			0.038				
4.000	0.000	0.000	0.000		0.001	-	-						-	-			0.000	0.000	0.000		2.81	-	-					-	-			0.040				
4.400	0.000	0.000	0.000		0.001	-	-						-	-			0.000	0.000	0.000		3.21	-	-					-	-			0.044				
Totals:						0	120						0	0	0	0						0	0					0	0	0	0					
Number of Trades:						0							0		0							0.00						0		0						

Lending Products	Underlying Title	Multilateral Transactions[1]					Bilateral Transactions[2]		Stock Borrowing through OTC (volume)[3]
		Open Interest[5]	Volume(Offered)	Average Weighted	Transactions volume	Average Weighted	Transactions Volume	Average Weighte	Transactions Volume
ADMIEBOR	ADMIE (IPTO) HOLDING S.A. (CR)	---	41,822	5.31%	---	---	---	---	1,828
AEGNBOR	AEGEAN AIRLINES (CR)	995	12,097	5.31%	---	---	---	---	11,912
ALPHABOR	ALPHA BANK (CR)	20,001	80,248	5.31%	---	---	---	---	30,467,518
ALMYBOR	ALUMIL (CR)	---	---	---	---	---	---	---	---
TATTBOR	ATTICA BANK S.A. (CR)	8,819	7,304	5.31%	---	---	---	---	370
EEEBOR	CC HBC AG (CR)	3,329	67	5.31%	---	---	---	---	70,546
CENERBOR	CENERGY HOLDINGS (CB)	2,600	46,000	5.31%	---	---	---	---	---
ELLAKTORBOR	ELLAKTOR (CR)	1,000	83,118	5.31%	---	---	---	---	---
EUROBBOR	EUROBANK ERGASIAS (CR)	142,429	74,151	5.31%	---	---	---	---	53,288,449
EYDAPBOR	EYDAP S.A. (CR)	---	4,246	5.31%	---	---	---	---	82,799
FFGRPBOR	FOLLI FOLLIE (CR)	---	---	---	---	---	---	---	1,363,949
FOYRKBOR	FOURLIS (CR)	8,958	90	3.33%	---	---	---	---	4,650
GEKTERNABOR	GEK TERNA (CR)	---	32,432	5.31%	---	---	---	---	1,293
SARBOR	GR. SARANTIS S.A. (CR)	452	7	5.36%	---	---	---	---	390
EUPROBOR	GRIVALIA PROPERTIES (CR)	---	102,574	5.31%	---	---	---	---	48,262
EXAEBOR	HELLENIC EXCHANGES-A.S.E. (CR)	8,000	537,389	5.31%	---	---	---	---	150,065
ELPEBOR	HELLENIC PETROLEUM (CR)	8,339	123,909	3.31%	---	---	---	---	65,719
INTRKBOR	INTRACOM HOLDINGS (CR)	---	58,170	5.31%	---	---	---	---	---
INLOTBOR	INTRALOT (CR)	1,300	59,526	5.31%	---	---	---	---	284,512
BELABOR	JUMBO SA (CR)	19,900	104,182	5.31%	---	---	---	---	53,350
LAMDABOR	LAMDA DEVELOPMENT SA (CR)	---	619	5.31%	---	---	---	---	10,399
MIGBOR	MARFIN INVESTMENT GROUP (CR)	---	293,633	5.31%	---	---	---	---	744,474
MOHBOR	MOTOR OIL (CR)	18,611	19,054	3.31%	316	2.65%	---	---	253,308
MYTILBOR	MYTILINEOS HOLDINGS (CR)	1,500	155,988	5.31%	---	---	---	---	18,086
ETEBOR	NATIONAL BANK (CR)	5,000	89,360	5.31%	---	---	---	---	6,714,623
OPAPBOR	OPAP (CR)	3,010	150,108	3.31%	---	---	---	---	1,007,199
HTOBOR	OTE (CR)	10,350	100,583	3.31%	5,000	2.65%	---	---	544,315
PPABOR	P.P.A. S.A. (CR)	1,854	807	3.31%	---	---	---	---	2,901
TPEIRBOR	PIRAEUS BANK (CR)	7,122	2,311	5.31%	---	---	---	---	23,621,004
PLAISBOR	PLAISIO COMPUTERS SA (CR)	---	---	---	---	---	---	---	---
PPCBOR	PPC (CR)	1,000	132,457	5.31%	---	---	---	---	6,477,732

Stock Lending Notes

- [1] - Multilateral contracts Lending or Borrowing as per Methods 8-1, 8-2 and 8-3-3 (According to ATHEX BoD Resolution No.17)
- [2] - Billateral Contracts Lending or Borrowing as per Methods 8-3-1 and 8-3-2 (According to ATHEX BoD Resolution No.20)
- [3] - The information concerning OTC Stock Borrowing Transactions is based on the statements of the Dematerialised Securities System (DSS) operators involved and refers to volumes that have been registered up until the previous working day.
- [4] - Average Price (Volume weighted)
- [5] - The Data concerning Open Interest before the start of trading session

Lending Products	Underlying Title	Multilateral Transactions[1]					Bilateral Transactions[2]		Stock Borrowing through OTC (volume)[3]
		Open Interest[5]	Volume(Offered)	Average Weighted	Transactions volume	Average Weighted	Transactions Volume	Average Weighted	Transactions Volume
QUALBOR	QUALITY & RELIABILITY SA (CR)	---	---	---	---	---	---	---	---
TENERGYBOR	TERNA ENERGY (CR)	1,931	25,175	5.31%	---	---	---	---	127,536
TITKBOR	TITAN CEMENT (CR)	8,978	95,825	3.31%	400	2.65%	---	---	22,666
VIOBOR	VIOHALCO SA/NV (CB)	33,420	36,847	5.31%	---	---	---	---	---

Stock Lending Notes

[1] - Multilateral contracts Lending or Borrowing as per Methods 8-1, 8-2 and 8-3-3 (According to ATHEX BoD Resolution No.17)

[2] - Bilateral Contracts Lending or Borrowing as per Methods 8-3-1 and 8-3-2 (According to ATHEX BoD Resolution No.20)

[3] - The information concerning OTC Stock Borrowing Transactions is based on the statements of the Dematerialised Securities System (DSS) operators involved and refers to volumes that have been registered up until the previous working day.

[4] - Average Price (Volume weighted)

[5] - The Data concerning Open Interest before the start of trading session

Sectors codification for listed companies

533	-	Exploration & Production	537	-	Integrated Oil & Gas
1353	-	Commodity Chemicals	1357	-	Specialty Chemicals
1753	-	Aluminum	1755	-	Nonferrous Metals
1757	-	Steel	1775	-	General Mining
2353	-	Building Materials & Fixtures	2357	-	Heavy Construction
2723	-	Containers & Packaging	2727	-	Diversified Industrials
2733	-	Electrical Components & Equipment	2753	-	Commercial Vehicles & Trucks
2757	-	Industrial Machinery	2773	-	Marine Transportation
2777	-	Transportation Services	2791	-	Business Support Services
2797	-	Industrial Suppliers	3535	-	Distillers & Vintners
3537	-	Soft Drinks	3573	-	Farming Fishing & Plantations
3577	-	Food Products	3722	-	Durable Household Products
3726	-	Furnishings	3728	-	Home Construction
3747	-	Toys	3763	-	Clothing & Accessories
3765	-	Footwear	3767	-	Personal Products
3785	-	Tobacco	4533	-	Health Care Providers
4535	-	Medical Equipment	4577	-	Pharmaceuticals
5337	-	Food Retailers & Wholesalers	5371	-	Apparel Retailers
5373	-	Broadline Retailers	5375	-	Home Improvement Retailers
5379	-	Specialty Retailers	5553	-	Broadcasting & Entertainment
5555	-	Media Agencies	5557	-	Publishing
5751	-	Airlines	5752	-	Gambling
5753	-	Hotels	5755	-	Recreational Services
5757	-	Restaurants & Bars	5759	-	Travel & Tourism
6535	-	Fixed Line Telecommunications	6575	-	Mobile Telecommunications
7535	-	Conventional Electricity	7537	-	Alternative Electricity
7577	-	Water	8355	-	Banks
8534	-	Insurance Brokers	8536	-	Property & Casualty Insurance
8633	-	Real Estate Holding & Development	8637	-	Real Estate Services
8671	-	Industrial & Office REITs	8674	-	Diversified REITs
8675	-	Specialty REITs	8775	-	Specialty Finance
8777	-	Investment Services	8985	-	Equity Investment Instruments
9533	-	Computer Services	9535	-	Internet
9537	-	Software	9572	-	Computer Hardware
9574	-	Electronic Office Equipment	9578	-	Telecommunications Equipment
12003	-	ETF			



ATHEX
Athens Stock Exchange

Λεωφ. Αθηνών 110 104 42 Αθήνα
110, Athinon Ave. GR 104 42 Athens
tel. (+30)210-33.66.800, fax (+30)210-33.66.101
www.athexgroup.gr