

22

Ημερήσιο Δελτίο
Συναλλακτικής Δραστηριότητας

Daily Official List
of Trading Activity

Monday, 19 December, 2022
Year: 143 Trading Day No: 240



ATHEXGROUP
Athens Exchange Group

Disclaimer:

Hellenic Exchanges-Athens Stock Exchange S.A. endeavours to ensure that the data and other material ("Information") presented on the Daily Official List are accurate and complete, but it is not liable for any errors or omissions of data or /and for the accuracy, credibility, updating and completeness of the aforesaid information nor it has any liability arising directly or indirectly from the use of the above Information.

The Company is not liable for the accuracy of the data included in listed companies' announcements. Only the sender of such an announcement is fully and solely liable for any infringement of third party's rights from the content of such announcement. All contents of the Daily Official List are provided only for information purposes and do not constitute investment advice or solicitation to invest in securities or other products listed for trading on the Exchange.

You acknowledge and agree that the Company is the owner of any property rights related to any Information appearing on the Daily Official List including intellectual property rights copyright, trademarks, etc.

The above data are a property of the Hellenic Exchanges-Athens Exchange and are copyright protected. Users are forbidden to reproduce, modify, copy, sale, transmit or redistribute, by all reproduction means and methods, part or the whole of the above data, without reference to their source.

The commercial exploitation of these data is, also, forbidden by third parties. Hellenic Exchanges-Athens Exchange does not carry any responsibility, direct or indirect, derived from usage or accidental alteration of the above data when used by third parties.

Hellenic Exchanges – Athens Stock Exchange S.A.

110 Athinon Ave., 10442 Athens, Tel: (210) 33.66.800, Fax: (210) 32.13.938

www.athexgroup.gr

Thessalonica Stock Exchange Center (T.S.E.C)

16-18 Katouni Str., Thessalonica 546 25 Tel: (2310) 567.667, Fax: (2310) 530.545

Athex Members Guarantee Fund

14-16 Fidiou Str., Athens 106 78, Tel: (210) 33.04.682, Fax: (210) 33.04.155

Hellenic Republic Capital Market Commission

1 Kolokotroni Str. & 1 Stadiou Str., Athens 10562 Tel: (210) 33.77.100 Fax: (210) 33.77.173

Table of Contents

Section 1: Statistical Figures of Securities, Derivatives and Lending

Summary of Markets

Athex Indices

Analytic Figures for Athex Market's Boards and Categories

Trading Details by Athex Sectors and Financial Instruments (ETFs)

Top 10 best & worst performing Shares

Derivatives Summary

Section 2: Analytic Figures of Shares Transactions

Analytic Figures of Shares Transactions

Shares' Notes

Section 3: Figures of Securities Transactions

Securities Blocks Details

Shares Rights Details

Stock Borrowing

Forced Sales Details

Forced Sales Registered Shares

Exchange Traded Funds (ETFs) Characteristics

Section 5: Bonds traded in Fixed Income Assets Market

Convertible Corporate Bonds - Regulated Market

Non Convertible Corporate Bonds - Regulated Market

Government Bonds

Treasury Bills & Zero Coupon Government Bonds

Government Bonds Traded with the Open Outcry Method

State Banks Bonds

Section 6: Additional Infos

Athex & ATHEXClear Members List

List of Stocks under Market Making operations

Section 7: Derivatives Market Analytic Figures

Index Futures

Stock Futures

Index Options

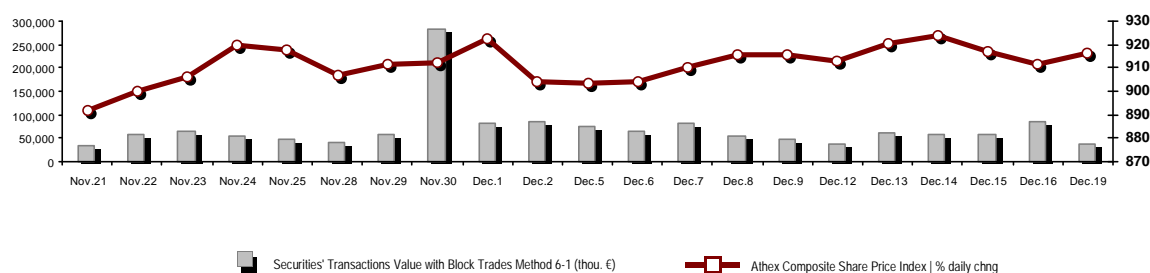
Stock Options

Stock Lending Analytic Figures

Appendix A: Sectors codification for listed companies

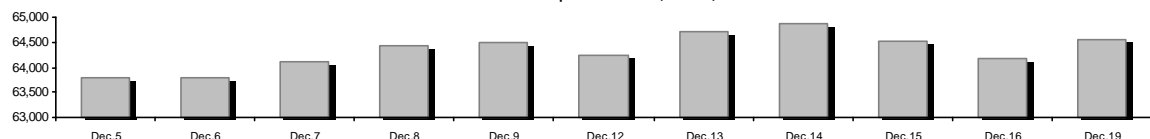
Summary of Markets

Athex Composite Share Price Index vs Shares and Derivatives Transactions Value

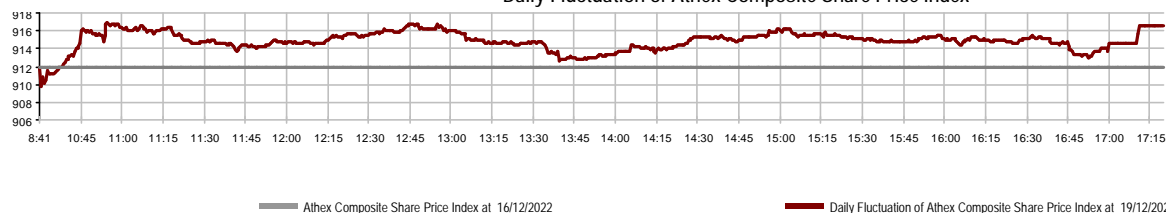


Athex Capitalisation (mill. €) **:	64,561.35		Derivatives Total Open Interest	321,496
Daily change: mill. € %	377.56	0.59%	in Index Futures % daily chng	4,557 -22.88%
Yearly Avg Capitalisation: mill. € % chng prev year Avg	62,999.07	3.47%	in Stock Futures % daily chng	316,089 -22.67%
Athex Composite Share Price Index % daily chng	916.48	0.51%	in Index Options % daily chng	569 -68.74%
Athex Composite Share Price Index Capitalisation (mill. €)	58,232.24		in Stock Options % daily chng	281 -68.14%
Daily change (mill. €)	204.48			
Securities' Transactions Value with Block Trades Method 6-1 (t	37,550.68		Derivatives Contracts Volume:	6,197
Daily change: %	-48,522.66	-56.37%	Daily change: pieces %	-59,475 -90.56%
YtD Avg Trans. Value: thou. € % chng prev year Avg	73,417.59	5.11%	YtD Avg Derivatives Contracts % chng prev year Avg	35,253 -26.04%
Blocks Transactions Value of Method 6-1 (thou. €)	2,960.50		Derivatives Trades Number:	666
Blocks Transactions Value of Method 6-2 & 6-3 (thou. €)	1.53		Daily change: number %	-2,089 -75.83%
Bonds Transactions Value (thou.€)	1,073.21		YtD Avg Trades number % chng prev year Avg	2,103 -0.61%
Securities' Transactions Volume with Block Trades Method 6-1 (tho	13,295.70		Lending Total Open Interest	834,487
Daily change: thou. pieces %	-17,663.78	-57.05%	Daily change: pieces %	94,600 12.79%
YtD Avg Volume: % chng prev year Avg	28,753.70	-15.92%	Lending Volume (Multilateral/Bilateral)	194,287
Blocks Transactions Volume of Method 6-1 (thou. Pieces)	650.00		Daily change: pieces %	-15,313
Blocks Transactions Volume of Method 6-2 & 6-3 (thou. Pieces)	42.00		Multilateral Lending	185,687
Bonds Transactions Volume	1,131,000		Bilateral Lending	8,600
Securities' Trades Number with Block Trades Method 6-1	16,033		Lending Trades Number:	21
Daily change: number %	-8,669	-35.09%	Daily change: %	-13
YtD Avg Trades number % chng prev year Avg	29,877	-0.19%	Multilateral Lending Trades Number	19
Number of Blocks Method 6-1	3		Bilateral Lending Trades Number	2
Number of Blocks Method 6-2 & 6-3	1			
Number of Bonds Transactions	169			

Athex Capitalisation (mill. €) **



Daily Fluctuation of Athex Composite Share Price Index



Athex Indices

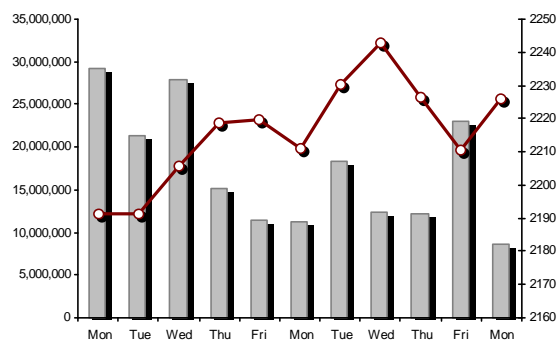
Index name	19/12/2022	16/12/2022	pts.	%	Min	Max	Year min	Year max	Year change
Athex Composite Share Price Index	916.48 #	911.85	4.63	0.51%	909.72	916.85	778.84	973.27	2.59% #
Athex ESG Index	1,045.02 #	1,038.05	6.97	0.67%	1,035.31	1,045.02	867.88	1,131.24	3.12% #
FTSE/Athex Large Cap	2,226.07 #	2,210.36	15.71	0.71%	2,204.37	2,226.07	1,853.39	2,384.15	3.59% #
FTSE/Athex Mid Cap Index	1,392.27 €	1,395.73	-3.46	-0.25%	1,387.08	1,404.72	1,236.94	1,615.19	-6.68% €
FTSE/ATHEX High Dividend Yield Index	3,012.26 €	3,014.84	-2.58	-0.09%	3,002.06	3,025.78	2,690.12	3,292.03	-2.96% €
FTSE/ATHEX Global Traders Index Plus	2,573.82 €	2,575.75	-1.93	-0.07%	2,557.26	2,584.51	2,117.30	2,605.69	8.45% #
FTSE/ATHEX Mid & Small Cap Factor-Weighted Ind	4,315.19 €	4,358.32	-43.13	-0.99%	4,282.67	4,368.04	3,920.25	5,109.62	-7.57% €
ATHEX Select Index Plus	3,067.74 €	3,072.16	-4.42	-0.14%	3,056.39	3,093.52	2,745.11	3,578.04	-9.38% €
ATHEX Select Index	4,174.64 #	4,164.19	10.45	0.25%	4,146.22	4,205.36	3,901.01	4,953.99	-8.99% €
FTSE/Athex Market Index	533.40 #	529.51	3.89	0.73%	528.30	533.40	454.86	586.15	-0.51% €
Athex Composite Index Total Return Index	1,617.67 #	1,609.49	8.18	0.51%	1,605.74	1,618.33	1,354.79	1,673.61	5.52% #
FTSE/Athex Large Cap Total Return	3,560.28 #	3,535.15	25.13	0.71%			2,917.53	3,702.87	6.52% #
FTSE/Athex Mid Cap Total Return	1,832.46 €	1,837.01	-4.55	-0.25%			1,640.21	2,064.38	-4.43% €
Hellenic Mid & Small Cap Index	1,351.72 €	1,353.82	-2.10	-0.16%	1,346.41	1,358.37	1,171.10	1,451.84	-1.55% €
FTSE/Athex Banks	632.41 #	624.71	7.70	1.23%	623.81	633.74	443.16	752.66	10.00% #
FTSE/Athex Insurance	2,980.92 ~	2,980.92	0.00	0.00%	2,935.06	3,042.07	1,994.86	3,171.11	49.43% #
FTSE/Athex Financial Services	676.19 €	677.54	-1.35	-0.20%	668.13	687.06	605.58	831.60	-9.73% €
FTSE/Athex Industrial Goods & Services	4,441.29 €	4,485.88	-44.59	-0.99%	4,397.37	4,485.88	3,065.29	4,581.41	19.01% #
FTSE/Athex Retail	877.15 €	879.14	-1.99	-0.23%	872.60	887.12	713.86	1,150.20	-10.89% €
FTSE/ATHEX Real Estate	4,006.61 #	4,000.19	6.42	0.16%	3,967.23	4,021.74	3,592.38	5,179.83	-16.74% €
FTSE/Athex Consumer Goods & Services	9,058.32 #	9,021.33	36.99	0.41%	8,903.92	9,092.67	7,260.09	9,226.02	24.77% #
FTSE/Athex Food & Beverage	8,442.99 #	8,294.88	148.11	1.79%	8,294.88	8,458.12	6,627.16	12,058.75	-25.50% €
FTSE/Athex Basic Resources	6,524.63 €	6,638.96	-114.33	-1.72%	6,508.52	6,729.42	5,372.63	8,197.29	-11.80% €
FTSE/Athex Construction & Materials	3,058.30 #	3,045.56	12.74	0.42%	3,029.95	3,081.99	2,533.53	3,209.28	2.67% #
FTSE/Athex Energy	4,892.95 #	4,833.13	59.82	1.24%	4,773.55	4,892.95	3,339.51	4,953.87	42.09% #
FTSE/Athex Travel & Leisure	2,211.68 €	2,220.97	-9.29	-0.42%	2,203.01	2,224.10	1,858.00	2,327.38	12.66% #
FTSE/Athex Technology	2,020.14 €	2,033.22	-13.08	-0.64%	2,014.11	2,051.01	1,679.98	2,347.72	-5.90% €
FTSE/Athex Telecommunications	4,148.33 #	4,096.25	52.08	1.27%	4,074.01	4,148.63	3,925.29	5,170.21	-8.74% €
FTSE/Athex Utilities	4,576.54 #	4,551.34	25.20	0.55%	4,527.80	4,580.45	3,692.82	5,208.71	-11.15% €
FTSE/Athex Health Care	381.53 #	360.02	21.51	5.97%	352.09	387.19	305.68	611.35	-30.94% €
FTSE/Athex Personal Products	6,744.38 #	6,608.92	135.46	2.05%	6,608.92	6,750.31	5,953.26	8,868.58	-22.69% €
Athex All Share Index	227.35 #	226.04	1.31	0.58%	227.35	227.35	198.92	248.43	-1.18% €
Hellenic Corporate Bond Index	118.65 €	118.79	-0.14	-0.12%			116.21	127.89	-7.14% €
Hellenic Corporate Bond Price Index	86.09 €	86.19	-0.11	-0.12%			84.74	95.40	-9.75% €

Note 1: FTSE/Med 100, Hellenic Corporate Bond Price Index and Hellenic Corporate Bond Index closing prices refer to the previous trading day of 15/12/2022.

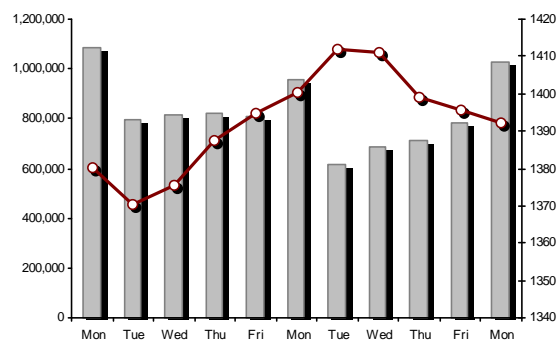
Note 2: The Hellenic Mid & Small Cap Index is a Customized index calculated by the Athens Exchange.

Athex Indices

FTSE/Large Cap

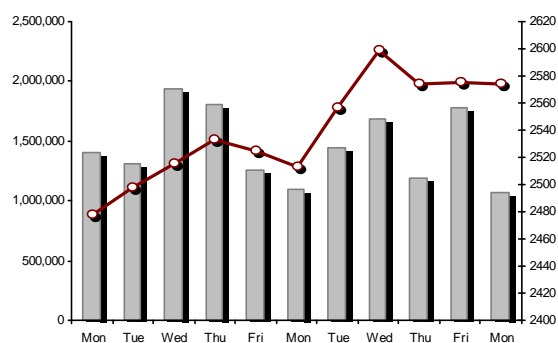


19/12/2022: 0.71% FTSE/Athex Mid Cap Index

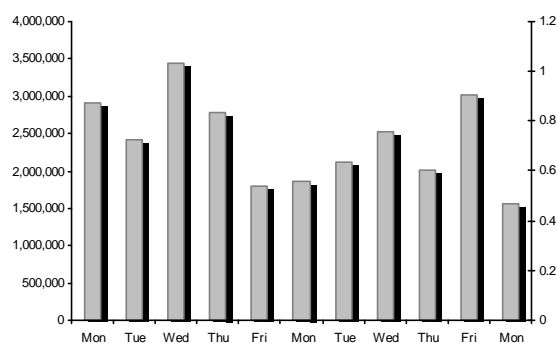


19/12/2022: -0.25%

FTSE/ATHEX Global Traders Index Plus

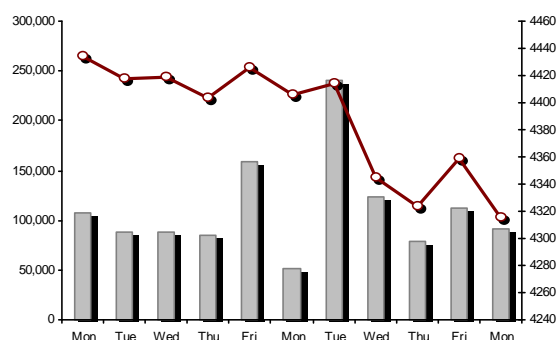


19/12/2022: -0.07% FTSE/ATHEX Global Traders Index

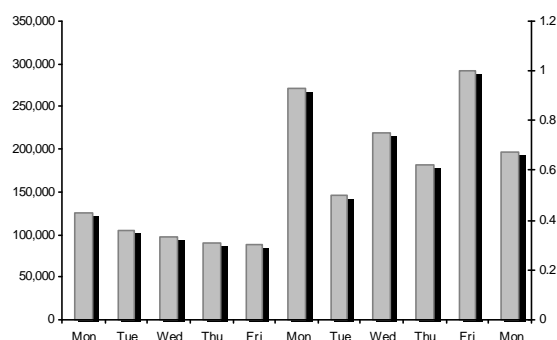


FTSE/ATHEX Mid & Small Cap Factor-Weighted Index

19/12/2022: -0.99%



ATHEX Mid & SmallCap Price Index



Indices volume of transactions

Indices closing prices

Analytic Figures for Athex Market's Boards and Categories

	Total Traded Securities	Main Market	Surveillance	Exchange Traded Funds (ETFs)
Totals	114	103	11	0
Gain / Lose / Same:	53 / 36 / 25	49 / 36 / 18	4 / 0 / 7	0 / 0 / 0
Athex Capitalisation (mill. €) **	64,561.35	64,141.53	419.82	
Daily Average Trans/ons Value(thou.€)	73,417.59	73,287.40	186.16	16.27
Transactions Value	37,552.21	37,251.98	300.23	0.00
Main Board:	34,590.18	34,289.95	300.23	0.00
Blocks Board 6_2_3:	2,962.03	2,962.03	0.00	0.00
Forced Sales Board:	0.00	0.00	0.00	0.00
Special Terms Board:	0.00	0.00	0.00	0.00
Daily Average Transactions Volume	28,753,705	28,071,927	702,639	785
Transactions Volume	13,337,701	11,801,070	1,536,631	0
Main Board:	12,645,701	11,109,070	1,536,631	0
Blocks Board 6_2_3:	692,000	692,000	0	0
Forced Sales Board:	0	0	0	0
Special Terms Board:	0	0	0	0
Daily Average Number of Trades	29,877	29,669	206	2
Number of Trades	16,034	15,753	281	0
Main Board:	16,030	15,749	281	0
Blocks Board 6_2_3:	4	4	0	0
Forced Sales Board:	0	0	0	0
Special Terms Board:	0	0	0	0

Trading Details by Athex Sectors and Financial Instruments (ETFs)

Code	Sectors	Gain / Lose / Same	Number of Trades	Transactions Volume	Transactions Value	% of Total Trans. Value
3010	- Banks	4 / 1 / 1	4,011	6,761,585	10,029,288.64	26.71%
5510	- Basic Resources	3 / 8 / 2	685	207,842	667,611.44	1.78%
5010	- Construction & Materials	7 / 2 / 5	1,209	598,334	3,467,956.74	9.24%
4020	- Consumer Products & Services	4 / 2 / 1	715	192,457	1,382,286.40	3.68%
6010	- Energy	2 / 2 / 0	1,403	265,665	4,568,600.02	12.17%
12000	- Financial Instruments	0 / 0 / 0	---	---	---	---
3020	- Financial Services	1 / 2 / 2	439	1,447,418	193,907.64	0.52%
4510	- Food Beverage & Tobacco	2 / 2 / 3	110	44,007	175,128.41	0.47%
2010	- Health Care	2 / 0 / 1	111	29,856	30,001.04	0.08%
5020	- Industrial Goods & Service	5 / 8 / 3	2,020	455,308	3,840,467.51	10.23%
3030	- Insurance	0 / 0 / 1	4	213	819.34	0.00%
4030	- Media	0 / 0 / 0	---	---	---	---
4520	- Personal Care, Drug & Grocery Stores	3 / 0 / 0	129	22,605	112,201.41	0.30%
3510	- Real Estate	5 / 0 / 4	420	209,144	913,321.97	2.43%
4040	- Retail	3 / 1 / 0	270	113,311	364,632.91	0.97%
1010	- Technology	4 / 4 / 0	448	259,496	704,581.03	1.88%
1510	- Telecommunications	1 / 1 / 0	1,139	295,072	4,086,726.66	10.88%
4050	- Travel & Leisure	3 / 2 / 2	1,434	1,898,988	4,152,305.23	11.06%
6510	- Utilities	4 / 1 / 0	1,487	536,400	2,862,368.65	7.62%

Top 10 best & worst performing Shares

Main Market					
With positive Price change	Closing price	change	With negative Price change	Closing price	change
ATTICA HOLDINGS (CR)	1.485	10.00% #	SPACE HELLAS SA (CR)	5	-4.58% €
INFORM P. LYKOS (CR)	1.96	7.69% #	KTIMA KOSTAS LAZARIDIS SA (CR)	1.48	-4.52% €
MEDICON S.A (CR)	3.37	5.97% #	CENERGY HOLDINGS (CB)	3.05	-3.02% €
PAPOUTSANIS (CR)	2.28	3.64% #	VIOHALCO SA/NV (CB)	4.015	-2.79% €
MPLK KEDROS (CR)	2.17	2.36% #	QUEST HOLDINGS (CR)	4.67	-2.30% €
MOTOR OIL (CR)	21.1	2.33% #	REVOIL (CR)	1.245	-1.58% €
TECHNICAL OLYMPIC SA (CR)	1.765	2.02% #	HELLENIQ ENERGY (CR)	7.5	-1.44% €
EYDAP S.A. (CR)	6.69	1.98% #	CENTRIC HOLDINGS (CR)	0.287	-1.03% €
GR. SARANTIS S.A. (CR)	6.68	1.83% #	THRACE PLASTICS SA (CR)	3.93	-1.01% €
CC HBC AG (CR)	22.53	1.81% #	MYTILINEOS (CR)	19.33	-0.97% €
With the highest Transactions Value	Value (thou. €)	change	With the highest Transactions Volume	Volume	change
MOTOR OIL (CR)	4,145.71	2.33% #	EUROBANK HOLDINGS (CR)	2,243,483	1.57% #
OTE (CR)	3,935.55	1.29% #	ALPHA SERVICES HOLD (CR)	2,041,418	0.73% #
NATIONAL BANK (CR)	3,814.70	1.43% #	MARFIN INVESTMENT GROUP (CR)	1,406,866	-0.44% €
OPAP (CR)	3,533.66	-0.38% €	PIRAEUS FINANCIAL HOLD (CR)	1,340,614	0.99% #
MYTILINEOS (CR)	3,043.18	-0.97% €	NATIONAL BANK (CR)	1,025,148	1.43% #
GEK TERNA (CR)	2,699.02	0.71% #	ADMIE (IPTO) HOLDING S.A. (CR)	286,765	-0.23% €
EUROBANK HOLDINGS (CR)	2,321.96	1.57% #	GEK TERNA (CR)	269,453	0.71% #
ALPHA SERVICES HOLD (CR)	2,033.08	0.73% #	OPAP (CR)	267,651	-0.38% €
PIRAEUS FINANCIAL HOLD (CR)	1,837.07	0.99% #	OTE (CR)	265,472	1.29% #
JUMBO SA (CR)	1,211.40	0.38% #	MOTOR OIL (CR)	199,115	2.33% #

Note: Stocks that are not included in the "Under Supervision" category, and the transactions value is more than 10,000 €.

Derivatives Summary

	Number of Trades	Volume	Open Interest
Index Futures	57	169	4,557
FTSE/Athex Banks	0	0	6
FTSE/Athex Large Cap	57	169	4,551
Stock Futures	592	5,962	316,089
ADMIE (IPTO) HOLDING S.A. (CR)	8	15	7,591
ALPHA SERVICES HOLD (CR)	64	1,529	139,058
CC HBC AG (CR)	6	7	532
CENERGY HOLDINGS (CB)	9	90	5,283
ELLAKTOR (CR)	0	0	531
EUROBANK HOLDINGS (CR)	26	359	16,003
EYDAP S.A. (CR)	9	25	438
FOURLIS (CR)	1	1	994
GEK TERNA (CR)	70	318	8,856
HELLENIC EXCHANGES-A.S.E. (CR)	9	44	1,147
HELLENIQ ENERGY (CR)	10	37	1,036
INTRACOM HOLDINGS (CR)	1	2	3,261
JUMBO SA (CR)	18	30	482
LAMDA DEVELOPMENT SA (CR)	20	63	5,562
MARFIN INVESTMENT GROUP (CR)	34	1,601	17,882
MOTOR OIL (CR)	8	13	684
MYTILINEOS (CR)	10	28	1,447
NATIONAL BANK (CR)	52	248	15,269
OPAP (CR)	1	5	1,074
OTE (CR)	31	164	6,484
P.P.A. S.A. (CR)	1	2	505
PIRAEUS FINANCIAL HOLD (CR)	70	831	46,210
PPC (CR)	75	377	23,532
TERNA ENERGY (CR)	36	105	6,947
TITAN CEMENT (CB)	0	0	935
VIOHALCO SA/NV (CB)	23	68	4,346
Index Options	2	3	569
FTSE/Athex Large Cap	2	3	569
Stock Options	15	63	281
ALPHA SERVICES HOLD (CR)	0	0	30
NATIONAL BANK (CR)	0	0	0
OPAP (CR)	7	25	6
OTE (CR)	7	35	85
PIRAEUS FINANCIAL HOLD (CR)	0	0	70
PPC (CR)	1	3	90
Total Derivatives Traded	666	6,197	321,496

Number of Outstanding Securities	Nominal Value	Dividends [1]			Date of Last Coupon		Note	Shares	Closing price	% change	Previous closing price/date	Open price	Price min	Price max	Last price	Avg price	Last Bid [7]	Last Ask [7]	P/E after tax	Year	Volume	Trades	Transactions Value[8]	Company Mkt Value (thou. €)	Year low	Year high	Sector[4]
		2019	2020	2021	Dividend [2]	Right																					

Main Market - High Liquidity Class

2,348,207,784	0.290	---	---	---	07/04/2008	18/04/2017	---	ALPHA SERVICES HOLD (CR)	0.9938	0.73	P	0.9866	16/12/2022	0.9866	0.9866	1.008	0.9938	0.996	4189@0.992	3134@0.994	---	---	2,041,418	1,156	2,033,080.90	2,333,648.90	0.73	1.456	30101010
190,162,681		---	---	---		07/12/2016	---	CENERGY HOLDINGS (CB)	3.05	-3.02	E	3.145	16/12/2022	3.145	3.05	3.17	3.05	3.095	1200@3.05	11@3.06	---	---	111,785	323	346,014.09	579,996.18	2.325	4.08	50202010
371,809,001	6.70	(0.6196)	0.64	0.71	07/07/2022	29/04/2013	---	CC HBC AG (CR)	22.53	1.81	P	22.13	16/12/2022	22.46	22.27	22.57	22.53	22.494	36@22.45	50@22.57	---	---	4,674	63	105,138.85	8,376,856.79	17.6	32.22	45101020
3,710,677,508	0.220	---	---	---	02/05/2008	20/05/2019	---	EUROBANK HOLDINGS (CR)	1.037	1.57	P	1.021	16/12/2022	1.021	1.021	1.046	1.037	1.035100000@1.04	8342@1.04	---	---	2,243,483	1,000	2,321,963.17	3,847,972.58	0.711	1.159	30101010	
52,131,944	1.00	---	---	0.1102	30/06/2022	23/07/2019	---	FOURLIS (CR)	3.295	-0.60	E	3.315	16/12/2022	3.29	3.275	3.35	3.295	3.312	10@3.27	2424@3.29	---	---	100,251	211	332,026.11	171,774.76	2.44	4.525	40401010
305,635,185	2.18	0.5	0.1	0.1	01/11/2022	01/10/2003	---	HELLENIQ ENERGY (CR)	7.5	-1.44	E	7.61	16/12/2022	7.52	7.49	7.6	7.5	7.514	3230@7.49	1466@7.54	---	---	54,194	310	407,188.51	2,292,263.89	5.81	7.85	60101020
136,059,759	0.880	0.442	0.77	0.77	09/12/2022	05/03/2014	---	JUMBO SA (CR)	15.8	0.38	P	15.74	16/12/2022	15.51	15.43	15.87	15.8	15.752	40@15.71	24396@15.80	---	---	76,904	518	1,211,395.40	2,149,744.19	12.47	16.12	40203045
176,736,715	0.300	---	---	---	30/05/2007	27/11/2019	---	LAMDA DEVELOPMENT SA (CR)	5.8	0.17	P	5.79	16/12/2022	5.785	5.725	5.83	5.8	5.796	6@5.80	461@5.81	---	---	126,455	253	732,990.92	1,025,072.95	5.1	7.5	35101010
939,510,748	0.100	---	---	---	26/04/2007	29/08/2014	---	MARFIN INVESTMENT GROUP (CR)	0.0449	-0.44	E	0.0451	16/12/2022	0.0462	0.0435	0.048	0.0449	0.04610000@0.044	42000@0.045	---	---	1,406,866	250	64,781.90	42,184.03	0.021	0.05	30202000	
107,222,688	0.440	---	---	#####	17/06/2022	16/03/2022	---	QUEST HOLDINGS (CR)	4.67	-2.30	E	4.78	16/12/2022	4.78	4.665	4.8	4.67	4.735	300@4.65	592@4.66	---	---	21,992	67	104,140.66	500,729.95	3.945	6.6667	10101010
78,325,475		---	---	---		23/07/2019	---	TITAN CEMENT (CB)	12.18	-0.33	E	12.22	16/12/2022	12.32	12.14	12.32	12.18	12.18	1000@12.16	1536@12.18	---	---	39,430	127	480,264.50	954,004.29	10.64	14.94	50101030
259,189,761		0.01	0.02	0.1	03/06/2022	26/02/2016	---	VIOHALCO SA/INV (CB)	4.015	-2.79	E	4.13	16/12/2022	4.13	4.015	4.21	4.015	4.149	3531@4.02	1331@4.10	---	---	127,932	368	530,755.32	1,040,646.89	3.19	5.13	55102015
232,000,000	2.12	0.0889	0.1069	0.0854	29/08/2022	19/06/2017	---	ADMIE (IPTO) HOLDING S.A. (CR)	1.716	-0.23	E	1.72	16/12/2022	1.71	1.706	1.738	1.716	1.716	200@1.71	500@1.72	11.39	2021	286,765	373	492,221.38	398,112.00	1.58	2.605	65101015
90,167,100	0.500	---	---	---	03/06/2019	24/05/2021	---	AEGEAN AIRLINES (CR)	5.26	-0.94	E	5.31	16/12/2022	5.14	5.14	5.33	5.26	5.285	279@5.26	122@5.28	---	---	21,848	123	115,463.58	474,278.95	4.4	6.35	40501010
103,423,291	0.570	---	---	---	01/08/2011	06/09/2022	---	GEK TERNA (CR)	10	0.71	P	9.93	16/12/2022	9.81	9.81	10.2	10	10.017	800@9.98	69@10.04	---	---	269,453	529	2,699,023.54	1,034,232.91	7.98	10.6	50101010
382,000,000	2.48	---	---	---	20/07/2015	12/12/2001	---	PPC (CR)	6.55	0.31	P	6.53	16/12/2022	6.53	6.48	6.575	6.55	6.532	148@6.53	6633@6.55	---	---	174,299	538	1,138,437.66	2,502,100.00	4.76	9.48	65101015
914,715,153	1.00	---	---	---	16/05/2008	29/08/2018	---	NATIONAL BANK (CR)	3.753	1.43	P	3.7	16/12/2022	3.68	3.68	3.756	3.753	3.721	3390@3.73	1559@3.75	---	---	1,025,148	945	3,814,696.53	3,432,925.97	2.541	4.115	30101010
375,241,586	0.390	0.03	0.01	0.03	30/05/2022	14/07/2006	---	ELVALHALCOR (CR)	1.638	-0.73	E	1.65	16/12/2022	1.658	1.624	1.666	1.638	1.647	70@1.63	2191@1.64	---	---	63,028	201	103,794.84	614,645.72	1.26	2.1	55102015
348,192,005	0.040	---	---	---	05/07/2011	16/07/2021	---	ELLAKTOR (CR)	1.71	1.67	P	1.682	16/12/2022	1.678	1.674	1.71	1.71	1.695	2300@1.68	300@1.72	---	---	72,544	160	122,973.86	595,408.33	1.172	1.932	50101010
106,500,000	0.600	0.38	---	0.28	05/09/2022	13/09/2021	---	EYDAP S.A. (CR)	6.69	1.98	P	6.56	16/12/2022	6.56	6.56	6.69	6.69	6.647	500@6.62	252@6.69	---	---	20,497	181	136,236.58	712,485.00	6.56	8.15	65102030
110,782,980	0.750	1.1507	---	0.9054	21/11/2022	04/11/2013	---	MOTOR OIL (CR)	21.1	2.33	P	20.62	16/12/2022	20.36	20.36	21.1	21.1	20.821	139@20.96	619@21.10	---	---	199,115	1,055	4,145,713.38	2,337,520.88	12.81	21.42	60101020
142,891,161	0.970	0.3617	0.378	0.4341	24/06/2022	07/07/2017	---	MYTILINEOS (CR)	19.33	-0.97	E	19.52	16/12/2022	19.33	19.13	19.49	19.33	19.268	282@19.26	1057@19.33	---	---	157,937	1,090	3,043,176.68	2,762,086.14	12.68	20	50203000
25,000,000	2.00	0.5388	0.4	0.628	25/07/2022	08/08/2003	---	P.P.A. S.A. (CR)	15.82	-0.50	E	15.9	16/12/2022	16.04	15.66	16.04	15.82	15.86	3067@15.82	500@15.84	10.76	2021	8,844	89	140,264.50	395,500.00	13.82	17.98	50206060
363,341,859	0.300	0.3	0.55	0.6	19/10/2022	29/07/2022	---	OPAP (CR)	13.2	-0.38	E	13.25	16/12/2022	13.25	13.15	13.28	13.2	13.202	7793@13.19	6777@13.20	---	---	267,651	1,056	3,533,656.69	4,796,112.54	11.7231	14.6938	40501020
433,664,596	2.83	0.5554	0.6879	0.8231	01/07/2022	18/06/1998	---	OTE (CR)	14.87	1.29	P	14.68	16/12/2022	14.61	14.6	14.87	14.87	14.825	50@14.85	5689@14.87	---	---	265,472	912	3,935,554.56	6,448,592.54	14.05	18.5	15102015
1,250,367,223	0.930	---	---	---	16/05/2008	14/04/2021	---	PIRAEUS FINANCIAL HOLD (CR)	1.3735	0.99	P	1.36	16/12/2022	1.38	1.359	1.39	1.3735	1.37	13953@1.36	2731@1.37	---	---	1,340,614	855	1,837,067.41	1,717,379.38	0.71	1.723	30101010
43,741,452	0.660	0.0576	0.16	0.2723	30/05/2022	01/11/1999	---	THRACE PLASTICS SA (CR)	3.93	-1.01	E	3.97	16/12/2022	3.99	3.855	4	3.93	3.911	6@3.92	21@3.93	---	---	20,250	138	79,205.44	171,903.91	3.34	7.06	50203015
69,877,484	0.780	0.167	0.2239	0.1493	03/06/2022	13/06/2018	---	GR. SARANTIS S.A. (CR)	6.68	1.83	P	6.56	16/12/2022	6.67	6.6	6.7	6.68	6.641	121@6.65	425@6.69	---	---	14,145	59	93,939.73	466,781.59	5.68	8.96	45201020
115,855,090	0.300	0.3445	0.3407	0.3411	04/07/2022	05/03/2020	---	TERNA ENERGY (CR)	20.14	0.70	P	20	16/12/2022	19.99	19.87	20.28	20.14	20.122	610@20.10	5170@20.14	---	---	54,360	388	1,093,814.25	2,333,321.51	12.12	20.52	65101010

Main Market - Medium Liquidity Class

13,126,020	0.660	---	0.0837	0.1163	22/06/2022	04/09/2020	---	AS COMPANY SA (CR)	2.06	---	↘	2.06	16/12/2022	---	---	---	---	---	900@2.08	1049@2.11	---	---	---	---	---	27,039.60	1.905	2.4	40401030
3,114,144	0.360	0.4983	0.1558	0.3427	14/06/2022	02/06/2020	---	ALPHA TRUST (CR)	4.4	---	↘	4.4	16/12/2022	4.4	4.32	4.4	4.4	4.354	100@4.26	403@4.40	---	---	804	15	3,500.98	13,702.23	4.24	5.9	30202010
14,000,000	4.15	---	---	3.42	14/09/2022	29/06/1999	---	ALPHA REAL ESTATE SA(CR)	6.7	1.21	P	6.62	16/12/2022	6.6	6.6	6.7	6.7	6.684	100@6.60	65@6.70	---	---	310	11	2,072.00	93,800.00	6.2	12	35101015
1,495,678,391	0.070	---	---	---	04/06/2008	22/11/2021	---	ATTICA BANK S.A. (CR)	0.0713	-0.14	E	0.0714	16/12/2022	0.0714	0.07	0.0745	0.0713	0.071	1000@0.070	23500@0.071	---	---	110,007	37	7,789.83	106,641.87	0.063	0.1884	30101010
48,624,764	0.080	0.23	0.23	0.46	08/04/2022	05/12/2022	---	AUTOHELLAS SA (CR)	10.28	0.59	P	10.22	16/12/2022	10.28	10.18	10.42	10.28	10.261	80@10.18	182@10.28	---	---	10,155	93	104,199.52	499,862.57	8.17	12	40201040
151,654,947	0.040	---	---	---	01/07/2008	21/02/2020	---	AVE (CR)	0.514	---	↘	0.514	16/12/2022	---	---	---	---	---	12695@0.498	500@0.510	---	---	---	---	---	77,950.64	0.369	0.61	40301010
35,764,593	2.10	0.039	0.06	0.075	26/04/2022	25/11/2019	---	BRIQ PROPERTIES (CR)	1.9	0.26	P	1.895	16/12/2022	1.9	1.895	1.915	1.9	1.9	828@1.90	750@1.94	---	---	12,200	29	23,181.23	67,952.73	1.84	2.24	35102030

Number of Outstanding Securities	Nominal Value	Dividends [1]			Date of Last Coupon Dividend [2]		Note	Shares	Closing price	% change	Previous closing price/date	Open price	Price min	Price max	Last price	Avg price	Last Bid [7]	Last Ask [7]	P/E after tax	Year	Volume	Trades	Transactions Value[8]	Company Mkt Value (thou. €)	Year low	Year high	Sector[4]
101,123,806	0.360	---	---	---	22/07/2010	28/06/2011	---	CENTRIC HOLDINGS (CR)	0.287	-1.03 €	0.29 16/12/2022	0.285	0.285	0.292	0.287	0.289	2000@0.286	4990@0.288	---	---	71,502	41	20,639.04	29,022.53	0.234	0.329	40203040
784,500	10.00	0.35	---	0.3	24/05/2022	31/07/2018	---	CNL CAPITAL (CR)	7.2	1.41 P	7.1 16/12/2022	7.1	7.1	7.2	7.2	7.174	100@7.10	759@7.20	16.58	2021	250	11	1,793.40	5,648.40	6.75	9.05	30202010
10,104,300	0.300	---	---	---	06/10/2005	13/02/2002	---	CPI SA (CR)	0.618	1.31 P	0.61 16/12/2022	0.58	0.58	0.618	0.618	0.59	501@0.590	1160@0.618	---	---	3,250	18	1,916.68	6,244.46	0.54	0.845	10102030
18,680,300	0.050	---	---	---	06/07/2022		---	DIMAND (CR)	14.05	--- γ	14.05 16/12/2022	14.2	14	14.2	14	14.036	---	399@14.05	---	---	3,535	40	49,617.75	262,458.22	13.2	15.17	35101010
54,200,000	0.075	(0.0065)	---	0.035	19/07/2022	23/11/2021	---	EPSILON NET (CR)	6.54	0.31 P	6.52 16/12/2022	6.58	6.46	6.6	6.54	6.546	750@6.48	637@6.56	---	---	15,589	51	102,039.62	354,468.00	4.06	7.56	10101015
40,134,921	0.400	---	---	---	30/08/1993	05/12/2022	---	IDEAL HOLDINGS (CR)	3.44	-0.58 €	3.46 16/12/2022	3.46	3.44	3.5	3.44	3.493	300@3.43	2949@3.46	---	---	73,283	88	255,944.54	138,064.13	2.85	4.09	10102030
20,578,374	0.620	0.04	0.09	0.0853	21/06/2022	18/05/2015	---	INFORM P. LYKOS (CR)	1.96	7.69 P	1.82 16/12/2022	1.88	1.88	1.975	1.96	1.939	185@1.96	1400@1.97	---	---	58,053	170	112,589.46	40,333.61	1.385	1.975	50205030
83,600,000	0.880	---	---	---	03/07/2007	23/09/2022	---	INTRACOM HOLDINGS (CR)	1.696	-0.23 €	1.7 16/12/2022	1.72	1.692	1.744	1.696	1.72	2602@1.69	1650@1.71	---	---	118,167	158	203,213.37	141,785.60	1.27	1.94	10101010
75,053,899	0.300	---	---	---	12/08/2008	26/01/2022	---	INTRAKAT (CR)	1.428	0.99 P	1.414 16/12/2022	1.42	1.41	1.432	1.428	1.423	1550@1.43	300@1.44	---	---	20,947	62	29,799.84	107,176.97	1.336	2.57	50101010
4,740,000	0.860	---	---	---	14/03/2003		---	LOGISMOS S.A. (CR)	0.99	--- γ	0.99 16/12/2022	---	---	---	---	---	220@0.920	900@0.980	---	2021	---	---	---	4,692.60	0.882	1.17	10101015
4,419,616	1.58	---	---	---	21/07/2011	04/03/2015	---	MEDICON S.A (CR)	3.37	5.97 P	3.18 16/12/2022	3.12	3.11	3.42	3.37	3.24	100@3.27	329@3.37	---	---	4,994	53	16,179.93	14,894.11	2.7	5.4	20102010
468,700	1.71	2.24	3.42	03/05/2022	21/05/2004	---	---	MERMEREN KOMB. A.D. PR. (GDR)	43.2	0.47 P	43 16/12/2022	42	42	43.2	43.2	42.232	2@41.60	10@43.20	1.36	2021	56	6	2,365.00	20,247.84	41	60	55102000
87,127,162	0.500	---	---	---	21/05/2008	28/07/2021	---	PREMIA (CR)	1.105	--- γ	1.105 16/12/2022	1.1	1.1	1.115	1.105	1.103	1000@1.10	3389@1.11	---	---	34,676	62	38,233.07	96,275.51	1.015	1.8	35101010
24,027,832	0.230	0.0324	---	---	27/06/2022	08/06/2022	---	PROFILE SA (CR)	2.85	0.71 P	2.83 16/12/2022	2.83	2.83	2.87	2.85	2.853	1000@2.84	300@2.87	---	---	7,893	29	22,521.75	68,479.32	2.565	3.745	10101010
27,345,120	0.280	---	---	---	18/07/2005	26/02/2014	---	QUALITY & RELIABILITY SA (CR)	0.45	1.81 P	0.442 16/12/2022	0.47	0.44	0.47	0.45	0.454	2766@0.450	1000@0.459	---	---	17,537	22	7,962.21	12,305.30	0.35	0.534	10101010
57,434,884	1.31	---	---	---	05/06/2008	12/06/2009	---	REDS S.A. (CR)	2.48	--- γ	2.48 16/12/2022	2.48	2.48	2.48	2.48	2.48	426581@2.48	1000@2.60	---	---	1,100	1	2,728.00	142,438.51	1.78	2.49	35101010
6,456,530	1.08	0.065	0.0804	0.12	14/07/2022	02/08/2010	---	SPACE HELLAS SA (CR)	5	-4.58 €	5.24 16/12/2022	5.24	5	5.32	5	5.107	1300@4.98	20@5.10	---	---	29,600	227	151,172.10	32,282.65	5	10.8	15101010
15,627,315	0.290	---	---	---	16/11/1992	30/11/2022	---	UNIBIOS (CR)	0.622	2.81 P	0.605 16/12/2022	0.61	0.605	0.622	0.622	0.607	469@0.608	956@0.622	---	---	15,076	35	9,157.02	9,720.19	0.487	0.74	50204000
144,321,516	0.300	---	---	---	01/07/2011	22/01/2020	---	AVAX S.A. (CR)	0.735	0.69 P	0.73 16/12/2022	0.745	0.723	0.746	0.735	0.743	1629@0.730	1421@0.733	---	---	137,723	124	102,386.70	106,076.31	0.666	1.1	50101010
32,413,681	0.370	---	---	---	15/07/2009	11/05/2000	---	ALUMIL (CR)	2.08	1.22 P	2.055 16/12/2022	2.12	2	2.12	2.08	2.058	100@2.01	336@2.08	---	---	4,859	22	10,000.73	67,420.46	1.55	2.4	55102035
3,534,269	3.44	---	(0.4452)	0.6908	16/12/2022	19/07/2022	---	ANDROMEDA SA (CR)	5.85	--- γ	5.85 16/12/2022	5.9	5.8	5.9	5.8	5.825	50@5.55	20@5.80	3.03	2021	20	2	116.50	20,675.47	4.98	8.0544	30204000
18,810,000	0.400	---	---	---	08/07/2010	14/11/2007	---	VARVERIS - MODA BAGNO SA (CR)	0.658	1.23 P	0.65 16/12/2022	0.668	0.648	0.668	0.658	0.661	300@0.646	800@0.658	---	---	746	5	493.22	12,376.98	0.42	0.8	40401025
24,060,000	0.300	0.035	0.035	0.055	12/04/2022	01/07/2019	---	GEN. COMMERCIAL & IND.SA (CR)	1.18	-1.67 €	1.2 16/12/2022	1.185	1.18	1.19	1.18	1.186	908@1.18	495@1.19	9.71	2021	4,405	14	5,226.20	28,390.80	1.02	1.42	50205010
15,878,748	0.480	---	---	---	10/07/2006	22/03/2004	---	DOMIKI KRITIS SA (CR)	0.748	--- γ	0.748 16/12/2022	0.756	0.722	0.756	0.748	0.747	119@0.730	8@0.748	---	---	5,609	22	4,192.65	11,877.30	0.502	0.944	50101010
34,720,000	0.310	---	---	---	16/06/2010	01/08/2007	---	DROMEAS SA (CR)	0.315	-2.78 €	0.324 16/12/2022	0.3	0.3	0.315	0.315	0.3	1350@0.295	4998@0.315	---	---	3,020	7	906.30	10,936.80	0.268	0.445	40202015
11,250,000	0.520	---	---	0.0405	01/08/2022	09/11/2015	---	EKTER SA (CR)	1.315	0.38 P	1.31 16/12/2022	1.34	1.275	1.34	1.315	1.294	5@1.30	720@1.32	---	---	10,847	67	14,030.87	14,793.75	0.912	1.53	50101010
18,410,839	1.00	---	0.027	0.262	24/08/2022	10/09/2010	---	ELASTRON (CR)	2.25	-0.44 €	2.26 16/12/2022	2.21	2.21	2.25	2.25	2.231	545@2.23	5579@2.26	---	---	430	5	959.50	41,424.39	1.94	2.74	55102010
60,295,607	0.240	---	---	---	09/07/2007	01/07/2021	---	ELGEKA SA (CR)	0.407	2.78 P	0.396 16/12/2022	0.409	0.407	0.409	0.407	0.407	1500@0.381	149@0.406	---	---	301	12	122.53	24,540.31	0.3	0.52	45201010
19,864,886	5.60	0.672	0.672	0.672	05/05/2022	02/07/2008	---	BANK OF GREECE (CR)	16.05	--- γ	16.05 16/12/2022	16.05	16.05	16.1	16.05	16.056	184@16.05	40@16.10	---	---	915	18	14,690.80	318,831.42	14.75	19.14	30101010
60,348,000	0.420	0.07	0.07	0.1515	08/06/2022	04/08/2021	---	HELLENIC EXCHANGES-A.S.E. (CR)	3.14	-0.16 €	3.145 16/12/2022	3.16	3.11	3.175	3.14	3.134	1@3.14	2604@3.14	---	---	39,478	161	123,714.86	189,492.72	2.94	4.09	30202015
26,730,187	0.520	0.04	0.08	0.1	29/06/2022	01/08/2017	---	ELTON SA (CR)	2.22	0.91 P	2.2 16/12/2022	2.21	2.2	2.22	2.22	2.209	462@2.22	520@2.24	---	---	10,324	35	22,802.92	59,341.02	1.56	2.3	50205010
30,000,000	0.050	---	0.06	0.09	13/05/2022	11/06/2020	---	ENTERSOFT (CR)	3.87	-0.77 €	3.9 16/12/2022	3.97	3.8	3.97	3.87	3.833	455@3.80	80@3.87	---	---	1,785	15	6,842.20	116,100.00	3.14	6.04	10101015
36,300,000	1.12	0.268	0.223	0.2186	14/09/2022	12/12/2007	---	THESSALONIKA WATER & SEWERAGE	3.45	1.17 P	3.41 16/12/2022	3.46	3.45	3.47	3.45	3.463	500@3.40	95@3.45	---	---	479	7	1,658.78	125,235.00	3.26	4.76	65102030
14,833,480	0.300	---	---	---	02/06/2010	04/02/2022	---	EUROCONSULTANTS S.A. (CR)	0.588	-1.67 €	0.598 16/12/2022	0.6	0.58	0.6	0.588	0.586	2000@0.582	1125@0.588	---	---	12,300	13	7,210.95	8,722.09	0.468	0.696	50205020
114,320,400	0.100	---	---	0.01	26/11/2021	05/08/2019	---	IKTINOS HELLAS SA (CR)	0.4925	0.51 P	0.49 16/12/2022	0.497	0.482	0.497	0.4925	0.49	230@0.489	995@0.493	---	---	10,871	30	5,328.00	56,302.80	0.4555	0.82	50101035
8,226,132	0.450	---	---	---	15/05/2009	13/10/2014	---	ILYDA S.A. (CR)	1.155	--- γ	1.155 16/12/2022	---	---	---	---	---	100@1.14	597@1.15	22.10	2021	---	---	---	9,501.18	0.864	1.63	10101015
34,986,430	0.440	---	---	---	25/07/2008	23/02/2010	---	INTERWOOD-XYLEMPORIA (CR)	0.2	--- γ	0.2 16/12/2022	0.1975	0.1975	0.208	0.2	0.201	1000@0.198	1600@0.202	---	---	21,440	47	4,307.00	7,510.65	0.187	0.278	50101020
18,567,912	0.590	---	0.12	0.12	06/07/2022	26/01/2021	---	INTERLIFE G.C.I.(CR)	3.9	--- γ	3.9 16/12/2022	3.98	3.84	3.98	3.9	3.847	500@3.78	745@3.90	4.65	2021	213	4	819.34	72,414.86	3.24	5	30302025
8,424,900	0.500	---	---	---	12/07/2010	04/07/2019	---	INTERTECH SA (CR)	0.978	0.82 P	0.97 16/12/2022	0.97	0.95	0.978	0.978	0.965	170@0.950	933@0.978	62.90	2021	3,124	15	3,014.35	8,239.55	0.602	1.18	50205010

Number of Outstanding Securities	Nominal Value	Dividends [1]			Date of Last Coupon		Note	Shares	Closing price	% change	Previous closing		Open price	Price min	Price max	Last price	Avg price	Last Bid [7]	Last Ask [7]	P/E after tax	Year	Volume	Trades	Transactions Value[8]	Company Mkt Value (thou. €)	Year low	Year high	Sector[4]
		2019	2020	2021	Dividend [2]	Right					price/date																	
19,804,134	0.150	---	---	---	01/07/2004	06/11/2017	---	KEKROPS SA (CR)	0.923	2.56 P	0.9	16/12/2022	0.923	0.917	0.927	0.923	0.923	50@0.900	500@0.922	---	2021	3,550	11	3,276.70	18,279.22	0.82	2.56	35101010
40,219,218	0.260	---	---	---	29/08/2022	10/06/2019	---	KLOUKINAS - LAPPAS SA (CR)	0.484	-0.62 E	0.487	16/12/2022	0.487	0.466	0.487	0.484	0.474	791@0.466	639@0.484	---	---	6,956	24	3,294.73	19,466.10	0.466	0.726	50101010
21,224,340	0.420	---	0.0035	0.02	06/09/2022	25/04/2006	---	KORDELLOS BROS SA (CR)	0.46	1.32 P	0.454	16/12/2022	0.454	0.45	0.462	0.46	0.456	100@0.459	6200@0.460	2.25	2021	1,086	6	495.10	9,763.20	0.408	0.696	55102010
33,065,136	0.380	0.18	0.2	0.2001	18/08/2022	16/09/2013	---	KRI-KRI S.A. (CR)	6.36	---	6.36	16/12/2022	6.4	6.36	6.4	6.36	6.38	250@6.04	150@6.44	15.92	2021	2,610	15	16,651.80	210,294.26	4.88	8.84	45102020
7,595,160	0.600	---	---	---	10/09/2019	18/08/2010	---	KIRIAKOULIS SHIPPING SA (CR)	0.998	---	0.998	16/12/2022	---	---	---	---	---	260@0.982	100@1.02	---	---	---	---	---	7,579.97	0.94	1.66	40501015
29,250,000	0.360	0.02	0.02	0.0401	21/06/2022	25/04/2019	---	MOTODYNAMICS S.A. (CR)	2.05	0.99 P	2.03	16/12/2022	2.04	2.02	2.05	2.05	2.037	1000@2.02	901@2.05	---	---	5,087	20	10,364.24	59,962.50	1.79	2.43	40401030
32,188,050	1.04	---	---	---	21/07/2008	20/01/2000	---	MOUZAKIS (CR)	0.704	-3.82 E	0.732	16/12/2022	0.704	0.704	0.704	0.704	0.704	10@0.704	310@0.734	---	---	80	1	56.32	22,660.39	0.502	0.88	55101020
4,971,466	1.46	---	---	---	04/07/2007	08/10/2003	---	PAIRIS SA (CR)	0.85	1.19 P	0.84	16/12/2022	0.85	0.85	0.85	0.85	0.85	55@0.790	326@0.850	---	---	122	8	103.70	4,225.75	0.642	1.245	50203030
27,098,594	0.540	---	0.07	0.05	05/12/2022	14/01/2021	---	PAPOUTSANIS (CR)	2.28	3.64 P	2.2	16/12/2022	2.29	2.19	2.29	2.28	2.223	1@2.23	396@2.28	---	---	8,159	58	18,139.15	61,784.79	2.19	2.99	45201020
7,070,400	0.930	0.1013	0.1081	0.3242	17/06/2022	06/05/2016	---	PETROPOULOS PETROS (CR)	5.5	---	5.5	16/12/2022	5.4	5.36	5.52	5.52	5.47	140@5.42	132@5.52	---	---	6,654	55	36,396.22	38,887.20	4.72	8.5	50206015
22,075,665	0.330	0.02	0.05	0.1	21/06/2022	23/11/2021	---	PLAISIO COMPUTERS SA (CR)	3.02	1.00 P	2.99	16/12/2022	3.01	2.99	3.03	3.02	3.009	394@3.02	50@3.03	---	---	7,227	34	21,749.34	66,668.51	2.81	4.17	40401010
21,912,599	0.300	---	---	---	11/04/2011	23/02/2007	---	REVOIL (CR)	1.245	-1.58 E	1.265	16/12/2022	1.25	1.24	1.275	1.245	1.247	500@1.24	650@1.26	---	---	11,868	36	14,805.09	27,281.19	1.03	1.39	60101020
13,582,223	1.35	---	---	---	24/06/2008	02/02/2016	---	SIDMA STEEL (CR)	1.855	-0.54 E	1.865	16/12/2022	1.865	1.845	1.885	1.845	1.856	100@1.85	500@1.87	---	---	6,424	28	11,925.70	25,195.02	1.755	3.14	55102010
40,693,350	5.00	---	---	---	03/07/2006	26/05/2015	---	TECHNICAL OLYMPIC SA (CR)	1.765	2.02 P	1.73	16/12/2022	1.73	1.71	1.77	1.77	1.756	56@1.73	150@1.77	---	---	25,376	51	44,562.89	71,823.76	1.398	2.03	40202010
3,048,000	0.300	---	---	---	06/07/2007	01/06/2021	---	TZIRAKIAN PROFIL (CR)	1.775	-0.28 E	1.78	16/12/2022	1.76	1.745	1.79	1.775	1.75	100@1.75	667@1.78	1.92	2021	765	8	1,339.10	5,410.20	1.65	3.18	55102010
10,203,575	0.730	---	---	---	16/07/2007	18/10/1999	---	FIERATEX SA (CR)	0.42	-2.10 E	0.429	16/12/2022	0.438	0.4	0.439	0.42	0.413	85@0.410	960@0.420	4.95	2021	648	15	267.87	4,285.50	0.4	0.726	55101020

Main Market - Low Liquidity Class

215,805,843	0.300	---	0.05	---	30/12/2021	15/11/2022	---	ATTICA HOLDINGS (CR)	1.485	10.00 P	1.35	16/12/2022	1.485	1.485	1.485	1.485	1.485	479234@1.49	---	---	---	---	145,968	40	216,762.48	320,471.68	0.804	1.485	40501015	
11,795,024	0.540	0.0632	0.087	0.136	04/07/2022	30/08/2019	---	FLEXOPACK SA (CR)	7.9	---	7.9	16/12/2022	---	---	---	---	---	500@7.60	65@7.85	---	---	---	---	---	---	93,180.69	5.7	7.95	50203030	
10,500,000	4.00	0.36	0.37	0.29	31/05/2022	02/08/2016	---	INTERCONTINENTAL (CR)	6.65	---	6.65	16/12/2022	6.6	6.6	6.65	6.65	6.604	680@6.40	765@6.70	---	---	---	438	3	2,892.70	69,825.00	6.25	7.25	35102000	
17,120,280	0.940	0.07	0.06	0.06	27/06/2022	02/08/2019	---	LOULIS FOOD (CR)	2.19	2.82 P	2.13	16/12/2022	2.18	2.12	2.19	2.19	2.132	800@2.11	365@2.19	---	---	---	505	11	1,076.65	37,493.41	1.96	2.7	45102020	
10,500,000	0.950	---	---	---	24/06/2008	22/07/2022	---	MEVACO SA (CR)	2.6	-0.76 E	2.62	16/12/2022	2.56	2.56	2.64	2.6	2.619	200@2.58	694@2.64	14.09	2021	2,084	17	5,458.86	27,300.00	1.89	2.86	55102015		
151,532,467	0.500	---	0.01	0.02	22/07/2022	10/06/2020	---	TRASTOR REAL EST. INV. CO.(CR)	0.98	---	0.98	16/12/2022	---	---	---	---	---	577@0.990	423@1.07	---	---	---	---	---	---	148,501.82	0.875	1.35	35102000	
15,300,000	0.300	---	---	---	30/07/2009	13/12/1999	---	ATTICA PUBLICATIONS SA (CR)	0.276	---	0.276	16/12/2022	---	---	---	---	---	2000@0.276	1000@0.302	---	---	---	---	---	---	4,222.80	0.274	0.474	40301030	
23,986,500	1.05	---	---	---	26/06/2009	15/03/2000	---	BIOKARPET S.A.(CR)	1.57	3.29 P	1.52	16/12/2022	1.57	1.56	1.58	1.57	1.572	40@1.52	253@1.57	---	---	---	1,240	11	1,949.53	37,658.81	1.31	1.88	50101035	
6,325,000	0.600	0.095	---	0.19	04/07/2022	17/02/2014	---	VOYATZOGLOU (CR)	2.2	---	2.2	16/12/2022	---	---	---	---	---	100@2.08	610@2.18	---	---	---	---	---	---	13,915.00	1.78	2.36	50205010	
15,000,000	0.300	---	---	---	06/07/2007	18/07/2000	---	DAIOS PLASTICS SA (CR)	2.94	---	2.94	16/12/2022	---	---	---	---	---	150@2.88	500@3.22	---	---	---	---	---	---	44,100.00	2.7	3.34	50203015	
13,673,200	0.880	---	---	---	18/07/2008	26/07/2001	---	EVROFARMA SA (CR)	0.72	-4.00 E	0.75	16/12/2022	0.72	0.72	0.72	0.72	0.72	400@0.720	80@0.738	---	---	---	1,930	5	1,389.60	9,844.70	0.598	0.98	45102020	
3,307,500	0.210	---	---	---	11/08/2010	30/11/2022	---	ELVE SA (CR)	4.76	---	4.76	16/12/2022	---	---	---	---	---	44@4.62	174@4.94	---	---	---	---	---	---	15,743.70	4.02	6.25	40204020	
23,828,130	0.500	---	---	0.0737	18/07/2022	17/02/2009	---	ELINOIL S.A. (CR)	1.83	1.10 P	1.81	16/12/2022	1.83	1.83	1.83	1.83	1.83	84@1.77	500@1.83	---	---	---	488	2	893.04	43,605.48	1.5	1.98	60101020	
86,735,980	0.310	---	---	---	06/07/2009	18/08/2022	---	ATHENS MEDICAL CENTER SA (CR)	1.43	---	1.43	16/12/2022	1.43	1.37	1.43	1.43	1.4	37@1.38	263@1.43	---	---	---	3,332	24	4,663.25	124,032.45	1.265	1.95	20101025	
2,566,836	0.440	---	---	0.016	15/07/2022	09/01/2007	---	INTERWOOD-XYLEMPORIA (PR)	0.2	---	0.2	16/12/2022	0.206	0.206	0.206	0.206	0.206	1000@0.193	3271@0.220	---	---	---	754	1	155.32	7,510.65	0.192	0.318	50101020	
2,760,000	11.83	9.4	9.4	11	14/06/2022	16/07/1990	---	KARELIA (CR)	286	---	286	16/12/2022	286	286	286	286	286	38@286.00	1@288.00	---	---	---	2	2	572.00	789,360.00	248	296	45103010	
6,700,000	0.800	0.191	0.179	0.047	24/08/2022	29/05/2014	---	MILLS KEPENOS (CR)	2.6	---	2.6	16/12/2022	---	---	---	---	---	200@2.34	300@2.64	26.27	2021	---	---	---	---	---	17,420.00	2.02	3.26	45102020
11,510,102	0.890	---	---	---	24/06/2005	06/10/1999	---	NAFPAKTOS TEXTILE (CR)	1	---	1	16/12/2022	---	---	---	---	---	50@0.952	75@1.04	---	---	---	---	---	---	---	11,510.10	0.805	1.37	55101020
18,017,472	0.360	---	---	---	09/09/2022	28/08/2017	---	KTIMA KOSTAS LAZARIDIS SA (CR)	1.48	-4.52 E	1.55	16/12/2022	1.45	1.45	1.48	1.48	1.474	753@1.48	30@1.52	---	---	---	34,104	13	50,272.21	26,665.86	1.41	1.95	45101015	
6,200,000	0.500	---	---	---	22/06/2010	01/11/1995	---	MINERVA KNITWEAR (CR)	0.474	---	0.474	16/12/2022	---	---	---	---	---	300@0.428	250@0.482	---	---	---	---	---	---	---	2,938.80	0.378	0.765	40204020
21,364,000	1.12	---	---	---	29/07/2019	10/08/2005	---	LAMPSA HOTEL SA (CR)	20.8	---	20.8	16/12/2022	20.8	20.8	20.8	20.8	20.8	100@20.80	100@21.80	---	---	---	15	1	312.00	444,371.20	19	22	40501025	

Number of Outstanding Securities	Nominal Value	Dividends [1]			Date of Last Coupon Dividend [2]		Note	Shares	Closing price	% change	Previous closing price/date	Open price	Price min	Price max	Last price	Avg price	Last Bid [7]	Last Ask [7]	P/E after tax	Year	Volume	Trades	Transactions Value[8]	Company Mkt Value (thou. €)	Year low	Year high	Sector[4]
5,939,268	0.620	---	---	---	10/07/2003	03/01/2002	---	LANAKAM SA (CR)	0.698	---	↘ 0.698	16/12/2022	---	---	---	---	300@0.640	260@0.716	---	---	---	---	---	4,145.61	0.66	1.2	40401020
9,819,370	0.500	---	---	---	14/08/2007	09/01/2004	---	MATHIOS REFRACTORY SA (CR)	0.595	---	↘ 0.595	16/12/2022	0.555	0.555	0.555	0.555	0.556 355@0.555	33@0.620	---	---	5	1	2.78	5,842.53	0.47	0.84	55101000
43,200,000	1.00	---	---	0.0824	07/09/2022	14/06/2022	---	MPLE KEDROS (CR)	2.17	2.36	↗ P	2.12 16/12/2022	2.17	2.17	2.17	2.17	2.17 200@2.16	920@2.17	---	---	26,880	10	58,329.60	93,744.00	1.95	2.258	35102000
8,321,682	0.670	---	---	---	17/08/2007	23/11/1999	---	N. LEVENTERIS (CR)	0.22	---	↘ 0.22	16/12/2022	---	---	---	---	1000@0.210	218@0.230	---	2021	---	---	---	2,375.22	0.204	0.4	50202010
2,160,524	0.670	---	---	---	03/12/2018	23/11/1999	---	N. LEVENTERIS (PR)	0.252	---	↘ 0.252	16/12/2022	---	---	---	---	---	790@0.268	---	2021	---	---	---	2,375.22	0.228	0.348	50202010
6,340,000	0.600	0.06	0.134	0.17	09/12/2022	05/01/2022	---	NAKAS MUSIC	2.3	---	↘ 2.3	16/12/2022	---	---	---	---	45@2.14	170@2.40	---	---	---	---	---	14,582.00	1.81	2.48	40401030
10,080,000	3.00	1.17	1.42	1.5	27/04/2022	27/08/2001	---	TPA SA (CR)	23.2	-0.43	↘ E	23.3 16/12/2022	23.5	23.1	23.5	23.2	23.206 124@23.20	6@23.40	11.64	2020	1,153	15	26,756.20	233,856.00	22.8	28.7	50206060
27,379,200	0.980	0.3654	---	---	03/07/2020	29/08/2022	---	CRETE PLASTICS SA (CR)	15.6	-4.29	↘ E	16.3 16/12/2022	15	15	15.6	15.6	15.129 134@15.60	50@16.00	---	---	306	4	4,629.60	427,115.52	13.4	19.9	50203015
255,494,534	2.71	0.613	0.352	0.279	14/12/2022	30/09/2021	---	PRODEA (CR)	8.7	---	↘ 8.7	16/12/2022	---	---	---	---	---	266@8.15	---	---	---	---	---	2,222,802.45	7.5	9.45	35102000
4,181,450	0.500	---	---	---	21/08/2000	05/03/2002	---	FLOUR MILLS SARANTOPOULOS SA	1.25	---	↘ 1.25	16/12/2022	---	---	---	---	---	---	---	---	---	---	---	5,226.81	0.99	1.69	45102020
8,340,750	1.16	---	---	---	25/06/2009	17/09/2018	---	HAIDEMENOS SA (CR)	0.496	---	↘ 0.496	16/12/2022	0.452	0.452	0.452	0.452	0.452 458@0.458	3000@0.500	18.37	2021	27	1	12.20	4,137.01	0.35	0.715	50205030

Exchange Traded Funds (ETFs)

906,928	---	---	---	---	15/06/2016	---	ALPHA ETF FTSE Athex Large Cap	22.38	---	↘ 22.38	16/12/2022	---	---	---	---	---	15@18.60	49@22.38	---	---	---	---	---	---	18.15	23.98	12003
---------	-----	-----	-----	-----	------------	-----	--------------------------------	-------	-----	---------	------------	-----	-----	-----	-----	-----	----------	----------	-----	-----	-----	-----	-----	-----	-------	-------	-------

Surveillance

356,314,416	0.060	---	---	---	07/07/2010	21/09/2017	5160	FRIGOGLASS SA (CR)	0.087	---	↘ 0.087	16/12/2022	0.0855	0.085	0.087	0.087	0.087 1000@0.084	21999@0.089	---	---	44,948	15	3,907.98	30,999.35	0.0755	0.192	50204000	
187,615,245	0.300	---	---	---	20/08/2007	28/11/2022	4912	LAVIPHARM SA (CR)	0.422	6.03	↗ P	0.398 16/12/2022	0.428	0.42	0.428	0.422	0.425 650@0.408	1599@0.422	---	---	21,530	34	9,157.86	79,173.63	0.3425	2.0664	20103015	
65,326,268	0.530	---	---	---	04/07/2007	19/07/2006	4750	SATO SA (CR)	0.017	---	↘ 0.017	16/12/2022	0.0185	0.0185	0.0185	0.0185	0.019 1000@0.019	---	---	---	3,500	1	64.75	1,110.55	0.013	0.08	40202015	
13,191,620	0.620	---	---	---	04/08/2010	09/09/2002	5232	YALCO - CONSTANTINOU (CR)	0.26	14.03	↗ P	0.228 16/12/2022	0.184	0.184	0.27	0.27	0.259 ---	1663@0.270	---	---	2,000	4	518.50	3,429.82	0.1	0.33	40202020	
13,000,000	1.00	---	---	---	01/08/2007	07/04/2000	5093	AKRITAS SA (CR)	0.456	---	↘ 0.456	16/12/2022	0.402	0.402	0.402	0.402	0.402 40@0.400	432@0.402	---	---	100	3	40.20	5,928.00	0.322	0.67	50101035	
221,519,681	0.300	---	---	---	02/07/2008	28/02/2011	4957	ANEK LINES SA (CR)	0.185	5.71	↗ P	0.175 16/12/2022	0.184	0.184	0.186	0.185	0.185 07000@0.184	9581@0.186	---	---	1,422,086	183	262,990.27	41,315.44	0.051	0.186	40501015	
312,163	0.300	---	---	---	02/07/2008	28/02/2011	4959	ANEK LINES SA (PR, issue '90)	0.072	---	↘ 0.072	16/12/2022	---	---	---	---	--- 17000@0.086	---	---	---	---	---	---	---	41,315.44	0.058	0.086	40501015
2,969,713	0.300	---	---	---	02/07/2008	28/02/2011	4958	ANEK LINES SA (PR, issue '96)	0.105	---	↘ 0.105	16/12/2022	0.12	0.12	0.12	0.12	0.1235000@0.126	---	---	---	47	1	5.64	41,315.44	0.08	0.126	40501015	
6,330,002	0.300	---	---	---	25/06/2002	15/03/2019	5162	VARVARESSOS (CR)	0.222	---	↘ 0.222	16/12/2022	---	---	---	---	---	---	---	2021	---	---	---	---	1,405.26	0.148	0.464	55101020
17,579,754	4.16	---	---	---	18/08/2006	02/08/2010	---	BIOTER SA (CR)	0.25	---	↘ 0.25	16/12/2022	---	---	---	---	--- 1500@0.210	100@0.238	---	---	---	---	---	---	4,394.94	0.2	0.59	50101010
4,968,600	0.050	---	---	---	01/07/1998	14/12/1998	5245	VIS SA (CR)	0.7	---	↘ 0.7	16/12/2022	---	---	---	---	--- 49@0.700	5000@0.800	---	2021	---	---	---	---	3,478.02	0.66	1.05	50203030
3,961,300	1.28	---	---	---	29/06/2004	03/08/2000	5248	DUROS SA (CR)	0.254	---	↘ 0.254	16/12/2022	---	---	---	---	---	1191@0.248	---	2021	---	---	---	---	1,006.17	0.172	0.398	40204020
51,754,364	0.300	---	---	---	23/12/2003	24/01/2007	5197	SELECTED TEXT. IND. ASSOC (CR)	0.11	---	↘ 0.11	16/12/2022	---	---	---	---	--- 9000@0.088	450@0.100	---	---	---	---	---	---	5,692.98	0.091	0.282	55101020
371,337,000	0.300	---	---	---	30/05/2013	01/07/2022	---	INTRALOT (CR)	0.56	0.90	↗ P	0.555 16/12/2022	0.56	0.555	0.56	0.56	0.559 6737@0.555	31918@0.560	---	---	41,373	30	23,114.57	207,948.72	0.438	0.755	40501020	
7,125,216	0.650	---	---	---	01/07/2005	14/12/1999	4955	KRE.KA SA (CR)	0.2	---	↘ 0.2	16/12/2022	---	---	---	---	--- 5410@0.180	3500@0.218	---	2021	---	---	---	---	1,425.04	0.09	0.304	45102010
7,734,375	1.00	---	---	---	09/07/2007	07/01/2011	5266	LIVANIS SA (CR)	0.15	---	↘ 0.15	16/12/2022	---	---	---	---	---	---	---	---	---	---	---	---	1,160.16	0.12	0.2	40301030
15,842,391	1.51	---	---	---	15/07/2009	12/05/2000	5141	BITROS HOLDING SA (CR)	0.47	---	↘ 0.47	16/12/2022	0.376	0.376	0.468	0.468	0.428 999@0.410	750@0.468	---	---	445	7	190.32	7,445.92	0.376	0.75	55102010	
24,319,250	0.300	---	---	---	09/07/2002	04/07/2007	5165	PROODEFTIKH SA (CR)	0.5	---	↘ 0.5	16/12/2022	0.5	0.5	0.5	0.5	0.5 580@0.505	530@0.580	---	---	420	2	210.00	12,159.63	0.24	0.65	50101010	
28,438,268	0.070	---	---	---	21/08/2006	24/11/1999	5253	SPIROY AGRICULTURE SA (CR)	0.154	---	↘ 0.154	16/12/2022	0.15	0.15	0.15	0.15	0.15 818@0.150	1093@0.170	---	---	182	1	27.30	4,379.49	0.129	0.256	45102010	
766,000	1.00	---	---	---	01/07/2004	11/12/2012	5193	TRIA ALFA SA (CR)	8.4	---	↘ 8.4	16/12/2022	---	---	---	---	---	200@7.80	65.33	2021	---	---	---	---	7,365.40	7.6	9.9	55101020
245,000	1.00	---	---	---	19/07/2010	11/12/2012	5194	TRIA ALFA SA (PR)	3.8	---	↘ 3.8	16/12/2022	---	---	---	---	--- 750@3.04	200@4.40	29.55	2021	---	---	---	---	7,365.40	2.5	6.7	55101020

Suspension Status

5,867,311	0.300	---	---	---	11/08/2010	28/04/2017	5243	DIONIC (CR)	0.11	---	↘ 0.11	30/06/2020	---	---	---	---	---	---	---	---	---	---	---	---	645.40	0.11	0.11	50205010
-----------	-------	-----	-----	-----	------------	------------	------	-------------	------	-----	--------	------------	-----	-----	-----	-----	-----	-----	-----	-----	-----	-----	-----	-----	--------	------	------	----------

Number of Outstanding Securities	Nominal Value	Dividends [1]			Date of Last Coupon		Note	Shares	Closing price	% change	Previous closing price/date		Open price	Price min	Price max	Last price	Avg price	Last Bid [7]	Last Ask [7]	P/E after tax	Year	Volume	Trades	Transactions Value[8]	Company Mkt Value (thou. €)	Year low	Year high	Sector[4]
66,948,210	0.300	---	---	---	22/09/2015	22/09/2015	5179	FOLLI FOLLIE (CR)	4.8	---	4.8	24/05/2018	---	---	---	---	---	---	---	---	---	---	---	---	321,351.41	4.8	4.8	40401030
12,417,000	0.310	---	---	---	27/08/2019	28/08/2017	5233	MLS MULTIMEDIA SA (CR)	0.57	---	0.57	12/05/2020	---	---	---	---	---	---	---	---	---	---	---	---	7,077.69	0.57	0.57	10101015
33,301,715	0.320	---	---	---	27/06/2003	08/07/2009	5241	AEGEK (CR)	0.035	---	0.035	25/06/2020	---	---	---	---	---	---	---	---	---	---	---	---	1,165.56	0.035	0.035	50101010
4,737,503	0.320	---	---	---	22/06/2005	22/09/2015	5115	VARANGIS AVEPE S.A. (CR)	0.11	---	0.11	02/03/2022	---	---	---	---	---	---	---	---	---	---	---	---	521.13	0.11	0.11	40202015
1,001,643	0.040	---	---	---	23/05/2005	17/08/2022	5206	G.E. DIMITRIOU (CR)	0.0125	---	0.0125	30/04/2019	---	---	---	---	---	---	---	---	---	---	---	---	12.52	0.0125	0.9625	40202020
7,085,888	1.59	---	---	---	02/07/1996	06/09/2010	5216	ELVIEMEK (CR)	2.6	---	2.6	30/09/2019	---	---	---	---	---	---	---	---	---	---	---	---	18,423.31	2.6	2.6	35101010
25,179,640	0.600	---	---	---	08/08/1994	19/09/2000	5191	J.BOUTARIS & SON (CR)	0.026	---	0.026	01/10/2018	---	---	---	---	---	---	---	---	---	---	---	---	742.45	0.026	0.026	45101015
1,540,000	0.600	---	---	---	08/08/1994	19/09/2000	5192	J.BOUTARIS & SON (PR)	0.057	---	0.057	01/10/2018	---	---	---	---	---	---	---	---	---	---	---	---	742.45	0.057	0.057	45101015

Shares' Notes

Code	Note text
()	- Adjusted dividends.
*	- Last adjusted closing price.
[1]	- Net dividends.
[2]	- The "Date of Last Coupon" for New listings refers to the date company's stocks started to trade in Athex
[3]	- The Company Market Value is referred to the number of outstanding shares
[4]	- Sectors codification can be found in Appendix A
[5]	- The Market Value refers to the total number of shares listed (including their several classes) in the exchange by the company.
[6]	- P/E greater than 100
[7]	- Last view of the Order Book before the end of the trading session
[8]	- All Blocks Methods' Transactions Value are included.
4750	- Transfer to the Under Surveillance Category from 8/4/2011.
4912	- Transfer to the Surveillance Category as of 31/7/2012.
4955	- Transfer to the Surveillance Category as from 5/4/2013.
4957	- Transfer to the Surveillance Category as from 5/4/2013.
4958	- Transfer to the Surveillance Category as from 5/4/2013.
4959	- Transfer to the Surveillance Category as from 5/4/2013.
5093	- Transfer to the Surveillance Category as of 8/4/2015.
5115	- Transfer to the Surveillance Category as of 15/04/2016.
5141	- Transfer to the Surveillance Category as of 10/05/2017.
5160	- Transfer to the Surveillance Category as of 15/04/2016.
5162	- Transfer to the Under Supervision Category as of 21/12/2009.
5165	- Transfer to the Surveillance Category as of 15/02/2018.
5179	- Suspension of trading as of 25/05/2018.
5191	- Suspension of trading as of 02/10/2018.
5192	- Suspension of trading as of 02/10/2018.
5193	- Transfer to the Surveillance Category as of 25/10/2018.
5194	- Transfer to the Surveillance Category as of 25/10/2018.
5197	- Transfer to the Surveillance Category as of 07/11/2018.
5206	- Suspension of trading as of 02/05/2019.
5216	- Suspension of trading as of 01/10/2019.
5232	- Transfer to the Under Surveillance Category from 08/04/2011.
5233	- Suspension of trading as of 13/05/2020.
5241	- Suspension of trading as of 26/06/2020.
5243	- Suspension of trading as of 01/07/2020.
5245	- Transfer to the Surveillance Category as of 09/07/2020.
5248	- Transfer to the Surveillance Category as of 06/09/20116.
5253	- Transfer to the Surveillance Category as of 14/5/2021.
5266	- Suspension of trading as of 04/05/2022.

Securities Blocks Details

Securities	Block Volume	Price	Block Trade Value	Time of approval	Note
NATIONAL BANK (CR)	500,000	3.71	1,855,000.00	11:13:56	20
AVAX S.A. (CR)	100,000	0.745	74,500.00	11:36:12	20
MOTOR OIL (CR)	50,000	20.62	1,031,000.00	11:46:35	20
MARFIN INVESTMENT GROUP (CR)	42,000	0.036	1,528.80	15:36:46	14

Blocks Notes

- 9 - Method 6-1 / Special Fees
- 10 - Method 6-1 / Special Fees, SDS
- 14 - Method 6-3 / Settlement, Incomplete Buy and Sell
- 18 - Method 6-2 / SPOT 1
- 19 - Method 6-2 / SPOT 2
- 20 - Method 6-1 and Method 6-1 Same Day Settlement
- 21 - Other Pre-agreed

Shares Rights Details

Occured date	Exercise from	Exercise until	Trading until	Rights	Price min	Price max	Closing price	Last Bid	Last Ask	Volume	Trades	Transactions Value
-----------------	------------------	-------------------	------------------	--------	--------------	--------------	------------------	----------	----------	--------	--------	-----------------------

No Rights Transactions.

Forced Sales Details

Securities	Category of Security	Transactions Volume	Number of Trades	Transactions Value	Note
No Forced Transactions.					

Forced Sales Notes

- 1 - Compulsory Public Forced Sales
- 2 - Forced Sales of Fixed Registered Shares
- 3 - Forced Sales of Remaining Fractional Shares

Forced Sales Registered Shares

Securities	Start Date	End Date	Initial Volume	Remaining Volume	Date	Avg price (day)	Avg price (period)	Number of Trades	Transactions Volume	Transactions Value
------------	------------	----------	----------------	------------------	------	-----------------	--------------------	------------------	---------------------	--------------------

No Fixed Registered Shares Forced Sales.

Forced Sales Notes

According to Decision 1/380/04.05.2008 of the Hellenic Republic Capital Market Commission, the certificated registered shares that have not been deposited to the issuer for dematerialisation, will be auctioned in the Athens Exchange by the supervising issuer. Forced sales procedure is held according to Article 99A of the Athens Exchange Rulebook. The average price of the period is calculated by dividing the Total transactions value by the Total volume and includes all the transactions made until the current date.

Exchange Traded Funds (ETFs) Characteristics

	Transactions Date (T)	Creation / Redemption	Units (T-1)	New Units (T-1)	Redemption Units (T-1)	Units (T) [1]	Fund Assets [2]	Net Unit Price	Dividend per Unit	Dividend Date
ALPHA ETF FTSE Athex Large Cap	19/12/2022	5,000	906,928	---	---	906,928	20,146,440.00	22.2139	0.52	01/07/2022

ETFs Notes

[1] - Units (T) = Units (T-1) + New Units (T-1) - Redemption Units (T-1)

[2] - The Creation / Redemption Units of T-1 are included.

Convertible Corporate Bonds - Regulated Market

Num Listed Bonds	Nominal price	Issue price	Today's Rate	Exp. Date	Duration (years)	Note	Coupon		Trading Unit	Corporate Bonds	Price min	Price max	Closing price	Previous closing price/date	Volume	Transactions Value	Last order		ear min	Year max
							Common	Preffered									Price	Buy / Sell		
														---		#Error		#Type!		

Corporate Bonds Notes

Transactions Volume = (Pieces) * (Nominal Price). Transactions Value = (Pieces) * (Nominal Price) * (price %) + (Accrued interest).
The price of a Bond is stated as a percentage (%) of Bond's Nominal Price.
Nominal Price in Euros (€), except if it is noted differently.

Non Convertible Corporate Bonds - Regulated Market

Num Listed Bonds	Nominal price	Issue price	Today's Rate	Exp. Date	Duration (years)	Note	Coupon		Trading Unit	Corporate Bonds	Accrued Int.	Yield.T.Mat	Price min	Price max	Closing price	Previous closing price/date	Volume	Transactions Value	Last order		ear min	Year max		
							Common	Preffered											Price	Buy / Sell			Date	
100,000	1,000.00	1,000.00	2.95	11/02/2027	5	---	2	---	1	SAFE BULKERS PARTICIPATIONS PLC (Non Convertible)	10.8167	4.6790	93.5000	93.5000	93.5000	93.0000	16/12/2022	2,000	1,891.63	93.0000	B	19/12/2022	88.9211	100.0000
320,000	1,000.00	1,000.00	3.40	21/07/2027	7	---	5	---	1	LAMDA DEVELOPMENT S.A. (Non Convertible)	14.4500	4.8280	93.0000	93.4000	93.0500	93.4000	16/12/2022	32,000	30,238.40	92.7000	B	19/12/2022	86.1000	102.0000
200,000	1,000.00	1,000.00	2.10	27/10/2027	7	---	5	---	1	O.P.A.P. S.A. (Non Convertible)	3.2083	3.9870	91.3101	94.2999	91.4831	92.4330	16/12/2022	99,000	91,617.46	91.3104	B	19/12/2022	90.0200	101.7500
200,000	1,000.00	1,000.00	1.90	23/03/2028	7	---	4	---	1	MOTOR OIL CORINTH REFINERIES SA (Non Convertible)	4.6972	4.3610	88.7000	89.0000	88.7132	88.7410	16/12/2022	91,000	81,156.45	88.5100	B	19/12/2022	87.7637	99.2000
100,000	1,000.00	1,000.00	2.70	25/05/2026	5	---	4	---	1	COSTAMARE PARTICIPATIONS PLC (Non Convertible)	1.9500	3.8380	96.0000	96.7500	96.0000	96.4000	16/12/2022	27,000	26,143.15	96.0000	B	19/12/2022	93.1800	102.0000
300,000	1,000.00	1,000.00	2.30	20/07/2028	7	---	3	---	1	PRODEA REIC S.A.(Non Convertible)	9.8389	5.6550	84.8000	84.9900	84.8000	85.0000	16/12/2022	8,000	6,866.51	84.5000	B	19/12/2022	83.9667	98.1000
150,000	1,000.00	1,000.00	2.65	22/10/2026	5	---	3	---	1	CPLP SHIPPING HOLDINGS PLC (Non Convertible)	4.2694	4.1820	94.0000	94.7500	94.4286	94.0000	16/12/2022	35,000	33,199.43	94.0001	B	19/12/2022	90.7000	100.0000
250,000	1,000.00	1,000.00	2.45	16/11/2028	7	---	3	---	1	ELVALHALCOR S.A. (Non Convertible)	2.3819	4.7300	87.9800	88.7500	88.7500	87.7180	16/12/2022	23,000	20,353.18	88.0000	B	19/12/2022	86.7000	100.2900
500,000	1,000.00	1,000.00	2.75	03/07/2027	7	---	5	---	1	GEK TERNA S.A. (Non Convertible)	12.9861	5.6470	88.0000	88.4500	88.0004	88.5000	16/12/2022	48,000	43,034.37	87.5000	B	19/12/2022	86.2000	99.0000
300,000	1,000.00	1,000.00	2.30	14/12/2028	7	---	3	---	1	GEK TERNA S.A. (Non Convertible)	0.4472	5.7230	83.6000	84.4888	83.9620	83.7000	16/12/2022	110,000	92,407.37	83.7000	B	19/12/2022	82.1755	100.0000
175,000	1,000.00	1,000.00	3.40	26/07/2024	5	---	7	---	1	ATTICA HOLDINGS S.A. (Non Convertible)	13.9778	4.7000	97.0500	97.4000	97.2058	97.5000	16/12/2022	208,000	205,095.38	97.2000	B	19/12/2022	93.2476	99.4500
230,000	1,000.00	1,000.00	4.70	12/07/2029	7	---	1	---	1	LAMDA DEVELOPMENT S.A. (Non convertible)	21.1500	4.7860	99.0000	99.5100	99.0600	100.1360	16/12/2022	66,000	67,053.10	99.0600	B	19/12/2022	99.0600	102.9190
100,000	1,000.00	1,000.00	4.40	26/07/2029	7	---	1	---	1	CPLP SHIPPING HOLDINGS PLC (Non Convertible)	18.0889	4.4750	---	---	---	99.2000	16/12/2022	---	---	98.5000	B	19/12/2022	92.6275	101.0000
200,000	1,000.00	1,000.00	3.60	12/03/2026	7	---	8	---	1	AEGEAN AIRLINES S.A. (Non Convertible)	10.0000	3.6750	98.3000	98.3000	98.3000	98.3700	16/12/2022	10,000	9,930.00	97.2000	B	19/12/2022	93.8900	101.3000
150,000	1,000.00	1,000.00	2.60	22/10/2026	7	---	7	---	1	TERNA ENERGY FINANCE S.A. (Non Convertible)	4.1889	4.5170	92.4000	92.4000	92.4000	92.3340	16/12/2022	3,000	2,784.57	92.1100	B	19/12/2022	91.2196	99.9900
100,000	1,000.00	1,000.00	2.80	25/01/2027	5	---	2	---	1	PREMIA S.A. (Non Convertible)	11.5889	6.1250	88.4399	88.4990	88.4551	87.2500	16/12/2022	15,000	13,442.10	87.5100	B	19/12/2022	86.6690	99.5000
120,000	1,000.00	1,000.00	3.95	04/04/2025	7	---	10	---	1	GEK TERNA S.A. (Non Convertible)	8.5583	3.8150	98.0000	99.5000	98.7500	99.3000	15/12/2022	252,000	249,304.81	98.1000	B	19/12/2022	98.0000	103.2000
90,000	1,000.00	1,000.00	3.00	11/05/2023	5	---	10	---	1	CORAL A.E. (Non Convertible)	3.3333	3.5270	99.5000	100.0000	99.6000	99.8500	16/12/2022	50,000	49,966.67	99.6501	B	19/12/2022	98.7891	102.0000

Corporate Bonds Notes

Transactions Volume = (Pieces) * (Nominal Price). Transactions Value = (Pieces) * (Nominal Price) * (price %) + (Accrued interest).
The price of a Bond is stated as a percentage (%) of Bond's Nominal Price.
Nominal Price in Euros (€), except if it is noted differently.

Non Convertible Corporate Bonds - Regulated Market

Num Listed Bonds	Nominal price	Issue price	Today's Rate	Exp. Date	Duration (years)	Note	Coupon		Trading Unit	Corporate Bonds	Accrued Int.	Yield.T.Mat	Price min	Price max	Closing price	Previous closing price/date	Volume	Transactions Value	Last order		ear min	Year max		
							Common	Preffered											Price	Buy / Sell			Date	
20,148	1,000.00	1,000.00	4.95	26/06/2023	5	---	9	---	1	B&F COMM. & GARM. INDUS. S.A. (Non Convertible)	24.3375	4.0410	100.0000	100.0000	100.0000	100.0000	09/12/2022	22,000	22,535.43	97.0000	B	19/12/2022	97.5905	102.0000
120,000	1,000.00	1,000.00	2.65	06/12/2028	7	---	3	---	1	NOVAL PROPERTY REIC (Non Convertible)	1.1042	5.2350	86.3999	87.5000	87.4500	86.6820	16/12/2022	30,000	26,193.12	86.0000	B	19/12/2022	86.1000	100.0000

Corporate Bonds Notes

Transactions Volume = (Pieces) * (Nominal Price). Transactions Value = (Pieces) * (Nominal Price) * (price %) + (Accrued interest).
The price of a Bond is stated as a percentage (%) of Bond's Nominal Price.
Nominal Price in Euros (€), except if it is noted differently.

Government Bonds

Number Listed Bonds	Nominal price	Today's Rate	Accrued Interest Calc	Exp. Date [1]	Duration (years)	Note	Coupons Date	Curr. coupon value	Trading Unit	Government Bonds	Price min	Price max	Closing price	Previous closing price/date	Volume	Transactions Value	Price	Last order Buy / Sell	Date
4,500,000	1,000.00	1.88	Actual/Actual	04/02/2035	15	---	04/02	1.88	1	GGB-FXD-040235-15Y-1.875-1.000	---	---	---	---	---	---	---	---	---
2,500,000	1,000.00	3.45	Actual/Actual	02/04/2024	5	---	02/04	3.45	1	GGB-FXD-020424-05Y-3.450-1.000	---	---	---	---	---	---	---	---	---
6,000,000	1,000.00	0.75	Actual/Actual	18/06/2031	10	---	18/06	0.75	1	GGB-FXD-180631-10Y-0.750-1.000	---	---	---	---	---	---	---	---	---
4,355,990,324	1.00	3.50	Actual/Actual	30/01/2023	5	---	01/02 - 31/01	3.50	1	GGB-FXD-300123-05Y-3.500-1.00	---	---	---	94.5720 13/07/2018	---	---	1.0000	B	28/11/2018
5,962,747,327	1.00	3.75	Actual/Actual	30/01/2028	10	---	/02 - 01/02 - 31/	3.75	1	GGB-FXD-300128-10Y-3.750-1.00	---	---	---	85.4610 13/07/2018	---	---	1.0000	B	28/11/2018
7,067,309,386	1.00	3.90	Actual/Actual	30/01/2033	15	---	/02 - 01/02 - 31/	3.90	1	GGB-FXD-300133-15Y-3.900-1.00	---	---	---	78.6730 13/07/2018	---	---	1.0000	B	28/11/2018
5,472,848,349	1.00	4.00	Actual/Actual	30/01/2037	19	---	/02 - 01/02 - 31/	4.00	1	GGB-FXD-300137-19Y-4.000-1.00	---	---	---	77.0370 13/07/2018	---	---	1.0000	B	28/11/2018
5,276,770,669	1.00	4.20	Actual/Actual	30/01/2042	24	---	/02 - 01/02 - 31/	4.20	1	GGB-FXD-300142-24Y-4.200-1.00	---	---	---	77.7640 13/07/2018	---	---	1.0000	B	28/11/2018
119,550,565	1.00	4.30	Actual/Actual	24/02/2023	11	---	24/02	4.30	1	GGB-FXD-240223-11Y-2.000-1.00	---	---	---	10.0000 22/06/2015	---	---	10.0000	B	11/07/2019
48,794,718	1.00	4.30	Actual/Actual	24/02/2024	12	---	24/02	4.30	1	GGB-FXD-240224-12Y-2.000-1.00	---	---	---	10.0000 22/06/2015	---	---	---	---	---
40,248,141	1.00	4.30	Actual/Actual	24/02/2025	13	---	24/02	4.30	1	GGB-FXD-240225-13Y-2.000-1.00	---	---	---	10.0000 22/06/2015	---	---	---	---	---
59,586,043	1.00	4.30	Actual/Actual	24/02/2026	14	---	24/02	4.30	1	GGB-FXD-240226-14Y-2.000-1.00	---	---	---	10.0000 22/06/2015	---	---	---	---	---
41,118,344	1.00	4.30	Actual/Actual	24/02/2027	15	---	24/02	4.30	1	GGB-FXD-240227-15Y-2.000-1.00	---	---	---	10.0000 22/06/2015	---	---	---	---	---
45,137,734	1.00	4.30	Actual/Actual	24/02/2028	16	---	24/02	4.30	1	GGB-FXD-240228-16Y-2.000-1.00	---	---	---	10.0000 22/06/2015	---	---	---	---	---
61,768,888	1.00	4.30	Actual/Actual	24/02/2029	17	---	24/02	4.30	1	GGB-FXD-240229-17Y-2.000-1.00	---	---	---	10.0000 22/06/2015	---	---	---	---	---
54,567,744	1.00	4.30	Actual/Actual	24/02/2030	18	---	24/02	4.30	1	GGB-FXD-240230-18Y-2.000-1.00	---	---	---	10.0000 22/06/2015	---	---	---	---	---
37,541,515	1.00	4.30	Actual/Actual	24/02/2031	19	---	24/02	4.30	1	GGB-FXD-240231-19Y-2.000-1.00	---	---	---	10.0000 22/06/2015	---	---	---	---	---
37,558,317	1.00	4.30	Actual/Actual	24/02/2032	20	---	24/02	4.30	1	GGB-FXD-240232-20Y-2.000-1.00	---	---	---	10.0000 22/06/2015	---	---	---	---	---
37,473,732	1.00	4.30	Actual/Actual	24/02/2033	21	---	24/02	4.30	1	GGB-FXD-240233-21Y-2.000-1.00	---	---	---	10.0000 22/06/2015	---	---	---	---	---
33,888,293	1.00	4.30	Actual/Actual	24/02/2034	22	---	24/02	4.30	1	GGB-FXD-240234-22Y-2.000-1.00	---	---	---	10.0000 22/06/2015	---	---	---	---	---
35,177,800	1.00	4.30	Actual/Actual	24/02/2035	23	---	24/02	4.30	1	GGB-FXD-240235-23Y-2.000-1.00	---	---	---	10.0000 22/06/2015	---	---	---	---	---
35,547,268	1.00	4.30	Actual/Actual	24/02/2036	24	---	24/02	4.30	1	GGB-FXD-240236-24Y-2.000-1.00	---	---	---	10.0000 22/06/2015	---	---	---	---	---
40,246,306	1.00	4.30	Actual/Actual	24/02/2037	25	---	24/02	4.30	1	GGB-FXD-240237-25Y-2.000-1.00	---	---	---	10.0000 22/06/2015	---	---	---	---	---
37,643,952	1.00	4.30	Actual/Actual	24/02/2038	26	---	24/02	4.30	1	GGB-FXD-240238-26Y-2.000-1.00	---	---	---	10.0000 22/06/2015	---	---	---	---	---
36,977,100	1.00	4.30	Actual/Actual	24/02/2039	27	---	24/02	4.30	1	GGB-FXD-240239-27Y-2.000-1.00	---	---	---	10.0000 22/06/2015	---	---	---	---	---
41,615,000	1.00	4.30	Actual/Actual	24/02/2040	28	---	24/02	4.30	1	GGB-FXD-240240-28Y-2.000-1.00	---	---	---	10.0000 22/06/2015	---	---	---	---	---
42,227,208	1.00	4.30	Actual/Actual	24/02/2041	29	---	24/02	4.30	1	GGB-FXD-240241-29Y-2.000-1.00	---	---	---	10.0000 22/06/2015	---	---	---	---	---
68,288,487	1.00	4.30	Actual/Actual	24/02/2042	30	---	24/02	4.30	1	GGB-FXD-240242-30Y-2.000-1.00	---	---	---	10.0000 22/06/2015	---	---	---	---	---
4,000,000	1,000.00	3.88	Actual/Actual	12/03/2029	10	---	12/03	3.88	1	GGB-FXD-120329-10Y-3.875-1.000	---	---	---	---	---	---	100.0000	B	15/10/2019
4,500,000	1,000.00	0.00	Actual/Actual	12/02/2026	5	---	12/02	0.00	1	GGB-FXD-120226-05Y-0.000-1.000	---	---	---	---	---	---	---	---	---
3,000,000	1,000.00	3.38	Actual/Actual	15/02/2025	7	---	15/02	3.38	1	GGB-FXD-150225-07Y-3.375-1.000	---	---	---	---	---	---	---	---	---
250,250	1,000.00	2.90	Actual/Actual	20/03/2023	4	---	20/03	2.90	1	GGB-FXD-200323-04Y-2.900-1.000	---	---	---	---	---	---	---	---	---
964,000	1,000.00	3.25	Actual/Actual	20/03/2025	6	---	20/03	3.25	1	GGB-FXD-200325-06Y-3.250-1.000	---	---	---	---	---	---	---	---	---
2,100,000	1,000.00	3.55	Actual/Actual	20/03/2026	7	---	20/03	3.55	1	GGB-FXD-200326-07Y-3.550-1.000	---	---	---	---	---	---	---	---	---

Government Bonds Notes

Transactions Volume = (Pieces) * (Nominal Price). Transactions Value = (Pieces) * (Nominal Price) * (price %) + (Accrued interest).

The Value of current coupon for the issues with NV 0.01 euro refers to NV 100 euros

FLR: Floating Interest Rate.

[1] - The Expiration Date of the interest bearing period and the Date for coupon payment.

Government Bonds

Number Listed Bonds	Nominal price	Today's Rate	Accrued Interest Calc	Exp. Date [1]	Duration (years)	Note	Coupons Date	Curr. coupon value	Trading Unit	Government Bonds	Price min	Price max	Closing price	Previous closing price/date	Volume	Transactions Value	Price	Last order Buy / Sell	Date
40,000	1,000.00	2.18	FLR	Actual/360	16/09/2023	1	---	16/03 - 16/09	---	1	GGB-FLT-160923-01Y-2.178-1.000	---	---	---	---	---	---	---	---
5,500,000	1,000.00	1.50		Actual/Actual	18/06/2030	10	---	18/06	1.50	1	GGB-FXD-180630-10Y-1.500-1.000	---	---	---	---	---	---	---	---
5,364,250	1,000.00	3.25		Actual/Actual	20/03/2050	30	---	20/03	3.25	1	GGB-FXD-200350-30Y-3.250-1.000	---	---	---	---	---	---	---	---
3,924,361	1,000.00	2.00		Actual/Actual	22/04/2027	7	---	22/04	2.00	1	GGB-FXD-220427-07Y-2.000-1.000	---	---	---	---	---	99.9000	B	22/04/2020
2,500,000	1,000.00	1.88		Actual/Actual	23/07/2026	7	---	23/07	1.88	1	GGB-FXD-230726-07Y-1.875-1.000	---	---	---	---	---	---	---	---
3,500,000	1,000.00	1.88		Actual/Actual	24/01/2052	30	---	24/01	1.88	1	GGB-FXD-240152-30Y-1.875-1.000	---	---	---	---	---	---	---	---
3,700,000	1,000.00	1.75		Actual/Actual	18/06/2032	10	---	18/06	1.75	1	GGB-FXD-180632-10Y-1.750-1.000	---	---	---	---	---	---	---	---
2,200,000	1,000.00	1.13	FLR	Actual/360	15/12/2027	5	---	- 15/12 - 15/03 -	---	1	GGB-FLT-151227-05Y-1.130-1.000	---	---	---	---	---	102.2000	B	19/12/2022

Government Bonds Notes

Transactions Volume = (Pieces) * (Nominal Price). Transactions Value = (Pieces) * (Nominal Price) * (price %) + (Accrued interest).
The Value of current coupon for the issues with NV 0.01 euro refers to NV 100 euros
FLR: Floating Interest Rate.
[1] - The Expiration Date of the interest bearing period and the Date for coupon payment.

Treasury Bills & Zero Coupon Government Bonds

	13-Week Maturity									26-Week Maturity								52-Week Maturity									
Issue Date	Exp. Date	Initial Rate	Num Listed Bonds	Nominal price	Issue price	Last Trade Price	Last Trade Date	Volume Traded	Note	Exp. Date	Initial Rate	Num Listed Bonds	Nominal price	Issue price	Last Trade Price	Last Trade Date	Volume Traded	Note	Exp. Date	Initial Rate	Num Listed Bonds	Nominal price	Issue price	Last Trade Price	Last Trade Date	Volume Traded	Note
11/03/2022	---	---	---	---	---	---	---	---	---	---	---	---	---	---	---	---	---	---	10/03/2023	-0.23	1,000,000	1,000.00	1,002.30	---	---	---	---
10/06/2022	---	---	---	---	---	---	---	---	---	---	---	---	---	---	---	---	---	---	09/06/2023	0.83	1,600,000	1,000.00	991.68	---	---	---	---
09/09/2022	---	---	---	---	---	---	---	---	---	---	---	---	---	---	---	---	---	---	08/09/2023	1.97	1,000,000	1,000.00	980.47	---	---	---	---
09/12/2022	---	---	---	---	---	---	---	---	---	---	---	---	---	---	---	---	---	---	08/12/2023	2.73	600,000	1,000.00	973.10	---	---	---	---

Bonds in Circulation	Currency / Min nominal traded Value	Coupons Payment Date	Current Coupon Value	Note	Coupon	Trading Unit	Issue Date	Duration (years)	Today's Interest	A.I.C in days	Bonds	Last price of previous days		Last Outcry in Cash (euro)			Trades in Pieces	Life min	Life Max
												Price	Buy / Sell	Date					
Corporate Bonds in Foreign Currency and Euro																			
103,746	GBP / 10	01/12	0.25	---	64	1	01/12/1930	98	2.5	360	National Mortgage Bank	2.27	05/02/1996	2.27	S	05/02/1996	---	2.27	2.27
0	GBP / 10	01/12	0.25	---	66	1	01/12/1928	100	2.5	360	National Mortgage Bank	---	---	---	---	---	---	---	---

Government Bonds Notes

A.I.C: Accrued Interest Calculation base.
FLR: Floating Interest Rate.
The minimum tradeable Nominal Value for all Demeterialised Government Titles is 100 Euros.
(μτφρ-0)

Athex & ATHEXClear Members List

Member Name			Stock Market			Derivatives Market		ATHEXClear Member	
Address	Phone	Fax	Market Member	Remote Member	Market Maker	Proprietary	Market Maker	General Clearing	Direct Clearing
A. SARRIS SECURITIES S.A.			a						
6, ΔΡΑΓΑΤΣΑΝΙΟΥ 6 ΑΘΗΝΑ	2103367700								
AEONIC SECURITIES C.I.F. P.L.C.			a						
, ΛΑΪΟΥ 6, ΓΡ. 301B, ANNA COURT	35725337600								
ALPHA BANK S.A.								a	
, ΣΤΑΔΙΟΥ 40 ΑΘΗΝΑ	2103260000								
ALPHA FINANCE INVESTMENT SERVICES SINGLE MEMBER SA			a		a	a	a		a
5, ΠΑΝΕΠΙΣΤΗΜΙΟΥ 45 ΑΘΗΝΑ	2103677400								
ARGUS STOCKBROKERS LTD			a	a		a			
25 , 25 ΛΕΩΦΟΡΟΣ ΔΗΜΟΣΘΕΝΗ ΣΕΒΕΡΗ	0035722717000								
ATLANTIC SECURITIES LTD			a	a					
37, ΠΡΟΔΡΟΜΟΥ 37	0035722445400								
AXON SECURITIES S.A.			a			a			
48, ΣΤΑΔΙΟΥ 48 ΑΘΗΝΑ	2103363800								
BETA SECURITIES S.A.			a		a	a			a
29 , ΑΛΕΞΑΝΔΡΑΣ 29 ΑΘΗΝΑ	2106478930								
BNP PARIBAS S.A.								a	
, ΛΑΜΨΑΚΟΥ 2 ΑΘΗΝΑ	2107468525								
BOFA SECURITIES EUROPE SA			a	a					
, 112 AVENUE KL?BER 75116	+33 153655555								
CAPITAL SECURITIES S.A.			a			a			
58, ΜΗΤΡΟΠΟΛΕΩΣ 58 ΑΘΗΝΑ	2103369700								
CITIGROUP GLOBAL MARKETS EUROPE AG			a	a					
16, REUTERWEG 16	+49 691366-0								
CITIGROUP GLOBAL MARKETS LIMITED			a						
1, 33 CANADA SQUARE -CANARY WHARF	+44 02079864000								
CREDIT SUISSE BANK (EUROPE), S.A.			a	a					
, CALLE AYALA 42, 3A PLANTA-B MADRID	+34917916000								
CREDIT SUISSE SECURITIES (EUROPE) LIMITED			a						
1 , ONE CABOT SQUARE LONDON	+44 2078888888								
CYCLOS SECURITIES S.A.			a			a			
39, ΠΑΝΕΠΙΣΤΗΜΙΟΥ 39 ΑΘΗΝΑ	2103364300								
DEUTSCHE BANK S.A.				a					
1 , GREAT WINCHESTER STREET LONDON	+44 20 754 54209	00441133361437							
EUROBANK EQUITIES INVESTMENT FIRM SINGLE MEMBER SA			a		a	a	a		a
, ΦΙΛΕΛΛΗΝΩΝ 10 & ΞΕΝΟΦΩΝΤΟΣ 13 ΑΘΗΝΑ	2103720425								
EUROBANK S.A.								a	
, ΟΘΩΝΟΣ 8 ΑΘΗΝΑ	2103337000								
EUROCORP INVESTMENT SERVICES S.A.			a			a			a
14, ΠΛ.ΦΙΛΙΚΗΣ ΕΤΑΙΡΕΙΑΣ 14 ΑΘΗΝΑ	2107263600								
EUOTRUST INVESTMENT FIRM SA			a						
113, ΣΕΒΑΣΤΟΥΠΟΛΕΩΣ 113 ΑΘΗΝΑ	2103363100								
EUROXX SECURITIES S.A.			a		a	a	a		a
7, ΠΑΛΑΙΟΛΟΓΟΥ ΧΑΛΑΝΔΡΙ	(210)-6879400	(210)-6879401							
7, ΠΑΛΕΟΛΟΓΟΥ ΧΑΛΑΝΔΡΙ	+30 2106879400	210-6879401							
G. A. PERVANAS SECURITIES- INVESTMENT SERVICES S.A.			a						
7-9, ΣΟΦΟΚΛΕΟΥΣ 7-9 ΑΘΗΝΑ	2103727200								
GLOBAL CAPITAL SECURITIES & FINANCIAL SERVICES LTD			a	a					
50, ΑΡΧΙΕΠΙΣΚΟΠΟΥ ΜΑΚΑΡΙΟΥ Γ50	0035722710710								
HELLENIC AMERICAN SECURITIES S.A.			a		a	a			a
27, ΑΝΔΡΕΑ ΠΑΠΑΝΔΡΕΟΥ 27 ΜΑΡΟΥΣΙ	2103311100								
HELLENIC BANK (INVESTMENTS) LTD				a					
, ΑVE.KYRIAKΟΥ MATSI 31 - PO BOX 24747 NICOSIA	+357 22500100	357 22500110							
HSBC CONTINENTAL EUROPE								a	
109-111, Α.ΜΕΣΟΓΕΙΩΝ 109-111	2106960000								
INDEX SECURITIES S.A.			a						
6, ΔΡΑΓΑΤΣΑΝΙΟΥ 6 ΑΘΗΝΑ	2103213920								
J. CHR. MAVRIKIS SECURITIES S.A.			a						
5, ΣΟΦΟΚΛΕΟΥΣ 5 ΑΘΗΝΑ	2103216730								
KAPPA SECURITIES S.A.			a			a			
15, ΒΑΛΛΑΡΙΤΟΥ 15 ΑΘΗΝΑ	2103678600								
KARAMANOF SECURITIES & INVESTMENT SERVICES S.A.			a						
2, ΠΛ.ΑΓ.ΘΕΟΔΩΡΩΝ 2 ΑΘΗΝΑ	2103212947								

Athex & ATHEXClear Members List

Member Name			Stock Market			Derivatives Market		ATHEXClear Member	
Address	Phone	Fax	Market Member	Remote Member	Market Maker	Proprietary	Market Maker	General Clearing	Direct Clearing
LAIKI FINANCIAL SERVICES LTD			a						
26, AVE. VYRONOS NICOSIA	357 22367367	357 22718567							
LEON DEPOLAS SECURITIES S.A.			a		a	a			
1, ΧΡΗΣΤΟΥ ΛΑΔΑ 1 ATHINA	2103213276 -28								
MEGA EQUITY SECURITIES & FINANCIAL SERVICES PUBLIC LTD			a	a		a			
42-44, ΛΕΩΦ.ΓΡΙΒΑ ΔΙΓΕΝΗ 42-44	0035722711711								
MERIT SECURITIES S.A			a		a	a			a
5, ΣΟΦΟΚΛΕΟΥΣ 5 ATHINA	2103671880								
MERRILL LYNCH INTERNATIONAL			a						
2 , 2 KING EDWARD STREET LONDON	+44 20276281000								
N. CHRYSOCHOIDIS SECURITIES S.A.			a			a			a
7-9, ΣΟΦΟΚΛΕΟΥΣ 7-9 ATHINA	2103213913								
NATIONAL BANK OF GREECE S.A.			a			a		a	
86, ΑΙΟΛΟΥ STR. ATHINA	(210)-3341000	(210)-3228187							
68, ΑΚΑΔΙΜΙΑΣ STR. ATHINA	(210)-3328817	(210)-3328678							
NATIONAL SECURITIES SINGLE MEMBER SA			a		a	a	a		
66, ΛΕΩΦΟΡΟΣ ΑΘΗΝΩΝ 128-132 & ΙΦΙΓΕΝΙΑΣ ATHINA	2103328784								
NUNTIUS BROKERAGE AND INVESTMENT SERVICES S.A			a						
6, ΔΡΑΓΑΤΣΑΝΙΟΥ 6 ATHINA	2103350599								
ONE PLUS CAPITAL LIMITED			a	a					
, 75 PRODROMOU AVENUE NICOSIA 1307	35722873760								
OPTIMA BANK S.A.			a		a	a	a	a	
32 , ΑΙΓΙΑΛΕΙΑΣ 32 & ΠΑΡΑΔΕΙΣΟΥ MAROUSI	2108173663								
PANTELAKIS SECURITIES S.A.			a		a	a	a		
57, ΕΘΝΙΚΗΣ ΑΝΤΙΣΤΑΣΕΩΣ 57, ΚΤΙΡΙΟ Β CHALANDRI	2106965000								
PEGASUS SECURITIES S.A			a			a			
17 , ΒΑΛΛΩΡΙΤΟΥ 17 & ΑΜΕΡΙΚΗΣ ATHINA	2103670700								
PIRAEUS BANK S.A.			a			a		a	
, ΑΜΕΡΙΚΗΣ 4 ATHINA	2103335000								
PIRAEUS SECURITIES S. A.			a		a	a	a		a
10, ΣΤΑΔΙΟΥ 10 ATHINA	2103354100								
PROCHOICE SECURITIES LTD			a	a					
57, ΛΕΩΦ.ΣΠΥΡΟΥ ΚΥΠΡΙΑΝΟΥ 57, ΑΚΙΝΗΤΑ Φ	035724661192								
SHARELINK SECURITIES & FINANCIAL SERVICES LTD			a			a			
6 , HOUSE-ΘΕΟΤΟΚΗ 6 ΜΕΓΑΡΟ ΕΛΛΗΝΑ	+357 22554200								
SOCIETE GENERALE S.A.			a	a		a			
, 17 COURS VALMY, CEDEX	+157290504								
SOLIDUS SECURITIES S.A			a			a			a
64, ΛΟΥΙΖΗΣ ΠΙΑΝΚΟΥΡ 64 ATHINA	2106900600								
ST. EM. LAVRENTAKIS SECURITIES S.A.			a			a			
7-9, ΣΟΦΟΚΛΕΟΥΣ 7-9 ATHINA	2103213336								
THE CYPRUS INVESTMENT & & SECURITIES CORPORATION LTD			a	a					
154, ΑΓΙΟΥ ΠΡΟΚΟΠΙΟΥ & ΠΟΣΕΙΔΩΝΟΣ 1	0035722121700								
UBS EUROPE SE			a	a					
, OPERNTURM, BOCKENHEIMER LANDSTRASSE 2-4	496921790								
UBS LIMITED			a						
1 , FINSBURY AVENUE LONDON	+44 2075687135								

List of Stocks under Market Making operations

Securities	Stock Category
Market Maker	Start Market Making
MLS MULTIMEDIA SA (CR)	Suspension Status
PIRAEUS SECURITIES S. A.	01/08/2019
ALPHA ETF FTSE Athex Large Cap	Exchange Traded Funds (ETFs)
ALPHA FINANCE INVESTMENT SERVICES SINGLE MEMBER SA	02/01/1900
NATIONAL SECURITIES SINGLE MEMBER SA	02/01/1900
ADMIE (IPTO) HOLDING S.A. (CR)	Main Market
EUROBANK EQUITIES INVESTMENT FIRM SINGLE MEMBER SA	24/05/2021
HELLENIC AMERICAN SECURITIES S.A.	09/03/2020
PIRAEUS SECURITIES S. A.	29/06/2017
AEGEAN AIRLINES (CR)	Main Market
EUROBANK EQUITIES INVESTMENT FIRM SINGLE MEMBER SA	22/09/2020
ALPHA SERVICES HOLD (CR)	Main Market
ALPHA FINANCE INVESTMENT SERVICES SINGLE MEMBER SA	29/02/2016
EUROBANK EQUITIES INVESTMENT FIRM SINGLE MEMBER SA	22/10/2006
HELLENIC AMERICAN SECURITIES S.A.	25/07/2014
LEON DEPOLAS SECURITIES S.A.	04/01/2016
MERIT SECURITIES S.A	03/09/2012
NATIONAL SECURITIES SINGLE MEMBER SA	02/01/1900
PIRAEUS SECURITIES S. A.	28/05/2009
ALPHA TRUST (CR)	Main Market
LEON DEPOLAS SECURITIES S.A.	04/01/2021
ANDROMEDA SA (CR)	Main Market
BETA SECURITIES S.A.	15/02/2021
ATTICA BANK S.A. (CR)	Main Market
EUROXX SECURITIES S.A.	22/01/2016
PIRAEUS SECURITIES S. A.	20/09/2017
AUTOHELLAS SA (CR)	Main Market
ALPHA FINANCE INVESTMENT SERVICES SINGLE MEMBER SA	01/07/2019
EUROXX SECURITIES S.A.	02/07/2018
AVAX S.A. (CR)	Main Market
EUROBANK EQUITIES INVESTMENT FIRM SINGLE MEMBER SA	14/12/2015
PIRAEUS SECURITIES S. A.	01/02/2021
AVE (CR)	Main Market
EUROXX SECURITIES S.A.	05/06/2020
BRIQ PROPERTIES (CR)	Main Market
EUROBANK EQUITIES INVESTMENT FIRM SINGLE MEMBER SA	09/09/2019
LEON DEPOLAS SECURITIES S.A.	22/02/2021
CC HBC AG (CR)	Main Market
BETA SECURITIES S.A.	08/03/2021
NATIONAL SECURITIES SINGLE MEMBER SA	02/01/1900
PIRAEUS SECURITIES S. A.	04/05/2015
CENERGY HOLDINGS (CB)	Main Market
ALPHA FINANCE INVESTMENT SERVICES SINGLE MEMBER SA	02/01/2016
EUROBANK EQUITIES INVESTMENT FIRM SINGLE MEMBER SA	02/01/2016
OPTIMA BANK S.A.	14/03/2022
CNL CAPITAL (CR)	Main Market
MERIT SECURITIES S.A	01/10/2018
DIMAND (CR)	Main Market
ALPHA FINANCE INVESTMENT SERVICES SINGLE MEMBER SA	08/08/2022
EUROBANK EQUITIES INVESTMENT FIRM SINGLE MEMBER SA	08/08/2022
EKTER SA (CR)	Main Market
BETA SECURITIES S.A.	26/09/2022
EUROBANK EQUITIES INVESTMENT FIRM SINGLE MEMBER SA	16/10/2017
LEON DEPOLAS SECURITIES S.A.	21/05/2018
ELASTRON (CR)	Main Market
LEON DEPOLAS SECURITIES S.A.	20/02/2017
ELLAKTOR (CR)	Main Market
ALPHA FINANCE INVESTMENT SERVICES SINGLE MEMBER SA	18/03/2019
EUROBANK EQUITIES INVESTMENT FIRM SINGLE MEMBER SA	01/06/2012
EUROXX SECURITIES S.A.	24/09/2018
NATIONAL SECURITIES SINGLE MEMBER SA	02/01/1900
PIRAEUS SECURITIES S. A.	22/10/2018
ELTON SA (CR)	Main Market
BETA SECURITIES S.A.	03/09/2012
EUROBANK EQUITIES INVESTMENT FIRM SINGLE MEMBER SA	28/11/2022
LEON DEPOLAS SECURITIES S.A.	01/04/2019
ELVALHALCOR (CR)	Main Market
ALPHA FINANCE INVESTMENT SERVICES SINGLE MEMBER SA	07/05/2018
EUROBANK EQUITIES INVESTMENT FIRM SINGLE MEMBER SA	07/05/2018

List of Stocks under Market Making operations

Securities	Stock Category
Market Maker	Start Market Making
ENTERSOFT (CR)	Main Market
EUROBANK EQUITIES INVESTMENT FIRM SINGLE MEMBER SA	22/06/2020
EUROBANK HOLDINGS (CR)	Main Market
ALPHA FINANCE INVESTMENT SERVICES SINGLE MEMBER SA	09/01/2006
EUROBANK EQUITIES INVESTMENT FIRM SINGLE MEMBER SA	01/06/2012
HELLENIC AMERICAN SECURITIES S.A.	25/07/2014
LEON DEPOLAS SECURITIES S.A.	30/11/2018
MERIT SECURITIES S.A	06/11/2017
NATIONAL SECURITIES SINGLE MEMBER SA	02/01/1900
PIRAEUS SECURITIES S. A.	28/09/2009
EYDAP S.A. (CR)	Main Market
ALPHA FINANCE INVESTMENT SERVICES SINGLE MEMBER SA	27/01/2020
EUROBANK EQUITIES INVESTMENT FIRM SINGLE MEMBER SA	10/06/2019
FOURLIS (CR)	Main Market
EUROBANK EQUITIES INVESTMENT FIRM SINGLE MEMBER SA	01/12/2016
PIRAEUS SECURITIES S. A.	06/03/2017
GEK TERNA (CR)	Main Market
BETA SECURITIES S.A.	08/03/2021
EUROBANK EQUITIES INVESTMENT FIRM SINGLE MEMBER SA	24/05/2021
PIRAEUS SECURITIES S. A.	29/08/2019
GR. SARANTIS S.A. (CR)	Main Market
BETA SECURITIES S.A.	14/05/2012
EUROBANK EQUITIES INVESTMENT FIRM SINGLE MEMBER SA	24/10/2016
HELLENIC EXCHANGES-A.S.E. (CR)	Main Market
HELLENIC AMERICAN SECURITIES S.A.	01/09/2014
NATIONAL SECURITIES SINGLE MEMBER SA	02/01/1900
PIRAEUS SECURITIES S. A.	04/05/2015
HELLENIQ ENERGY (CR)	Main Market
HELLENIC AMERICAN SECURITIES S.A.	14/09/2015
PIRAEUS SECURITIES S. A.	20/03/2017
IDEAL HOLDINGS (CR)	Main Market
EUROBANK EQUITIES INVESTMENT FIRM SINGLE MEMBER SA	07/06/2021
PIRAEUS SECURITIES S. A.	07/06/2021
INFORM P. LYKOS (CR)	Main Market
BETA SECURITIES S.A.	31/01/2022
INTERCONTINENTAL (CR)	Main Market
LEON DEPOLAS SECURITIES S.A.	03/06/2019
INTERLIFE G.C.I.(CR)	Main Market
BETA SECURITIES S.A.	24/10/2022
INTERWOOD-XYLEMPORIA (CR)	Main Market
EUROBANK EQUITIES INVESTMENT FIRM SINGLE MEMBER SA	05/07/2021
PANTELAKIS SECURITIES S.A.	01/07/2021
INTRAKAT (CR)	Main Market
PANTELAKIS SECURITIES S.A.	10/10/2022
JUMBO SA (CR)	Main Market
BETA SECURITIES S.A.	01/02/2021
EUROBANK EQUITIES INVESTMENT FIRM SINGLE MEMBER SA	25/05/2020
MERIT SECURITIES S.A	06/11/2017
PIRAEUS SECURITIES S. A.	06/03/2017
KLOUKINAS - LAPPAS SA (CR)	Main Market
BETA SECURITIES S.A.	22/09/2014
KRI-KRI S.A. (CR)	Main Market
EUROBANK EQUITIES INVESTMENT FIRM SINGLE MEMBER SA	07/05/2018
LEON DEPOLAS SECURITIES S.A.	16/01/2017
LAMDA DEVELOPMENT SA (CR)	Main Market
EUROBANK EQUITIES INVESTMENT FIRM SINGLE MEMBER SA	08/12/2014
PANTELAKIS SECURITIES S.A.	06/11/2017
PIRAEUS SECURITIES S. A.	29/06/2017
LAMPSA HOTEL SA (CR)	Main Market
LEON DEPOLAS SECURITIES S.A.	16/01/2017
MARFIN INVESTMENT GROUP (CR)	Main Market
EUROBANK EQUITIES INVESTMENT FIRM SINGLE MEMBER SA	23/03/2015
PIRAEUS SECURITIES S. A.	02/02/2009

List of Stocks under Market Making operations

Securities	Stock Category
Market Maker	Start Market Making
MOTOR OIL (CR)	Main Market
BETA SECURITIES S.A.	08/03/2021
EUROBANK EQUITIES INVESTMENT FIRM SINGLE MEMBER SA	22/10/2006
LEON DEPOLAS SECURITIES S.A.	01/04/2019
MERIT SECURITIES S.A.	25/02/2019
NATIONAL SECURITIES SINGLE MEMBER SA	02/01/1900
PIRAEUS SECURITIES S. A.	04/05/2015
MPLE KEDROS (CR)	Main Market
MERIT SECURITIES S.A.	30/09/2022
MYTILINEOS (CR)	Main Market
ALPHA FINANCE INVESTMENT SERVICES SINGLE MEMBER SA	15/04/2019
BETA SECURITIES S.A.	11/04/2022
EUROBANK EQUITIES INVESTMENT FIRM SINGLE MEMBER SA	20/09/2017
MERIT SECURITIES S.A.	25/02/2019
NATIONAL SECURITIES SINGLE MEMBER SA	02/01/1900
PIRAEUS SECURITIES S. A.	04/05/2015
NATIONAL BANK (CR)	Main Market
ALPHA FINANCE INVESTMENT SERVICES SINGLE MEMBER SA	09/01/2006
EUROBANK EQUITIES INVESTMENT FIRM SINGLE MEMBER SA	22/10/2006
HELLENIC AMERICAN SECURITIES S.A.	25/07/2014
LEON DEPOLAS SECURITIES S.A.	20/05/2015
MERIT SECURITIES S.A.	03/09/2012
NATIONAL SECURITIES SINGLE MEMBER SA	02/01/1900
PIRAEUS SECURITIES S. A.	08/09/2008
OPAP (CR)	Main Market
ALPHA FINANCE INVESTMENT SERVICES SINGLE MEMBER SA	09/01/2006
BETA SECURITIES S.A.	11/04/2022
EUROBANK EQUITIES INVESTMENT FIRM SINGLE MEMBER SA	22/10/2006
HELLENIC AMERICAN SECURITIES S.A.	25/07/2014
MERIT SECURITIES S.A.	20/03/2017
NATIONAL SECURITIES SINGLE MEMBER SA	02/01/1900
PIRAEUS SECURITIES S. A.	04/05/2015
OTE (CR)	Main Market
ALPHA FINANCE INVESTMENT SERVICES SINGLE MEMBER SA	09/01/2006
BETA SECURITIES S.A.	11/04/2022
EUROBANK EQUITIES INVESTMENT FIRM SINGLE MEMBER SA	22/10/2006
HELLENIC AMERICAN SECURITIES S.A.	25/07/2014
LEON DEPOLAS SECURITIES S.A.	20/04/2015
MERIT SECURITIES S.A.	20/03/2017
NATIONAL SECURITIES SINGLE MEMBER SA	02/01/1900
PIRAEUS SECURITIES S. A.	08/09/2008
P.P.A. S.A. (CR)	Main Market
EUROBANK EQUITIES INVESTMENT FIRM SINGLE MEMBER SA	06/02/2019
PAPOUTSANIS (CR)	Main Market
BETA SECURITIES S.A.	25/11/2013
EUROBANK EQUITIES INVESTMENT FIRM SINGLE MEMBER SA	06/12/2021
PETROPOULOS PETROS (CR)	Main Market
EUROBANK EQUITIES INVESTMENT FIRM SINGLE MEMBER SA	01/04/2019
PANTELAKIS SECURITIES S.A.	16/03/2020
PIRAEUS FINANCIAL HOLD (CR)	Main Market
ALPHA FINANCE INVESTMENT SERVICES SINGLE MEMBER SA	15/04/2019
EUROBANK EQUITIES INVESTMENT FIRM SINGLE MEMBER SA	22/10/2006
EUROXX SECURITIES S.A.	15/02/2016
HELLENIC AMERICAN SECURITIES S.A.	25/07/2014
LEON DEPOLAS SECURITIES S.A.	30/11/2018
MERIT SECURITIES S.A.	16/09/2013
NATIONAL SECURITIES SINGLE MEMBER SA	02/01/1900
PIRAEUS SECURITIES S. A.	16/02/2009
PLAISIO COMPUTERS SA (CR)	Main Market
EUROBANK EQUITIES INVESTMENT FIRM SINGLE MEMBER SA	02/03/2015
PPC (CR)	Main Market
ALPHA FINANCE INVESTMENT SERVICES SINGLE MEMBER SA	09/01/2006
BETA SECURITIES S.A.	01/02/2021
EUROBANK EQUITIES INVESTMENT FIRM SINGLE MEMBER SA	22/10/2006
HELLENIC AMERICAN SECURITIES S.A.	01/09/2014
MERIT SECURITIES S.A.	06/11/2017
NATIONAL SECURITIES SINGLE MEMBER SA	02/01/1900
PIRAEUS SECURITIES S. A.	28/09/2009

List of Stocks under Market Making operations

Securities	Stock Category
Market Maker	Start Market Making
PREMA (CR)	Main Market
BETA SECURITIES S.A.	01/06/2021
LEON DEPOLAS SECURITIES S.A.	05/12/2022
PANTELAKIS SECURITIES S.A.	23/12/2021
PROFILE SA (CR)	Main Market
PANTELAKIS SECURITIES S.A.	01/07/2019
QUEST HOLDINGS (CR)	Main Market
BETA SECURITIES S.A.	26/03/2018
EUROBANK EQUITIES INVESTMENT FIRM SINGLE MEMBER SA	28/01/2019
SIDMA STEEL (CR)	Main Market
LEON DEPOLAS SECURITIES S.A.	06/06/2022
SPACE HELLAS SA (CR)	Main Market
MERIT SECURITIES S.A	09/12/2022
TECHNICAL OLYMPIC SA (CR)	Main Market
BETA SECURITIES S.A.	04/04/2022
TERNA ENERGY (CR)	Main Market
EUROBANK EQUITIES INVESTMENT FIRM SINGLE MEMBER SA	24/05/2021
PIRAEUS SECURITIES S. A.	09/12/2019
THRACE PLASTICS SA (CR)	Main Market
ALPHA FINANCE INVESTMENT SERVICES SINGLE MEMBER SA	26/03/2018
EUROBANK EQUITIES INVESTMENT FIRM SINGLE MEMBER SA	26/03/2018
TITAN CEMENT (CB)	Main Market
BETA SECURITIES S.A.	01/02/2021
EUROBANK EQUITIES INVESTMENT FIRM SINGLE MEMBER SA	06/11/2019
PIRAEUS SECURITIES S. A.	18/01/2021
TZIRAKIAN PROFIL (CR)	Main Market
LEON DEPOLAS SECURITIES S.A.	19/07/2021
UNIBIOS (CR)	Main Market
LEON DEPOLAS SECURITIES S.A.	01/02/2021
VIOHALCO SA/NV (CB)	Main Market
ALPHA FINANCE INVESTMENT SERVICES SINGLE MEMBER SA	11/03/2008
EUROBANK EQUITIES INVESTMENT FIRM SINGLE MEMBER SA	04/03/2014
MERIT SECURITIES S.A	17/03/2014

Underlying Asset				Derivatives Market													
Price max	Price min	Closing price	change	Delivery Month	Open price	Price max	Price min	Last price	Closing price	Last Bid	Last Ask	Fixing price*	Life high	Life low	Trades	Volume	Open Interest
FTSE/Athex Large Cap				(Trade Unit: 1 Index Point x 2€, Cash Settlement)													
2,226.07	2,204.37	2,226.07	0.71%	January 2023	2,205.00	2,220.25	2,205.00	2,217.50	2,217.50	---	---	---	2,247.50	---	54	165	4,467
				February 2023	2,214.00	2,216.00	2,214.00	2,216.00	2,216.00	---	---	---	2,231.25	---	3	4	84
				March 2023	---	---	---	---	2,221.50	---	---	---	---	---	---	---	---
				June 2023	---	---	---	---	2,232.75	---	---	---	---	---	---	---	---
				September 2023	---	---	---	---	2,244.00	---	---	---	---	---	---	---	---
				December 2023	---	---	---	---	2,255.00	---	---	---	---	---	---	---	---
FTSE/Athex Banks				(Trade Unit: 1 Index Point x 15€, Cash Settlement)													
633.74	623.81	632.41	1.23%	March 2023	---	---	---	---	620.00	---	---	---	640.00	---	---	---	6
				June 2023	---	---	---	---	631.00	---	---	---	---	---	---	---	---
				September 2023	---	---	---	---	634.25	---	---	---	---	---	---	---	---
				December 2023	---	---	---	---	637.25	---	---	---	---	---	---	---	---

Underlying Asset				Derivatives Market													
Price max	Price min	Closing price	change	Delivery Month	Open price	Price max	Price min	Last price	Closing price	Last Bid	Last Ask	Fixing price*	Life high	Life low	Trades	Volume	Open Interest
ADMIE (IPTO) HOLDING S.A. (CR)				(Contract Size: 100 Securities, Physical Delivery)													
1.738	1.706	1.716	-0.23%	March 2023	1.74	1.74	1.72	1.73	1.73	---	---	---	1.93	---	8	15	7,591
				June 2023	---	---	---	---	1.74	---	---	---	---	---	---	---	---
				September 2023	---	---	---	---	1.75	---	---	---	---	---	---	---	---
				December 2023	---	---	---	---	1.75	---	---	---	---	---	---	---	---
ALPHA SERVICES HOLD (CR)				(Contract Size: 100 Securities, Physical Delivery)													
1.008	0.9866	0.9938	0.73%	March 2023	0.990	1.01	0.990	0.995	0.995	---	---	---	1.07	---	64	1,529	139,055
				June 2023	---	---	---	---	0.991	---	---	---	1.05	---	---	---	3
				September 2023	---	---	---	---	1.00	---	---	---	---	---	---	---	---
				December 2023	---	---	---	---	1.01	---	---	---	---	---	---	---	---
CC HBC AG (CR)				(Contract Size: 100 Securities, Physical Delivery)													
22.57	22.27	22.53	1.81%	March 2023	22.40	22.51	22.40	22.51	22.51	---	---	---	23.30	---	6	7	532
				June 2023	---	---	---	---	22.35	---	---	---	---	---	---	---	---
				September 2023	---	---	---	---	22.47	---	---	---	---	---	---	---	---
				December 2023	---	---	---	---	22.58	---	---	---	---	---	---	---	---
CENERGY HOLDINGS (CB)				(Contract Size: 100 Securities, Physical Delivery)													
3.17	3.05	3.05	-3.02%	March 2023	3.11	3.11	3.07	3.08	3.08	---	---	---	3.22	---	9	90	5,283
				June 2023	---	---	---	---	3.18	---	---	---	---	---	---	---	---
				September 2023	---	---	---	---	3.19	---	---	---	---	---	---	---	---
				December 2023	---	---	---	---	3.21	---	---	---	---	---	---	---	---
ELLAKTOR (CR)				(Contract Size: 100 Securities, Physical Delivery)													
1.71	1.674	1.71	1.67%	March 2023	---	---	---	---	1.69	---	---	---	1.76	---	---	---	531
				June 2023	---	---	---	---	1.70	---	---	---	---	---	---	---	---
				September 2023	---	---	---	---	1.71	---	---	---	---	---	---	---	---
				December 2023	---	---	---	---	1.72	---	---	---	---	---	---	---	---
EUROBANK HOLDINGS (CR)				(Contract Size: 100 Securities, Physical Delivery)													
1.046	1.021	1.037	1.57%	March 2023	1.00	1.03	1.00	1.03	1.03	---	---	---	1.11	---	26	359	16,003
				June 2023	---	---	---	---	1.03	---	---	---	---	---	---	---	---
				September 2023	---	---	---	---	1.04	---	---	---	---	---	---	---	---
				December 2023	---	---	---	---	1.04	---	---	---	---	---	---	---	---
EYDAP S.A. (CR)				(Contract Size: 100 Securities, Physical Delivery)													
6.69	6.56	6.69	1.98%	March 2023	6.70	6.72	6.66	6.66	6.66	---	---	---	7.03	---	9	25	438
				June 2023	---	---	---	---	6.63	---	---	---	---	---	---	---	---
				September 2023	---	---	---	---	6.66	---	---	---	---	---	---	---	---
				December 2023	---	---	---	---	6.69	---	---	---	---	---	---	---	---

Derivatives notes

Fixing prices and final open positions can be retrieved from the following path <http://www.helex.gr/el/web/guest/statistics-end-of-day-derivatives>

Underlying Asset				Derivatives Market													
Price max	Price min	Closing price	change	Delivery Month	Open price	Price max	Price min	Last price	Closing price	Last Bid	Last Ask	Fixing price*	Life high	Life low	Trades	Volume	Open Interest
FOURLIS (CR)				(Contract Size: 100 Securities, Physical Delivery)													
3.35	3.275	3.295	-0.60%	March 2023	3.31	3.31	3.31	3.31	3.31	---	---		3.43	---	1	1	994
				June 2023	---	---	---	---	3.35	---	---		---	---	---	---	---
				September 2023	---	---	---	---	3.37	---	---		---	---	---	---	---
				December 2023	---	---	---	---	3.38	---	---		---	---	---	---	---
GEK TERNA (CR)				(Contract Size: 100 Securities, Physical Delivery)													
10.2	9.81	10	0.71%	March 2023	9.99	10.23	9.90	10.05	10.05	---	---		10.23	---	70	318	8,856
				June 2023	---	---	---	---	10.03	---	---		---	---	---	---	---
				September 2023	---	---	---	---	10.08	---	---		---	---	---	---	---
				December 2023	---	---	---	---	10.13	---	---		---	---	---	---	---
HELLENIC EXCHANGES-A.S.E. (CR)				(Contract Size: 100 Securities, Physical Delivery)													
3.175	3.11	3.14	-0.16%	March 2023	3.18	3.18	3.14	3.14	3.14	---	---		3.37	---	9	44	1,147
				June 2023	---	---	---	---	3.18	---	---		---	---	---	---	---
				September 2023	---	---	---	---	3.19	---	---		---	---	---	---	---
				December 2023	---	---	---	---	3.21	---	---		---	---	---	---	---
HELLENIQ ENERGY (CR)				(Contract Size: 100 Securities, Physical Delivery)													
7.6	7.49	7.5	-1.44%	March 2023	7.15	7.33	7.15	7.30	7.30	---	---		7.55	---	10	37	1,036
				June 2023	---	---	---	---	7.69	---	---		---	---	---	---	---
				September 2023	---	---	---	---	7.73	---	---		---	---	---	---	---
				December 2023	---	---	---	---	7.76	---	---		---	---	---	---	---
INTRACOM HOLDINGS (CR)				(Contract Size: 100 Securities, Physical Delivery)													
1.744	1.692	1.696	-0.23%	March 2023	1.72	1.72	1.72	1.72	1.72	---	---		1.79	---	1	2	3,261
				June 2023	---	---	---	---	1.72	---	---		---	---	---	---	---
				September 2023	---	---	---	---	1.73	---	---		---	---	---	---	---
				December 2023	---	---	---	---	1.73	---	---		---	---	---	---	---
JUMBO SA (CR)				(Contract Size: 100 Securities, Physical Delivery)													
15.87	15.43	15.8	0.38%	March 2023	15.51	15.80	15.51	15.74	15.74	---	---		16.01	---	18	30	482
				June 2023	---	---	---	---	15.90	---	---		---	---	---	---	---
				September 2023	---	---	---	---	15.98	---	---		---	---	---	---	---
				December 2023	---	---	---	---	16.06	---	---		---	---	---	---	---
LAMDA DEVELOPMENT SA (CR)				(Contract Size: 100 Securities, Physical Delivery)													
5.83	5.725	5.8	0.17%	March 2023	5.79	5.83	5.77	5.83	5.83	---	---		5.83	---	20	63	5,002
				June 2023	---	---	---	---	5.82	---	---		5.72	---	---	---	560
				September 2023	---	---	---	---	5.88	---	---		---	---	---	---	---
				December 2023	---	---	---	---	5.91	---	---		---	---	---	---	---

Derivatives notes

Fixing prices and final open positions can be retrieved from the following path <http://www.helex.gr/el/web/guest/statistics-end-of-day-derivatives>

Underlying Asset				Derivatives Market													
Price max	Price min	Closing price	change	Delivery Month	Open price	Price max	Price min	Last price	Closing price	Last Bid	Last Ask	Fixing price*	Life high	Life low	Trades	Volume	Open Interest
MARFIN INVESTMENT GROUP (CR)				(Contract Size: 100 Securities, Physical Delivery)													
0.048	0.0435	0.0449	-0.44%	March 2023	0.046	0.047	0.044	0.044	0.044	---	---	---	0.050	---	34	1,601	17,882
				June 2023	---	---	---	---	0.046	---	---	---	---	---	---	---	---
				September 2023	---	---	---	---	0.046	---	---	---	---	---	---	---	---
				December 2023	---	---	---	---	0.046	---	---	---	---	---	---	---	---
MOTOR OIL (CR)				(Contract Size: 100 Securities, Physical Delivery)													
21.1	20.36	21.1	2.33%	March 2023	20.95	21.03	20.95	21.03	21.03	---	---	---	21.41	---	8	13	684
				June 2023	---	---	---	---	20.83	---	---	---	---	---	---	---	---
				September 2023	---	---	---	---	20.93	---	---	---	---	---	---	---	---
				December 2023	---	---	---	---	21.04	---	---	---	---	---	---	---	---
MYTILINEOS (CR)				(Contract Size: 100 Securities, Physical Delivery)													
19.49	19.13	19.33	-0.97%	March 2023	19.19	19.28	19.09	19.09	19.09	---	---	---	19.98	---	10	28	1,447
				June 2023	---	---	---	---	19.72	---	---	---	---	---	---	---	---
				September 2023	---	---	---	---	19.82	---	---	---	---	---	---	---	---
				December 2023	---	---	---	---	19.91	---	---	---	---	---	---	---	---
NATIONAL BANK (CR)				(Contract Size: 100 Securities, Physical Delivery)													
3.756	3.68	3.753	1.43%	March 2023	3.71	3.73	3.68	3.68	3.68	---	---	---	3.94	---	52	248	15,269
				June 2023	---	---	---	---	3.74	---	---	---	---	---	---	---	---
				September 2023	---	---	---	---	3.76	---	---	---	---	---	---	---	---
				December 2023	---	---	---	---	3.77	---	---	---	---	---	---	---	---
OPAP (CR)				(Contract Size: 100 Securities, Physical Delivery)													
13.28	13.15	13.2	-0.38%	March 2023	13.24	13.24	13.24	13.24	13.24	---	---	---	13.42	---	1	5	1,074
				June 2023	---	---	---	---	13.38	---	---	---	---	---	---	---	---
				September 2023	---	---	---	---	13.45	---	---	---	---	---	---	---	---
				December 2023	---	---	---	---	13.52	---	---	---	---	---	---	---	---
OTE (CR)				(Contract Size: 100 Securities, Physical Delivery)													
14.87	14.6	14.87	1.29%	March 2023	14.87	14.92	14.75	14.92	14.92	---	---	---	15.12	---	31	164	6,484
				June 2023	---	---	---	---	14.83	---	---	---	---	---	---	---	---
				September 2023	---	---	---	---	14.90	---	---	---	---	---	---	---	---
				December 2023	---	---	---	---	14.98	---	---	---	---	---	---	---	---
P.P.A. S.A. (CR)				(Contract Size: 100 Securities, Physical Delivery)													
16.04	15.66	15.82	-0.50%	March 2023	15.90	15.90	15.90	15.90	15.90	---	---	---	16.28	---	1	2	505
				June 2023	---	---	---	---	16.06	---	---	---	---	---	---	---	---
				September 2023	---	---	---	---	16.14	---	---	---	---	---	---	---	---
				December 2023	---	---	---	---	16.22	---	---	---	---	---	---	---	---

Derivatives notes

Fixing prices and final open positions can be retrieved from the following path <http://www.helex.gr/el/web/guest/statistics-end-of-day-derivatives>

Underlying Asset				Derivatives Market													
Price max	Price min	Closing price	change	Delivery Month	Open price	Price max	Price min	Last price	Closing price	Last Bid	Last Ask	Fixing price*	Life high	Life low	Trades	Volume	Open Interest
PIRAEUS FINANCIAL HOLD (CR)				(Contract Size: 100 Securities, Physical Delivery)													
1.39	1.359	1.3735	0.99%	March 2023	1.38	1.39	1.36	1.38	1.38	---	---		1.48	---	70	831	46,210
				June 2023	---	---	---	---	1.37	---	---		---	---	---	---	---
				September 2023	---	---	---	---	1.38	---	---		---	---	---	---	---
				December 2023	---	---	---	---	1.39	---	---		---	---	---	---	---
PPC (CR)				(Contract Size: 100 Securities, Physical Delivery)													
6.575	6.48	6.55	0.31%	March 2023	6.53	6.60	6.50	6.50	6.50	---	---		6.88	---	75	377	23,532
				June 2023	---	---	---	---	6.60	---	---		---	---	---	---	---
				September 2023	---	---	---	---	6.63	---	---		---	---	---	---	---
				December 2023	---	---	---	---	6.66	---	---		---	---	---	---	---
TERNA ENERGY (CR)				(Contract Size: 100 Securities, Physical Delivery)													
20.28	19.87	20.14	0.70%	March 2023	20.13	20.35	20.13	20.16	20.16	---	---		20.57	---	36	105	6,947
				June 2023	---	---	---	---	20.20	---	---		---	---	---	---	---
				September 2023	---	---	---	---	20.30	---	---		---	---	---	---	---
				December 2023	---	---	---	---	20.40	---	---		---	---	---	---	---
TITAN CEMENT (CB)				(Contract Size: 100 Securities, Physical Delivery)													
12.32	12.14	12.18	-0.33%	March 2023	---	---	---	---	12.24	---	---		12.39	---	---	---	935
				June 2023	---	---	---	---	12.34	---	---		---	---	---	---	---
				September 2023	---	---	---	---	12.41	---	---		---	---	---	---	---
				December 2023	---	---	---	---	12.47	---	---		---	---	---	---	---
VIOHALCO SA/NV (CB)				(Contract Size: 100 Securities, Physical Delivery)													
4.21	4.015	4.015	-2.79%	March 2023	4.20	4.21	4.05	4.08	4.08	---	---		4.29	---	23	68	4,346
				June 2023	---	---	---	---	4.17	---	---		---	---	---	---	---
				September 2023	---	---	---	---	4.19	---	---		---	---	---	---	---
				December 2023	---	---	---	---	4.21	---	---		---	---	---	---	---

Derivatives notes

Fixing prices and final open positions can be retrieved from the following path <http://www.helex.gr/el/web/guest/statistics-end-of-day-derivatives>

Daily Official List															Year: 143 Trading Day No: 240																				
Section 7: Index Options															Monday, 19 December, 2022																				
FTSE/Athex Large Cap															(Trade Unit: 1 Index Point x 2€ - Exercise Style: European, Cash Settlement)																				
Call Options															Put Options																				
January 2023								February 2023							Other Months			January 2023								February 2023							Other Months		
Exerise Price	Open price	Price max	Price min	Last price	Closing price	Volume	Open Interest	Open price	Price max	Price min	Last price	Closing price	Volume	Open Interest	Volume	Open Interest	Open price	Price max	Price min	Last price	Closing price	Volume	Open Interest	Open price	Price max	Price min	Last price	Closing price	Volume	Open Interest	Volume	Open Interest	Exerise Price		
1,725	-	-	-	-	-	-	-	-	-	-	-	-	-	-	-	-	-	-	-	-	-	-	-	-	-	-	-	-	-	-	-	1,725			
1,750	-	-	-	-	-	-	-	-	-	-	-	-	-	-	-	-	-	-	-	-	-	-	-	-	-	-	-	-	-	-	-	1,750			
1,775	-	-	-	-	-	-	-	-	-	-	-	-	-	-	-	-	-	-	-	-	-	-	-	-	-	-	-	-	-	-	-	1,775			
1,800	-	-	-	-	-	-	-	-	-	-	-	-	-	-	-	-	-	-	-	-	-	-	-	-	-	-	-	-	-	-	-	1,800			
1,825	-	-	-	-	-	-	-	-	-	-	-	-	-	-	-	-	-	-	-	-	-	-	-	-	-	-	-	-	-	-	-	1,825			
1,850	-	-	-	-	-	-	-	-	-	-	-	-	-	-	-	-	-	-	-	-	-	-	-	-	-	-	-	-	-	-	-	1,850			
1,875	-	-	-	-	-	-	-	-	-	-	-	-	-	-	-	-	-	-	-	-	-	-	-	-	-	-	-	-	-	-	-	1,875			
1,900	0.00	0.00	0.00	-	306.00	-	-	-	-	-	-	-	-	-	-	-	0.00	0.00	0.00	-	0.99	-	-	-	-	-	-	-	-	-	-	-	1,900		
1,925	0.00	0.00	0.00	-	282.00	-	-	-	-	-	-	-	-	-	-	-	0.00	0.00	0.00	-	1.60	-	-	-	-	-	-	-	-	-	-	-	1,925		
1,950	0.00	0.00	0.00	-	258.00	-	-	0.00	0.00	0.00	-	262.00	-	-	-	-	0.00	0.00	0.00	-	2.60	-	-	0.00	0.00	0.00	-	9.40	-	-	-	-	1,950		
1,975	0.00	0.00	0.00	-	234.00	-	-	0.00	0.00	0.00	-	241.00	-	-	-	-	0.00	0.00	0.00	-	4.00	-	-	0.00	0.00	0.00	-	12.50	-	-	-	-	1,975		
2,000	0.00	0.00	0.00	-	211.00	-	-	0.00	0.00	0.00	-	219.00	-	-	-	-	0.00	0.00	0.00	-	5.90	-	-	0.00	0.00	0.00	-	16.25	-	-	-	-	2,000		
2,050	0.00	0.00	0.00	-	168.00	-	-	0.00	0.00	0.00	-	180.00	-	-	-	-	0.00	0.00	0.00	-	12.00	-	-	0.00	0.00	0.00	-	26.25	-	-	-	-	2,050		
2,100	0.00	0.00	0.00	-	128.00	-	20	0.00	0.00	0.00	-	144.00	-	-	-	-	22.50	0.00	22.50	22.50	22.50	2	136	0.00	0.00	0.00	-	40.25	-	-	-	-	2,100		
2,150	0.00	0.00	0.00	-	94.00	-	40	0.00	0.00	0.00	-	112.00	-	-	-	-	0.00	0.00	0.00	-	38.25	-	83	0.00	0.00	0.00	-	58.50	-	-	-	-	2,150		
2,200	0.00	0.00	0.00	-	65.50	-	40	0.00	0.00	0.00	-	85.50	-	-	-	-	0.00	0.00	0.00	-	60.00	-	43	0.00	0.00	0.00	-	81.50	-	-	-	-	2,200		
2,250	0.00	0.00	0.00	-	43.75	-	121	0.00	0.00	0.00	-	63.50	-	-	-	-	0.00	0.00	0.00	-	88.00	-	61	109.00	109.00	109.00	109.00	109.00	1	-	-	-	2,250		
2,300	0.00	0.00	0.00	-	27.75	-	5	0.00	0.00	0.00	-	46.00	-	-	-	-	0.00	0.00	0.00	-	122.00	-	20	0.00	0.00	0.00	-	142.00	-	-	-	-	2,300		
2,350	0.00	0.00	0.00	-	16.75	-	-	0.00	0.00	0.00	-	32.50	-	-	-	-	0.00	0.00	0.00	-	161.00	-	-	0.00	0.00	0.00	-	178.00	-	-	-	-	2,350		
2,400	0.00	0.00	0.00	-	9.60	-	-	0.00	0.00	0.00	-	22.25	-	-	-	-	0.00	0.00	0.00	-	203.00	-	-	0.00	0.00	0.00	-	218.00	-	-	-	-	2,400		
2,450	0.00	0.00	0.00	-	5.20	-	-	0.00	0.00	0.00	-	15.00	-	-	-	-	0.00	0.00	0.00	-	249.00	-	-	0.00	0.00	0.00	-	260.00	-	-	-	-	2,450		
2,500	0.00	0.00	0.00	-	2.70	-	-	0.00	0.00	0.00	-	9.80	-	-	-	-	0.00	0.00	0.00	-	296.00	-	-	0.00	0.00	0.00	-	305.00	-	-	-	-	2,500		
2,550	-	-	-	-	-	-	-	-	-	-	-	-	-	-	-	-	-	-	-	-	-	-	-	-	-	-	-	-	-	-	-	2,550			
Totals:						0	226							0	0	0	0							2	343							1	0	0	0
Number of Trades:						0						0						1						1						0					

Hellenic Exchanges – Athens Stock Exchange S.A.

Market Analysis & Communication Unit

Section 7, 1/1

ALPHA SERVICES HOLD (CR)

(Contract Size: 100 Securities, Exercise Style: American, Physical Delivery)

Call Options															Put Options																				
January 2023								February 2023								Other Months		January 2023								February 2023								Other Months	
Exerise Price	Open price	Price max	Price min	Last price	Closing price	Volume	Open Interest	Open price	Price max	Price min	Last price	Closing price	Volume	Open Interest	Volume	Open Interest	Open price	Price max	Price min	Last price	Closing price	Volume	Open Interest	Open price	Price max	Price min	Last price	Closing price	Volume	Open Interest	Volume	Open Interest	Exerise Price		
0.500						-	-							-	-							-	-					-	-			0.005			
0.550						-	-							-	-							-	-					-	-			0.006			
0.600						-	-							-	-							-	-					-	-			0.006			
0.650	0.000	0.000	0.000		0.338	-	-							-	-		0.000	0.000	0.000		0.003	-	-					-	-			0.007			
0.700	0.000	0.000	0.000		0.289	-	-	0.000	0.000	0.000		0.292	-	-			0.000	0.000	0.000		0.001	-	-	0.000	0.000	0.000		0.002	-	-			0.007		
0.750	0.000	0.000	0.000		0.240	-	-	0.000	0.000	0.000		0.245	-	-			0.000	0.000	0.000		0.001	-	-	0.000	0.000	0.000		0.006	-	-			0.008		
0.800	0.000	0.000	0.000		0.193	-	-	0.000	0.000	0.000		0.202	-	-			0.000	0.000	0.000		0.004	-	-	0.000	0.000	0.000		0.012	-	-			0.008		
0.850	0.000	0.000	0.000		0.149	-	-	0.000	0.000	0.000		0.162	-	-			0.000	0.000	0.000		0.010	-	-	0.000	0.000	0.000		0.022	-	-			0.009		
0.900	0.000	0.000	0.000		0.110	-	-	0.000	0.000	0.000		0.127	-	-			0.000	0.000	0.000		0.021	-	-	0.000	0.000	0.000		0.037	-	-			0.009		
0.950	0.000	0.000	0.000		0.077	-	-	0.000	0.000	0.000		0.097	-	-			0.000	0.000	0.000		0.039	-	-	0.000	0.000	0.000		0.057	-	-			0.010		
1.000	0.000	0.000	0.000		0.052	-	-	0.000	0.000	0.000		0.072	-	-			0.000	0.000	0.000		0.063	-	-	0.000	0.000	0.000		0.082	-	-			0.010		
1.100	0.000	0.000	0.000		0.020	-	30	0.000	0.000	0.000		0.037	-	-			0.000	0.000	0.000		0.132	-	-	0.000	0.000	0.000		0.147	-	-			0.011		
1.200	0.000	0.000	0.000		0.007	-	-	0.000	0.000	0.000		0.018	-	-			0.000	0.000	0.000		0.218	-	-	0.000	0.000	0.000		0.228	-	-			0.012		
1.300	0.000	0.000	0.000		0.002	-	-	0.000	0.000	0.000		0.008	-	-			0.000	0.000	0.000		0.314	-	-	0.000	0.000	0.000		0.318	-	-			0.013		
1.400	0.000	0.000	0.000		0.001	-	-	0.000	0.000	0.000		0.003	-	-			0.000	0.000	0.000		0.413	-	-	0.000	0.000	0.000		0.414	-	-			0.014		
1.500	0.000	0.000	0.000		0.001	-	-	0.000	0.000	0.000		0.001	-	-			0.000	0.000	0.000		0.513	-	-	0.000	0.000	0.000		0.513	-	-			0.015		
1.600	0.000	0.000	0.000		0.001	-	-	0.000	0.000	0.000		0.001	-	-			0.000	0.000	0.000		0.613	-	-	0.000	0.000	0.000		0.613	-	-			0.016		
1.700						-	-							-	-							-	-					-	-			0.017			
Totals:						0	30							0	0	0	0							0	0							0	0		
Number of Trades:						0								0		0							0.00								0				

NATIONAL BANK (CR)

(Contract Size: 100 Securities, Exercise Style: American, Physical Delivery)

Call Options																Put Options																				
January 2023								February 2023								Other Months		January 2023								February 2023								Other Months		
Exerise Price	Open price	Price max	Price min	Last price	Closing price	Volume	Open Interest	Open price	Price max	Price min	Last price	Closing price	Volume	Open Interest	Volume	Open Interest	Open price	Price max	Price min	Last price	Closing price	Volume	Open Interest	Open price	Price max	Price min	Last price	Closing price	Volume	Open Interest	Volume	Open Interest	Exerise Price			
1.900						-	-							-	-							-	-						-	-		0.019				
2.000						-	-							-	-							-	-						-	-		0.020				
2.200						-	-							-	-							-	-						-	-		0.022				
2.400	0.000	0.000	0.000		1.30	-	-							-	-		0.000	0.000	0.000		0.001	-	-					-	-			0.024				
2.600	0.000	0.000	0.000		1.11	-	-	0.000	0.000	0.000		1.11	-	-			0.000	0.000	0.000		0.001	-	-	0.000	0.000	0.000		0.001	-	-			0.026			
2.800	0.000	0.000	0.000		0.906	-	-	0.000	0.000	0.000		0.916	-	-			0.000	0.000	0.000		0.001	-	-	0.000	0.000	0.000		0.006	-	-			0.028			
3.000	0.000	0.000	0.000		0.710	-	-	0.000	0.000	0.000		0.729	-	-			0.000	0.000	0.000		0.005	-	-	0.000	0.000	0.000		0.018	-	-			0.030			
3.200	0.000	0.000	0.000		0.524	-	-	0.000	0.000	0.000		0.557	-	-			0.000	0.000	0.000		0.018	-	-	0.000	0.000	0.000		0.046	-	-			0.032			
3.400	0.000	0.000	0.000		0.359	-	-	0.000	0.000	0.000		0.405	-	-			0.000	0.000	0.000		0.052	-	-	0.000	0.000	0.000		0.094	-	-			0.034			
3.600	0.000	0.000	0.000		0.224	-	-	0.000	0.000	0.000		0.283	-	-			0.000	0.000	0.000		0.117	-	-	0.000	0.000	0.000		0.171	-	-			0.036			
3.800	0.000	0.000	0.000		0.127	-	-	0.000	0.000	0.000		0.187	-	-			0.000	0.000	0.000		0.221	-	-	0.000	0.000	0.000		0.275	-	-			0.038			
4.000	0.000	0.000	0.000		0.066	-	-	0.000	0.000	0.000		0.118	-	-			0.000	0.000	0.000		0.360	-	-	0.000	0.000	0.000		0.406	-	-			0.040			
4.400	0.000	0.000	0.000		0.013	-	-	0.000	0.000	0.000		0.040	-	-			0.000	0.000	0.000		0.708	-	-	0.000	0.000	0.000		0.729	-	-			0.044			
4.800	0.000	0.000	0.000		0.002	-	-	0.000	0.000	0.000		0.012	-	-			0.000	0.000	0.000		1.10	-	-	0.000	0.000	0.000		1.10	-	-			0.048			
5.200	0.000	0.000	0.000		0.001	-	-	0.000	0.000	0.000		0.003	-	-			0.000	0.000	0.000		1.50	-	-	0.000	0.000	0.000		1.50	-	-			0.052			
5.600	0.000	0.000	0.000		0.001	-	-	0.000	0.000	0.000		0.001	-	-			0.000	0.000	0.000		1.90	-	-	0.000	0.000	0.000		1.90	-	-			0.056			
6.000	0.000	0.000	0.000		0.001	-	-	0.000	0.000	0.000		0.001	-	-			0.000	0.000	0.000		2.30	-	-	0.000	0.000	0.000		2.30	-	-			0.060			
Totals:						0	0						0	0	0	0						0	0					0	0	0	0					
Number of Trades:						0							0		0							0.00						0		0						

OPAP (CR)

(Contract Size: 100 Securities, Exercise Style: American, Physical Delivery)

Call Options																Put Options																				
Exerise Price	January 2023							February 2023							Other Months		January 2023										February 2023							Other Months		Exerise Price
	Open price	Price max	Price min	Last price	Closing price	Volume	Open Interest	Open price	Price max	Price min	Last price	Closing price	Volume	Open Interest	Volume	Open Interest	Open price	Price max	Price min	Last price	Closing price	Volume	Open Interest	Open price	Price max	Price min	Last price	Closing price	Volume	Open Interest	Volume	Open Interest				
8.800	0.000	0.000	0.000		4.47	-	-						-	-			0.000	0.000	0.000		0.001	-	-					-	-			0.088				
9.200	0.000	0.000	0.000		4.07	-	-	0.000	0.000	0.000		4.08	-	-			0.000	0.000	0.000		0.001	-	-	0.000	0.000	0.000		0.001	-	-			0.092			
9.600	0.000	0.000	0.000		3.67	-	-	0.000	0.000	0.000		3.68	-	-			0.000	0.000	0.000		0.001	-	-	0.000	0.000	0.000		0.001	-	-			0.096			
10.000	0.000	0.000	0.000		3.27	-	-	0.000	0.000	0.000		3.29	-	-			0.000	0.000	0.000		0.001	-	-	0.000	0.000	0.000		0.002	-	-			0.100			
11.000	0.000	0.000	0.000		2.27	-	-	0.000	0.000	0.000		2.31	-	-			0.000	0.000	0.000		0.003	-	-	0.000	0.000	0.000		0.022	-	-			0.110			
12.000	0.000	0.000	0.000		1.33	-	-	0.000	0.000	0.000		1.42	-	-			0.000	0.000	0.000		0.055	-	-	0.000	0.000	0.000		0.132	-	-			0.120			
13.000	0.265	0.270	0.265	0.270	0.270	5	3	0.275	0.275	0.275	0.275	0.275	5	-			0.101	0.101	0.101	0.101	0.101	5	-	0.101	0.101	0.101	0.101	0.101	5	0			0.130			
14.000	0.000	0.000	0.000		0.176	-	3	0.101	0.101	0.101	0.101	0.101	5	-			0.000	0.000	0.000		0.904	-	-	0.000	0.000	0.000		1.02	-	-			0.140			
15.000	0.000	0.000	0.000		0.035	-	-	0.000	0.000	0.000		0.106	-	-			0.000	0.000	0.000		1.77	-	-	0.000	0.000	0.000		1.82	-	-			0.150			
16.000	0.000	0.000	0.000		0.004	-	-	0.000	0.000	0.000		0.030	-	-			0.000	0.000	0.000		2.75	-	-	0.000	0.000	0.000		2.76	-	-			0.160			
17.000	0.000	0.000	0.000		0.001	-	-	0.000	0.000	0.000		0.007	-	-			0.000	0.000	0.000		3.75	-	-	0.000	0.000	0.000		3.75	-	-			0.170			
18.000	0.000	0.000	0.000		0.001	-	-	0.000	0.000	0.000		0.001	-	-			0.000	0.000	0.000		4.75	-	-	0.000	0.000	0.000		4.75	-	-			0.180			
19.000						-	-						-	-								-	-					-	-			0.190				
20.000						-	-						-	-								-	-					-	-			0.200				
Totals:						5	6						10	0	0	0						5	0					5	0	0	0					
Number of Trades:							2						2		0							2.00						1		0						

OTE (CR)

(Contract Size: 100 Securities, Exercise Style: American, Physical Delivery)

Call Options																Put Options																				
January 2023								February 2023								Other Months		January 2023								February 2023								Other Months		
Exerise Price	Open price	Price max	Price min	Last price	Closing price	Volume	Open Interest	Open price	Price max	Price min	Last price	Closing price	Volume	Open Interest	Volume	Open Interest	Open price	Price max	Price min	Last price	Closing price	Volume	Open Interest	Open price	Price max	Price min	Last price	Closing price	Volume	Open Interest	Volume	Open Interest	Exerise Price			
9.600						-	-							-	-								-	-					-	-			0.096			
10.000	0.000	0.000	0.000		4.70	-	-	0.000	0.000	0.000		4.72	-	-			0.000	0.000	0.000		0.001	-	-	0.000	0.000	0.000		0.001	-	-			0.100			
11.000	0.000	0.000	0.000		3.70	-	-	0.000	0.000	0.000		3.72	-	-			0.000	0.000	0.000		0.001	-	-	0.000	0.000	0.000		0.002	-	-			0.110			
12.000	0.000	0.000	0.000		2.71	-	-	0.000	0.000	0.000		2.74	-	-			0.000	0.000	0.000		0.003	-	-	0.000	0.000	0.000		0.022	-	-			0.120			
13.000	0.000	0.000	0.000		1.74	-	-	0.000	0.000	0.000		1.84	-	-			0.000	0.000	0.000		0.038	-	-	0.000	0.000	0.000		0.112	-	-			0.130			
14.000	0.000	0.000	0.000		0.921	-	-	0.000	0.000	0.000		1.09	-	-			0.101	0.101	0.101	0.101	0.101	5	12	0.101	0.101	0.101	0.101	0.101	5	0			0.140			
15.000	0.101	0.101	0.101	0.101	0.101	5	3	0.101	0.101	0.101	0.101	0.101	5	-			0.340	0.340	0.340	0.340	0.340	5	-	0.345	0.345	0.345	0.345	0.345	5	0			0.150			
16.000	0.000	0.000	0.000		0.114	-	35	0.101	0.101	0.101	0.101	0.101	5	-			0.000	0.000	0.000		1.41	-	-	0.000	0.000	0.000		1.52	-	-			0.160			
17.000	0.000	0.000	0.000		0.024	-	35	0.000	0.000	0.000		0.093	-	-			0.000	0.000	0.000		2.33	-	-	0.000	0.000	0.000		2.38	-	-			0.170			
18.000	0.000	0.000	0.000		0.004	-	-	0.000	0.000	0.000		0.030	-	-			0.000	0.000	0.000		3.32	-	-	0.000	0.000	0.000		3.33	-	-			0.180			
19.000	0.000	0.000	0.000		0.001	-	-	0.000	0.000	0.000		0.008	-	-			0.000	0.000	0.000		4.32	-	-	0.000	0.000	0.000		4.32	-	-			0.190			
20.000	0.000	0.000	0.000		0.001	-	-	0.000	0.000	0.000		0.002	-	-			0.000	0.000	0.000		5.32	-	-	0.000	0.000	0.000		5.32	-	-			0.200			
22.000	0.000	0.000	0.000		0.001	-	-						-	-			0.000	0.000	0.000		7.32	-	-					-	-			0.220				
24.000						-	-						-	-								-	-					-	-			0.240				
26.000						-	-						-	-								-	-					-	-			0.260				
Totals:						5	73						10	0	0	0						5	12					10	0	0	0					
Number of Trades:							1							2		0						2.00						2		0						

PIRAEUS FINANCIAL HOLD (CR)

(Contract Size: 100 Securities, Exercise Style: American, Physical Delivery)

Call Options																	Put Options																			
January 2023								February 2023								Other Months		January 2023								February 2023								Other Months		
Exercise Price	Open price	Price max	Price min	Last price	Closing price	Volume	Open Interest	Open price	Price max	Price min	Last price	Closing price	Volume	Open Interest	Volume	Open Interest	Open price	Price max	Price min	Last price	Closing price	Volume	Open Interest	Open price	Price max	Price min	Last price	Closing price	Volume	Open Interest	Volume	Open Interest	Exercise Price			
0.500						-	-							-	-								-	-					-	-			0.005			
0.550						-	-							-	-								-	-					-	-			0.006			
0.600						-	-							-	-								-	-					-	-			0.006			
0.650						-	-							-	-								-	-					-	-			0.007			
0.700						-	-							-	-								-	-					-	-			0.007			
0.750						-	-							-	-								-	-					-	-			0.008			
0.800						-	-							-	-								-	-					-	-			0.008			
0.850	0.000	0.000	0.000		0.512	-	-							-	-			0.000	0.000	0.000		0.001	-	-					-	-			0.009			
0.900	0.000	0.000	0.000		0.462	-	-	0.000	0.000	0.000		0.464	-	-			0.000	0.000	0.000		0.001	-	-	0.000	0.000	0.000		0.001	-	-			0.009			
0.950	0.000	0.000	0.000		0.412	-	-	0.000	0.000	0.000		0.415	-	-			0.000	0.000	0.000		0.001	-	-	0.000	0.000	0.000		0.002	-	-			0.010			
1.000	0.000	0.000	0.000		0.363	-	-	0.000	0.000	0.000		0.367	-	-			0.000	0.000	0.000		0.001	-	-	0.000	0.000	0.000		0.004	-	-			0.010			
1.100	0.000	0.000	0.000		0.266	-	-	0.000	0.000	0.000		0.277	-	-			0.000	0.000	0.000		0.004	-	-	0.000	0.000	0.000		0.013	-	-			0.011			
1.200	0.000	0.000	0.000		0.179	-	50	0.000	0.000	0.000		0.198	-	-			0.000	0.000	0.000		0.017	-	-	0.000	0.000	0.000		0.034	-	-			0.012			
1.300	0.000	0.000	0.000		0.108	-	7	0.000	0.000	0.000		0.133	-	-			0.000	0.000	0.000		0.046	-	-	0.000	0.000	0.000		0.069	-	-			0.013			
1.400	0.000	0.000	0.000		0.058	-	10	0.000	0.000	0.000		0.085	-	-			0.000	0.000	0.000		0.096	-	3	0.000	0.000	0.000		0.120	-	-			0.014			
1.500	0.000	0.000	0.000		0.028	-	-	0.000	0.000	0.000		0.051	-	-			0.000	0.000	0.000		0.166	-	-	0.000	0.000	0.000		0.186	-	-			0.015			
1.600	0.000	0.000	0.000		0.012	-	-	0.000	0.000	0.000		0.029	-	-			0.000	0.000	0.000		0.250	-	-	0.000	0.000	0.000		0.265	-	-			0.016			
1.700	0.000	0.000	0.000		0.005	-	-	0.000	0.000	0.000		0.016	-	-			0.000	0.000	0.000		0.343	-	-	0.000	0.000	0.000		0.352	-	-			0.017			
1.800	0.000	0.000	0.000		0.002	-	-	0.000	0.000	0.000		0.008	-	-			0.000	0.000	0.000		0.440	-	-	0.000	0.000	0.000		0.445	-	-			0.018			
1.900	0.000	0.000	0.000		0.001	-	-	0.000	0.000	0.000		0.004	-	-			0.000	0.000	0.000		0.540	-	-	0.000	0.000	0.000		0.541	-	-			0.019			
2.000	0.000	0.000	0.000		0.001	-	-	0.000	0.000	0.000		0.002	-	-			0.000	0.000	0.000		0.640	-	-	0.000	0.000	0.000		0.640	-	-			0.020			
Totals:						0	67						0	0	0	0						0	3					0	0	0	0					
Number of Trades:						0							0		0							0.00					0		0							

PPC (CR)

(Contract Size: 100 Securities, Exercise Style: American, Physical Delivery)

Call Options																Put Options																				
January 2023								February 2023								Other Months		January 2023								February 2023								Other Months		
Exercise Price	Open price	Price max	Price min	Last price	Closing price	Volume	Open Interest	Open price	Price max	Price min	Last price	Closing price	Volume	Open Interest	Volume	Open Interest	Open price	Price max	Price min	Last price	Closing price	Volume	Open Interest	Open price	Price max	Price min	Last price	Closing price	Volume	Open Interest	Volume	Open Interest	Exercise Price			
3.400						-	-							-	-								-	-								0.034				
3.600						-	-							-	-								-	-								0.036				
3.800						-	-							-	-								-	-								0.038				
4.000	0.000	0.000	0.000		2.54	-	-							-	-		0.000	0.000	0.000		0.001	-	-									0.040				
4.400	0.000	0.000	0.000		2.14	-	-	0.000	0.000	0.000		2.15	-	-		0.000	0.000	0.000		0.001	-	-	0.000	0.000	0.000		0.002	-	-			0.044				
4.800	0.000	0.000	0.000		1.74	-	-	0.000	0.000	0.000		1.76	-	-		0.000	0.000	0.000		0.001	-	-	0.000	0.000	0.000		0.011	-	-			0.048				
5.200	0.000	0.000	0.000		1.35	-	-	0.000	0.000	0.000		1.38	-	-		0.000	0.000	0.000		0.009	-	-	0.000	0.000	0.000		0.036	-	-			0.052				
5.600	0.000	0.000	0.000		0.979	-	-	0.000	0.000	0.000		1.04	-	-		0.000	0.000	0.000		0.038	-	-	0.000	0.000	0.000		0.093	-	-			0.056				
6.000	0.000	0.000	0.000		0.654	-	62	0.000	0.000	0.000		0.747	-	-		0.000	0.000	0.000		0.112	-	-	0.000	0.000	0.000		0.197	-	-			0.060				
6.400	0.000	0.000	0.000		0.397	-	-	0.000	0.000	0.000		0.510	-	-		0.000	0.000	0.000		0.255	-	-	0.000	0.000	0.000		0.359	-	-			0.064				
6.800	0.000	0.000	0.000		0.217	-	28	0.338	0.338	0.338	0.338	0.338	3	-		0.000	0.000	0.000		0.475	-	-	0.000	0.000	0.000		0.577	-	-			0.068				
7.200	0.000	0.000	0.000		0.107	-	-	0.000	0.000	0.000		0.201	-	-		0.000	0.000	0.000		0.766	-	-	0.000	0.000	0.000		0.850	-	-			0.072				
7.600	0.000	0.000	0.000		0.048	-	-	0.000	0.000	0.000		0.119	-	-		0.000	0.000	0.000		1.11	-	-	0.000	0.000	0.000		1.17	-	-			0.076				
8.000	0.000	0.000	0.000		0.020	-	-	0.000	0.000	0.000		0.067	-	-		0.000	0.000	0.000		1.48	-	-	0.000	0.000	0.000		1.52	-	-			0.080				
8.400	0.000	0.000	0.000		0.007	-	-	0.000	0.000	0.000		0.037	-	-		0.000	0.000	0.000		1.87	-	-	0.000	0.000	0.000		1.89	-	-			0.084				
8.800	0.000	0.000	0.000		0.003	-	-	0.000	0.000	0.000		0.019	-	-		0.000	0.000	0.000		2.27	-	-	0.000	0.000	0.000		2.28	-	-			0.088				
9.200						-	-							-	-								-	-								0.092				
9.600						-	-							-	-								-	-								0.096				
10.000						-	-							-	-								-	-								0.100				
11.000						-	-							-	-								-	-								0.110				
Totals:						0	90						3	0	0	0						0	0					0	0	0	0					
Number of Trades:							0						1		0							0.00					0		0							

Lending Products	Underlying Title	Multilateral Transactions[1]					Bilateral Transactions[2]		Stock Borrowing through OTC (volume)[3]
		Open Interest[5]	Volume(Offered)	Average Weighted	Transactions volume	Average Weighted	Transactions Volume	Average Weighted	Transactions Volume
ADMIEBOR	ADMIE (IPTO) HOLDING S.A. (CR)	---	---	---	---	---	---	---	112,684
AEGNBOR	AEGEAN AIRLINES (CR)	4,596	---	---	---	---	---	---	53,525
ALPHABOR	ALPHA SERVICES HOLD (CR)	---	---	---	---	---	---	---	58,795,914
ALMYBOR	ALUMIL (CR)	---	---	---	---	---	---	---	---
OTOELBOR	AUTOHELLAS SA (CR)	---	---	---	---	---	6,000	6.50%	51,316
EEEBOR	CC HBC AG (CR)	6,714	---	---	870	5.39%	---	---	35,608
CENERBOR	CENERGY HOLDINGS (CB)	---	---	---	---	---	---	---	---
ELLAKTORBOR	ELLAKTOR (CR)	35,503	---	---	---	---	---	---	5,504
ELHABOR	ELVALHALCOR (CR)	25,188	---	---	---	---	---	---	64,887
EUROBBOR	EUROBANK HOLDINGS (CR)	424,421	---	---	125,000	5.27%	---	---	34,337,617
EYDAPBOR	EYDAP S.A. (CR)	8,563	---	---	---	---	---	---	210,366
FFGRPBOR	FOLLI FOLLIE (CR)	---	---	---	---	---	---	---	900,530
FOYRKBOR	FOURLIS (CR)	---	---	---	---	---	---	---	28,850
GEKTERNABOR	GEK TERNA (CR)	---	---	---	---	---	---	---	10,157
SARBOR	GR. SARANTIS S.A. (CR)	1,945	---	---	---	---	---	---	61,278
EXAEBOR	HELLENIC EXCHANGES-A.S.E. (CR)	19,000	---	---	---	---	---	---	155,147
ELPEBOR	HELLENIQ ENERGY (CR)	---	---	---	---	---	---	---	505,984
INTRKBOR	INTRACOM HOLDINGS (CR)	---	---	---	---	---	---	---	---
BELABOR	JUMBO SA (CR)	35,251	---	---	28,300	5.45%	---	---	408,952
LAMDABOR	LAMDA DEVELOPMENT SA (CR)	---	---	---	---	---	---	---	430,695
MIGBOR	MARFIN INVESTMENT GROUP (CR)	42,000	---	---	---	---	---	---	794,474
MOHBOR	MOTOR OIL (CR)	13,788	---	---	---	---	---	---	315,208
MYTILBOR	MYTILINEOS (CR)	49,393	---	---	15,700	3.75%	---	---	166,717
ETEBOR	NATIONAL BANK (CR)	105,859	---	---	---	---	---	---	10,003,071
OPAPBOR	OPAP (CR)	17,500	---	---	15,817	3.75%	2,600	0.01%	1,607,913
HTOBOR	OTE (CR)	3,000	---	---	---	---	---	---	955,026
PPABOR	P.P.A. S.A. (CR)	2,114	---	---	---	---	---	---	65,487
TPEIRBOR	PIRAEUS FINANCIAL HOLD (CR)	6,000	---	---	---	---	---	---	1,419,895
PLAISBOR	PLAISIO COMPUTERS SA (CR)	---	---	---	---	---	---	---	---
PPCBOR	PPC (CR)	2,000	---	---	---	---	---	---	2,500,352
QUALBOR	QUALITY & RELIABILITY SA (CR)	---	---	---	---	---	---	---	---

Stock Lending Notes

- [1] - Multilateral contracts Lending or Borrowing as per Methods 8-1, 8-2 and 8-3-3 (According to ATHEX BoD Resolution No.17)
- [2] - Bilateral Contracts Lending or Borrowing as per Methods 8-3-1 and 8-3-2 (According to ATHEX BoD Resolution No.20)
- [3] - The information concerning OTC Stock Borrowing Transactions is based on the statements of the Dematerialised Securities System (DSS) operators involved and refers to volumes that have been registered up until the previous working day.
- [4] - Average Price (Volume weighted)
- [5] - The Data concerning Open Interest before the start of trading session

Lending Products	Underlying Title	Multilateral Transactions[1]					Bilateral Transactions[2]		Stock Borrowing through OTC (volume)[3]
		Open Interest[5]	Volume(Offered)	Average Weighted	Transactions volume	Average Weighted	Transactions Volume	Average Weighted	Transactions Volume
QUESTBOR	QUEST HOLDINGS (CR)	---	---	---	---	---	---	---	101,171
TENERGYBOR	TERNA ENERGY (CR)	---	---	---	---	---	---	---	126,153
TITCBOR	TITAN CEMENT (CB)	15,185	---	---	---	---	---	---	222,217
VIOBOR	VIOHALCO SA/NV (CB)	16,467	---	---	---	---	---	---	---

Stock Lending Notes

[1] - Multilateral contracts Lending or Borrowing as per Methods 8-1, 8-2 and 8-3-3 (According to ATHEX BoD Resolution No.17)

[2] - Bilateral Contracts Lending or Borrowing as per Methods 8-3-1 and 8-3-2 (According to ATHEX BoD Resolution No.20)

[3] - The information concerning OTC Stock Borrowing Transactions is based on the statements of the Dematerialised Securities System (DSS) operators involved and refers to volumes that have been registered up until the previous working day.

[4] - Average Price (Volume weighted)

[5] - The Data concerning Open Interest before the start of trading session

Sectors codification for listed companies

12003 -	ETF	10101010	Computer Services
10101015	Software	10102030	Computer Hardware
15101010	Telecommunications Equipment	15102015	Telecommunications Services
20101010	Health Care Facilities	20101025	Health Care Services
20102010	Medical Equipment	20103015	Pharmaceuticals
30101010	Banks	30202000	Diversified Financial Services
30202010	Asset Managers & Custodians	30202015	Investment Services
30204000	Closed End Investments	30302010	Full Line Insurance
30302015	Insurance Brokers	30302025	Property and Casualty Insurance
35101010	Real Estate Holding and Development	35101015	Real Estate Services
35102000	Diversified REITs	35102030	Office REITs
40201040	Rental & Leasing Services: Consumer	40202010	Home Construction
40202015	Household Furnishings	40202020	Household Appliance
40203040	Electronic Entertainment	40203045	Toys
40204020	Clothing & Accessories	40301010	Entertainment
40301030	Publishing	40301035	Radio & TV Broadcasters
40401010	Diversified Retailers	40401020	Apparel Retailers
40401025	Home Improvement Retailers	40401030	Specialty Retailers
40501010	Airlines	40501015	Travel & Tourism
40501020	Casinos & Gambling	40501025	Hotels & Motels
45101015	Distillers & Vintners	45101020	Soft Drinks
45102010	Farming Fishing Ranching & Plantations	45102020	Food Products
45103010	Tobacco	45201010	Food Retailers & Wholesalers
45201020	Personal Products	50101010	Construction
50101020	Building Roof/Wallboard and Plumbing	50101030	Cement
50101035	Building Materials: Other	50202010	Electrical Components
50203000	Diversified Industrials	50203015	Plastics
50203030	Containers & Packaging	50204000	Machinery: Industrial
50204020	Machinery: Construction & Handling	50205010	Industrial Suppliers
50205020	Back Office Support HR & Consulting	50205030	Forms & Bulk Printing Services
50206015	Commercial Vehicles & Parts	50206030	Marine Transportation
50206060	Transportation Services	55101000	Diversified Materials
55101020	Textile Products	55102000	General Mining
55102010	Iron & Steel	55102015	Metal Fabricating
55102035	Aluminum	60101020	Oil Refining and Marketing
65101010	Alternative Electricity	65101015	Conventional Electricity
65102030	Water		



ATHEX
Athens Stock Exchange

Λεωφ. Αθηνών 110 104 42 Αθήνα
110, Athinon Ave. GR 104 42 Athens
tel. (+30)210-33.66.800, fax (+30)210-33.66.101
www.athexgroup.gr